



## Degree and Credit Hour Trends Report Worksheet

Requestor: Curriculum Review Committee	Curriculum to be Reviewed: Health Care Administration	Due: 2/18/05
Coordinator: Carolyn Nancy		

Report to consist of the following:				
<b>Degree Prefixes:</b>	HEA	HCA, AAS		
<b>Course Codes:</b>	HCA			

Bookmarks:		
<b>Intro Section:</b>	<u>Program Title</u> Report for CRC	100%
	<u>Program Prefix</u> Table of Contents	100%
<b>Degree Trends Section:</b>	<u>Program Title</u> Degree Trends Report	100%
	<u>Program Prefix</u> Degree Trends Summary	100%
	<u>Program Prefix</u> Ten-Year Trend	100%
	<u>Program Prefix</u> Rate of Change	100%
	<u>Program Prefix</u> Three-Year Moving Mean	100%
	College-Wide Ten-Year Trend	100%
<b>Credit Hour Trends Section:</b>	<u>Course Title</u> Credit Hour Trends Report	100%
:	<u>Course Code</u> Credit Hour Trends Summary	100%
	<u>Course Code</u> Ten-Year Trend	100%
	<u>Course Code</u> Three-Year Moving Mean	158%
	<u>Course Code</u> Rate of Change	158%
	College-Wide Ten-Year Trend	100%

# Institutional Research Report

**Health Care Administration  
Degree and Credit Hour Trends Reports  
for  
Curriculum Review Committee**



**OAKLAND  
COMMUNITY  
COLLEGE**

## TABLE OF CONTENTS

### **Health Care Administration Degree Trends Report**

HEA/HCA Degree Trends Summary

HEA/HCA Ten-Year Trend

HEA/HCA Rate of Change

HEA/HCA Three-Year Moving Mean

College-Wide Ten-Year Trend

### **Health Care Administration Credit Hour Trends Report**

HCA Credit Hour Trends Summary

HCA Ten-Year Trend

HCA Three-Year Moving Mean

HCA Rate of Change

College-Wide Ten-Year Trend



OAKLAND  
COMMUNITY  
COLLEGE

**Degree Trends Report**  
**Health Care Administration**  
**HEA**  
**2003-04**

**Prepared by:**  
**Oakland Community College**  
**Office of Institutional Research**  
**February 8, 2005**

**Oakland Community College  
Degree Trends Report  
Health Care Administration (HEA)  
1994-95 through 2003-04**

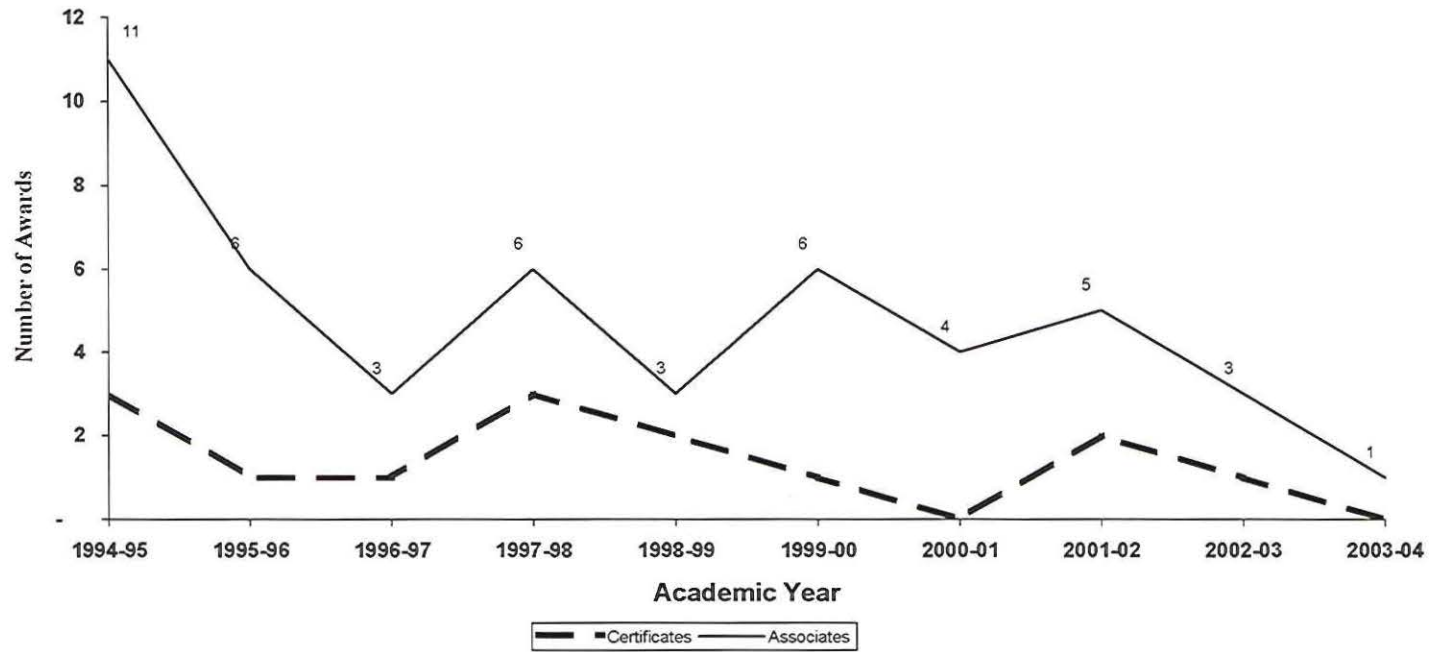
The Degree Trends Report is developed by the Office of Institutional Research based on data compiled from official college records which are submitted to the State of Michigan for the IPEDS (Integrated Post-Secondary Education System) Annual Degrees Conferred Report. The Degree Trends Report examines trends of OCC degrees, based on specific programs. The standard format offers information about certificates and associate degrees awarded. In the event that a given program offers only a certificate or an associate degree, information describing the other type of award will not be shown.

Trends over a specified period of time are illustrated by the following graphs for Health Care Administration (HEA)

- Ten-year trend showing the annual awards conferred in Health Care Administration
- Rate of change in annual awards conferred in Health Care Administration
- The three-year Moving Mean for annual awards conferred in Health Care Administration
- Ten-year trend in awards conferred collegewide.

Questions regarding this report can be forwarded to the Office of Institutional Research at (248) 341-2123.

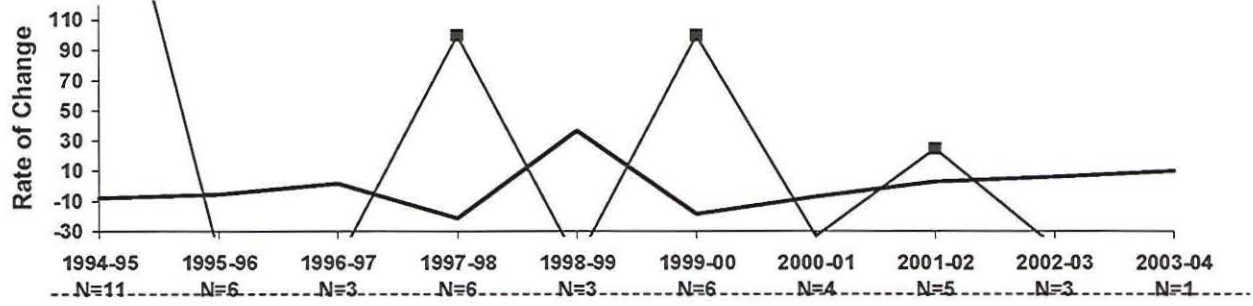
**Oakland Community College  
Associate Degrees and Certificates Awarded  
Health Care Administration  
1994-95 through 2003-04**



<u>Academic Yr.</u>	<u>Certificates</u>	<u>Associates</u>
1994-95	3	11
1995-96	1	6
1996-97	1	3
1997-98	3	6
1998-99	2	3
1999-00	1	6
2000-01	0	4
2001-02	2	5
2002-03	1	3
2003-04	0	1

**Oakland Community College  
Rate of Change in Annual Awards  
College-Wide  
1994-95 through 2003-04**

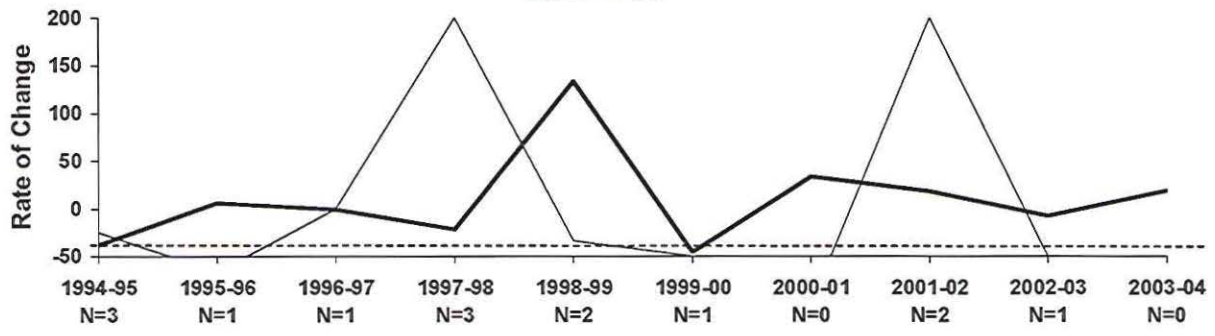
**Associate Degrees**



Academic Year, N = Number of Program Degrees

— Collegewide    —■— Program Rate of Change

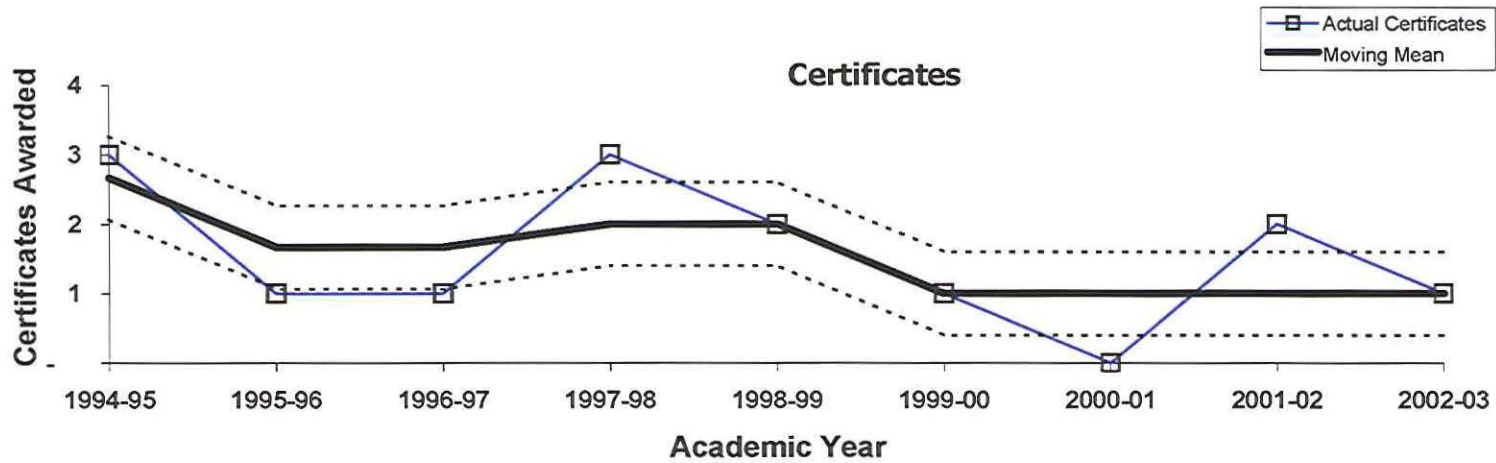
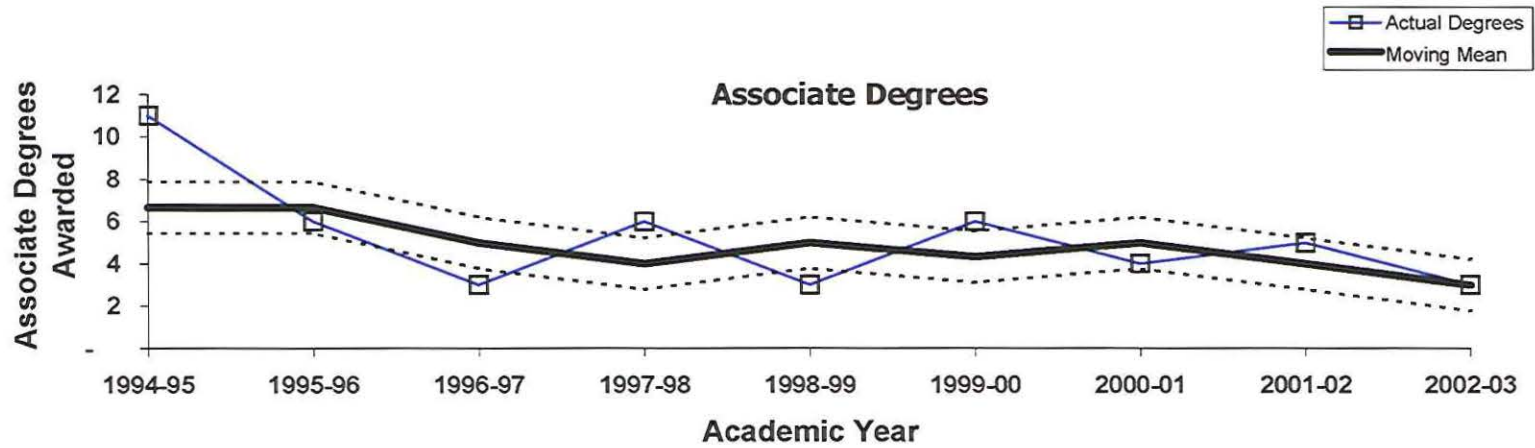
**Certificates**



Academic Year, N = Number of Program Certificates

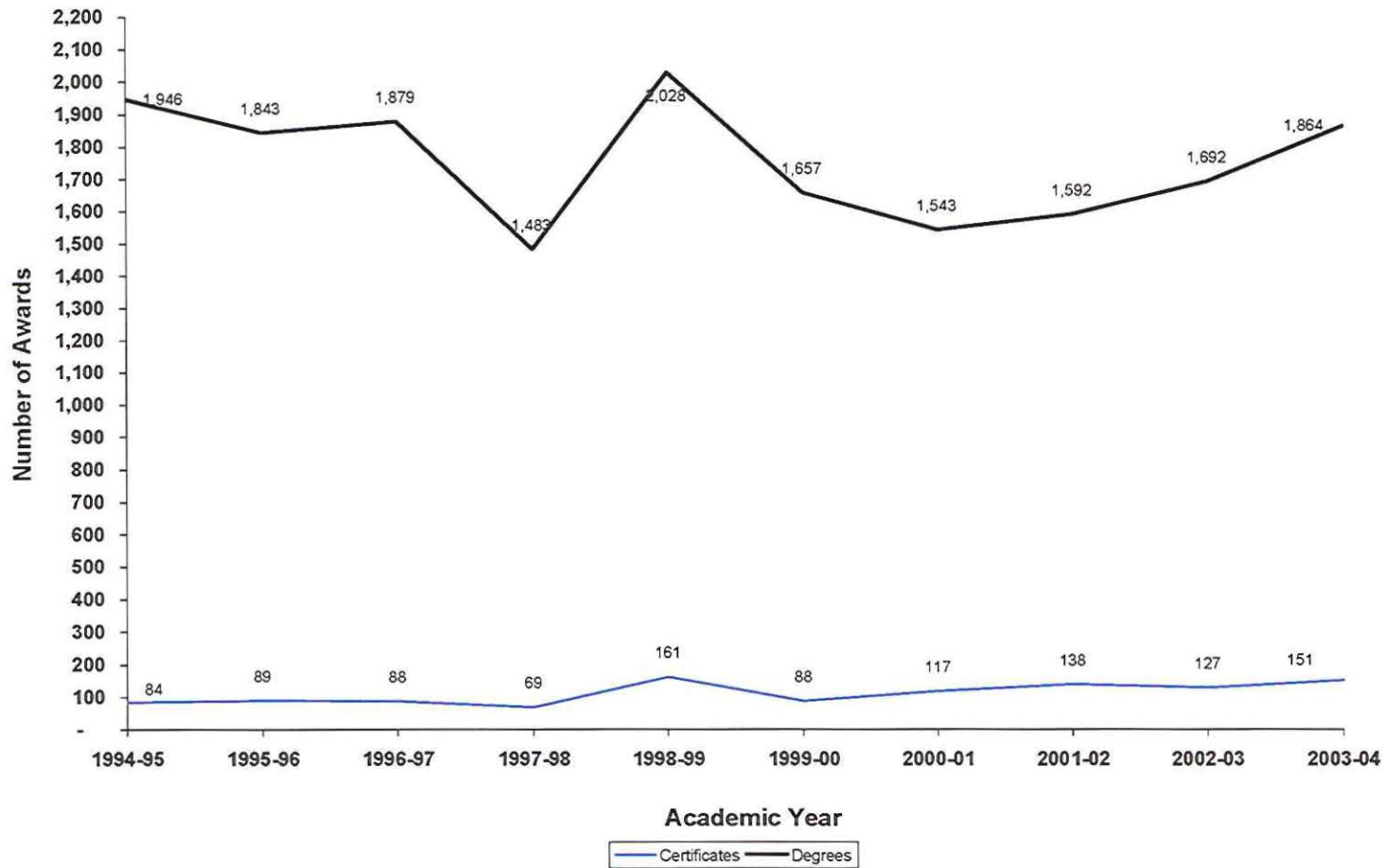
— College-wide    —■— Program Rate of Change

**Oakland Community College  
Three Year Moving Mean in Annual Awards  
Health Care Administration  
1994-95 through 2002-03**





**Oakland Community College  
Associate Degrees and Certificates Awarded  
College-Wide  
1994-95 through 2003-04**





OAKLAND  
COMMUNITY  
COLLEGE

**Credit Hour Trends Report  
Health Care Admin.  
HCA  
2003-04**

**Prepared by:  
Oakland Community College  
Office of Institutional Research  
February 8, 2005**

**Oakland Community College  
Credit Hour Trends Report  
Health Care Admin.  
1994-95 through 2003-04**

Each year the Office of Institutional Research prepares the Credit Hour Trends Report, based on data submitted to the State of Michigan in the annual ACS-6 (Activities Classification Structure) process. This report is based on each course section's official count date (1/10th Day). The Credit Hour Trends Report examines annual (July 1 - June 30) enrollment trends of OCC disciplines, based on course prefix codes.

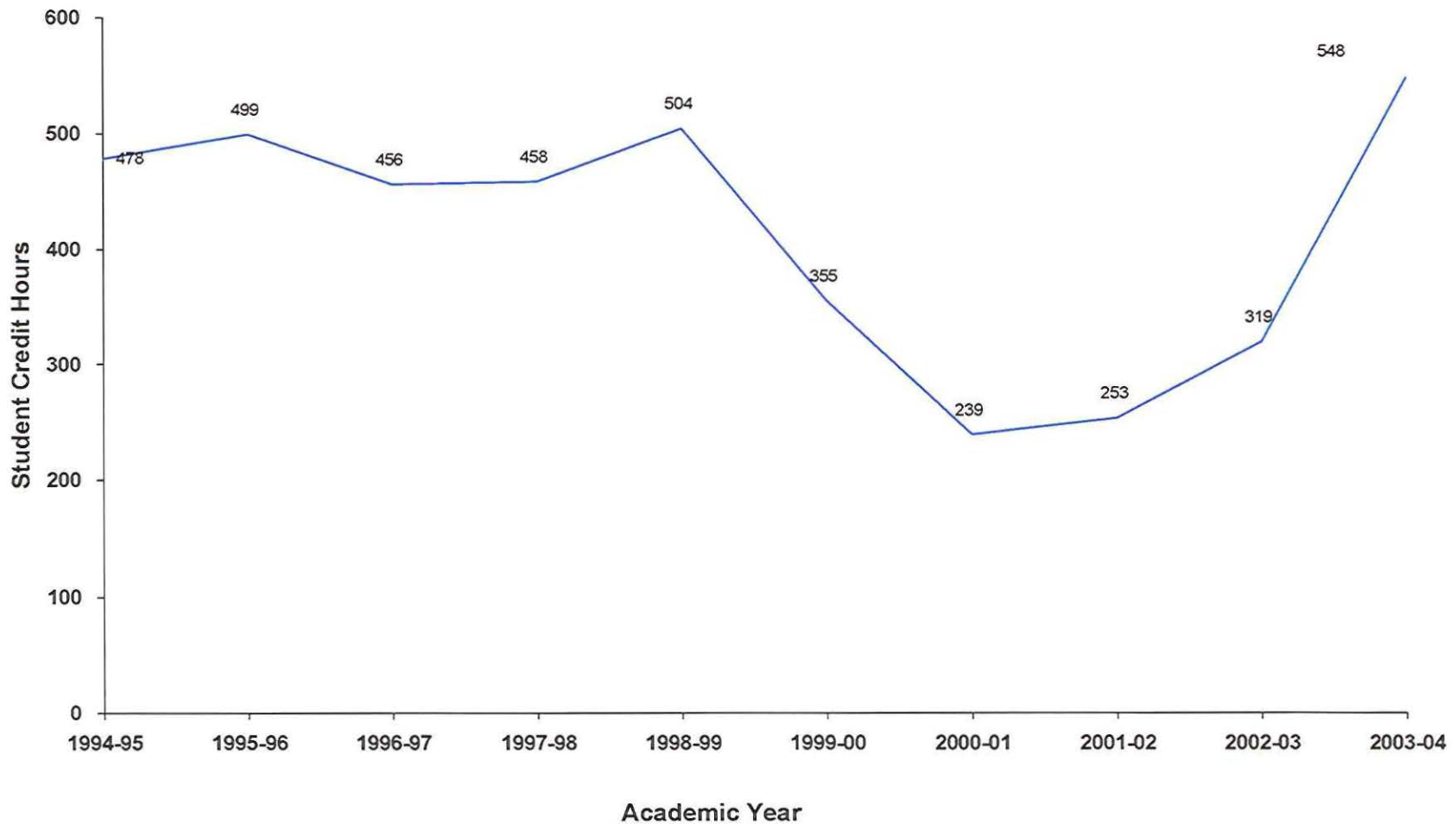
Trends over a specified period of time are illustrated by the following graphs for Health Care Admin..

- Graph depicting ten-year trend in student credit hours generated by Health Care Admin.
- Graphs depicting three-year moving mean and rate of change in student credit hours for Health Care Admin..
- Ten-year trend in annual credit hours generated Collegewide.

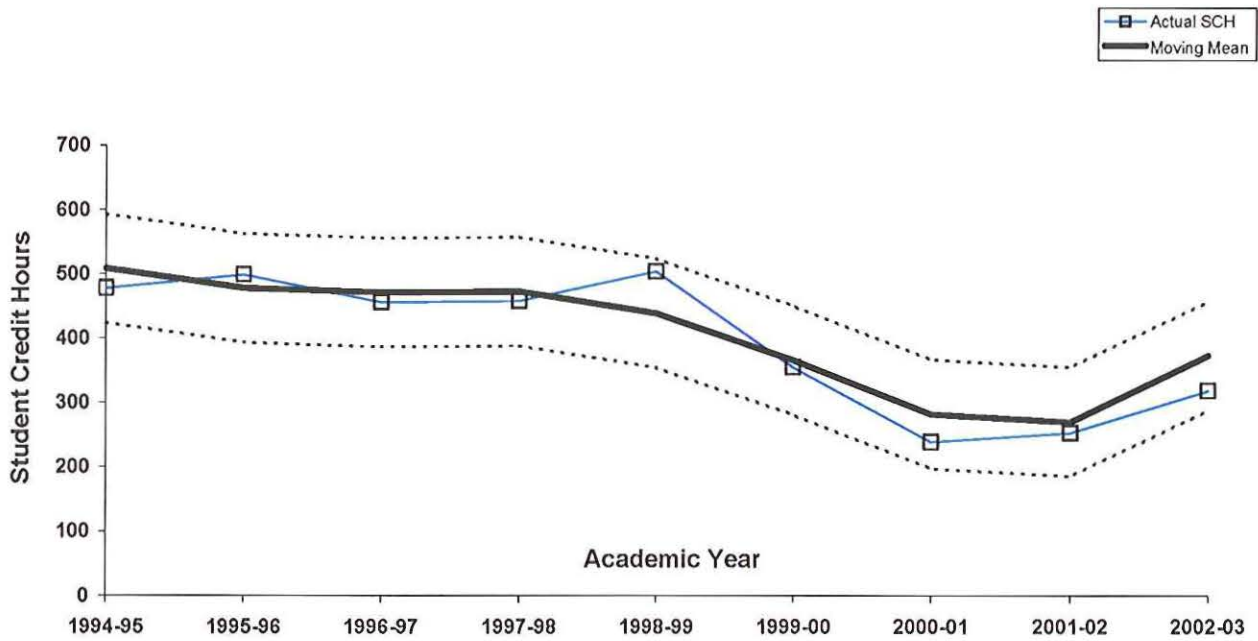
Questions regarding this report can be forwarded to the Office of Institutional Research at (248) 341-2123.

**Oakland Community College  
Ten-Year Trend in Student Credit Hours  
Health Care Admin.  
1994-95 through 2003-04**

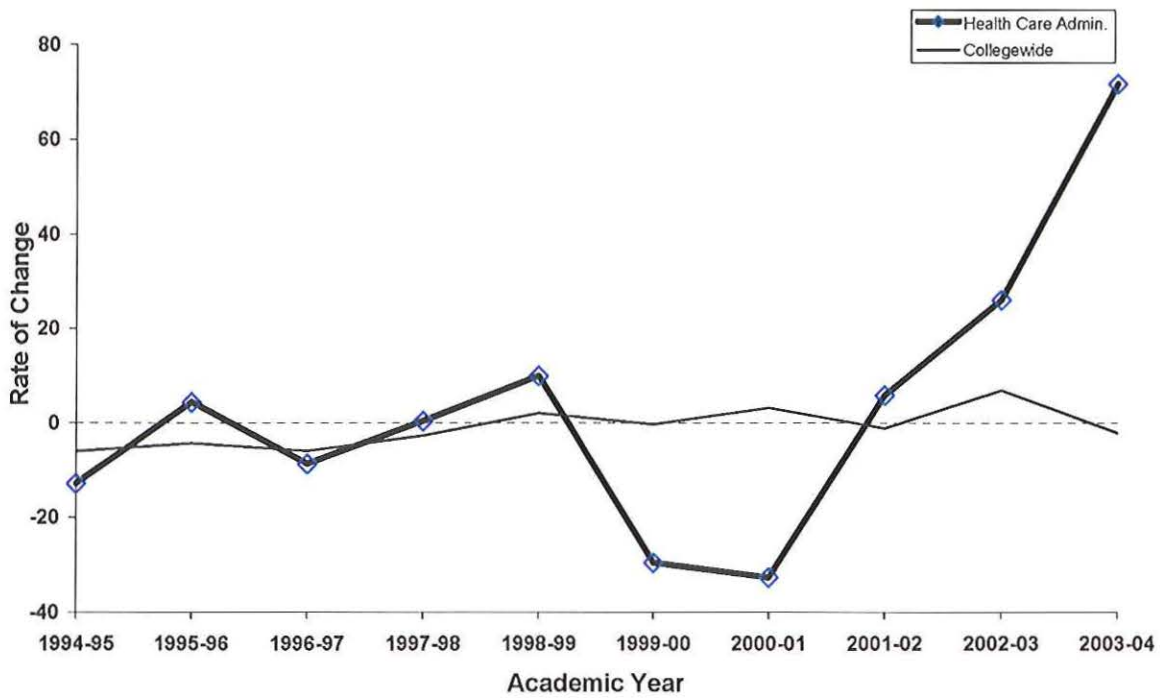
	1994-95 SCH	1995-96 SCH	1996-97 SCH	1997-98 SCH	1998-99 SCH	1999-00 SCH	2000-01 SCH	2001-02 SCH	2002-03 SCH	2003-04 SCH	5-Year % Change	10-Year % Change
Health Care Admin.	478	499	456	458	504	355	239	253	319	548	54.4	14.6
College Wide Totals	471,593	451,159	443,471	431,521	440,448	438,997	453,054	447,928	478,827	468,777	6.8	-0.6



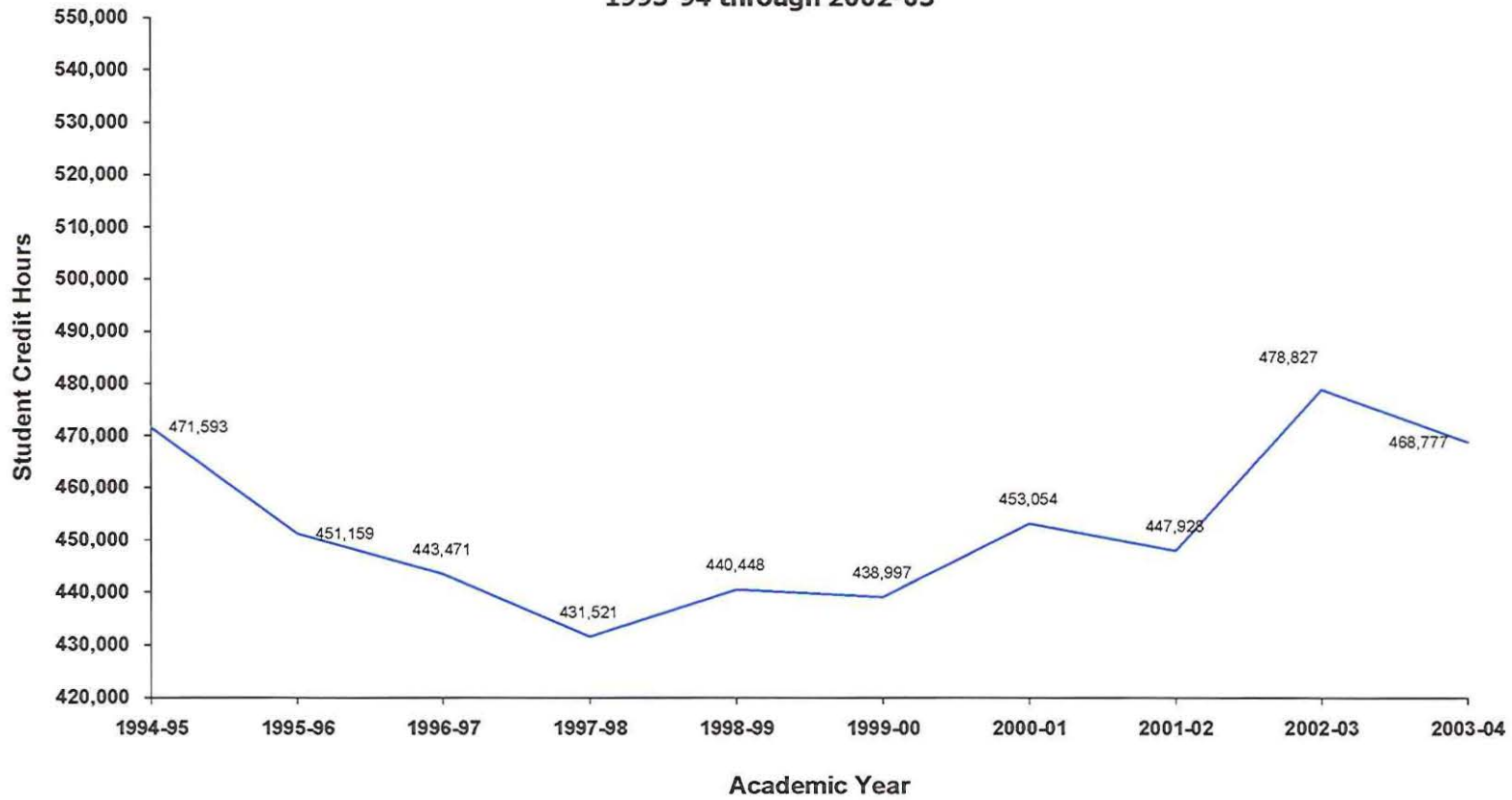
Oakland Community College  
 Three-Year Moving Mean  
 Health Care Admin.  
 1994-95 through 2002-03



Rate of Change in Student Credit Hours 1994-95 through 2003-04



**Oakland Community College  
Ten-Year Trend in Student Credit Hours  
College-Wide  
1993-94 through 2002-03**



1994-95	1995-96	1996-97	1997-98	1998-99	1999-00	2000-01	2001-02	2002-03	2003-04
471,593	451,159	443,471	431,521	440,448	438,997	453,054	447,928	478,827	468,777