



OAKLAND  
COMMUNITY  
COLLEGE

**CREDIT HOUR TRENDS REPORT  
(1988-89 THROUGH 1997-98)**

*Prepared by:*

*The Office of Institutional Research  
Oakland Community College  
March 1999*

# **Oakland Community College Credit Hour Trends Report (1988-89 through 1997-98) Major Findings**

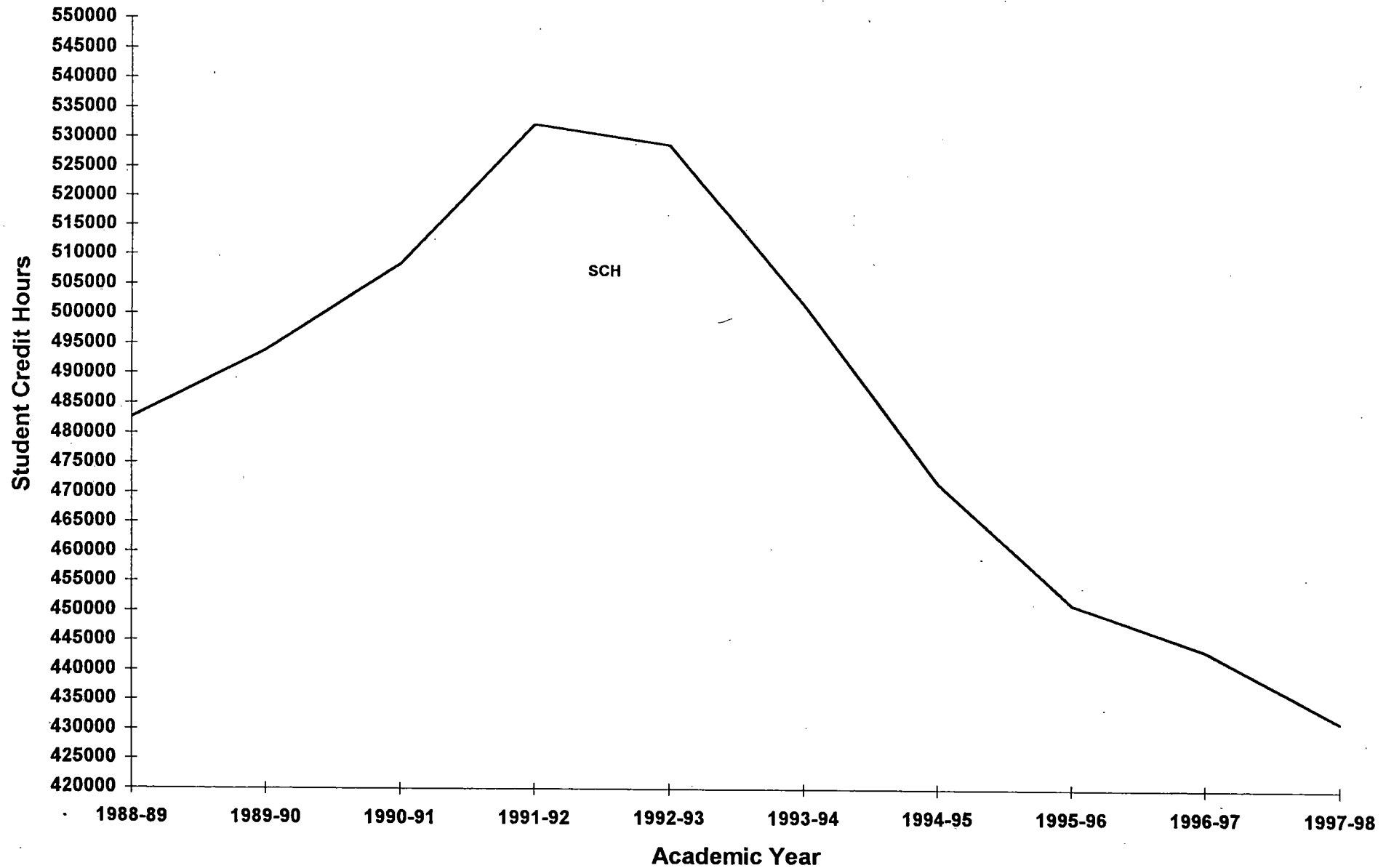
Each year the Office of Institutional Research prepares the Credit Hour Trends report, based on data submitted to the Michigan Department of Education in the ACS-6 report (Activities Classification Structure). The Credit Hour Trends report examines enrollment trends of OCC disciplines, based on course prefix codes and "curriculum clusters."

This report depicts the five and ten year trends in annual credit hours generated, trends in the changing rate of enrollment college-wide and by curriculum cluster, and the top credit hour generating disciplines.

Highlights from this year's report include:

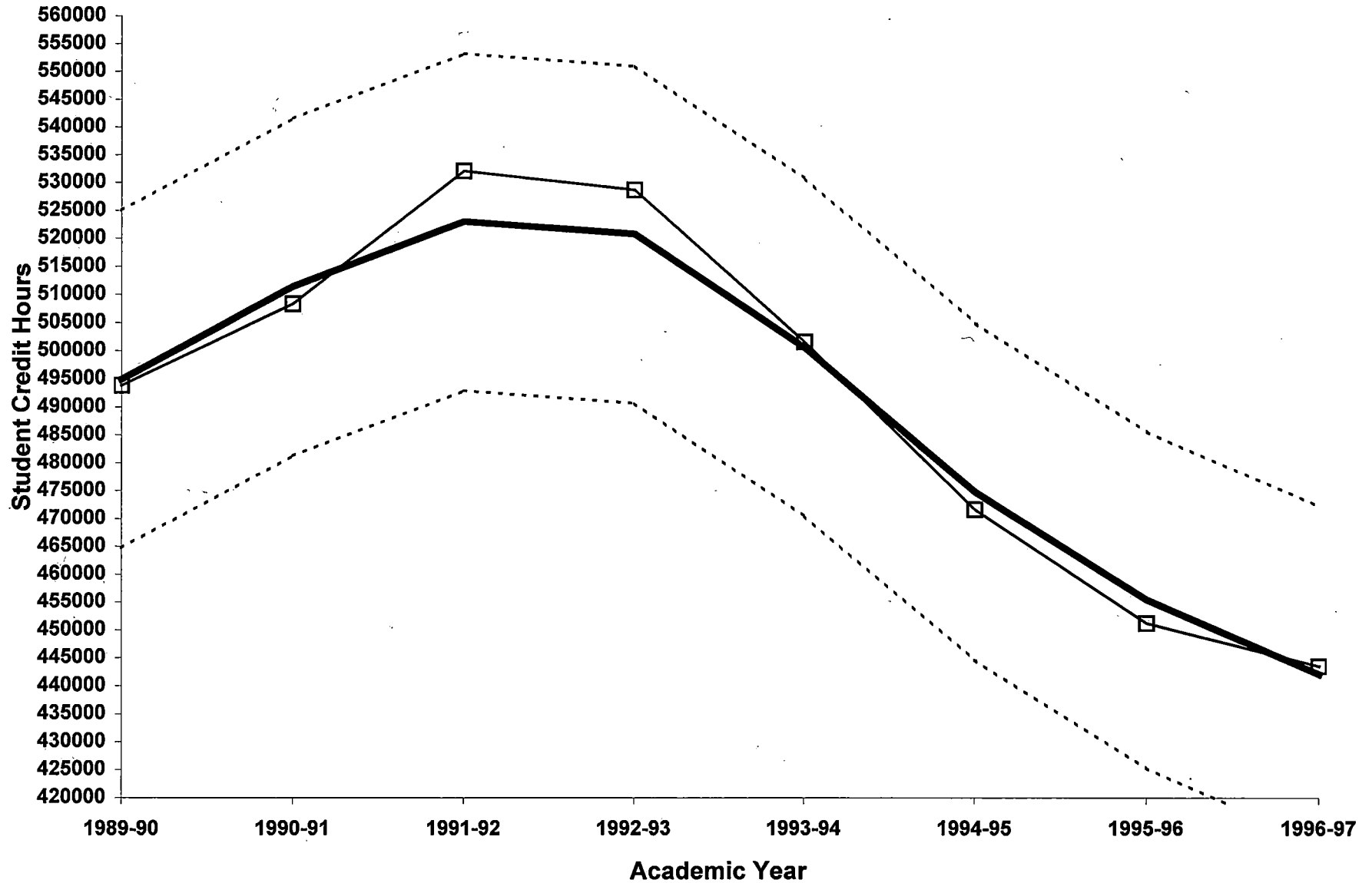
- ◆ Total student credit hour levels have decreased for the sixth consecutive year. In the 1991-92 academic year, the number of student credit hours (SCH) peaked with 532,100 (SCH) generated college-wide. By AY 1997-98 total SCH had decreased by nearly 19% from this high, for a total of 431,521 total SCH.
- ◆ While the total number of student credit hours continues to decline, the rate of decline has lessened since the 1994-95 academic year. For example in AY 1994-95 the total number of student credit hours had declined nearly 6% from the previous year, whereas in AY 1995-96 the total SCH declined approximately 4% from the previous year. Rates of decline were 1.7% and 2.7% for AY 1996-97 and 1997-98, respectively.
- ◆ In 1997-98, ten disciplines out of 111 generated more than 10,000 student credit hours. The "Top Five" SCH-generating disciplines are Mathematics (MAT), English (ENG), Computer Information Systems (CIS), Psychology (PSY), and Biology (BIO).
- ◆ 55 disciplines out of 111 generated less than 1,000 SCH in 1997-98.
- ◆ In the past five years, 28 disciplines increased the number of SCH generated. In the past ten years, 38 disciplines increased the number of SCH generated.
- ◆ In order to provide a broader understanding of enrollment trends in various disciplines, course prefix codes are grouped into eight curriculum clusters. The three largest curriculum clusters are Math & Sciences (generating 24% of the college's total SCH), Humanities & Language (generating 21% of the college's total SCH), and Social Sciences (generating 17% of the college's total SCH).

Oakland Community College  
Ten Year Trend in Student Credit Hours  
College-wide Totals  
(1988-89 through 1997-98)

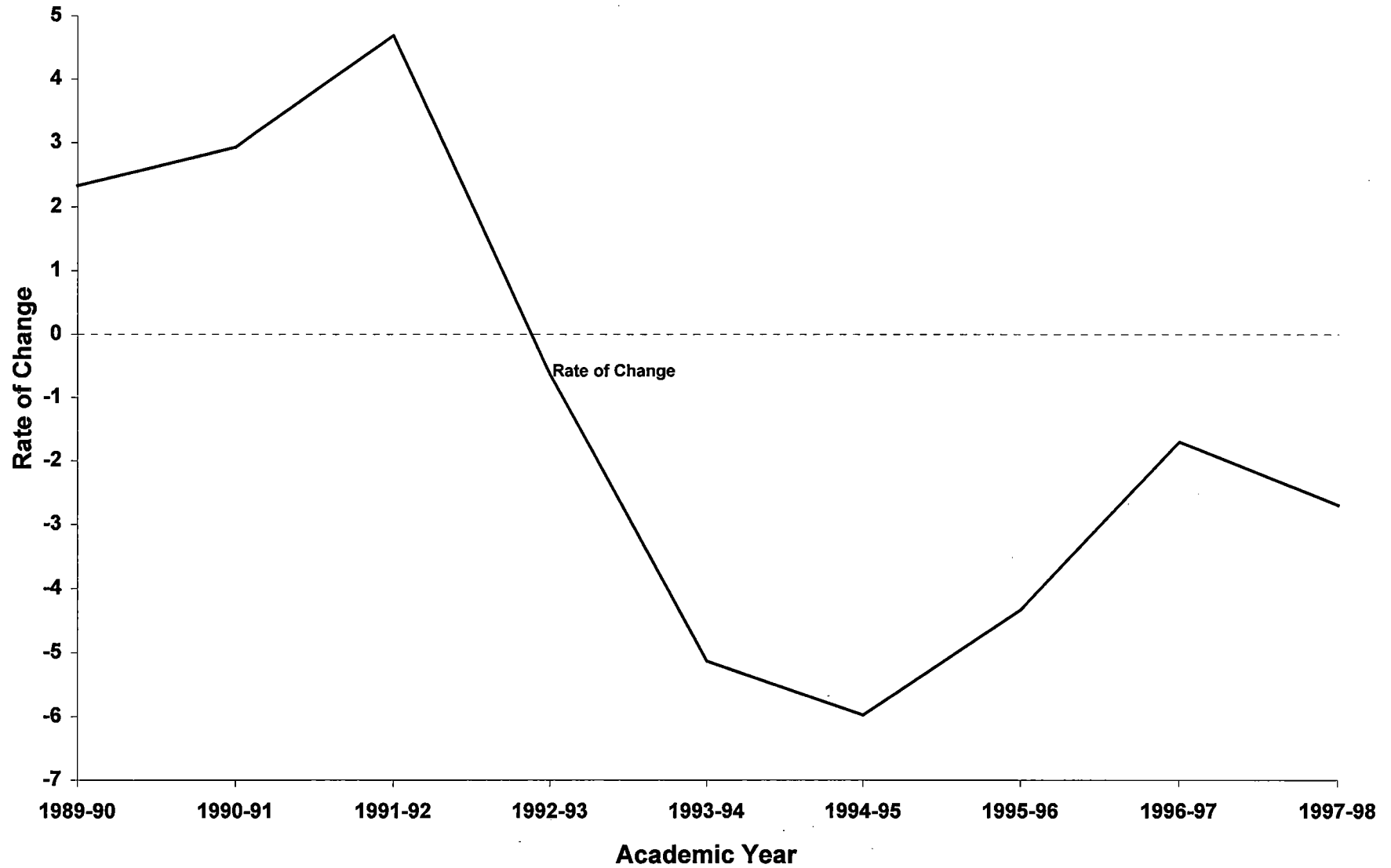


Oakland Community College  
3 Year Moving Mean  
Collegewide  
(1989-90 through 1996-97)

Actual SCH  
Moving Mean



**Oakland Community College  
Rate of Change in Student Credit Hours  
College-wide Totals  
(1989-90 through 1997-98)**



**Oakland Community College**  
**Student Credit Hours**  
**Sorted by Total Student Credit Hours**  
**(1997-98)**

Course Prefix	Description	1997-98 SCH	5- Year % Change	10 Year % Change
MAT	Mathematics	63,930	-12	-4
ENG	English	48,022	-25	-16
CIS	Computer Information Systems	34,198	21	54
PSY	Psychology	20,853	-21	-22
BIO	Biology	18,113	-31	4
BUS	Business Administration	16,394	-16	-35
POL	Political Science	14,652	-20	-24
ACC	Accounting	13,701	-20	-40
HIS	History	11,901	0	-6
ART	Art	10,593	-10	-3
ECO	Economics	9,732	-19	-32
ESL	English as a Second Language	9,165	2,010	3,174
HUM	Humanities	8,904	-20	-24
SOC	Sociology	8,790	-22	-26
CHE	Chemistry	8,330	-32	3
PER	Physical Education	7,868	-30	-12
NUR	Nursing	7,336	14	31
CAD	Computer Aided Design	7,315	14	102
SPA	Spanish	6,456	34	102
PHI	Philosophy	5,904	12	37
SPE	Speech	5,393	-22	6
PLS	Law Enforcement	5,063	-13	4
BIS	Business Information Systems	4,730	-22	-49
PHO	Photography	4,620	23	
PHY	Physics	3,794	-13	48
GSC	General Science	3,352	-12	15
FST	Food Service	2,704	-32	-41
DDT	Drafting and Design Technology	2,580	-8	-13
CSC	Community Service Course	2,450	-57	-76
MUS	Music	2,386	8	-17
HEA	Health	2,337	-39	10
PAS	Police Academy Science	2,299	38	2
ECD	Early Childhood Development	2,190	36	116
SSC	Social Science	2,142	-41	-64
LSC	Life Science	1,976	-21	-31
MHA	Mental Health	1,914	-12	-19
MKT	Marketing	1,815	-11	-46
FRE	French	1,792	-12	-15
FTI	Fire Technical Institute	1,758	-55	6
EMT	Emergency Medical Technology	1,710	15	149
CER	Ceramics	1,655	12	-11
BPI	Theatre	1,634	-51	-
ANT	Anthropology	1,629	-18	30
THE	Theatre	1,487	10	10
MED	Medical Technology	1,461	-47	-22
LGL	Legal Assisting	1,375	-15	50
LST	Landscape Technology	1,321	-8	-34
MTS	Manufacturing Technolical Service	1,301	-	-
EEC	Electrical/Electronics Technology	1,299	-21	-

**Oakland Community College**  
**Student Credit Hours**  
**Sorted by Total Student Credit Hours**  
**(1997-98)**

Course Prefix	Description	SCH	Change	Change
IIC	Individualized Instruction Center	1,220	-27	202
ATA	Automobile Servicing	1,220	-33	-37
FSH	Foundations of Humanities	1,144	-43	-65
DHY	Dental Hygiene	1,124	4	-2
GER	German	1,092	-16	21
ROB	Robotics/Automated Systems Technology	1,076	-1	-17
CNS	Counseling	1,046	-16	-34
MDA	Medical Assisting	981	-5	69
EXL	Exercise Science & Technology	925	-17	53
EGR	Pre-Engineering	925	3	48
GCA	Graphics/Commercial Art	883	-36	-64
TER	Climate Control	828	-47	-53
ARC	Architecture	817	-12	-12
RAD	Radiologic Technology	792	26	--
DMS	Diagnostic Medical Sonography	766	-8	-20
RSP	Respiratory Therapy	731	-10	7
JPN	Japanese	696	-26	--
ECT	Computer Hardware Engineering Technology	688	-32	12
GEO	Geography	657	33	61
ISC	Instructional Sport Camps	623	5	81
CEC	Continuing Education	623	-2	--
ATW	Welding and Fabricating Technology	597	59	51
VBT	Vehicle Body	562	-48	-54
SLS	Sign Language Studies	558	-23	-27
MEC	Mechanical Technology	549	-14	10
FFT	Fire Fighter Technology	528	-30	--
APM	Apprentice Pattern Maker	480	58	10
HCA	Health Care Administration	458	-16	-14
ATM	Machine Tool Technology	431	-62	-59
ADT	Automobile Drawing	378	138	563
FSN	Foundational Studies of Natural Science	376	-27	-48
ATF	Fluid Power Technology	348	6	-3
HPT	Hospital Pharmacy Technology	342	-42	1
FLT	Aviation Flight Technology	313	-63	-65
DSB	Police Academy	300	-1	35
CIM	Computer Integrated Manufacturing	292	-4	-28
LIB	Library Technical Services	291	-1	165
ETT	Electrical Trades Technology	290	100	-85
BTC	Business Technology Center	288	--	--
ITA	Italian	288	--	--
ELT	Electronics Technology	279	-30	-68
EDU	Education	270	3	53
FSS	Foundations of Behavioral and Social Science	260	-55	-71
APP	Pre-Apprentice	256	8	-9
GRN	Gerontology	231	-68	-55
PSC	Physical Science	216	23	145
APD	Apprentice Drafting	156	-40	-82
APT	Apprentice Tinsmith	153	-31	-53
TED	Pre-Apprentice Drafting	138	-44	-73
IND	Industrial Sciences	93	-82	-74

**Oakland Community College  
Student Credit Hours  
Sorted by Total Student Credit Hours  
(1997-98)**

Course Prefix	Description	SCH	Change	Change
WOD	Woodworking	90	-9	-47
KEH	Kindergarten, Elementary, High School Ed	88	1,668	-95
DEN	Dental Assisting	84	4	-10
QAT	Quality Assurance Technology	81	-69	-78
ARB	Arabic	72	--	--
AET	Alternate Energies	68	-35	-69
RET	Retailing	60	-91	-87
DRT	Drafting	42	--	--
EPT	Engineering Physical Test	15	--	--
MDB	Management Development Busin	10	--	--
COM	Communications	6	-99	-100
JOR	Journalism	3	-98	-99



**Oakland Community College**  
**Student Credit Hours**  
**Sorted by Five Year Percent Change**  
**(1993-94 through 1997-98)**

<b>Course Prefix</b>	<b>Description</b>	<b>1997-98 SCH</b>	<b>5- Year % Change</b>	<b>10 Year % Change</b>
ESL	English as a Second Language	9,165	2,010	3,174
KEH	Kindergarten, Elementary, High School Ed.	88	1,668	-95
ADT	Automobile Drawing	378	138	563
ETT	Electrical Trades Technology	290	100	-85
ATW	Welding and Fabricating Technology	597	59	51
APM	Apprentice Pattern Maker	480	58	10
PAS	Police Academy Science	2,299	38	2
ECD	Early Childhood Development	2,190	36	116
SPA	Spanish	6,456	34	102
GEO	Geography	657	33	61
RAD	Radiologic Technology	792	26	-
PSC	Physical Science	216	23	145
PHO	Photography	4,620	23	-
CIS	Computer Information Systems	34,198	21	54
EMT	Emergency Medical Technology	1,710	15	149
CAD	Computer Aided Design	7,315	14	102
NUR	Nursing	7,336	14	31
CER	Ceramics	1,655	12	-11
PHI	Philosophy	5,904	12	37
THE	Theatre	1,487	10	10
APP	Pre-Apprentice	256	8	-9
MUS	Music	2,386	8	-17
ATF	Fluid Power Technology	348	6	-3
ISC	Instructional Sport Camps	623	5	81
DHY	Dental Hygiene	1,124	4	-2
DEN	Dental Assisting	84	4	-10
EDU	Education	270	3	53
EGR	Pre-Engineering	925	3	48
HIS	History	11,901	0	-6
LIB	Library Technical Services	291	-1	165
ROB	Robotics Technology	1,076	-1	-17
DSB	Police Academy	300	-1	35
CEC	Continuing Education	623	-2	-
CIM	Computer Integrated Manufacturing	292	-4	-28
MDA	Medical Assisting	981	-5	69
LST	Landscape Technology	1,321	-8	-34
DMS	Diagnostic Medical Sonography	766	-8	-20
DDT	Drafting Design Technology	2,580	-8	-13
WOD	Woodworking	90	-9	-47
ART	Art	10,593	-10	-3
RSP	Respiratory Therapy	731	-10	7
MKT	Marketing	1,815	-11	-46
MAT	Mathematics	63,930	-12	-4
ARC	Architecture	817	-12	-12
GSC	General Science	3,352	-12	15
FRE	French	1,792	-12	-15
MHA	Mental Health	1,914	-12	-19

**Oakland Community College**  
**Student Credit Hours**  
**Sorted by Five Year Percent Change**  
**(1993-94 through 1997-98)**

Course Prefix	Description	SCH	Change	Change
PHY	Physics	3,794	-13	48
PLS	Law Enforcement	5,063	-13	4
MEC	Mechanical Technology	549	-14	10
LGL	Legal Assisting	1,375	-15	50
BUS	Business Administration	16,394	-16	-35
GER	German	1,092	-16	21
HCA	Health Care Administration	458	-16	-14
CNS	Counseling	1,046	-16	-34
EXL	Exercise Science & Technology	925	-17	53
ANT	Anthropology	1,629	-18	30
ECO	Economics	9,732	-19	-32
HUM	Humanities	8,904	-20	-24
ACC	Accounting	13,701	-20	-40
POL	Political Science	14,652	-20	-24
LSC	Life Science	1,976	-21	-31
PSY	Psychology	20,853	-21	-22
EEC	Electrical/Electronics Technology	1,299	-21	--
SOC	Sociology	8,790	-22	-26
BIS	Business Information Systems	4,730	-22	-49
SPE	Speech	5,393	-22	6
SLS	Sign Language Studies	558	-23	-27
ENG	English	48,022	-25	-16
JPN	Japanese	696	-26	--
FSN	Foundations of Natural Science	376	-27	-48
IIC	Individualized Instruction Center	1,220	-27	202
ELT	Electronics Technology	279	-30	-68
FFT	Fire Fighter Technology	528	-30	--
PER	Physical Education	7,868	-30	-12
BIO	Biology	18,113	-31	4
APT	Apprentice Tinsmith	153	-31	-53
CHE	Chemistry	8,330	-32	3
FST	Food Service	2,704	-32	-41
ECT	Computer Hardware Engineering Technology	688	-32	12
ATA	Automobile Servicing	1,220	-33	-37
AET	Alternate Energies	68	-35	-69
GCA	Graphics/Commercial Art	883	-36	-64
HEA	Health	2,337	-39	10
APD	Apprentice Drafting	156	-40	-82
SSC	Social Science	2,142	-41	-64
HPT	Hospital Pharmacy Technology	342	-42	1
FSH	Found Stud./Humanities	1,144	-43	-65
TED	Pre-Apprentice Drafting	138	-44	-73
MED	Medical Technology	1,461	-47	-22
TER	Climate Control Technology	828	-47	-53
VBT	Vehicle Body	562	-48	-54
BPI	Business Professional Institute	1,634	-51	--
FSS	Foundations of Behavioral and Social Science	260	-55	-71
FTI	Fire Technical Institute	1,758	-55	6
CSC	Community Service Course	2,450	-57	-76

**Oakland Community College  
Student Credit Hours  
Sorted by Five Year Percent Change  
(1993-94 through 1997-98)**

<b>Course Prefix</b>	<b>Description</b>	<b>SCH</b>	<b>Change</b>	<b>Change</b>
ATM	Machine Tool Technology	431	-62	-59
FLT	Aviation Flight Technology	313	-63	-65
GRN	Gerontology	231	-68	-55
QAT	Quality Assurance Technology	81	-69	-78
IND	Industrial Sciences	93	-82	-74
RET	Retailing	60	-91	-87
JOR	Journalism	3	-98	-99
COM	Communications	6	-99	-100

**Oakland Community College**  
**Student Credit Hours**  
**Sorted by Ten Year Percent Change**  
**(1988-89 through 1997-98)**

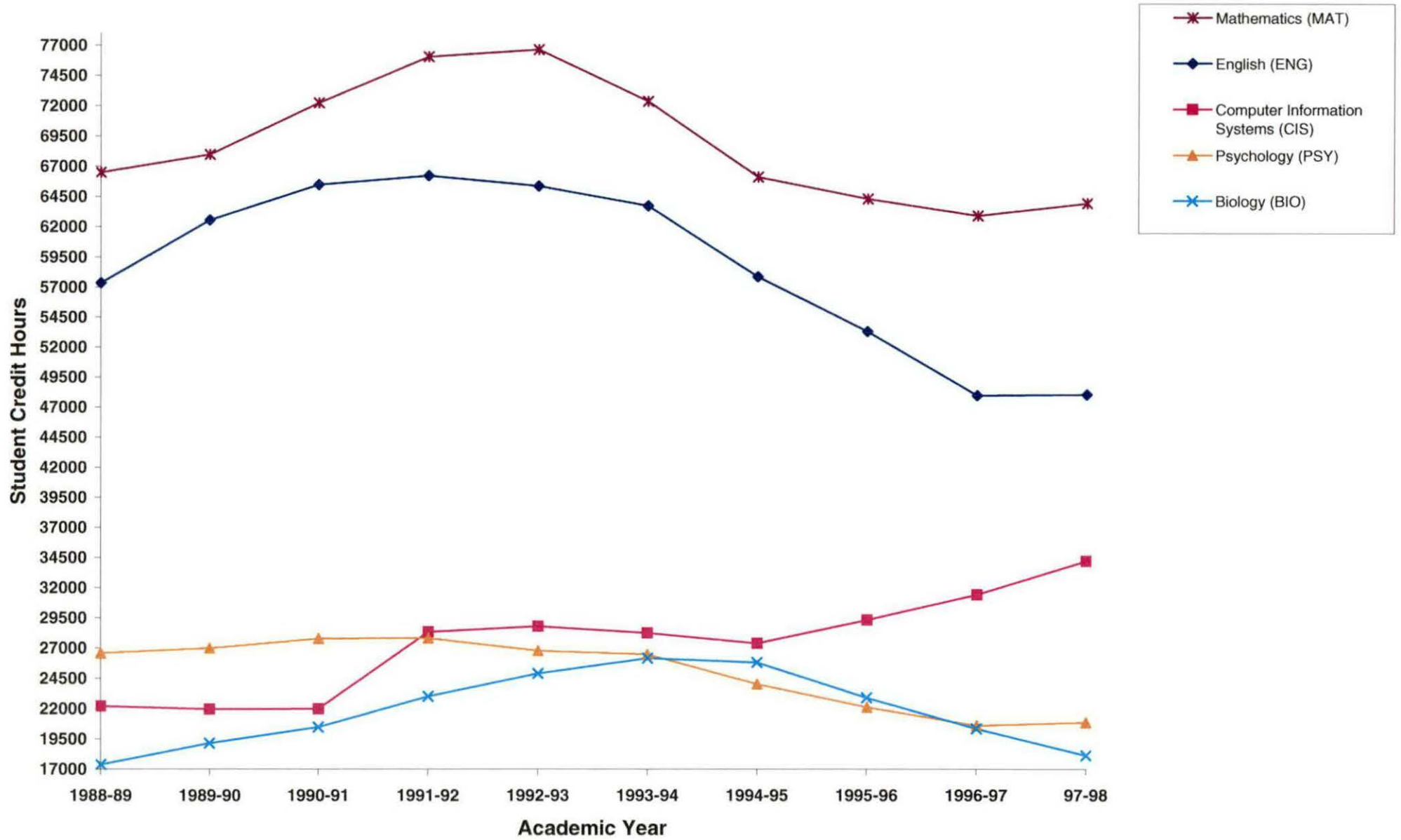
Course Prefix	Description	1997-98 SCH	5- Year % Change	10 Year % Change
ESL	English as a Second Language	9,165	2,010	3,174
ADT	Automobile Drawing	378	138	563
IIC	Individualized Instruction Center	1,220	-27	202
LIB	Library Technology	291	-1	165
EMT	Emergency Medical Technology	1,710	15	149
PSC	Physical Science	216	23	145
ECD	Early Childhood Development	2,190	36	116
SPA	Spanish	6,456	34	102
CAD	Computer Aided Design	7,315	14	102
ISC	Instructional Sport Camps	623	5	81
MDA	Medical Assisting	981	-5	69
GEO	Geography	657	33	61
CIS	Computer Information Systems	34,198	21	54
EXL	Exercise Science & Technology	925	-17	53
EDU	Education	270	3	53
ATW	Welding and Fabricating Technology	597	59	51
LGL	Legal Assisting	1,375	-15	50
PHY	Physics	3,794	-13	48
EGR	Pre-Engineering	925	3	48
PHI	Philosophy	5,904	12	37
DSB	Police Academy Science	300	-1	35
NUR	Nursing	7,336	14	31
ANT	Anthropology	1,629	-18	30
GER	German	1,092	-16	21
GSC	General Science	3,352	-12	15
ECT	Computer Hardware Engineering Technology	688	-32	12
APM	Apprentice Pattern Maker	480	58	10
HEA	Health	2,337	-39	10
MEC	Mechanical Technology	549	-14	10
THE	Theatre	1,487	10	10
RSP	Respiratory Therapy	731	-10	7
SPE	Speech	5,393	-22	6
FTI	Fire Technical Institute	1,758	-55	6
BIO	Biology	18,113	-31	4
PLS	Law Enforcement	5,063	-13	4
CHE	Chemistry	8,330	-32	3
PAS	Police Academy Science	2,299	38	2
HPT	Hospital Pharmacy Technology	342	-42	1
DHY	Dental Hygiene	1,124	4	-2
ATF	Fluid Power Technology	348	6	-3
ART	Art	10,593	-10	-3
MAT	Mathematics	63,930	-12	-4
HIS	History	11,901	0	-6
APP	Pre-Apprentice	256	8	-9
DEN	Dental Assisting	84	4	-10
CER	Ceramics	1,655	12	-11
ARC	Architecture	817	-12	-12

**Oakland Community College**  
**Student Credit Hours**  
**Sorted by Ten Year Percent Change**  
**(1988-89 through 1997-98)**

Course Prefix	Description	SCH	Change	Change
PER	Physical Education	7,868	-30	-12
DDT	Drafting Design Technology	2,580	-8	-13
HCA	Health Care Administration	458	-16	-14
FRE	French	1,792	-12	-15
ENG	English	48,022	-25	-16
ROB	Robotics Technology	1,076	-1	-17
MUS	Music	2,386	8	-17
MHA	Mental Health	1,914	-12	-19
DMS	Diagnostic Medical Sonography	766	-8	-20
PSY	Psychology	20,853	-21	-22
MED	Medical Technology	1,461	-47	-22
POL	Political Science	14,652	-20	-24
HUM	Humanities	8,904	-20	-24
SOC	Sociology	8,790	-22	-26
SLS	Sign Language Studies	558	-23	-27
CIM	Computer Integrated Manufacturing	292	-4	-28
LSC	Life Science	1,976	-21	-31
ECO	Economics	9,732	-19	-32
CNS	Counseling	1,046	-16	-34
LST	Landscape Technology	1,321	-8	-34
BUS	Business Administration	16,394	-16	-35
ATA	Automobile Servicing	1,220	-33	-37
ACC	Accounting	13,701	-20	-40
FST	Food Service	2,704	-32	-41
MKT	Marketing	1,815	-11	-46
WOD	Woodworking	90	-9	-47
FSN	Foundations of Natural Sciences	376	-27	-48
BIS	Business Information Systems	4,730	-22	-49
TER	Climate Control Technology	828	-47	-53
APT	Apprentice Tinsmith	153	-31	-53
VBT	Vehicle Body	562	-48	-54
GRN	Gerontology	231	-68	-55
ATM	Machine Tool Technology	431	-62	-59
GCA	Graphics/Commercial Art	883	-36	-64
SSC	Social Science	2,142	-41	-64
FSH	Foundations of Humanities	1,144	-43	-65
FLT	Aviation Flight Technology	313	-63	-65
ELT	Electronics Technology	279	-30	-68
AET	Alternate Energies	68	-35	-69
FSS	Foundations of Social and Behavioral Sciences	260	-55	-71
TED	Pre-Apprentice Drafting	138	-44	-73
IND	Industrial Sciences	93	-82	-74
CSC	Community Service Course	2,450	-57	-76
QAT	Quality Assurance Technology	81	-69	-78
APD	Apprentice Drafting	156	-40	-82
ETT	Electrical Trades Technology	290	100	-85
RET	Retailing	60	-91	-87
KEH	Kindergarten, Elementary, High School Ed	88	1,668	-95
JOR	Journalism	3	-98	-99
COM	Communications	6	-99	-100

Source: OCC, Office of Institutional Research (ACS-6)

# Oakland Community College Trend in Total Student Credit Hours Top 5 SCH-Generating Course Prefix Codes (1988-89 through 1997-98)



**Oakland Community College  
Student Credit Hours by Cluster  
(1997-98)**

**Clusters Ranked by  
97-98 Credit Hours**

Cluster	1997-98	
	SCH	% of Total
Math & Sciences	101,012	24
Humanities & Language	91,881	21
Business	72,273	17
Social Science	71,417	17
Public Services	31,984	7
Allied Health	20,961	5
Commercial & Fine Arts	19,328	4
Automotive Technologies	17,052	4
Non-Automotive Technologies	5,613	1
<b>GRAND TOTAL</b>	<b>431,521</b>	<b>100</b>

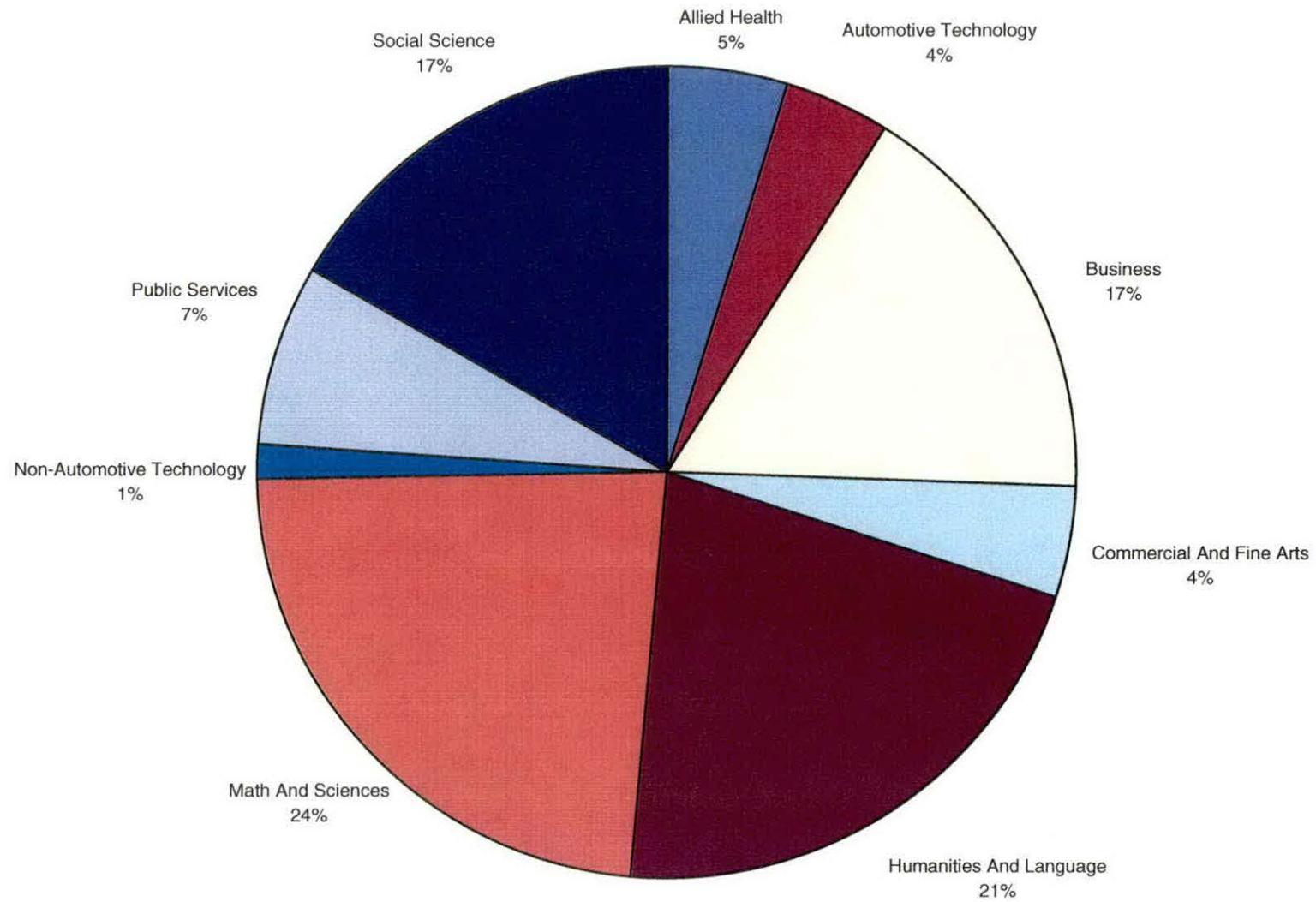
**Clusters Ranked by  
Five Year Percent Change**

Cluster	1997-98		5- Year
	SCH	% of Total	% Change
Commercial & Fine Arts	19,328	4	-4
Business	72,273	17	-4
Automotive Technologies	17,052	4	-9
Humanities & Language	91,881	21	-10
Allied Health	20,961	5	-13
Math & Sciences	101,012	23	-18
Social Science	71,417	17	-19
Public Services	31,984	7	-25
Non-Automotive Technologies	5,613	1	-31
<b>GRAND TOTALS</b>	<b>431,521</b>	<b>100</b>	<b>-14</b>

**Clusters Ranked by  
Ten Year Percent Change**

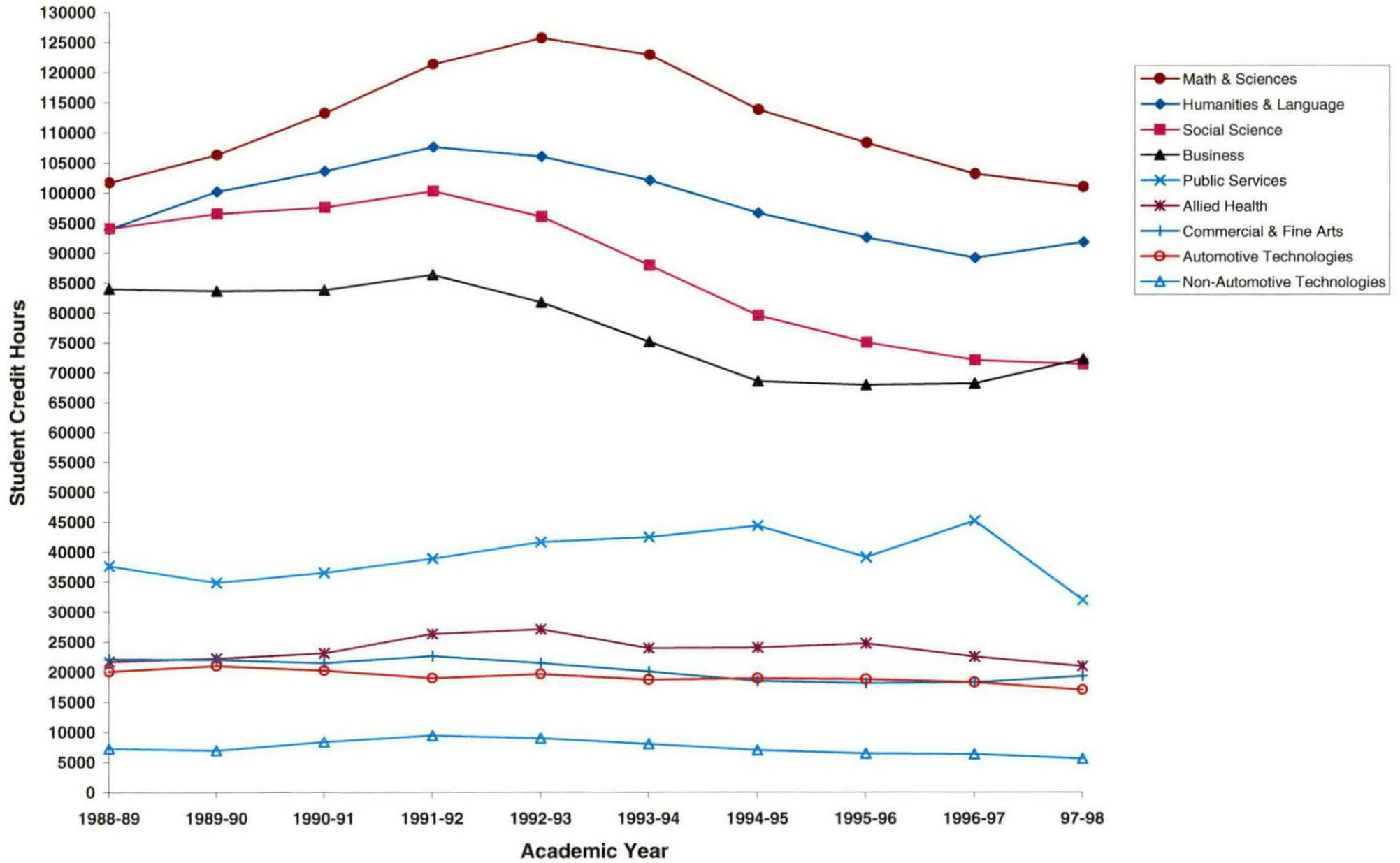
Cluster	1997-98		10- Year
	SCH	% of Total	% Change
Math & Sciences	101,012	23.4	-1
Humanities & Language	91,881	21.3	-2
Allied Health	20,961	4.9	-3
Commercial & Fine Arts	19,328	4.5	-13
Business	72,273	16.7	-14
Automotive Technologies	17,052	4.0	-15
Public Services	31,984	7.4	-15
Non-Automotive Technologies	5,613	1.3	-23
Social Science	71,417	16.6	-24
<b>GRAND TOTALS</b>	<b>431,521</b>	<b>100</b>	<b>-11</b>

# Oakland Community College Student Credit Hours by Cluster (1997-98)



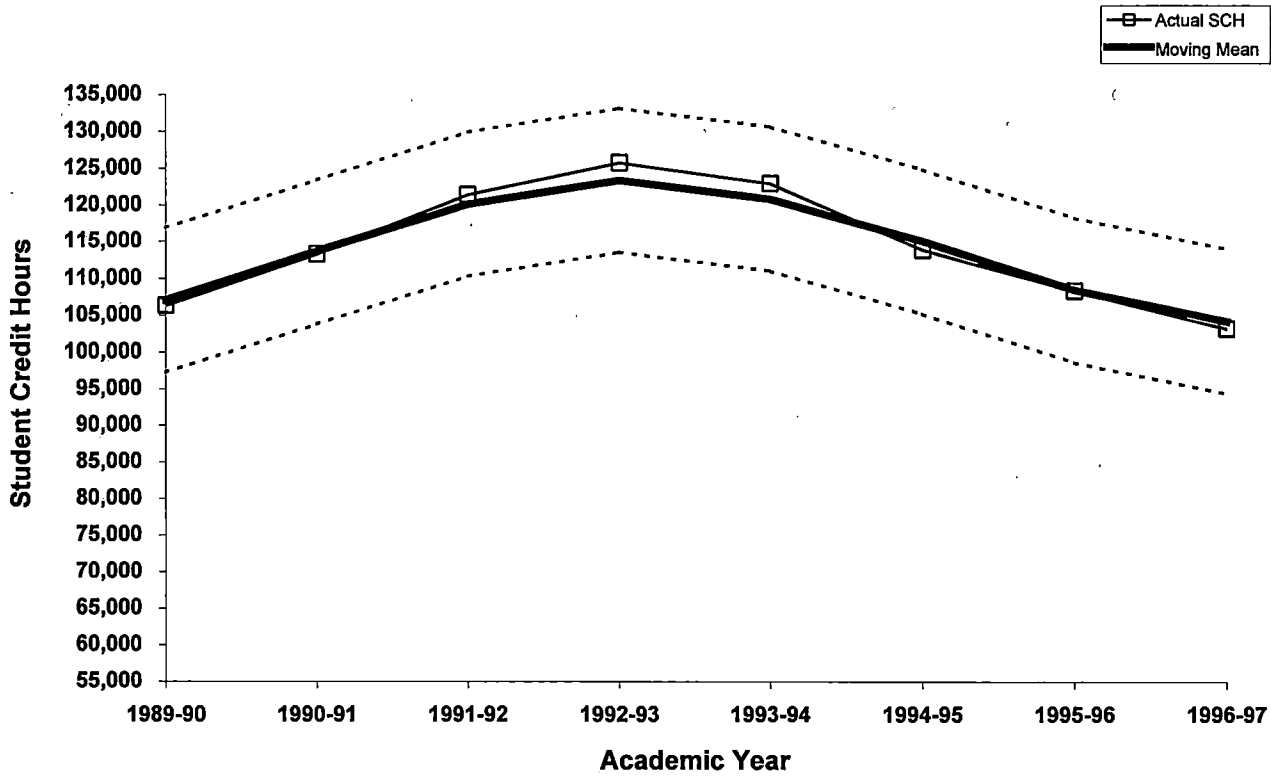


# Oakland Community College Trend in Total Student Credit Hours by Cluster (1988-89 through 1997-98)

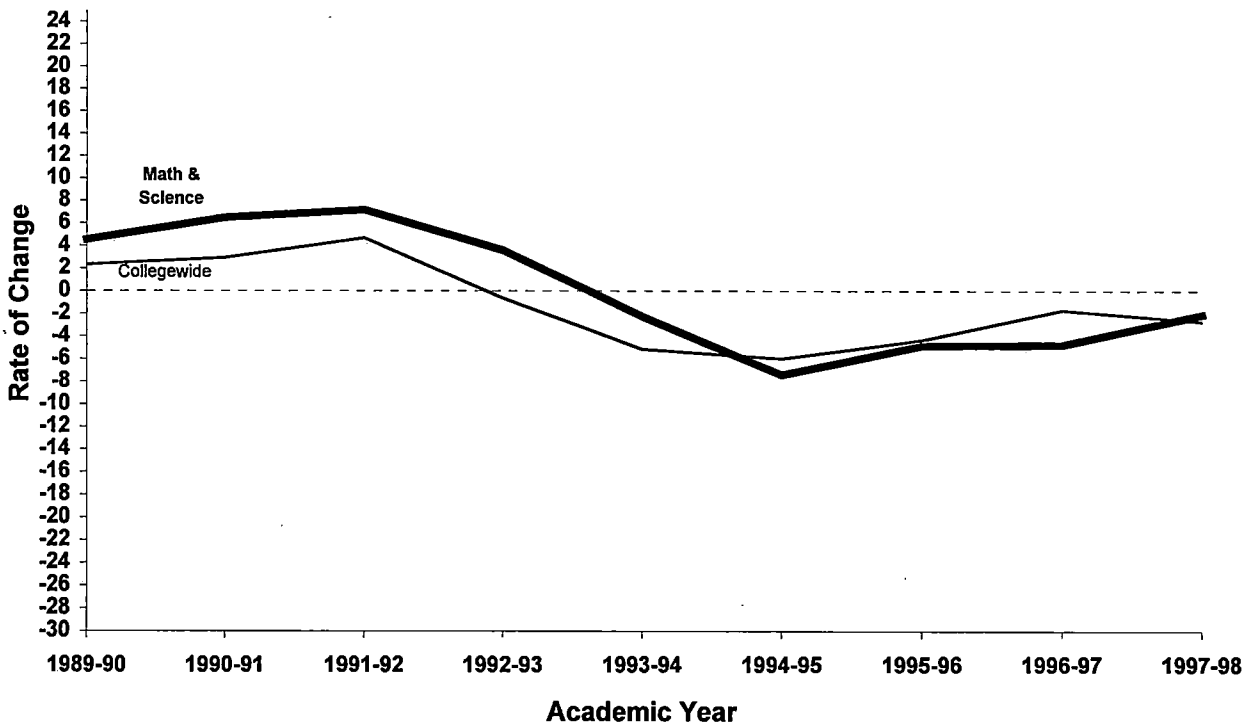


**Oakland Community College  
Math and Sciences Cluster  
(1989-90 through 1997-98)**

**3-Year Moving Mean**

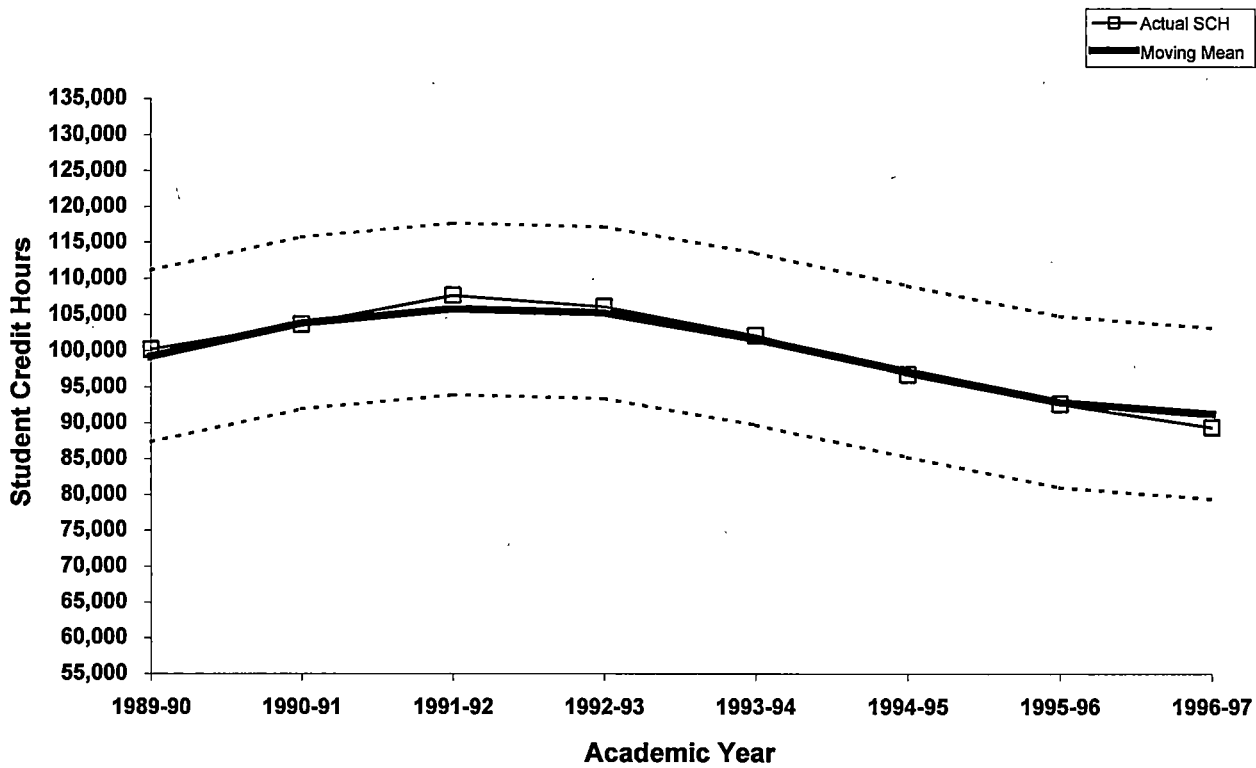


**Rate of Change in Student Credit Hours**

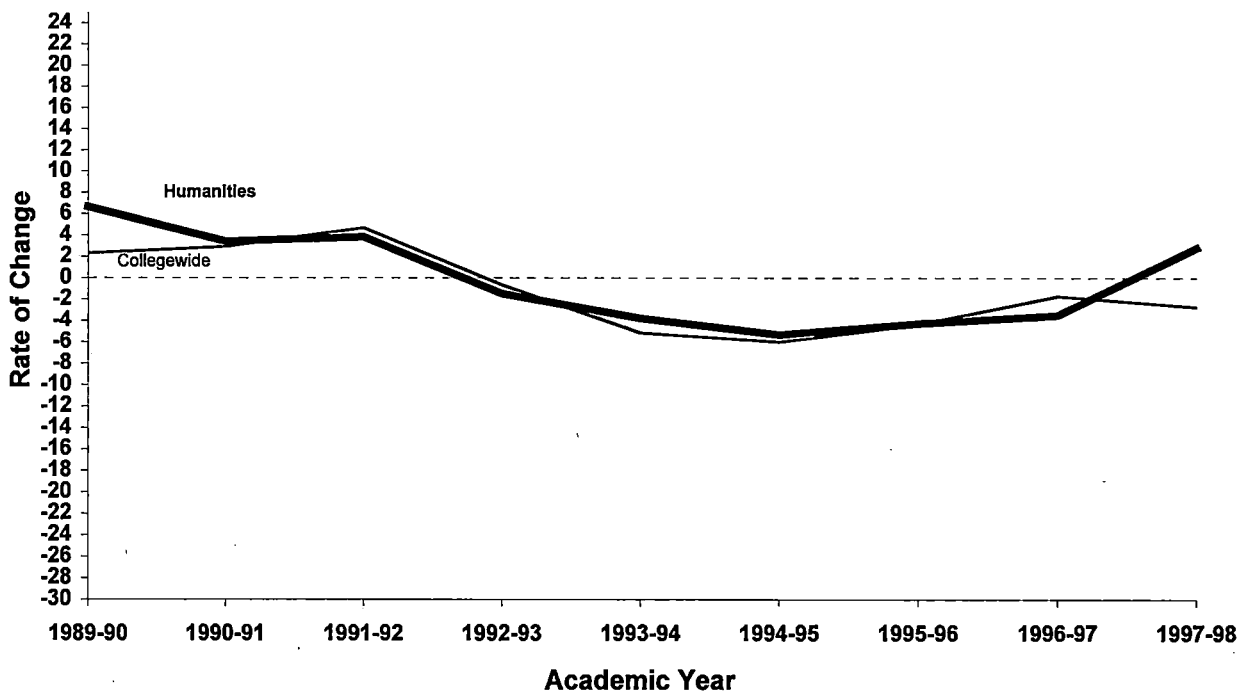


**Oakland Community College  
Humanities and Languages Cluster  
(1989-90 through 1997-98)**

**3-Year Moving Mean**

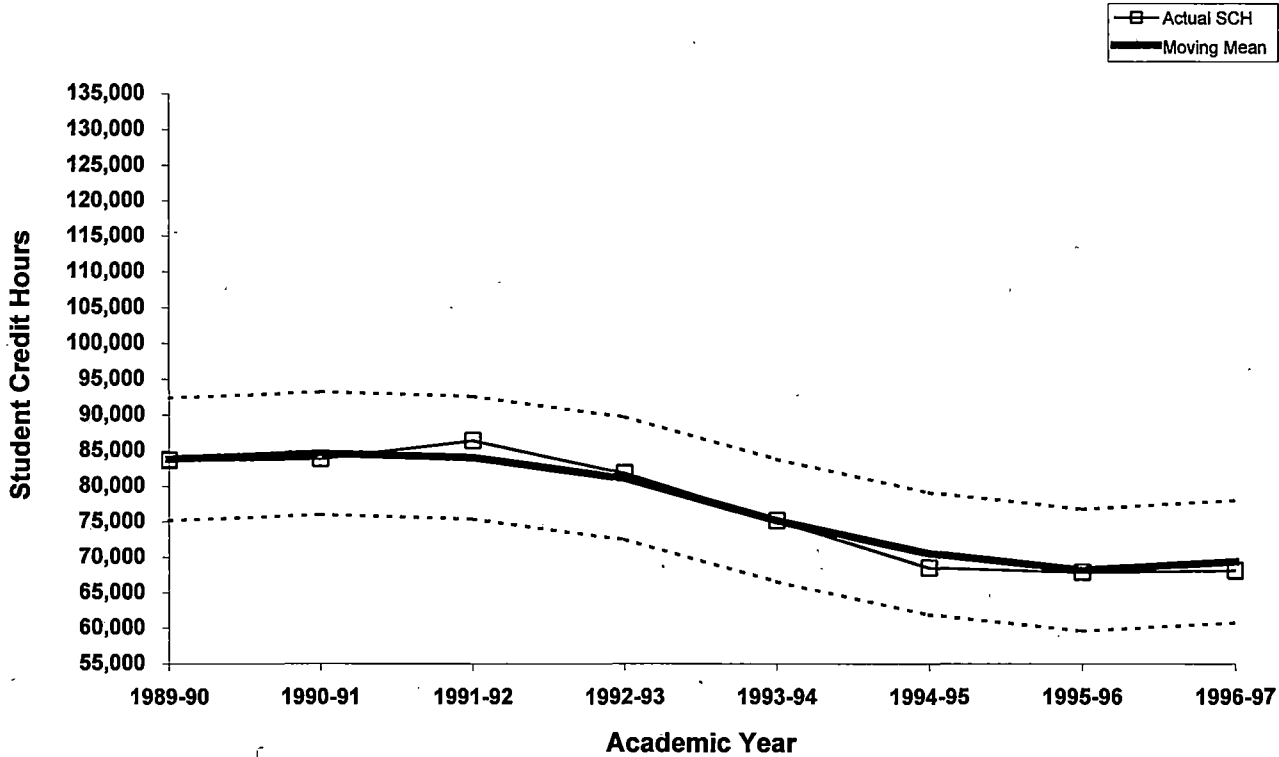


**Rate of Change in Student Credit Hours**

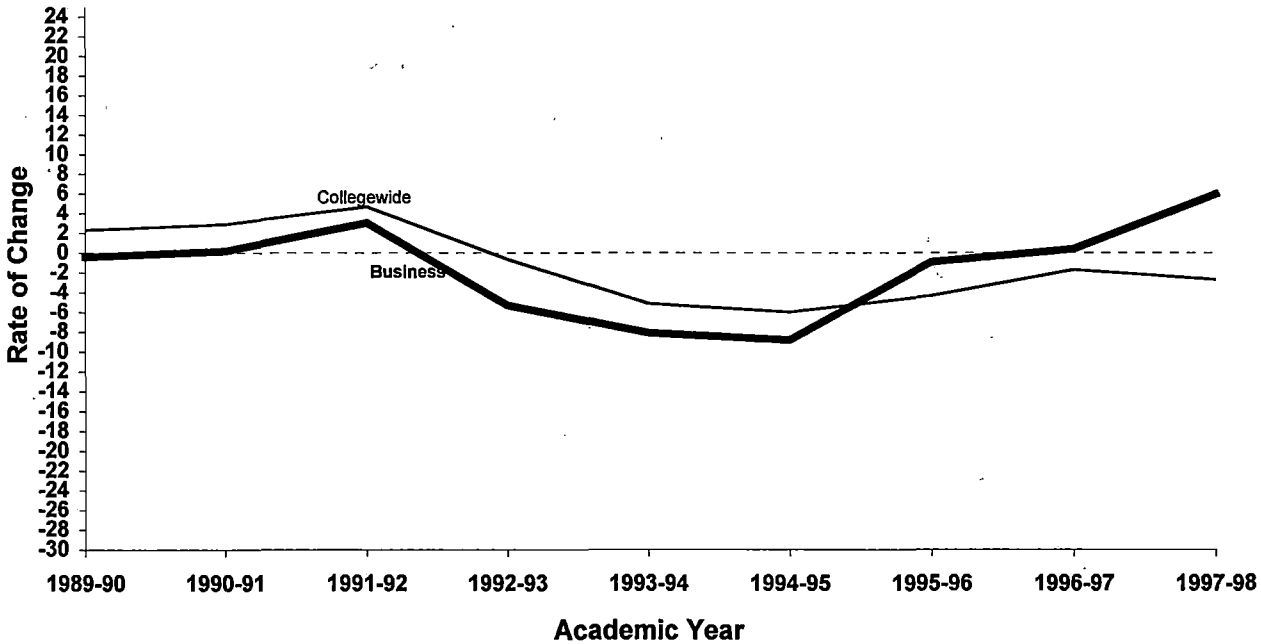


**Oakland Community College  
Business Cluster  
(1989-90 through 1997-98)**

**3-Year Moving Mean**

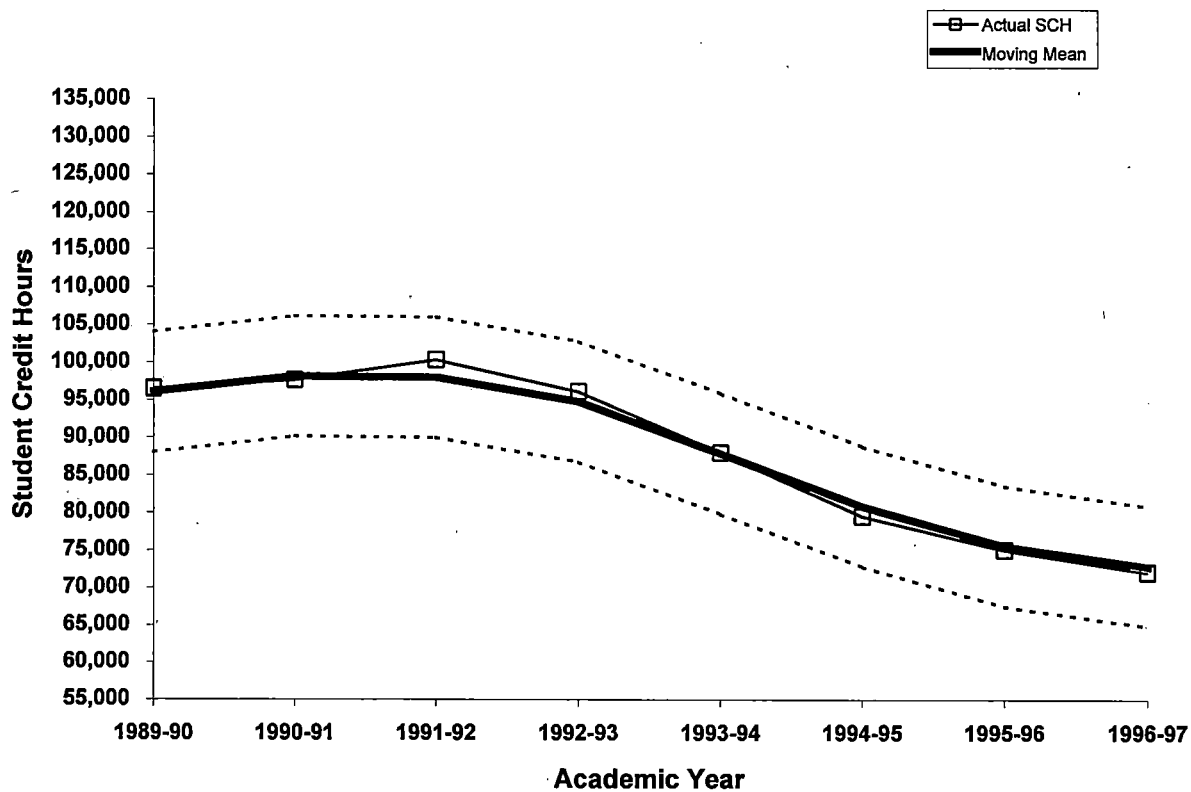


**Rate of Change in Student Credit Hours**

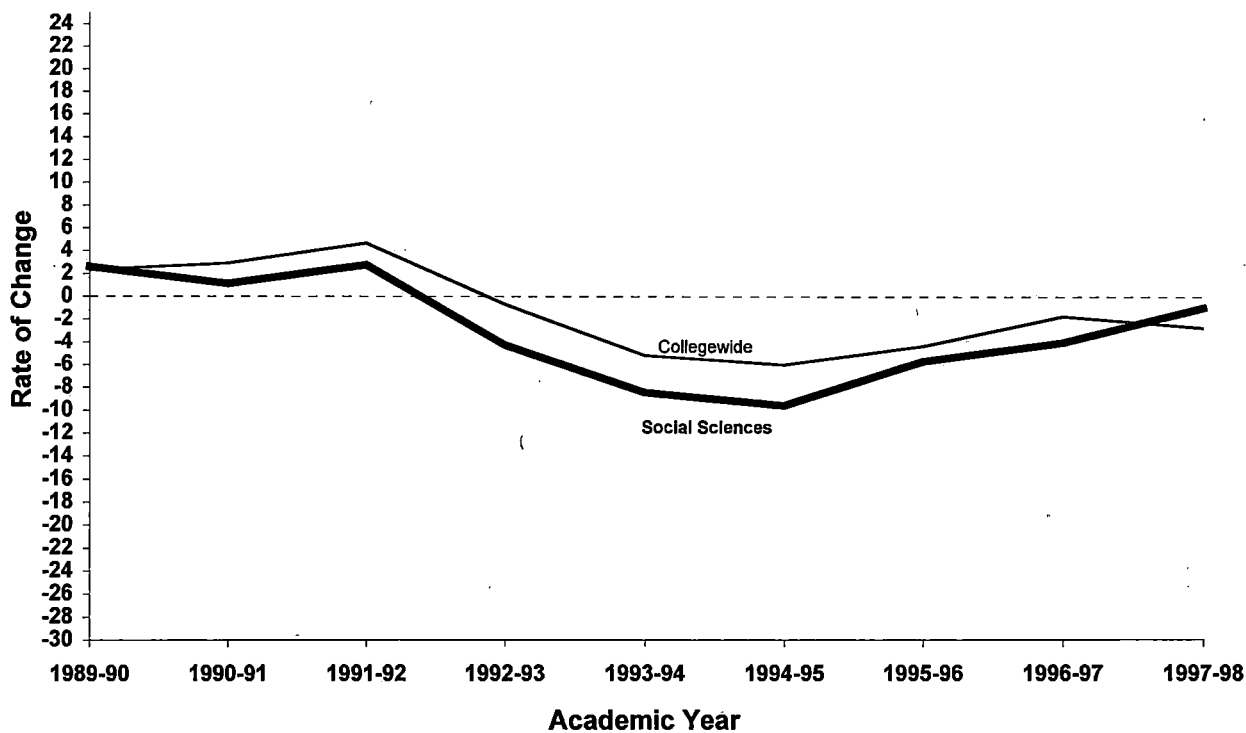


Oakland Community College  
 Social Sciences Cluster  
 (1989-90 through 1997-98)

3-Year Moving Mean

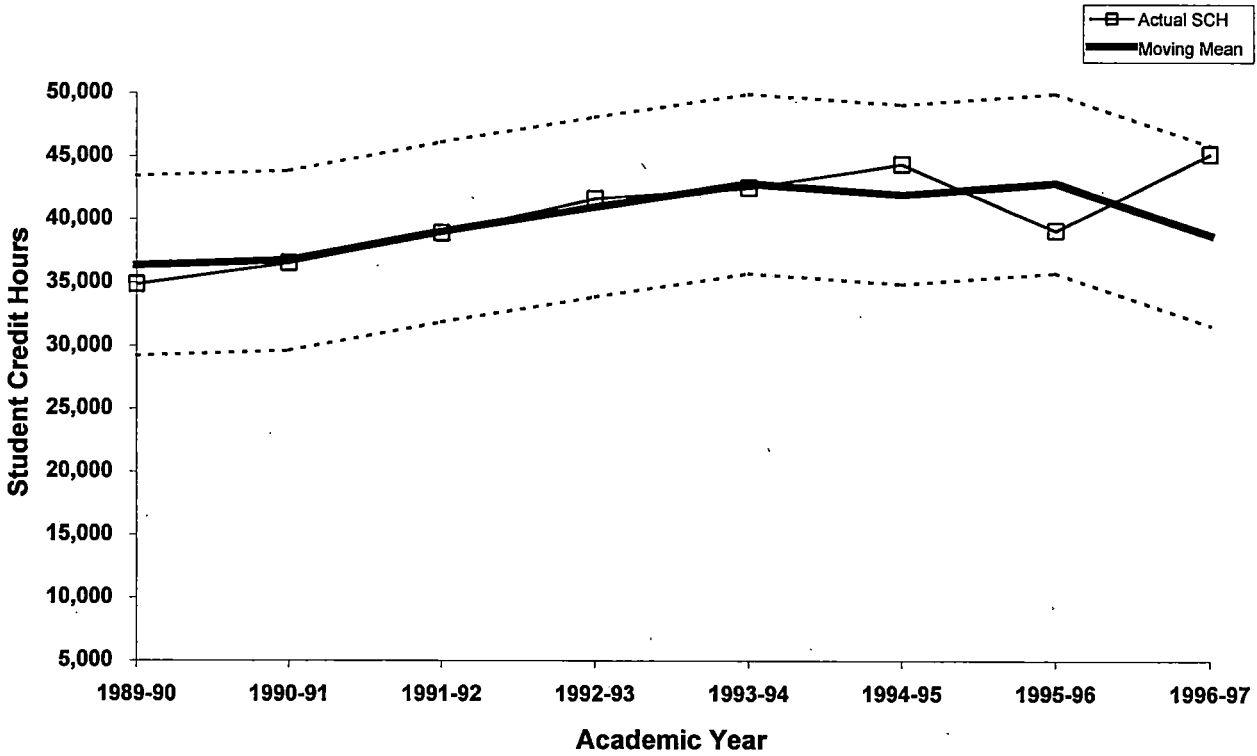


Rate of Change in Student Credit Hours

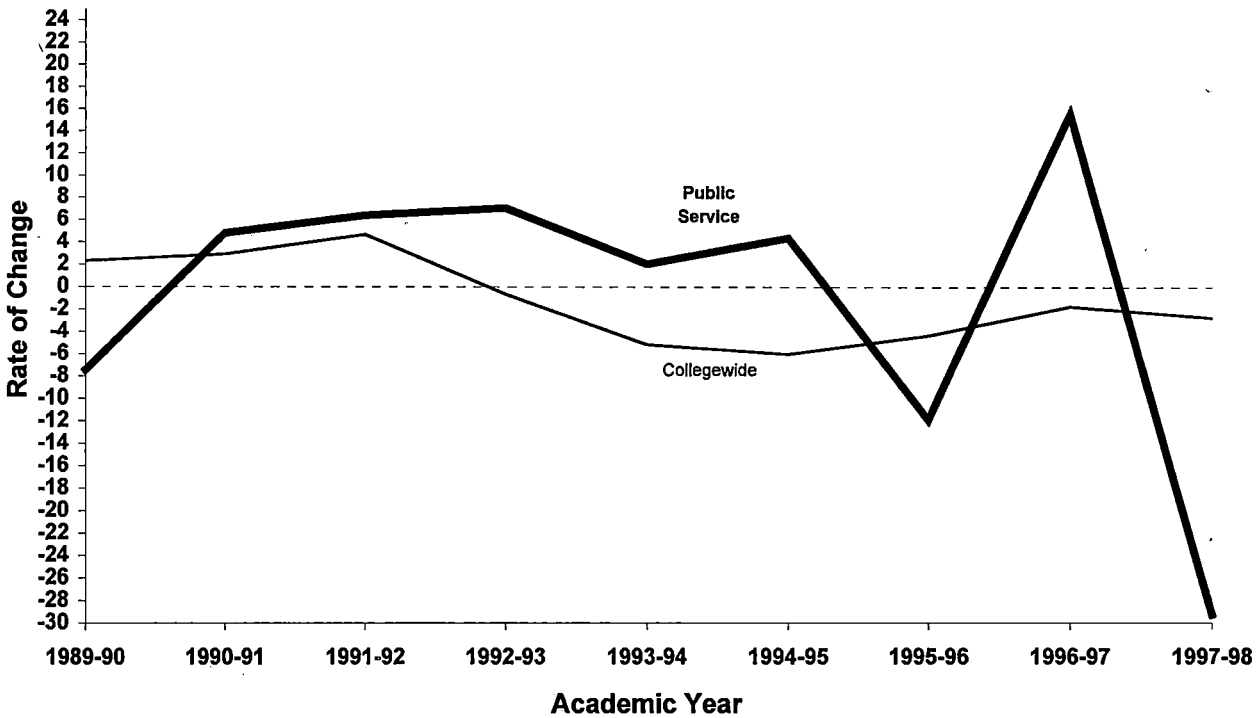


**Oakland Community College  
Public Services Cluster  
(1989-90 through 1997-98)**

**3-Year Moving Mean**

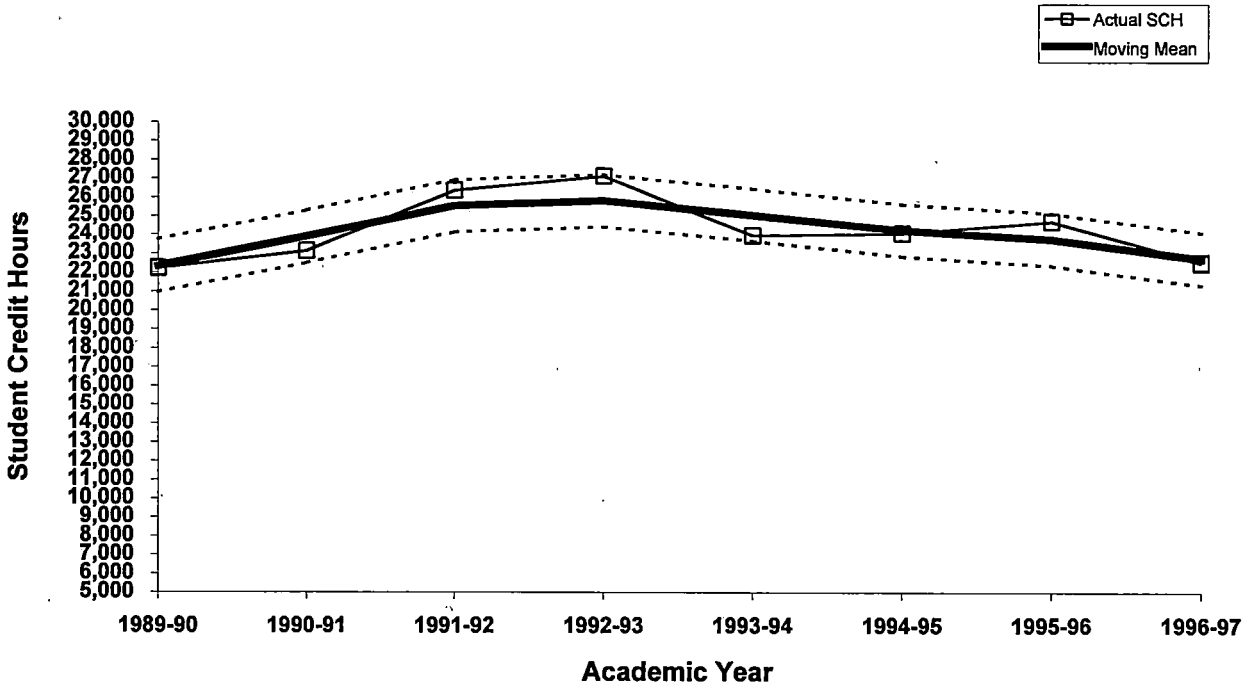


**Rate of Change in Student Credit Hours**

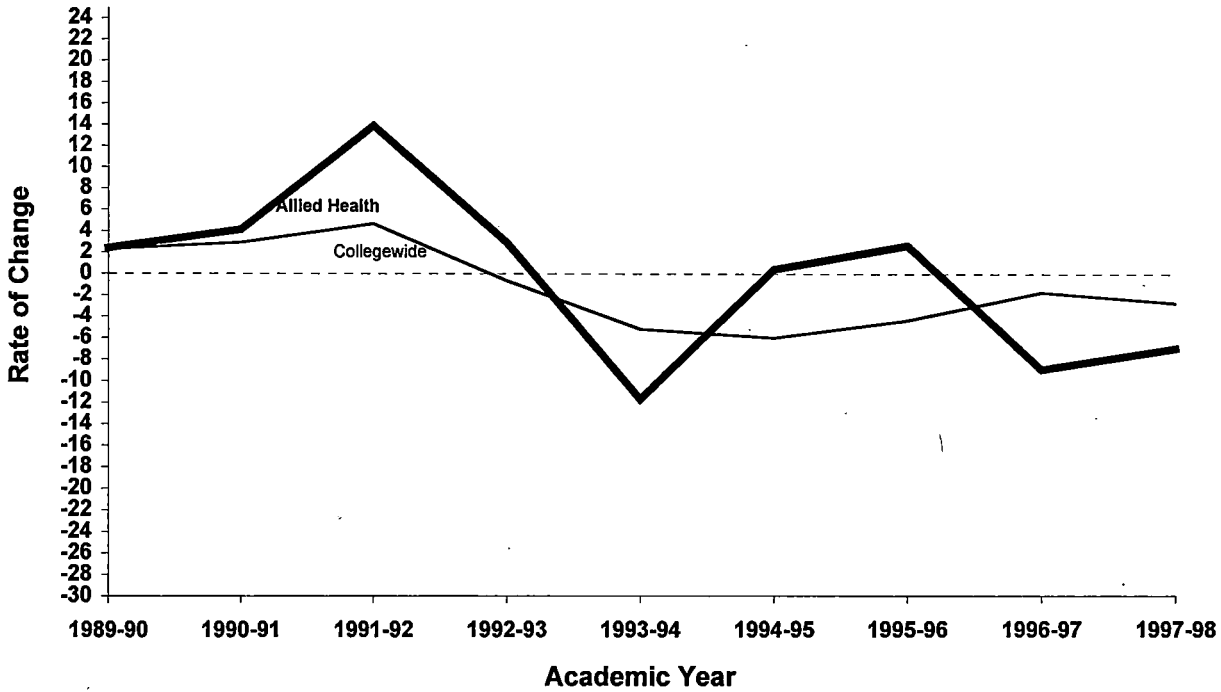


**Oakland Community College  
Allied Health Cluster  
(1989-90 through 1997-98)**

**3-Year Moving Mean**

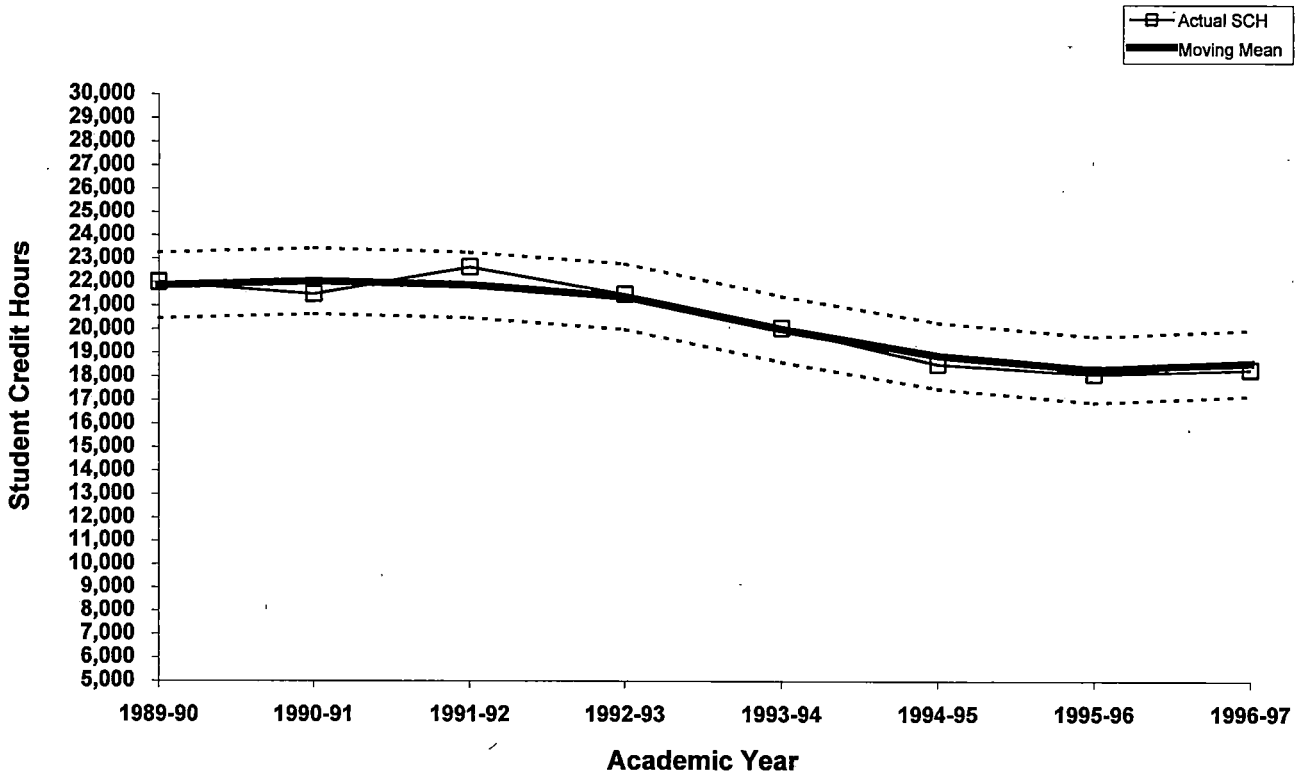


**Rate of Change in Student Credit Hours**

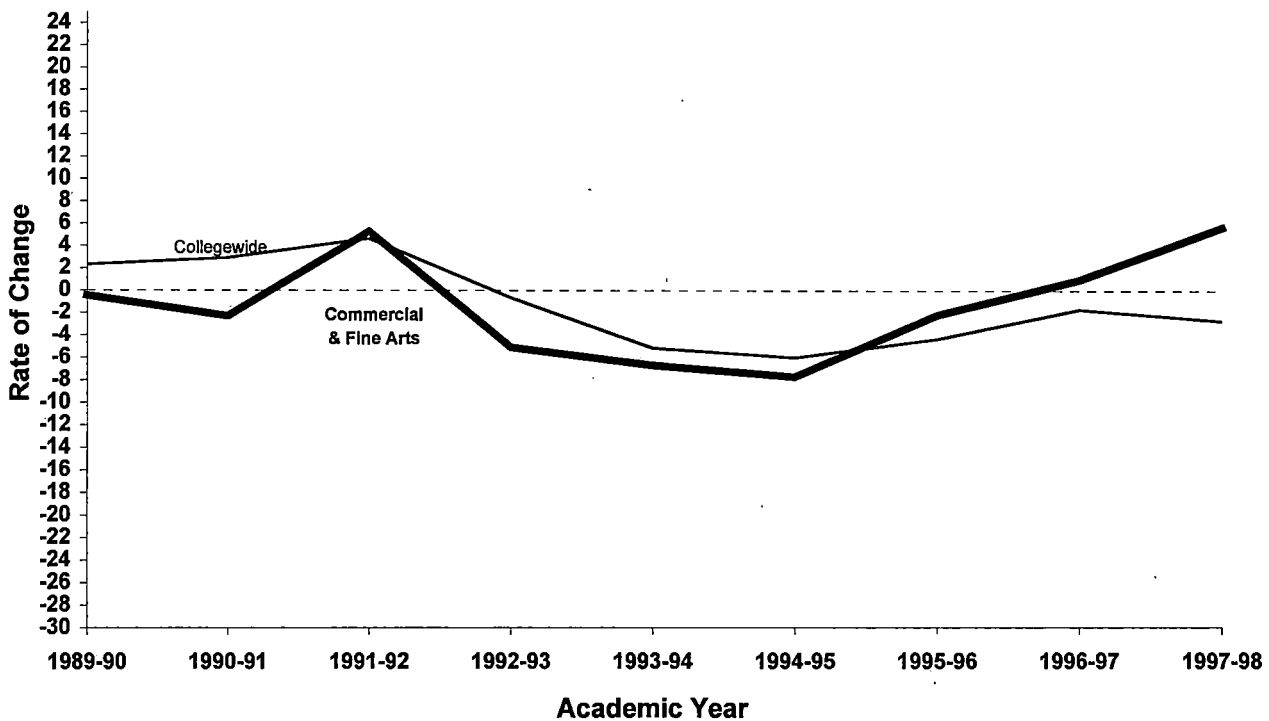


**Oakland Community College  
Commercial and Fine Arts Cluster  
(1989-90 through 1997-98)**

**3-Year Moving Mean**



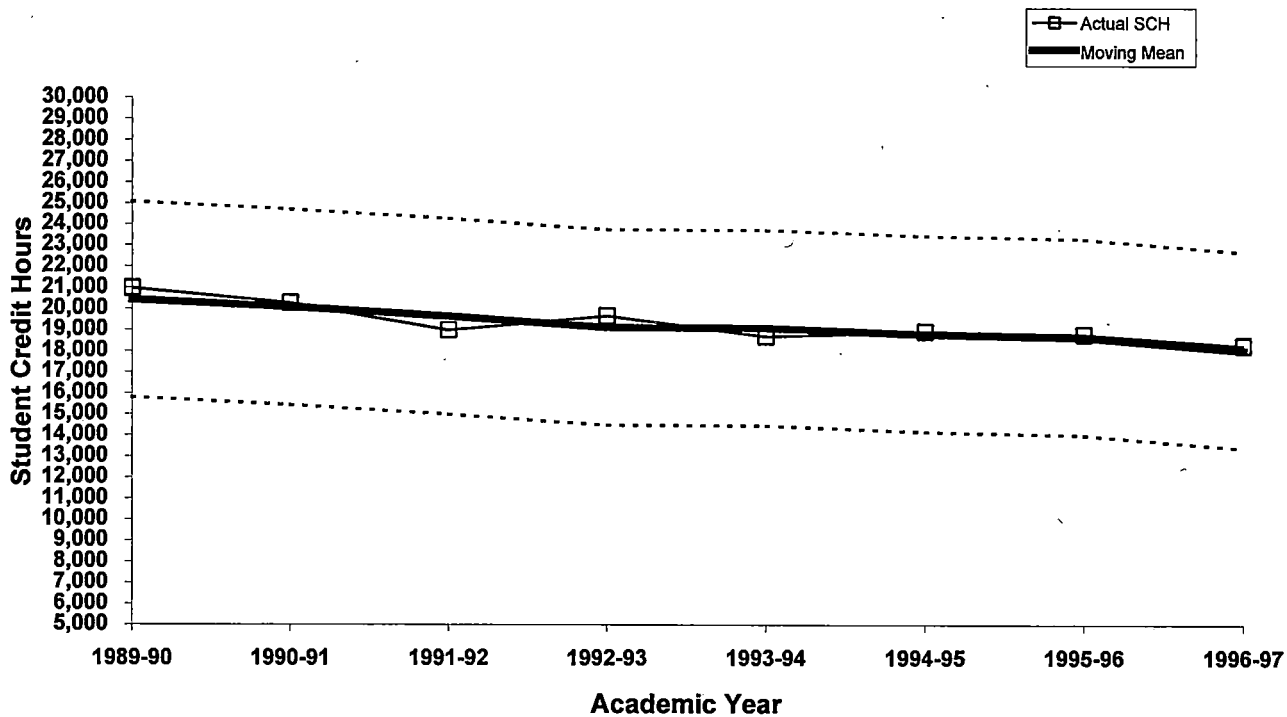
**Rate of Change in Student Credit Hours**



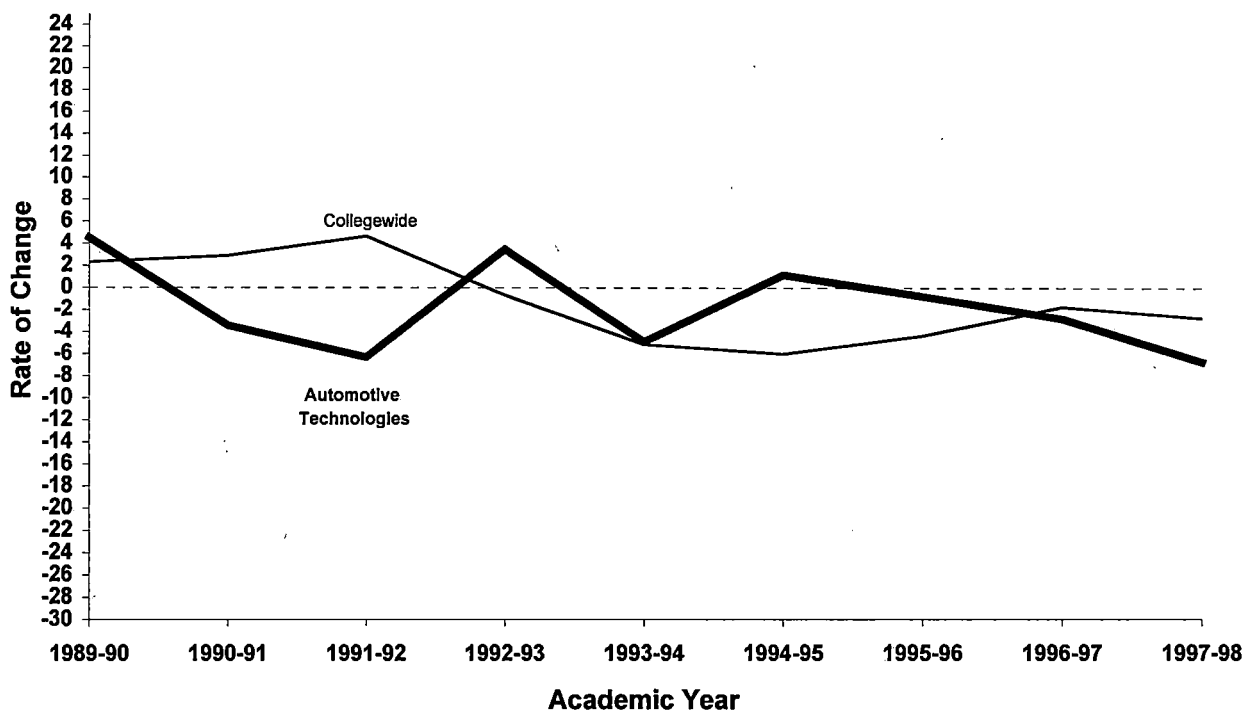


**Oakland Community College  
Automotive Technologies Cluster  
(1989-90 through 1997-98)**

**3-Year Moving Mean**

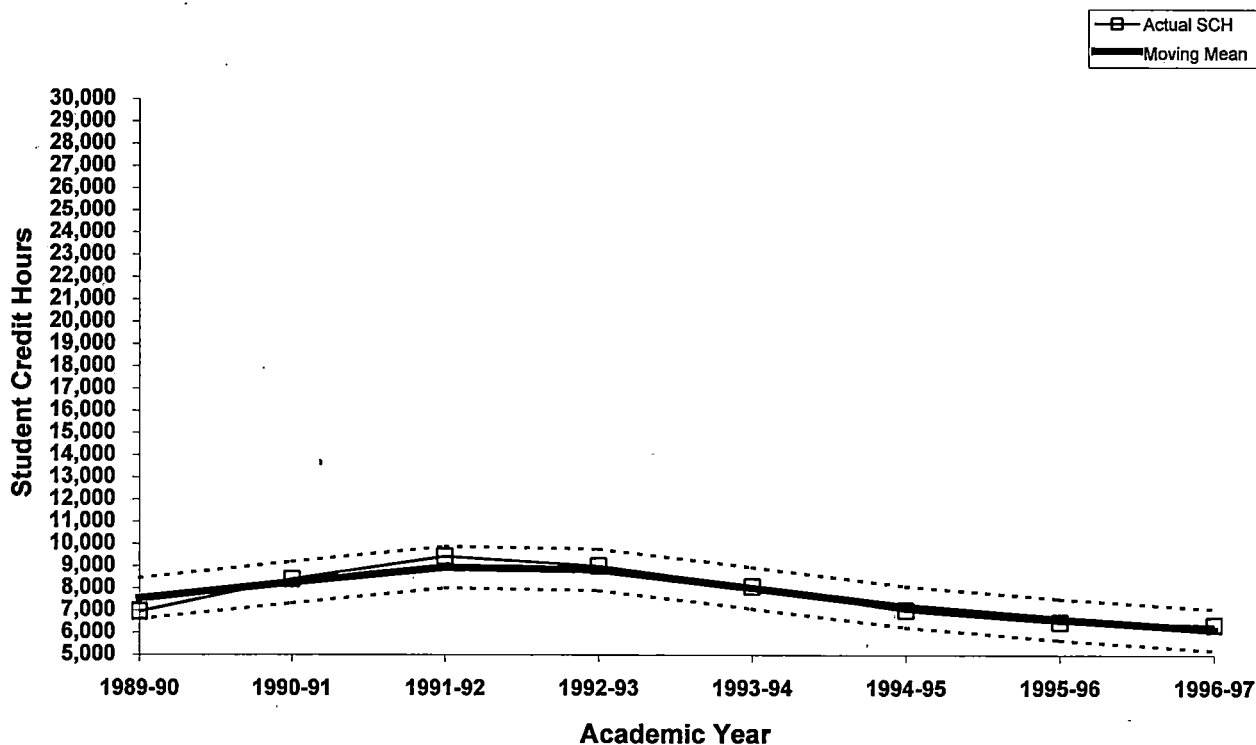


**Rate of Change in Student Credit Hours**

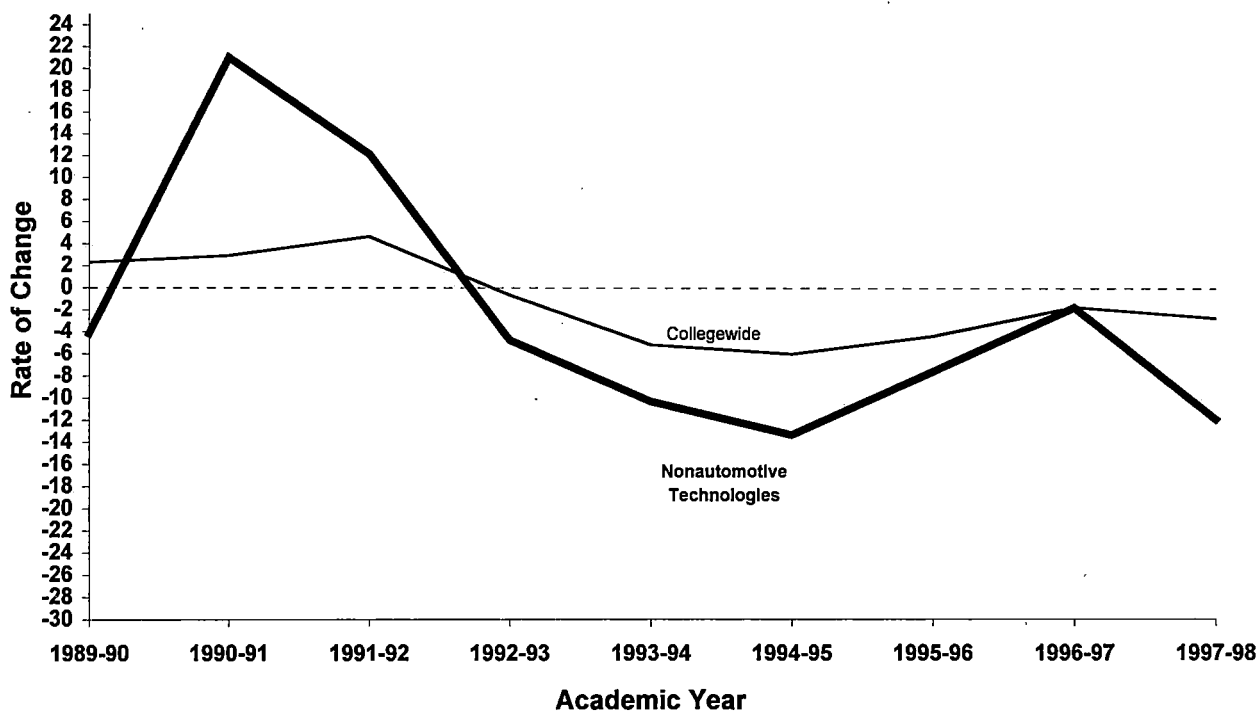


**Oakland Community College  
Non-Automotive Technologies Cluster  
(1989-90 through 1997-98)**

**3-Year Moving Mean**



**Rate of Change in Student Credit Hours**



# Oakland Community College

## List of Courses Within Curriculum Clusters

### Allied Health

DEN	Dental Assisting
DHY	Dental Hygiene
DMS	Diagno. Med Sonography
EMT	Emergency Med Tech
EXL	Exercise Science & Technology
HCA	Health Care Admin.
HEA	Health
HPT	Hospital Pharmacy Tech
MDA	Medical Assisting
MED	Medical Technology
MHA	Mental Health
NCT	Noninvasive Cardiovascular
NUR	Nursing
PNE	Practical Nurse Education
RAD	Radiologic Tech
RSP	Respiratory Therapy

### Automotive Technologies

ADT	Automobile Drawing
APD	Apprentice Drafting
APM	Apprentice Mathematics
APP	Apprentice Physics
APS	Apprentice Shop
APT	Apprentice Technical
ATA	Automobile Servicing
ATF	Fluid Power Tech
ATM	Machine Tool Tech
ATW	Welding/Fabrication Tech
AUT	Automotive Tech
CAD	Computer Aided Design
CIM	Computer Integrated Mfg.
DDT	Drafting Design Tech/ DRT
DHE	Diesel/Heavy Equipment
DRT	Drafting
EPT	Engineering Physical Test
ETT	Electrical Trades Tech
IND	Industrial Sciences
IPD	Industrial Prod. Design
MEC	Mechanical Technology
PCT	Plastics Composite Application
QAT	Quality Assurance Tech
ROB	Robotics Tech
TEA	Apprentice Automotive
TED	Pre-Apprentice Drafting
TEM	Pre-Apprentice Math
TEO	Operating Engineers
TET	Pre-Apprentice Phys. Sci
TEW	Pre-Apprentice Welding
VBT	Vehicle Body

### Business

ACC	Accounting
BIS	Bus Info Sys / OIS / SEC
BUS	Business Administration
CIS	Computer Info Sys / DPR
LGL	Legal Assisting
MKT	Marketing
RES	Real Estate
RET	Retailing

### Commercial and Fine Arts

ART	Art
AVM	Audio-Visual Tech
CER	Ceramics
GCA	Graphics/Commercial Art
GRA	Graphics
PHO	Photography
PPT	Publication Technology
THE	Theatre
WOD	Woodworking

### Humanities and Language

ARB	Arabic
COM	Communications
ENG	English
ESL	English Language Institute
FRE	French
FSC	Found Stud./Communic.
FSH	Found Stud./Humanities
GER	German
HUM	Humanities
ITA	Italian
JOR	Journalism
JPN	Japanese
MUS	Music
PHI	Philosophy
SLS	Sign Language Studies
SPA	Spanish
SPE	Speech

# Oakland Community College

## List of Courses Within Curriculum Clusters

### Math and Sciences

---

BIO	Biology
CHE	Chemistry
EGR	Pre-Engineering
FSN	Found Stud./Nat.Science
GSC	General Science
LSC	Life Science
MAT	Mathematics
PHY	Physics
PSC	Physical Science

### Nonautomotive Technologies

---

AET	Alternative Energy Tech
ARC	Architectural Tech
CHT	Chemistry Tech
ECT	Electronic Microprocessing
EEC	Electrical/Electronics Tech
ELT	Electronics Tech
FLT	Aviation Flight Tech
LST	Landscape Tech
TEL	Telecommunications Technology
TEP	Plastics Technology
TER	Climate Control Tech

### Social Sciences

---

ANT	Anthropology
DSB	Dir.Study/Behav/Soc.Sci.
ECO	Economics
EDU	Education
FSS	Found Stud./Soc.Science
GEO	Geography
GRN	Gerontology
HIS	History
POL	Political Science
PSY	Psychology
SOC	Sociology
SSC	Social Science

### Public Services

---

BPI	Business Professional Inst.
BTC	Business Technology Center
CEC	Continuing Education
CNS	Counseling
CRC	Community Recreation
CSC	Community Service Course
CWA	Co-Op
ECD	Early Childhood Dev.
FFT	Fire Fighter Technology
FST	Food Service
FTI	Fire Technical Institute
IIC	Indiv. Instruction Center
ISC	Instructional Sport Camps
KEH	Kind., Elementary, High Sch
LIB	Library Tech
MDB	Management Development Busin
MTS	Manufacturing Technolglcal Ser
PAS	Police Academy Science
PER	Physical Education
PLS	Law Enforcement
PPI	Public Professional Inst.
X..	Pentastar Courses