

**Oakland Community College**  
**Fall 1997 High School Penetration Report by Recruiting Region**  
**(1993-1997)**

High School	1993			1994			1995			1996			1997			Percent Change 5-Year		
	High School Grads	Entered OCC	Percent	High School Grads	Entered OCC	Percent	High School Grads	Entered OCC	Percent	High School Grads	Entered OCC	Percent	High School Grads	Entered OCC	Percent	High School Grads	Entered OCC	Absolute Percent
<b>Auburn Hills Region</b>																		
<b>Auburn Hills - Public</b>																		
Adams	425	57	13.4	423	56	13.2	430	73	17.0	409	48	11.7	412	62	15.0	-3.1	8.8	1.6
Athens	412	66	16.0	382	65	17.0	371	66	17.8	360	60	16.7	315	48	15.2	-23.5	-27.3	-0.8
Avondale	165	39	23.6	133	33	24.8	151	40	26.5	168	33	19.6	162	32	19.8	-1.8	-17.9	-3.9
Lahser	247	21	8.5	210	20	9.5	210	11	5.2	263	28	10.6	250	20	8.0	1.2	-4.8	-0.5
Lake Orion	282	55	19.5	316	42	13.3	288	61	21.2	272	54	19.9	297	58	19.5	5.3	5.5	0.0
Oxford	169	34	20.1	164	32	19.5	170	39	22.9	180	41	22.8	180	40	22.2	6.5	17.6	2.1
Pontiac Central	292	31	10.6	185	44	23.8	193	41	21.2	171	14	8.2	197	21	10.7	-32.5	-32.3	0.0
Pontiac Northern	272	25	9.2	227	14	6.2	227	14	6.2	182	35	19.2	157	13	8.3	-42.3	-48.0	-0.9
Rochester	373	62	16.6	392	60	15.3	395	81	20.5	401	62	15.5	421	80	19.0	12.9	29.0	2.4
Troy	425	58	13.6	425	48	11.3	399	74	18.5	435	63	14.5	458	65	14.2	7.8	12.1	0.5
<b>Subtotal - Public</b>	<b>3,062</b>	<b>448</b>	<b>14.6</b>	<b>2,857</b>	<b>414</b>	<b>14.5</b>	<b>2,834</b>	<b>500</b>	<b>17.6</b>	<b>2,841</b>	<b>438</b>	<b>15.4</b>	<b>2,849</b>	<b>439</b>	<b>15.4</b>	<b>-7.0</b>	<b>-2.0</b>	<b>0.8</b>
<b>Auburn Hills - Private</b>																		
Academy of Sacred Heart	24	1	4.2	26	0	0.0	21	0	0.0	22	1	4.5	28	0	0.0	16.7	-100.0	-4.2
Bethany Christian	26	2	7.7	16	0	0.0	23	1	4.3	16	1	6.3	26	0	0.0	0.0	-100.0	-7.7
Cranbrook Kingswood	181	2	1.1	151	1	0.7	182	3	1.6	178	1	0.6	177	0	0.0	-2.2	-100.0	-1.1
Detroit Country Day	118	0	0.0	117	0	0.0	112	0	0.0	140	0	0.0	154	0	0.0	30.5	--	0.0
Eton Academy	16	0	0.0	13	0	0.0	12	0	0.0	13	0	0.0	10	0	0.0	-37.5	--	0.0
Greater Life Academy	5	0	0.0	5	3	60.0	10	0	0.0	7	3	42.9	5	2	40.0	0.0	--	40.0
Indianwood Christian	1	0	0.0	3	0	0.0	1	0	0.0	6	1	16.7	0	0	0.0	-100.0	--	0.0
Lutheran NW High School	60	10	16.7	54	6	11.1	49	4	8.2	59	3	5.1	56	4	7.1	-6.7	-60.0	-9.5
Notre Dame Prep.(Pontiac/Oakland)	20	3	15.0	36	14	38.9	22	5	22.7	30	5	16.7	44	3	6.8	120.0	0.0	-8.2
Oakland Christian School	53	11	20.8	40	4	10.0	52	11	21.2	31	12	38.7	53	8	15.1	0.0	-27.3	-5.7
Oxford Christian Academy	5	2	40.0	10	1	10.0	6	1	16.7	11	3	27.3	6	3	50.0	20.0	50.0	10.0
Roch Hls Christ. School	16	0	0.0	14	1	7.1	15	1	6.7	10	2	20.0	10	0	0.0	-37.5	--	0.0
Roeper City & Country	23	1	4.3	38	0	0.0	44	1	2.3	40	0	0.0	35	1	2.9	52.2	0.0	-1.5
<b>Subtotal - Private</b>	<b>548</b>	<b>32</b>	<b>5.8</b>	<b>523</b>	<b>30</b>	<b>5.7</b>	<b>549</b>	<b>27</b>	<b>4.9</b>	<b>563</b>	<b>32</b>	<b>5.7</b>	<b>604</b>	<b>21</b>	<b>3.5</b>	<b>10.2</b>	<b>-34.4</b>	<b>-2.4</b>
<b>Total - Auburn Hills</b>	<b>3,610</b>	<b>480</b>	<b>13.3</b>	<b>3,380</b>	<b>444</b>	<b>13.1</b>	<b>3,383</b>	<b>527</b>	<b>15.6</b>	<b>3,404</b>	<b>470</b>	<b>13.8</b>	<b>3,453</b>	<b>460</b>	<b>13.3</b>	<b>-4.3</b>	<b>-4.2</b>	<b>0.0</b>

**Oakland Community College**  
**Fall 1997 High School Penetration Report by Recruiting Region**  
**(1993-1997)**

High School	1993			1994			1995			1996			1997			Percent Change 5-Year		
	High School Grads	Entered OCC	Percent	High School Grads	Entered OCC	Percent	High School Grads	Entered OCC	Percent	High School Grads	Entered OCC	Percent	High School Grads	Entered OCC	Percent	High School Grads	Entered OCC	Absolute Percent
<b>Highland Lakes Region</b>																		
<b>Highland Lakes - Public</b>																		
Brandon	195	29	14.9	161	26	16.1	165	31	18.8	161	31	19.3	187	33	17.6	-4.1	13.8	2.8
Clarkston	405	77	19.0	338	74	21.9	352	71	20.2	401	90	22.4	340	70	20.6	-16.0	-9.1	1.6
Holly	177	21	11.9	205	21	10.2	192	22	11.5	201	33	16.4	209	21	10.0	18.1	0.0	-1.8
Lakeland	253	54	21.3	212	46	21.7	235	55	23.4	245	50	20.4	263	53	20.2	4.0	-1.9	-1.2
Milford	273	70	25.6	333	67	20.1	297	53	17.8	341	50	14.7	328	77	23.5	20.1	10.0	-2.2
Walled Lake Central	307	68	22.1	256	62	24.2	257	66	25.7	256	79	30.9	326	77	23.6	6.2	13.2	1.5
Walled Lake Western	269	53	19.7	248	57	23.0	252	70	27.8	265	57	21.5	335	63	18.8	24.5	18.9	-0.9
Waterford Kettering	260	63	24.2	253	59	23.3	237	71	30.0	234	45	19.2	209	58	27.8	-19.6	-7.9	3.5
Waterford Mott	246	55	22.4	254	73	28.7	250	63	25.2	253	70	27.7	243	64	26.3	-1.2	16.4	4.0
Subtotal - Public	2,385	490	20.5	2,260	485	21.5	2,237	502	22.4	2,357	505	21.4	2,440	516	21.1	2.3	5.3	0.6
<b>Highland Lakes - Private</b>																		
Our Lady of the Lakes	36	6	16.7	49	7	14.3	48	10	20.8	58	11	19.0	58	3	5.2	61.1	-50.0	-11.5
Springfld Christ. Acad.	27	3	11.1	15	6	40.0	12	0	0.0	21	6	28.6	14	0	0.0	-48.1	-100.0	-11.1
West Highland Christian	0	0	--	0	0	--	7	0	0.0	5	0	0.0	7	0	0.0	--	--	--
Subtotal - Private	63	9	14.3	64	13	20.3	67	10	14.9	84	17	20.2	79	3	3.8	25.4	-66.7	-10.5
<b>Total - Highland Lakes</b>	<b>2,448</b>	<b>499</b>	<b>20.4</b>	<b>2,324</b>	<b>498</b>	<b>21.4</b>	<b>2,304</b>	<b>512</b>	<b>22.2</b>	<b>2,441</b>	<b>522</b>	<b>21.4</b>	<b>2,519</b>	<b>519</b>	<b>20.6</b>	<b>2.9</b>	<b>4.0</b>	<b>0.2</b>
<b>Orchard Ridge Region</b>																		
<b>Orchard Ridge - Public</b>																		
Andover	208	15	7.2	218	20	9.2	201	15	7.5	197	11	5.6	226	3	1.3	8.7	-80.0	-5.9
Farmington	235	42	17.9	228	35	15.4	236	50	21.2	270	35	13.0	257	46	17.9	9.4	9.5	0.0
Groves	252	18	7.1	217	23	10.6	230	36	15.7	235	34	14.5	257	24	9.3	2.0	33.3	2.2
Harrison	229	39	17.0	203	45	22.2	264	44	16.7	229	42	18.3	213	32	15.0	-7.0	-17.9	-2.0
North Farmington	277	36	13.0	292	40	13.7	255	44	17.3	242	40	16.5	260	48	18.5	-6.1	33.3	5.5
Novi	261	46	17.6	244	40	16.4	294	58	19.7	285	32	11.2	276	38	13.8	5.7	-17.4	-3.9
Seaholm High School	299	23	7.7	230	24	10.4	269	26	9.7	267	17	6.4	248	18	7.3	-17.1	-21.7	-0.4
South Lyon	221	37	16.7	219	34	15.5	240	21	8.8	243	15	6.2	298	18	6.0	34.8	-51.4	-10.7
West Bloomfield	337	50	14.8	311	36	11.6	318	51	16.0	347	42	12.1	347	45	13.0	3.0	-10.0	-1.9
Subtotal - Public	2,319	306	13.2	2,162	297	13.7	2,307	345	15.0	2,315	268	11.6	2,382	272	11.4	2.7	-11.1	-1.8

**Oakland Community College**  
**Fall 1997 High School Penetration Report by Recruiting Region**  
**(1993-1997)**

High School	1993			1994			1995			1996			1997			Percent Change 5-Year		
	High School Grads	Entered OCC	Percent	High School Grads	Entered OCC	Percent	High School Grads	Entered OCC	Percent	High School Grads	Entered OCC	Percent	High School Grads	Entered OCC	Percent	High School Grads	Entered OCC	Absolute Percent
<b>Orchard Ridge - Private</b>																		
Brother Rice	127	9	7.1	135	14	10.4	135	6	4.4	147	3	2.0	161	4	2.5	26.8	-55.6	-4.6
Marian	98	13	13.3	96	5	5.2	109	7	6.4	109	1	0.9	128	1	0.8	30.6	-92.3	-12.5
Mercy	196	6	3.1	190	12	6.3	196	8	4.1	192	2	1.0	176	2	1.1	-10.2	-66.7	-1.9
St. Mary Prep.	39	1	2.6	49	6	12.2	46	1	2.2	58	4	6.9	67	5	7.5	71.8	400.0	4.9
Subtotal - Private	460	29	6.3	470	37	7.9	486	22	4.5	506	10	2.0	532	12	2.3	15.7	-58.6	-4.0
<b>Total - Orchard Ridge</b>	<b>2,779</b>	<b>335</b>	<b>12.1</b>	<b>2,632</b>	<b>334</b>	<b>12.7</b>	<b>2,793</b>	<b>367</b>	<b>13.1</b>	<b>2,821</b>	<b>278</b>	<b>9.9</b>	<b>2,914</b>	<b>284</b>	<b>9.7</b>	<b>4.9</b>	<b>-15.2</b>	<b>-2.3</b>
<b>RoyalOak/ Southfield Region</b>																		
<b>Royal Oak/Southfield - Public</b>																		
Berkley	250	38	15.2	222	48	21.6	250	65	26.0	230	34	14.8	258	43	16.7	3.2	13.2	1.5
Clawson	115	30	26.1	113	37	32.7	115	17	14.8	111	23	20.7	99	18	18.2	-13.9	-40.0	-7.9
Dondero	183	54	29.5	186	40	21.5	175	48	27.4	175	45	25.7	175	49	28.0	-4.4	-9.3	-1.5
Ferndale	192	27	14.1	190	31	16.3	205	37	18.0	214	50	23.4	189	44	23.3	-1.6	63.0	9.2
Hazel Park	221	38	17.2	200	35	17.5	195	45	23.1	237	35	14.8	171	32	18.7	-22.6	-15.8	1.5
Kimball	252	74	29.4	270	69	25.6	322	56	17.4	298	82	27.5	280	67	23.9	11.1	-9.5	-5.4
Lamphere	129	29	22.5	125	27	21.6	135	30	22.2	145	25	17.2	135	38	28.1	4.7	31.0	5.7
Madison	133	22	16.5	103	21	20.4	93	29	31.2	89	21	23.6	88	20	22.7	-33.8	-9.1	6.2
Oak Park	169	18	10.7	174	23	13.2	154	39	25.3	143	19	13.3	156	22	14.1	-7.7	22.2	3.5
Southfield	294	40	13.6	258	50	19.4	237	54	22.8	287	49	17.1	298	54	18.1	1.4	35.0	4.5
Southfield/Lathrup	370	41	11.1	300	49	16.3	277	44	15.9	269	34	12.6	292	37	12.7	-21.1	-9.8	1.6
Subtotal - Public	2,308	411	17.8	2,141	430	20.1	2,158	464	21.5	2,198	417	19.0	2,141	424	19.8	-7.2	3.2	2.0
<b>Royal Oak/Southfield - Private</b>																		
Akiva Hebrew Day	--	--	--	--	--	--	--	--	--	--	--	--	10	0	0.0	--	--	--
Bishop Foley	203	21	10.3	197	10	5.1	163	9	5.5	174	13	7.5	155	14	9.0	-23.6	-33.3	-1.3
SAA Beth Jacob	20	0	0.0	18	0	0.0	18	1	5.6	20	0	0.0	21	0	0.0	5.0	--	0.0
Shrine	74	2	2.7	62	6	9.7	53	3	5.7	60	6	10.0	46	0	0.0	-37.8	-100.0	-2.7
Southfield Christian	72	8	11.1	72	3	4.2	73	7	9.6	5	5	100.0	75	1	1.3	4.2	-87.5	-9.8
Temple Christ. Academy	8	1	12.5	4	0	0.0	6	0	0.0	7	2	28.6	6	1	16.7	-25.0	0.0	4.2
Yeshivath Gedoloh	10	0.0	0.0	19	0	0.0	24	3	12.5	--	--	--	15	0	0.0	50.0	--	0.0
Subtotal - Private	387	32	8.3	372	19	5.1	337	23	6.8	266	26	9.8	328	16	4.9	-15.2	-50.0	-3.4
<b>Total - Royal Oak/Southfield</b>	<b>2,695</b>	<b>443</b>	<b>16.4</b>	<b>2,513</b>	<b>449</b>	<b>17.9</b>	<b>2,495</b>	<b>487</b>	<b>19.5</b>	<b>2,464</b>	<b>443</b>	<b>18.0</b>	<b>2,469</b>	<b>440</b>	<b>17.8</b>	<b>-8.4</b>	<b>-0.7</b>	<b>1.4</b>

**Oakland Community College**  
**Fall 1997 High School Penetration Report by Recruiting Region**  
**(1993-1997)**

High School	1993			1994			1995			1996			1997			Percent Change 5-Year		
	High School Grads	Entered OCC	Percent	High School Grads	Entered OCC	Percent	High School Grads	Entered OCC	Percent	High School Grads	Entered OCC	Percent	High School Grads	Entered OCC	Percent	High School Grads	Entered OCC	Absolute Percent
	<b>College-Wide</b>																	
Public	10,074	1,655	16.4	9,420	1,626	17.3	9,536	1,811	19.0	9,711	1,628	16.8	9,812	1,651	16.8	-2.6	-0.2	0.4
Private	1,458	102	7.0	1,429	99	6.9	1,439	82	5.7	1,419	85	6.0	1,543	52	3.4	5.8	-49.0	-3.6
<b>Grand total</b>	11,532	1,757	15.2	10,849	1,725	15.9	10,975	1,893	17.2	11,130	1,713	15.4	11,355	1,703	15.0	-1.5	-3.1	-0.2

**Oakland Community College**  
**Fall 1997 High School Penetration Report (Alphabetize Listing)**  
**(1993-1997)**

High School	1993			1994			1995			1996			1997			Percent Change 5-Year		
	High School Grads	Entered OCC	Percent	High School Grads	Entered OCC	Percent	High School Grads	Entered OCC	Percent	High School Grads	Entered OCC	Percent	High School Grads	Entered OCC	Percent	High School Grads	Entered OCC	Absolute Percent
	<b>Public</b>																	
Adams	425	57	13.4	423	56	13.2	430	73	17.0	409	48	11.7	412	62	15.0	-3.1	8.8	1.6
Andover	208	15	7.2	218	20	9.2	201	15	7.5	197	11	5.6	226	3	1.3	8.7	-80.0	-5.9
Athens	412	66	16.0	382	65	17.0	371	66	17.8	360	60	16.7	315	48	15.2	-23.5	-27.3	-0.8
Avondale	165	39	23.6	133	33	24.8	151	40	26.5	168	33	19.6	162	32	19.8	-1.8	-17.9	-3.9
Berkley	250	38	15.2	222	48	21.6	250	65	26.0	230	34	14.8	258	43	16.7	3.2	13.2	1.5
Brandon	195	29	14.9	161	26	16.1	165	31	18.8	161	31	19.3	187	33	17.6	-4.1	13.8	2.8
Clarkston	405	77	19.0	338	74	21.9	352	71	20.2	401	90	22.4	340	70	20.6	-16.0	-9.1	1.6
Clawson	115	30	26.1	113	37	32.7	115	17	14.8	111	23	20.7	99	18	18.2	-13.9	-40.0	-7.9
Dondero	183	54	29.5	186	40	21.5	175	48	27.4	175	45	25.7	175	49	28.0	-4.4	-9.3	-1.5
Farmington	235	42	17.9	228	35	15.4	236	50	21.2	270	35	13.0	257	46	17.9	9.4	9.5	0.0
Ferndale	192	27	14.1	190	31	16.3	205	37	18.0	214	50	23.4	189	44	23.3	-1.6	63.0	9.2
Groves	252	18	7.1	217	23	10.6	230	36	15.7	235	34	14.5	257	24	9.3	2.0	33.3	2.2
Harrison	229	39	17.0	203	45	22.2	264	44	16.7	229	42	18.3	213	32	15.0	-7.0	-17.9	-2.0
Hazel Park	221	38	17.2	200	35	17.5	195	45	23.1	237	35	14.8	171	32	18.7	-22.6	-15.8	1.5
Holly	177	21	11.9	205	21	10.2	192	22	11.5	201	33	16.4	209	21	10.0	18.1	0.0	-1.8
Kimball	252	74	29.4	270	69	25.6	322	56	17.4	298	82	27.5	280	67	23.9	11.1	-9.5	-5.4
Lahser	247	21	8.5	210	20	9.5	210	11	5.2	263	28	10.6	250	20	8.0	1.2	-4.8	-0.5
Lake Orion	282	55	19.5	316	42	13.3	288	61	21.2	272	54	19.9	297	58	19.5	5.3	5.5	0.0
Lakeland	253	54	21.3	212	46	21.7	235	55	23.4	245	50	20.4	263	53	20.2	4.0	-1.9	-1.2
Lamphere	129	29	22.5	125	27	21.6	135	30	22.2	145	25	17.2	135	38	28.1	4.7	31.0	5.7
Madison	133	22	16.5	103	21	20.4	93	29	31.2	89	21	23.6	88	20	22.7	-33.8	-9.1	6.2
Milford	273	70	25.6	333	67	20.1	297	53	17.8	341	50	14.7	328	77	23.5	20.1	10.0	-2.2
North Farmington	277	36	13.0	292	40	13.7	255	44	17.3	242	40	16.5	260	48	18.5	-6.1	33.3	5.5
Novi	261	46	17.6	244	40	16.4	294	58	19.7	285	32	11.2	276	38	13.8	5.7	-17.4	-3.9
Oak Park	169	18	10.7	174	23	13.2	154	39	25.3	143	19	13.3	156	22	14.1	-7.7	22.2	3.5
Oxford	169	34	20.1	164	32	19.5	170	39	22.9	180	41	22.8	180	40	22.2	6.5	17.6	2.1
Pontiac Central	292	31	10.6	185	44	23.8	193	41	21.2	171	14	8.2	197	21	10.7	-32.5	-32.3	0.0
Pontiac Northern	272	25	9.2	227	14	6.2	227	14	6.2	182	35	19.2	157	13	8.3	-42.3	-48.0	-0.9
Rochester	373	62	16.6	392	60	15.3	395	81	20.5	401	62	15.5	421	80	19.0	12.9	29.0	2.4
Seaholm High School	299	23	7.7	230	24	10.4	269	26	9.7	267	17	6.4	248	18	7.3	-17.1	-21.7	-0.4
South Lyon	221	37	16.7	219	34	15.5	240	21	8.8	243	15	6.2	298	18	6.0	34.8	-51.4	-10.7
Southfield	294	40	13.6	258	50	19.4	237	54	22.8	287	49	17.1	298	54	18.1	1.4	35.0	4.5
Southfield/Lathrup	370	41	11.1	300	49	16.3	277	44	15.9	269	34	12.6	292	37	12.7	-21.1	-9.8	1.6
Troy	425	58	13.6	425	48	11.3	399	74	18.5	435	63	14.5	458	65	14.2	7.8	12.1	0.5

**Oakland Community College**  
**Fall 1997 High School Penetration Report (Alphabetize Listing)**  
**(1993-1997)**

High School	1993			1994			1995			1996			1997			Percent Change 5-Year		
	High School Grads	Entered OCC	Percent	High School Grads	Entered OCC	Percent	High School Grads	Entered OCC	Percent	High School Grads	Entered OCC	Percent	High School Grads	Entered OCC	Percent	High School Grads	Entered OCC	Absolute Percent
Walled Lake Central	307	68	22.1	256	62	24.2	257	66	25.7	256	79	30.9	326	77	23.6	6.2	13.2	1.5
Walled Lake Western	269	53	19.7	248	57	23.0	252	70	27.8	265	57	21.5	335	63	18.8	24.5	18.9	-0.9
Waterford Kettering	260	63	24.2	253	59	23.3	237	71	30.0	234	45	19.2	209	58	27.8	-19.6	-7.9	3.5
Waterford Mott	246	55	22.4	254	73	28.7	250	63	25.2	253	70	27.7	243	64	26.3	-1.2	16.4	4.0
West Bloomfield	337	50	14.8	311	36	11.6	318	51	16.0	347	42	12.1	347	45	13.0	3.0	-10.0	-1.9
<b>Private</b>																		
Academy of Sacred Heart	24	1	4.2	26	0	0.0	21	0	0	22	1	4.5	28	0	0.0	16.7	-100.0	-4.2
Akiva Hebrew Day	--	--	--	--	--	--	--	--	--	--	--	--	10	0	0.0	--	--	--
Bethany Christian	26	2	7.7	16	0	0.0	23	1	4.3	16	1	6.3	26	0	0.0	0.0	-100.0	-7.7
Bishop Foley	203	21	10.3	197	10	5.1	163	9	5.5	174	13	7.5	155	14	9.0	-23.6	-33.3	-1.3
Brother Rice	127	9	7.1	135	14	10.4	135	6	4.4	147	3	2.0	161	4	2.5	26.8	-55.6	-4.6
Cranbrook Kingswood	181	2	1.1	151	1	0.7	182	3	1.6	178	1	0.6	177	0	0.0	-2.2	-100.0	-1.1
Detroit Country Day	118	0	0.0	117	0	0.0	112	0	0.0	140	0	0.0	154	0	0.0	30.5	--	0.0
Eton Academy	16	0	0.0	13	0	0.0	12	0	0.0	13	0	0.0	10	0	0.0	-37.5	--	0.0
Greater Life Academy	5	0	0.0	5	3	60.0	10	0	0.0	7	3	42.9	5	2	40.0	0.0	--	40.0
Indianwood Christian	1	0	0.0	3	0	0.0	1	0	0.0	6	1	16.7	0	0	0.0	-100.0	--	0.0
Lutheran NW High School	60	10	16.7	54	6	11.1	49	4	8.2	59	3	5.1	56	4	7.1	-6.7	-60.0	-9.5
Marian	98	13	13.3	96	5	5.2	109	7	6.4	109	1	0.9	128	1	0.8	30.6	-92.3	-12.5
Mercy	196	6	3.1	190	12	6.3	196	8	4.1	192	2	1.0	176	2	1.1	-10.2	-66.7	-1.9
Notre Dame Prep.(Pontiac/Oakland)	20	3	15.0	36	14	38.9	22	5	22.7	30	5	16.7	44	3	6.8	120.0	0.0	-8.2
Oakland Christian School	53	11	20.8	40	4	10.0	52	11	21.2	31	12	38.7	53	8	15.1	0.0	-27.3	-5.7
Our Lady of the Lakes	36	6	16.7	49	7	14.3	48	10	20.8	58	11	19.0	58	3	5.2	61.1	-50.0	-11.5
Oxford Christian Academy	5	2	40.0	10	1	10.0	6	1	16.7	11	3	27.3	6	3	50.0	20.0	50.0	10.0
Roch Hls Christ. School	16	0	0.0	14	1	7.1	15	1	6.7	10	2	20.0	10	0	0.0	-37.5	--	0.0
Roeper City & Country	23	1	4.3	38	0	0.0	44	1	2.3	40	0	0.0	35	1	2.9	52.2	0.0	-1.5
SAA Beth Jacob	20	0	0.0	18	0	0.0	18	1	5.6	20	0	0.0	21	0	0.0	5.0	--	0.0
Shrine	74	2	2.7	62	6	9.7	53	3	5.7	60	6	10.0	46	0	0.0	-37.8	-100.0	-2.7
Southfield Christian	72	8	11.1	72	3	4.2	73	7	9.6	5	5	100.0	75	1	1.3	4.2	-87.5	-9.8
Springfld Christ. Acad.	27	3	11.1	15	6	40.0	12	0	0.0	21	6	28.6	14	0	0.0	-48.1	-100.0	-11.1
St. Mary Prep.	39	1	2.6	49	6	12.2	46	1	2.2	58	4	6.9	67	5	7.5	71.8	400.0	4.9
Temple Christ. Academy	8	1	12.5	4	0	0.0	6	0	0.0	7	2	28.6	6	1	16.7	-25.0	0.0	4.2
West Highland Christian	0	0	--	0	0	--	7	0	0.0	5	0	0.0	7	0	0.0	--	--	--
Yeshivath Gedolah	10	0	0.0	19	0	0.0	24	3	12.5	--	--	--	15	0	0.0	50.0	--	0.0

**Oakland Community College  
Fall 1997 High School Penetration Report (Alphabetize Listing)  
(1993-1997)**

	1993			1994			1995			1996			1997			Percent Change 5-Year		
	High School Grads	Entered OCC	Percent	High School Grads	Entered OCC	Percent	High School Grads	Entered OCC	Percent	High School Grads	Entered OCC	Percent	High School Grads	Entered OCC	Percent	High School Grads	Entered OCC	Absolute Percent
<b>High School</b>																		
<b>College-Wide</b>																		
Public	10,074	1,655	16.4	9,420	1,626	17.3	9,536	1,811	19.0	9,711	3,624	37.3	9,812	3,648	37.2	-2.6	120.4	20.8
Private	1,458	102	7.0	1,429	99	6.9	1,439	82	5.7	1,419	85	6.0	1,543	52	3.4	5.8	-49.0	-3.6
<b>Grand total</b>	11,532	1,757	15.2	10,849	1,725	15.9	10,975	1,893	17.2	11,130	3,709	33.3	11,355	3,700	32.6	-1.5	110.6	17.3

# Oakland Community College

## Fall 1997 High School Penetration Report

### Greatest Increase in Public High School Graduates Five Year Percent Change

High School	1993 High School Grads	1997 High School Grads	Percent Change
South Lyon (O.R.)	221	298	34.8
Walled Lake Western (H.L.)	269	335	24.5
Milford (H.L.)	273	328	20.1
Holly (H.L.)	177	209	18.1
Kimball (R.O./SF)	252	280	11.1

### Greatest Decrease in Public High School Graduates Five Year Percent Change

High School	1993 High School Grads	1997 High School Grads	Percent Change
Pontiac Northern (A.H.)	272	157	-42.3
Madison (R.O./SF)	133	88	-33.8
Pontiac Central (A.H.)	292	197	-32.5
Athens (A.H.)	412	315	-23.5
Hazel Park (R.O./SF)	221	171	-22.6

### Greatest Increase of Students from Public Schools that Entered OCC Five Year Percent Change

High School	1993 Entered OCC	1997 Entered OCC	Percent Change
Ferndale (R.O./SF)	27	44	63.0
Groves (O.R.)	18	24	33.3
North Farmington (O.R.)	36	48	33.3
Lamphere (R.O./SF)	29	38	31.0
Rochester (A.H.)	62	80	29.0

### Greatest Decrease of Students from Public Schools that Entered OCC Five Year Percent Change

High School	1993 Entered OCC	1997 Entered OCC	Percent Change
Andover (O.R.)	15	3	-80.0
South Lyon (O.R.)	37	18	-51.4
Pontiac Northern (A.H.)	25	13	-48.0
Clawson (R.O./SF)	30	18	-40.0
Pontiac Central (A.H.)	31	21	-32.3

### Greatest Increase in Penetration Rate from Public Schools Five Year Percent Change

High School	1993 Penetration Rate	1997 Penetration Rate	Absolute Percent
Ferndale (R.O./SF)	14.1	23.3	9.2
Madison (R.O./SF)	16.5	22.7	6.2
Lamphere (R.O./SF)	22.5	28.1	5.7
North Farmington (O.R.)	13.0	18.5	5.5
Waterford Mott (H.L.)	22.4	26.3	4.0

### Greatest Decrease in Penetration Rate from Public Schools Five Year Percent Change

High School	1993 Penetration Rate	1997 Penetration Rate	Absolute Percent
South Lyon (O.R.)	16.7	6.0	-10.7
Clawson (R.O./SF)	26.1	18.2	-7.9
Andover (O.R.)	7.2	1.3	-5.9
Kimball (R.O./SF)	29.4	23.9	-5.4
Avondale (A.H.)	23.6	19.8	-3.9



**Oakland Community College  
Fall 1997 High School Penetration Report  
Projected High School Graduates  
(1998-2002)**

**Projections Formula**

1. Find the *rate of growth* over a three year period

A) Divide the most current year by the previous year

Ex: 1997 HSG, 11,355 / 1996 HSG, 11,130 = 1.0202

**Hold this number**

B) Divide the middle year by the last year

Ex: 1996 HSG, 11,130 / 1995 HSG, 10,975 = 1.0141

**Hold this number**

C) Add the two totals from above and divide by two

Ex:  $1.0202 + 1.0141 = 2.0343 / 2 = 1.0172$

1.0172 is the *rate of growth*

2. Project the *number of graduates* for one to five years (projecting over five years is unstable)

A) Multiple the number of graduates for the most current year by the *rate of growth*

Ex: 1997 HSG, 11,355 \* 1.0172 = 11,550

**11,550 is the number of Projected High School Graduates in 1998**

3. To find the projected number of HSG for 1999

A) Follow Rule #2

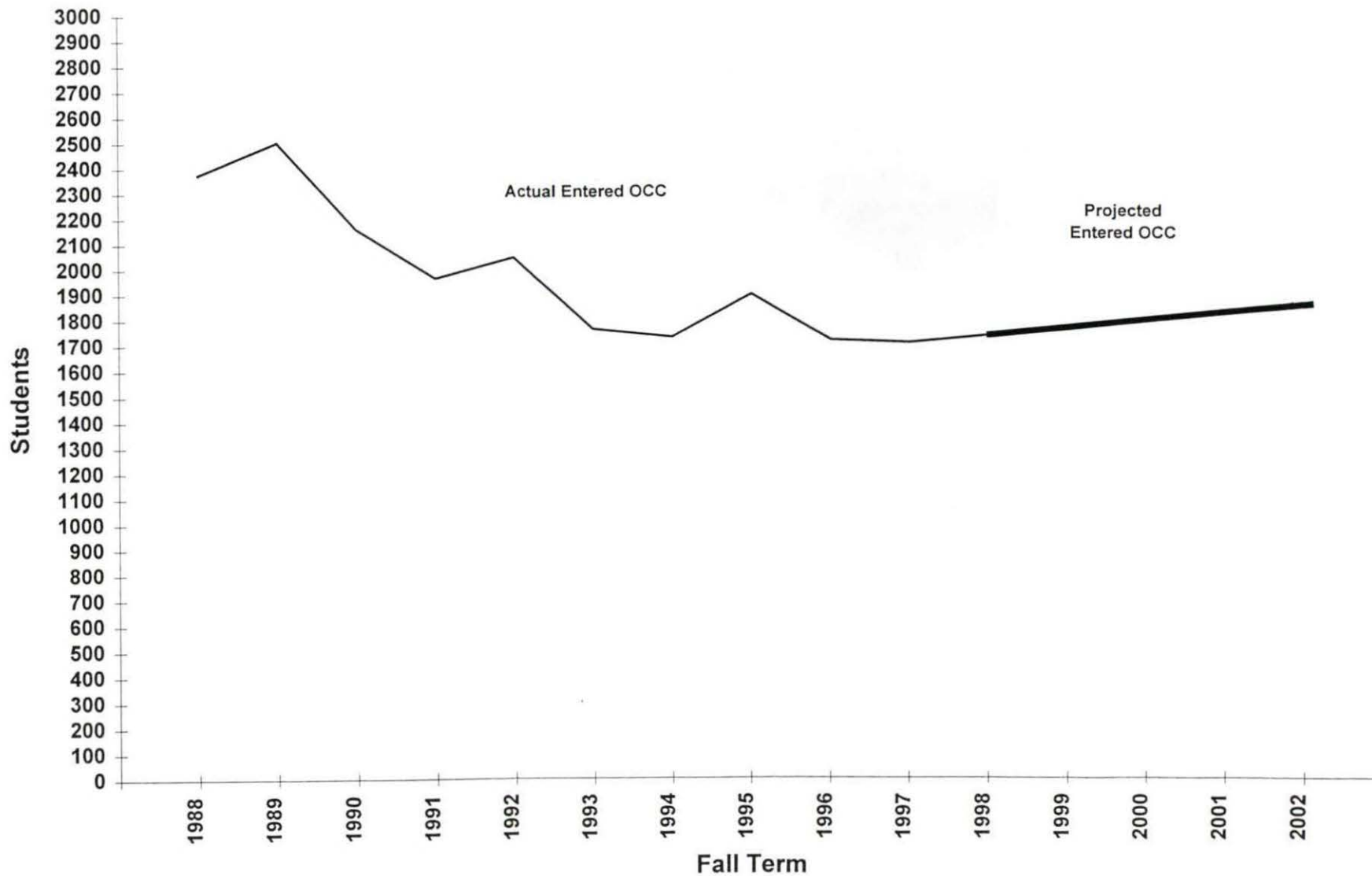
Ex: 1998 PHSG, 11550 \* 1.0172 = 11,749

**11,749 is the number of Projected High School Graduates in 1999**

Oakland Community College  
 Fall 1997 High School Penetration Report  
 Projected High School Graduates  
 (1998-2002)

	Projected High School Grads	Projected Entering OCC	Projected Penetration Rate
1997 (actual)	11,355	1,703	15.0
1998	11,550	1,732	15.0
1999	11,749	1,762	15.0
2000	11,951	1,792	15.0
2001	12,157	1,823	15.0
2002	12,368	1,854	15.0
Five Year % Change	7.1	7.0	0.0

Oakland Community College  
Fall 1997 High School Penetration Report  
Trend in High School Graduates Entering OCC and Projected Graduates Entering OCC  
(1988-2002)



Oakland Community College  
Fall 1997 High School Penetration Report  
Trend in High School Graduates and Projected Graduates  
(1988-2002)



**Oakland Community College  
Fall 1997 High School Penetration Report  
Projected High School Graduates  
(1998-2002)**

**Projections Formula**

1. Find the *rate of growth* over a three year period

A) Divide the most current year by the previous year

Ex: 1997 HSG, 11,355 / 1996 HSG, 11,130 = 1.0202

**Hold this number**

B) Divide the middle year by the last year

Ex: 1996 HSG, 11,130 / 1995 HSG, 10,975 = 1.0141

**Hold this number**

C) Add the two totals from above and divide by two

Ex:  $1.0202 + 1.0141 = 2.0343 / 2 = 1.0172$

1.0172 is the *rate of growth*

2. Project the *number of graduates* for one to five years (projecting over five years is unstable)

A) Multiple the number of graduates for the most current year by the *rate of growth*

Ex: 1997 HSG, 11,355 \* 1.0172 = 11,550

**11,550 is the number of Projected High School Graduates in 1998**

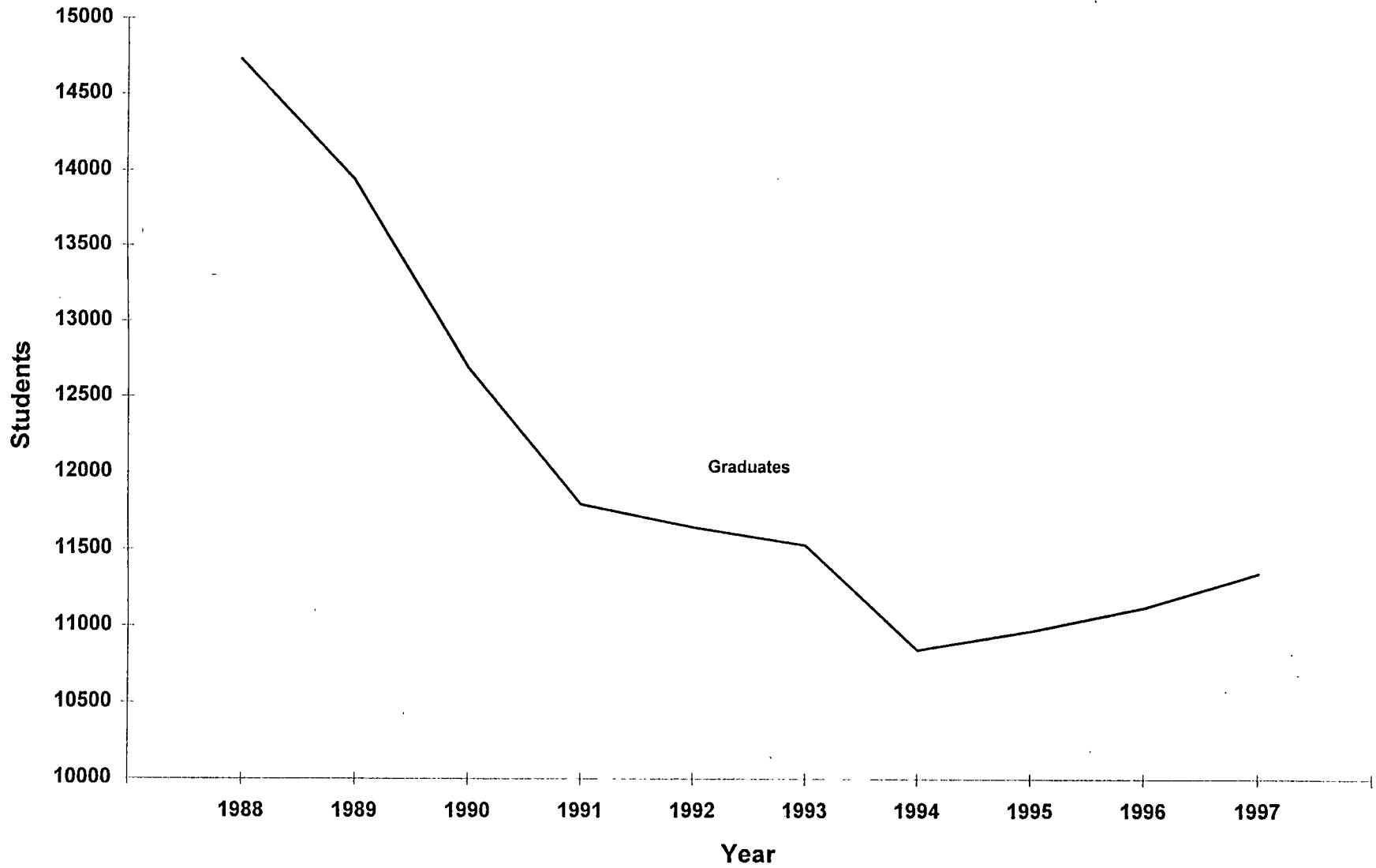
3. To find the projected number of HSG for 1999

A) Follow Rule #2

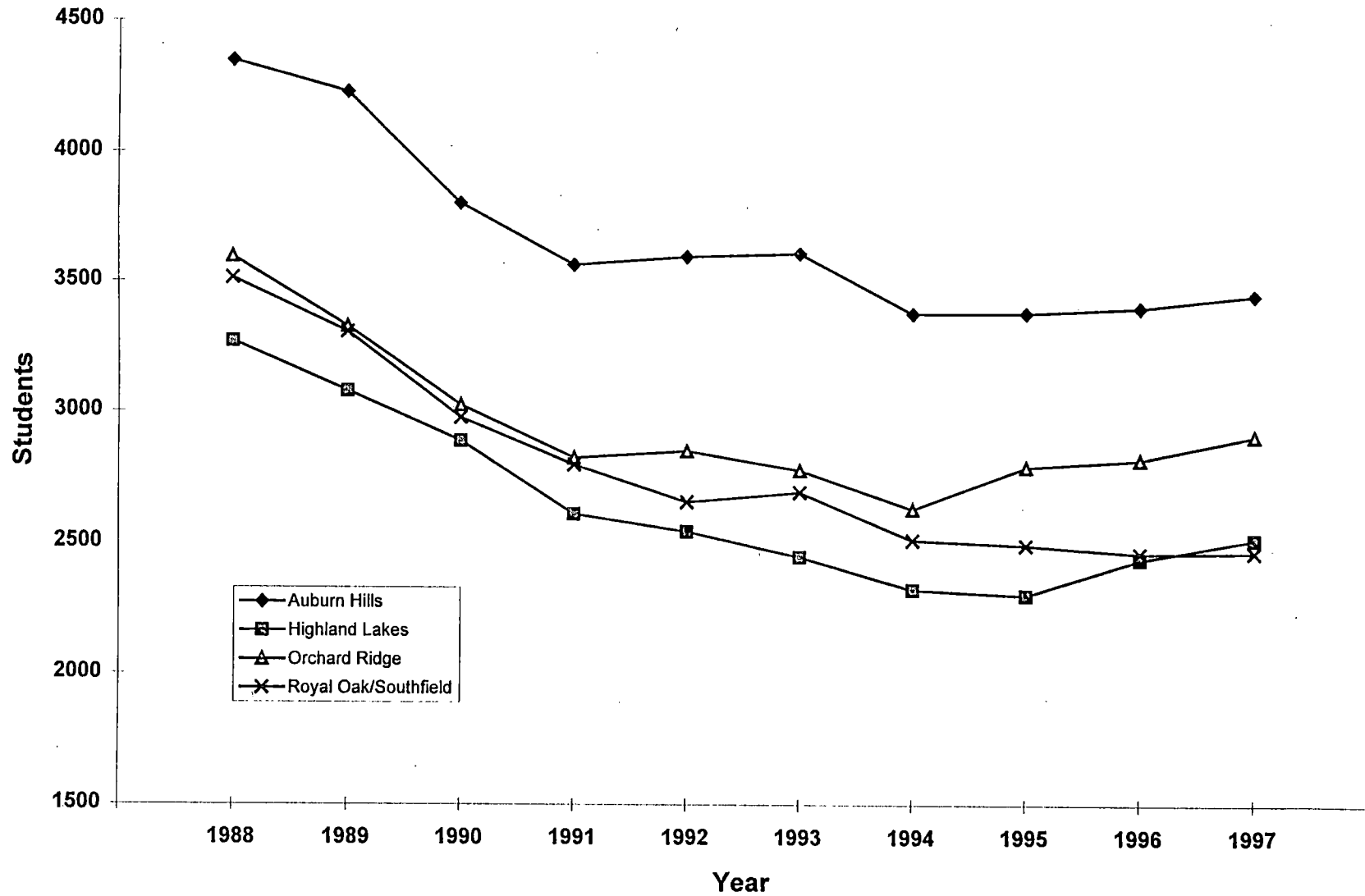
Ex: 1998 PHSG, 11550 \* 1.0172 = 11,749

**11,749 is the number of Projected High School Graduates in 1999**

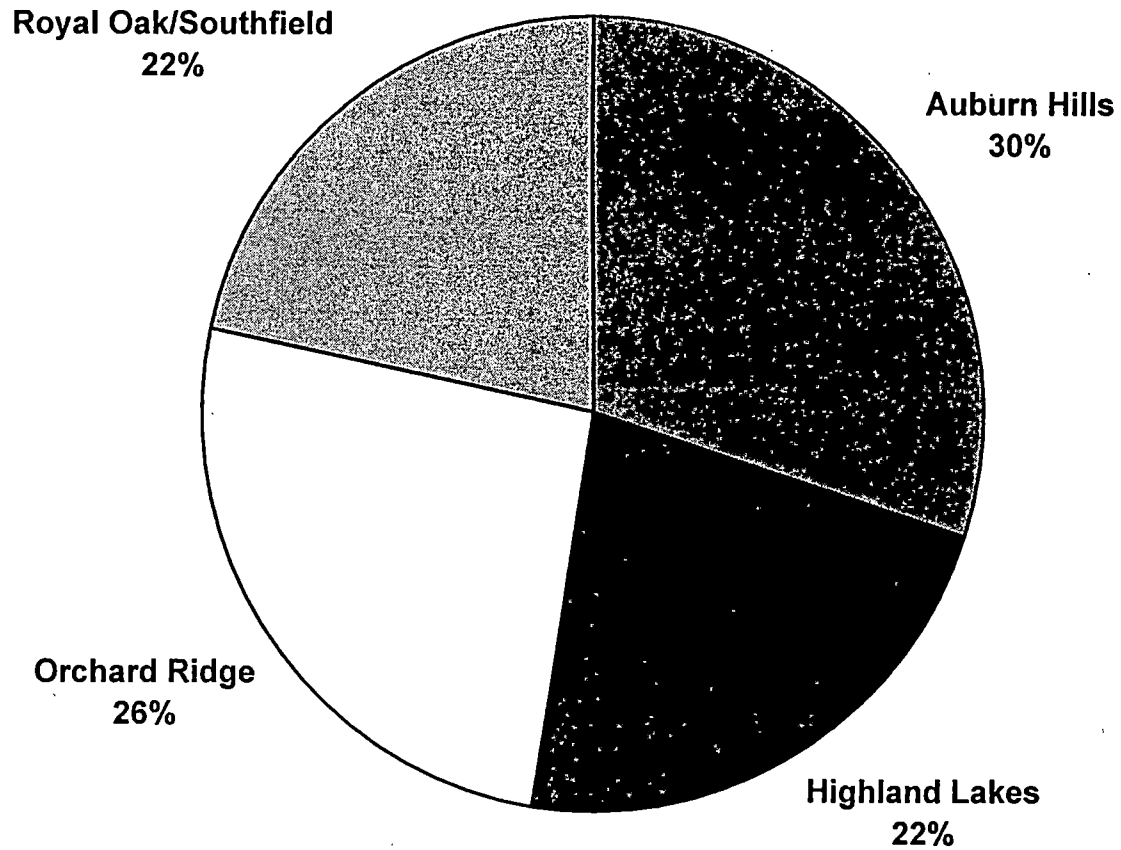
Oakland Community College  
Fall 1997 High School Penetration Report  
Trend in High School Graduates  
(1988-1997)



Oakland Community College  
Fall 1997 High School Penetration Report  
Trend in High School Graduates by Recruiting Region  
(1988-1997)

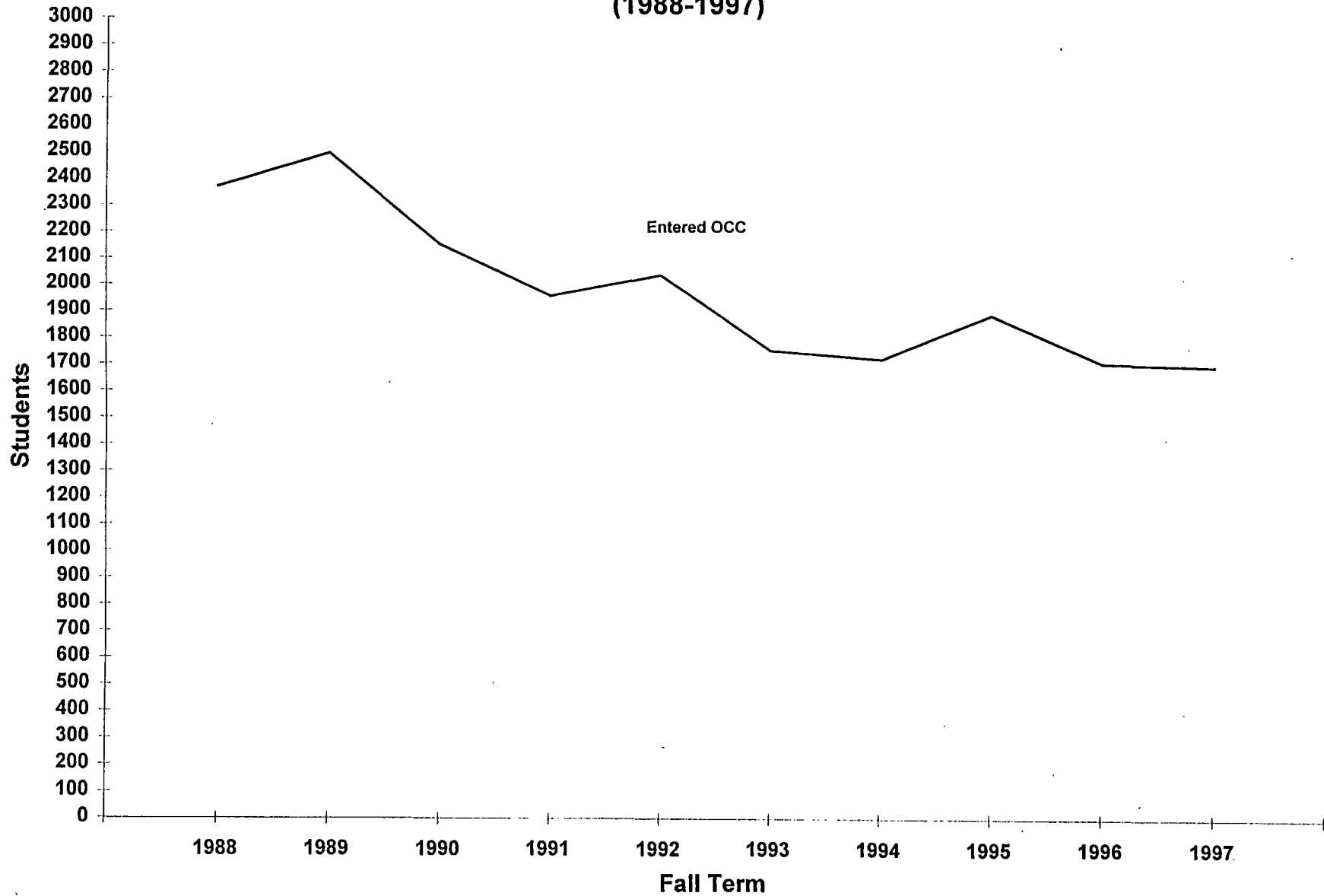


**Oakland Community College  
Fall 1997 High School Penetration Report  
Percent of High School Graduates by Recruiting Region  
1997**

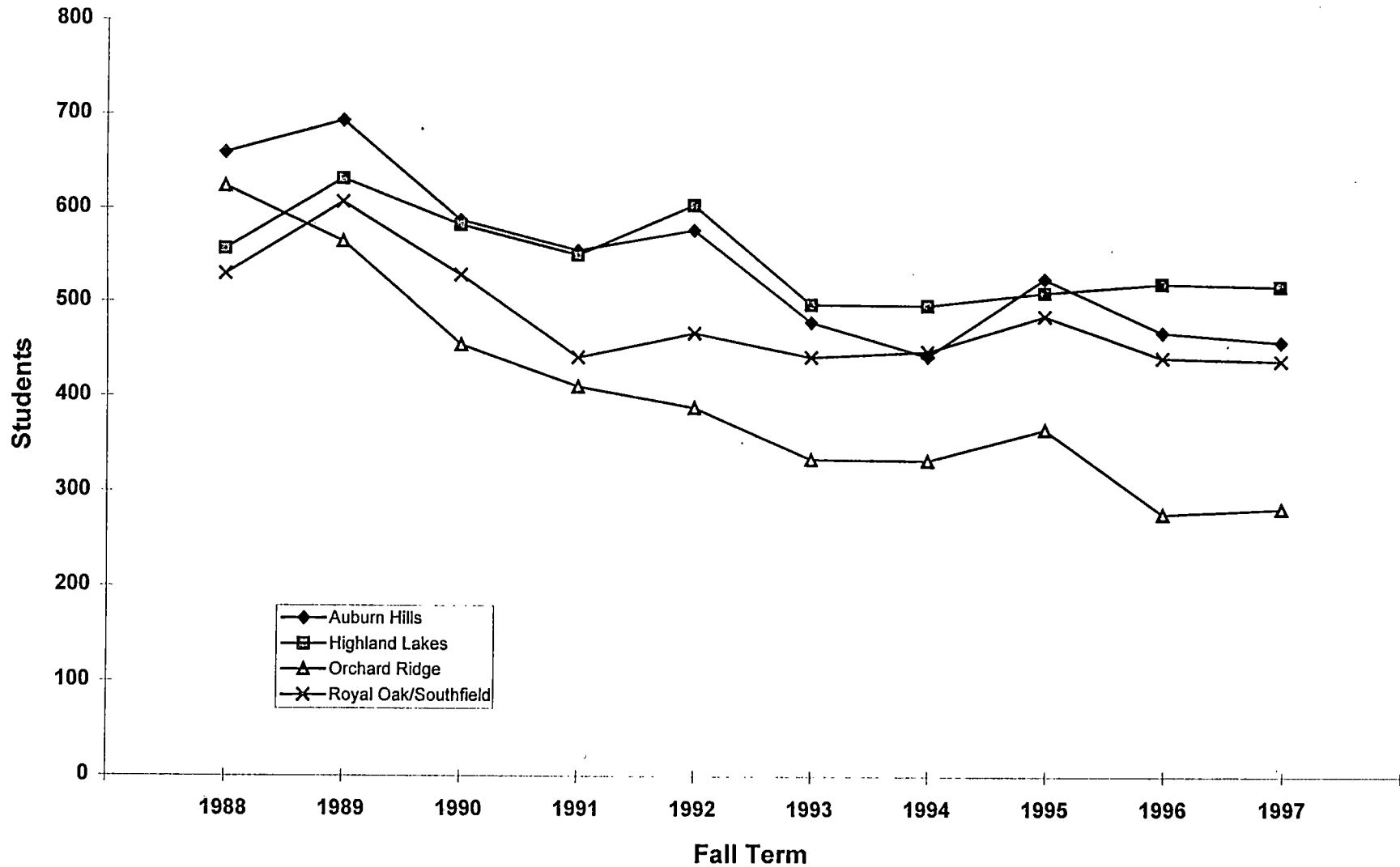




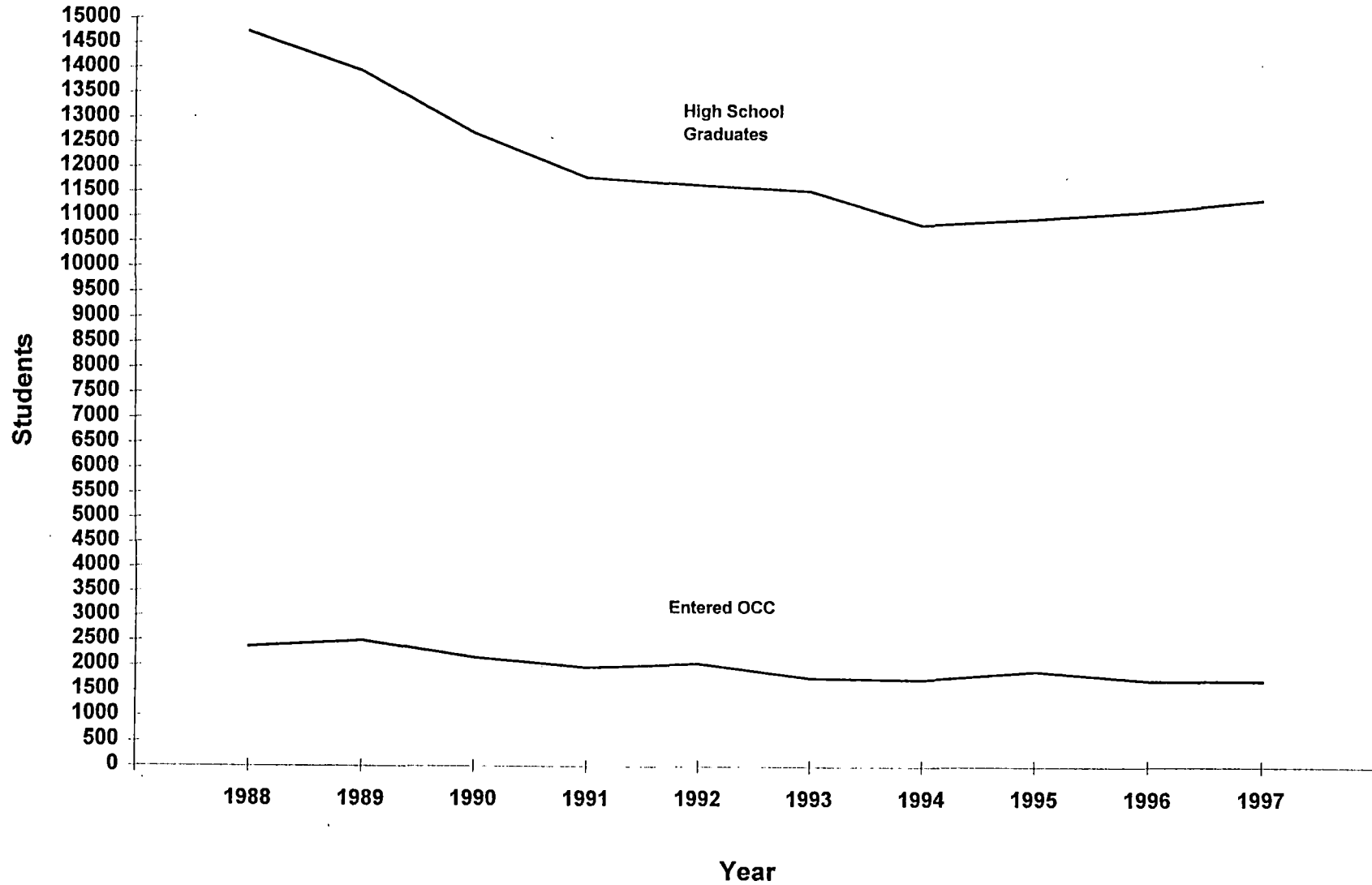
Oakland Community College  
Fall 1997 High School Penetration Report  
Trend in High School Graduates Entering OCC  
(1988-1997)



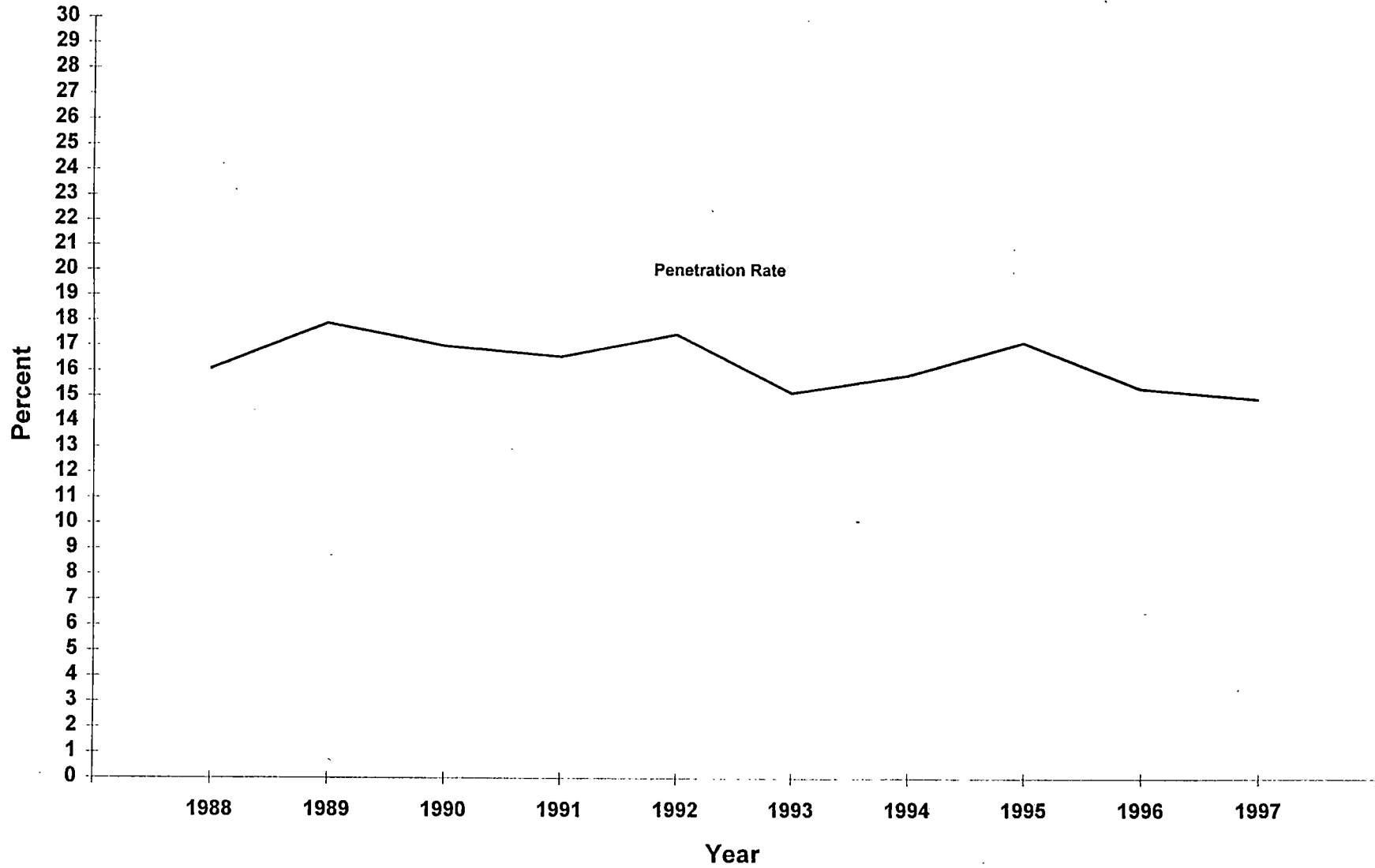
**Oakland Community College  
 Fall 1997 High School Penetration Report  
 Trend in High School Graduates Entering OCC by Recruiting Region  
 (1988-1997)**



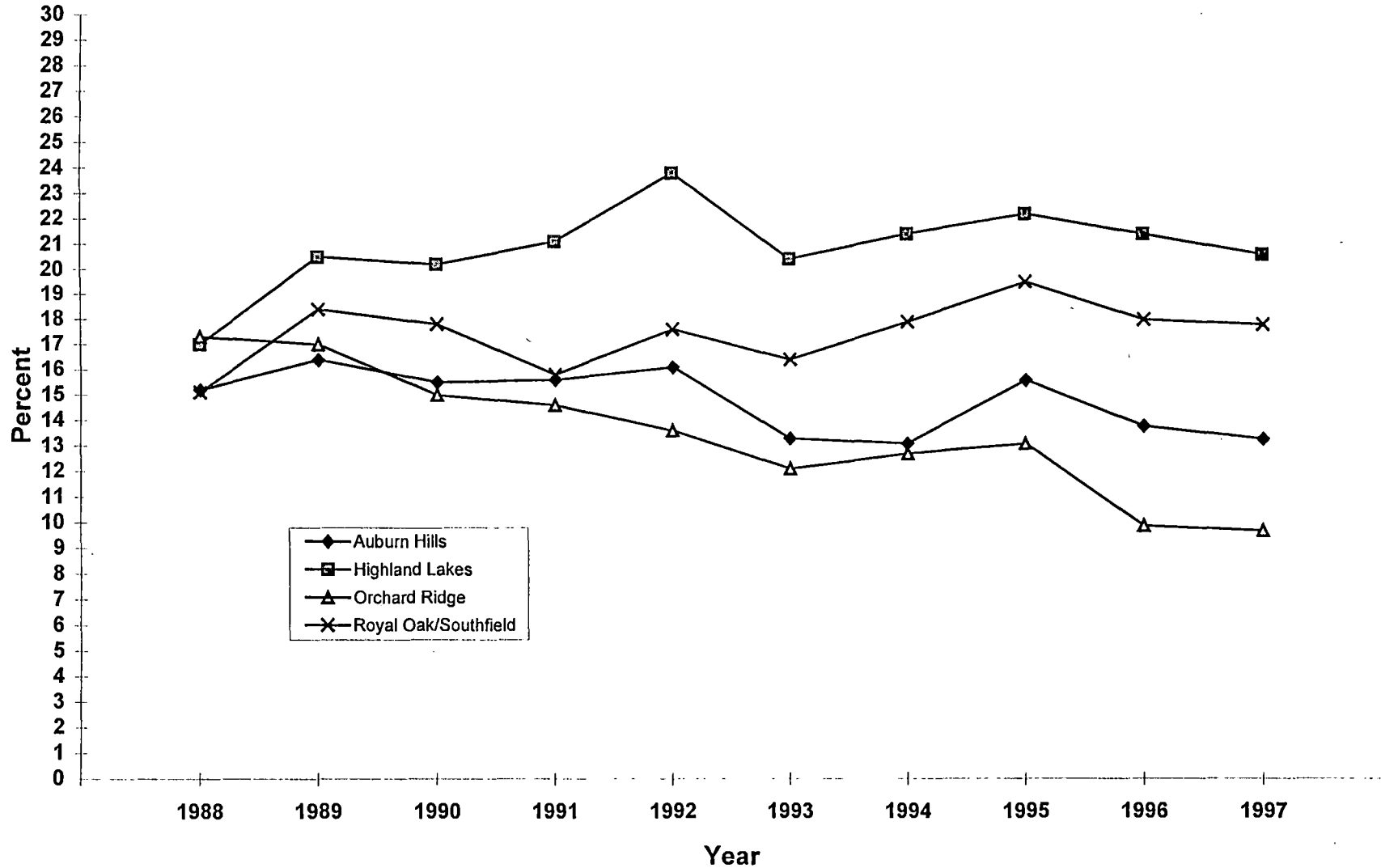
Oakland Community College  
Fall 1997 High School Penetration Report  
Comparison Between High School Graduates and Those Entering OCC  
(1988-1997)



Oakland Community College  
Fall 1997 High School Penetration Report  
Trend in Penetration Rate  
(1988-1997)



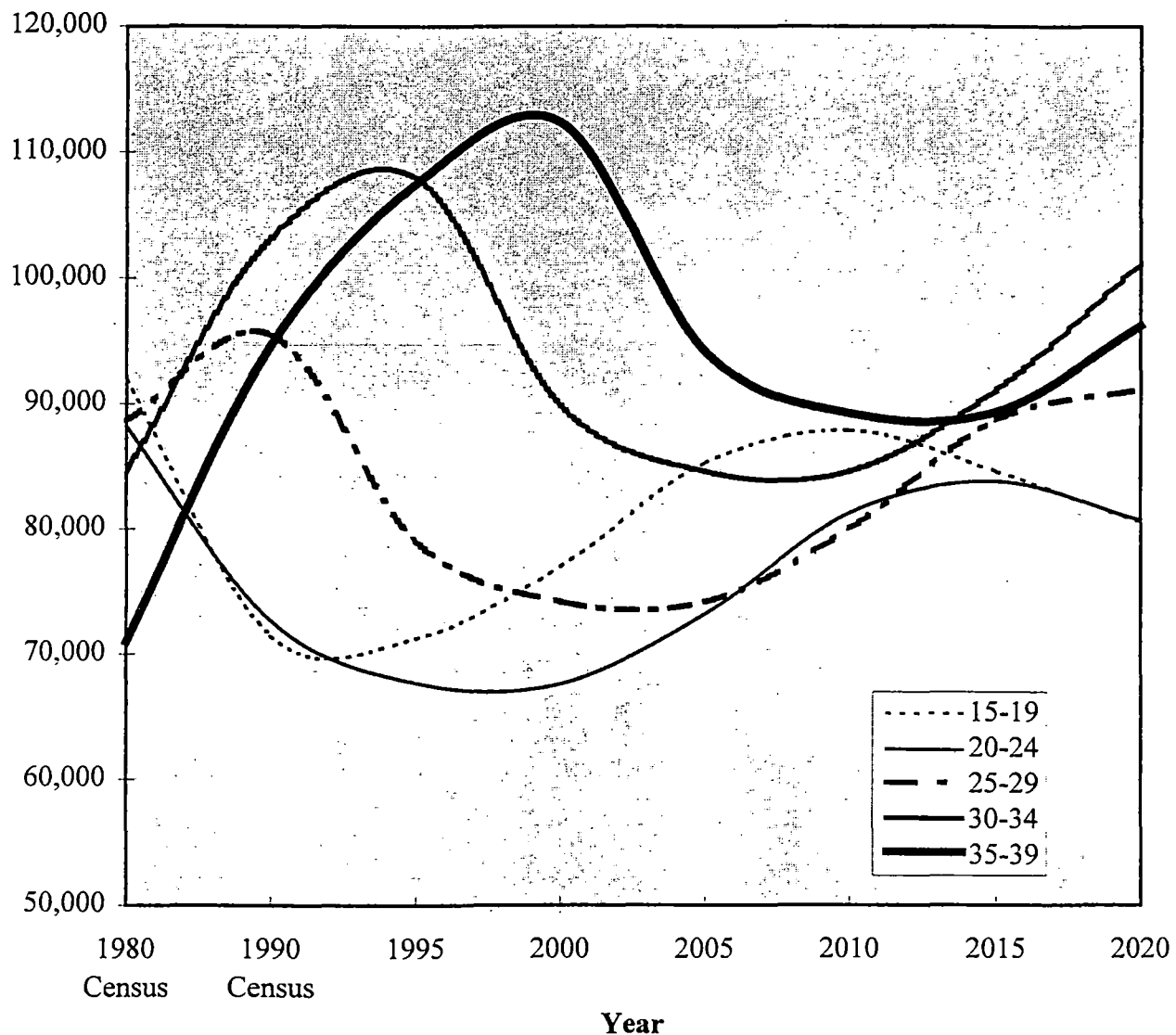
**Oakland Community College  
 Fall 1997 High School Penetration Report  
 Trend in Penetration Rate by Recruiting Region  
 (1988-1987)**



**Oakland Community College  
 Fall 1997 High School Penetration Report  
 Differences in Penetration Rate Between New and Old Report**

	<b>1992 Penetration Rate</b>	<b>1993 Penetration Rate</b>	<b>1994 Penetration Rate</b>	<b>1995 Penetration Rate</b>	<b>1996 Penetration Rate</b>	<b>Five Year % Change</b>
New Report	17.5	15.2	15.9	17.2	15.4	-2.1
Old Report	17.4	17.6	20.8	20.8	20.1	2.7

## Oakland County Population Projections to 2020



As the age groups 30 to 34 and 35 to 39 are projected to peak near 110,000 people by the year 2000, the traditional age groups served by OCC, 20 to 24 and 25 to 29, will reach lows of about 70,000 people shortly thereafter. It appears that there will be a leveling off of age group trends around 2010. After 2015, the younger groups will begin declining in numbers and the older groups will again increase.

Source: Office of the State Demographer, Michigan Department of Management & Budget, 1996

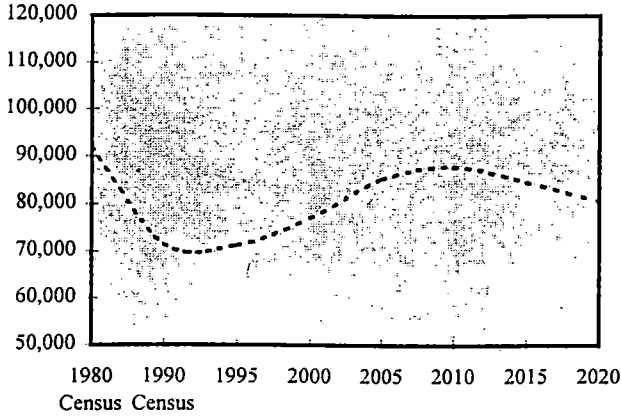
Prepared by: OCC, Office of Institutional Planning and Analysis (May 1997)

5/13/97

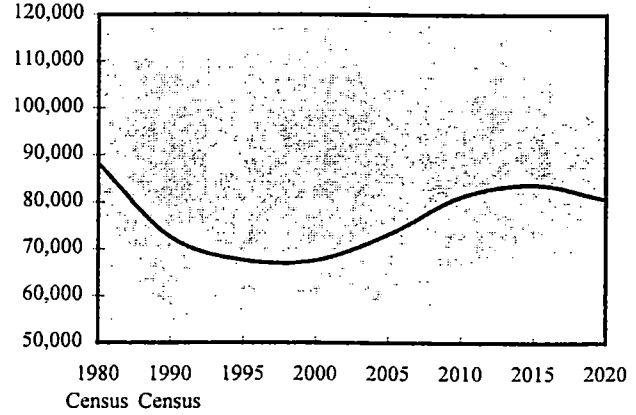
# Oakland County Population Projections to 2020

## By Age Group

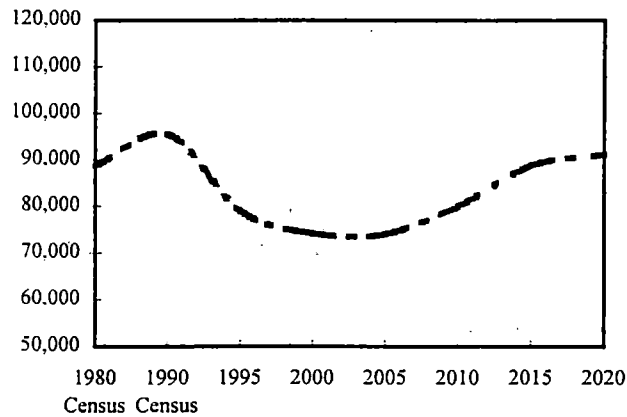
**15-19 Year Olds**



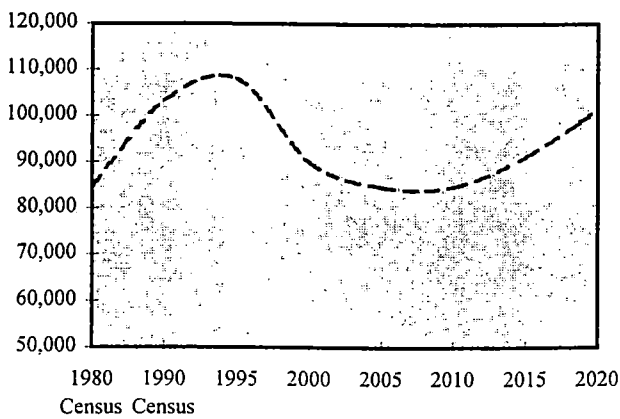
**20-24 Year Olds**



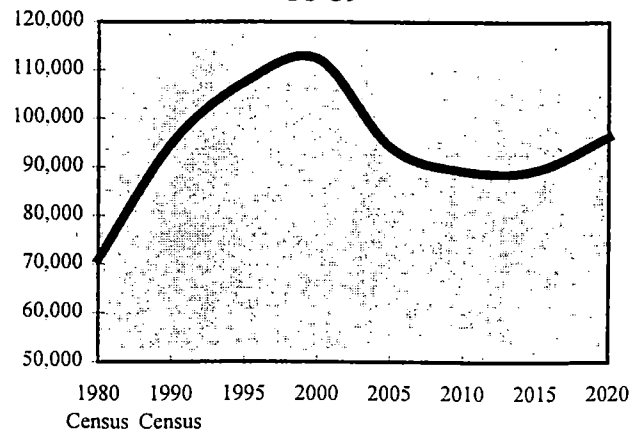
**25-29 Year Olds**



**30-34**



**35-39**



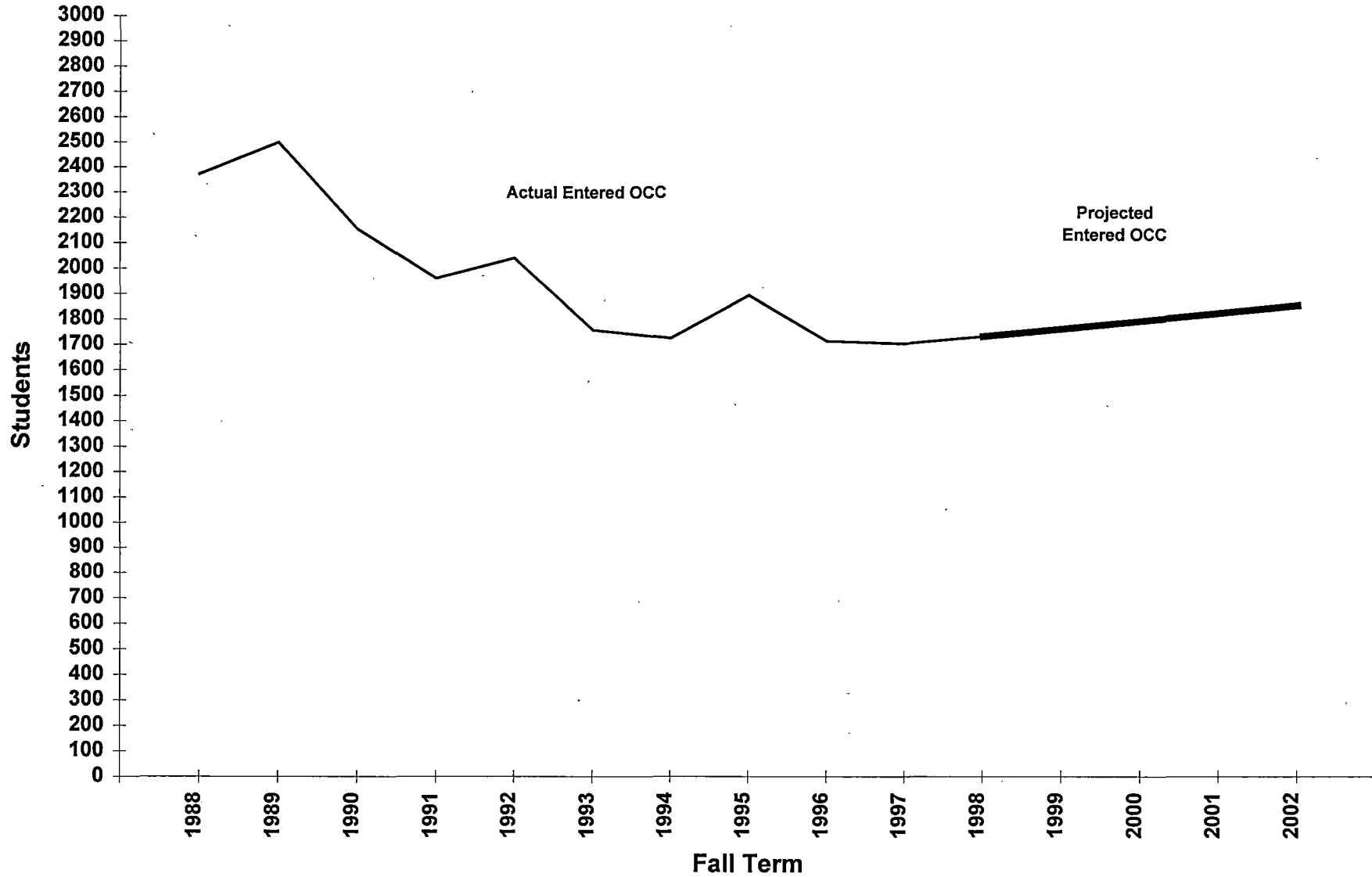
Source: Office of the State Demographer, Michigan Department of Management & Budget, 1996

Prepared by: OCC, Office of Institutional Planning and Analysis (May 1997)

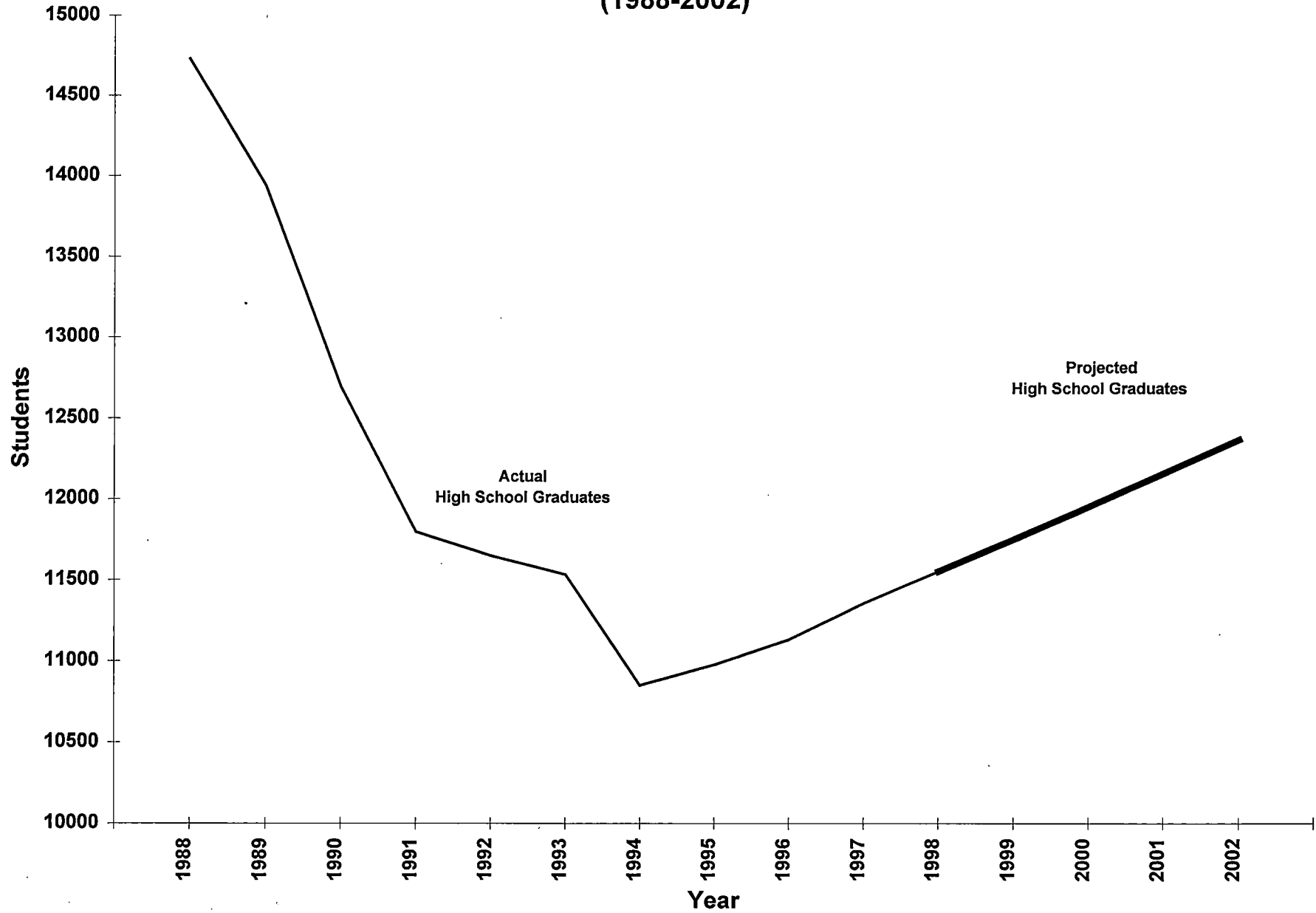
5/13/97



Oakland Community College  
Fall 1997 High School Penetration Report  
Trend in High School Graduates Entering OCC and Projected Graduates Entering OCC  
(1988-2002)



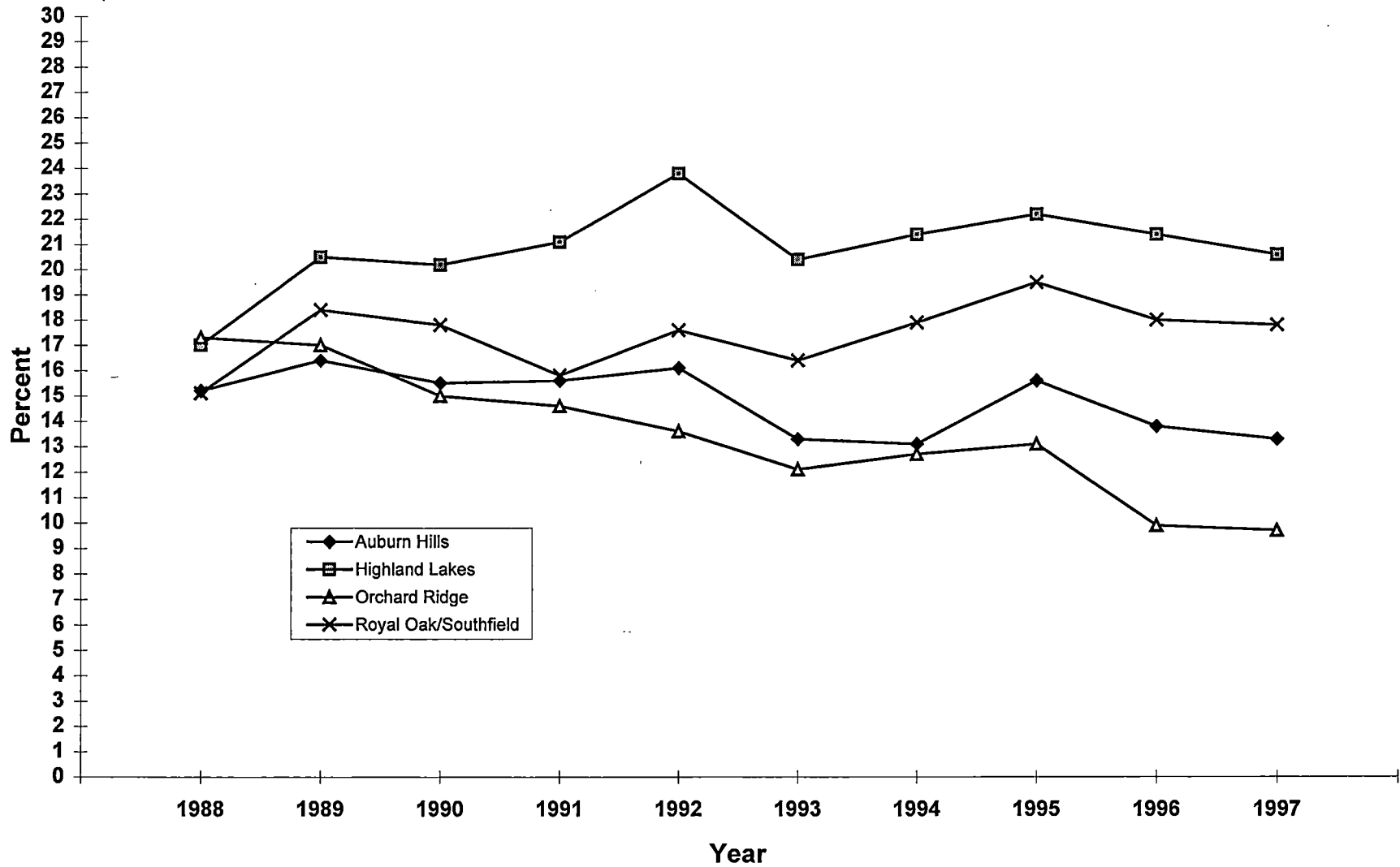
**Oakland Community College  
Fall 1997 High School Penetration Report  
Trend in High School Graduates and Projected Graduates  
(1988-2002)**



**Oakland Community College  
 Fall 1997 High School Penetration Report  
 Projected High School Graduates  
 (1998-2002)**

	Projected High School Grads	Projected Entering OCC	Projected Penetration Rate
<b>1997 (actual)</b>	11,355	1,703	15.0
<b>1998</b>	11,550	1,732	15.0
<b>1999</b>	11,749	1,762	15.0
<b>2000</b>	11,951	1,792	15.0
<b>2001</b>	12,157	1,823	15.0
<b>2002</b>	12,368	1,854	15.0
<b>Five Year % Change</b>	7.1	7.0	0.0

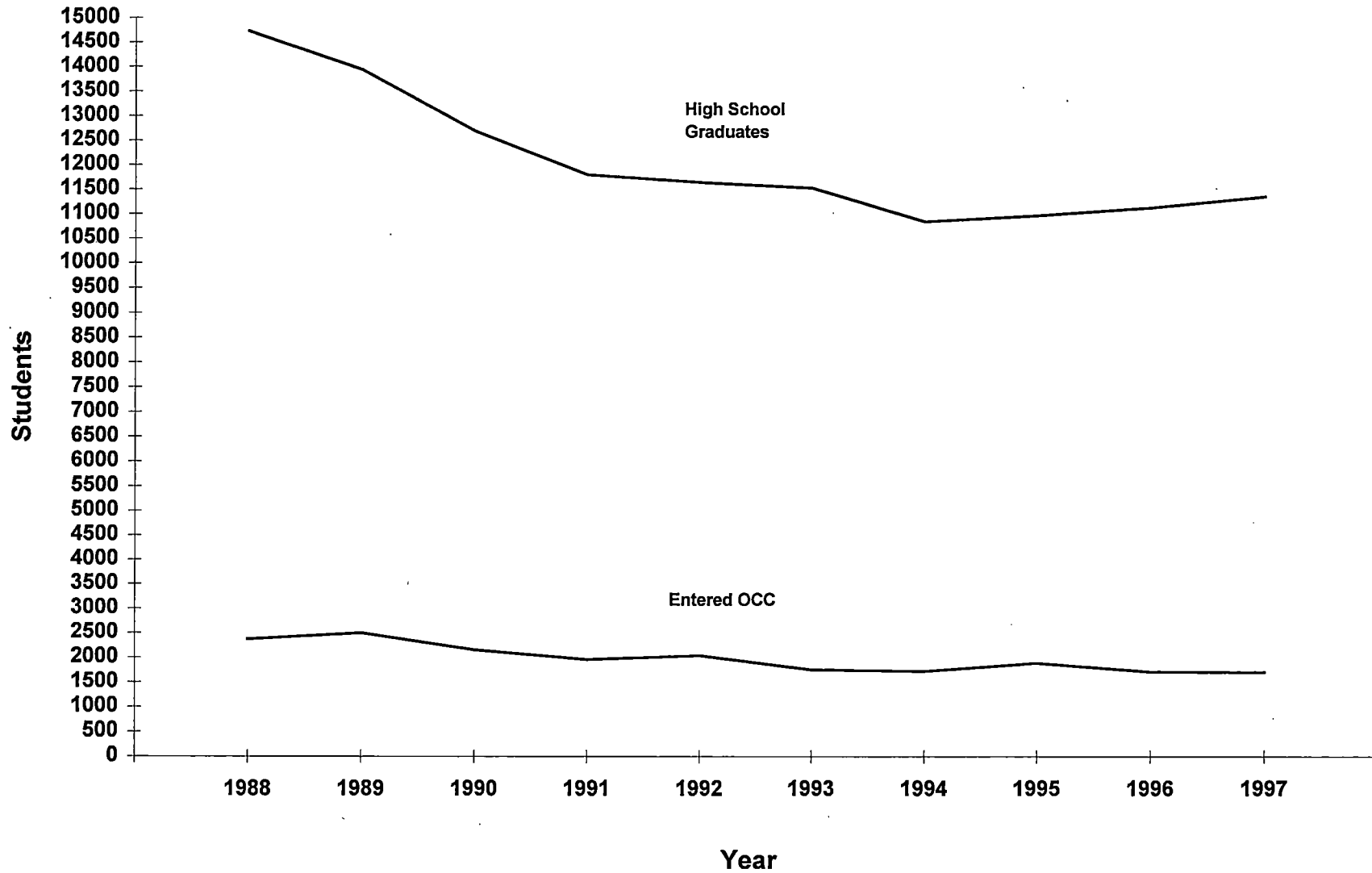
**Oakland Community College  
 Fall 1997 High School Penetration Report  
 Trend in Penetration Rate by Recruiting Region  
 (1988-1987)**



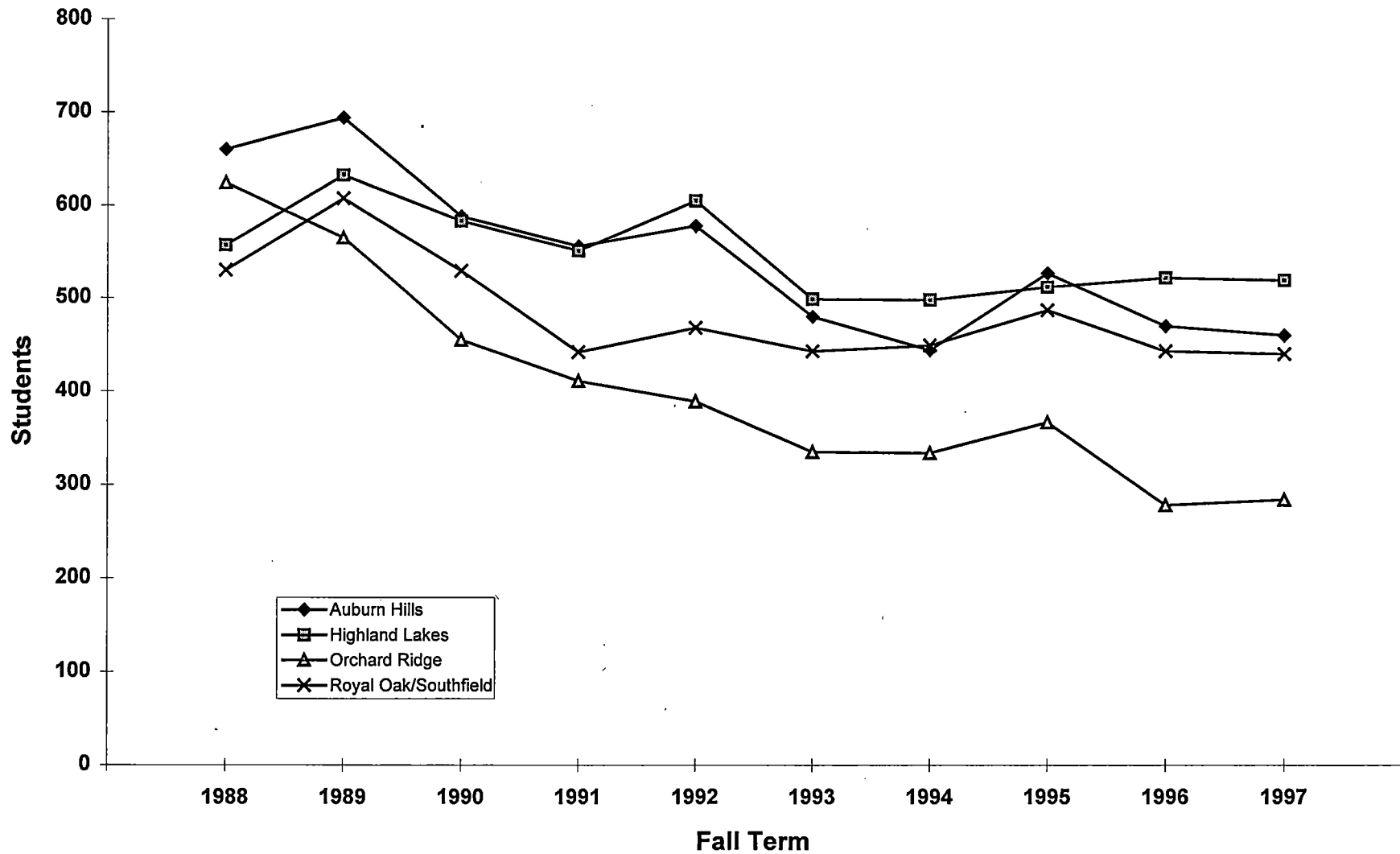
Oakland Community College  
Fall 1997 High School Penetration Report  
Trend in Penetration Rate  
(1988-1997)



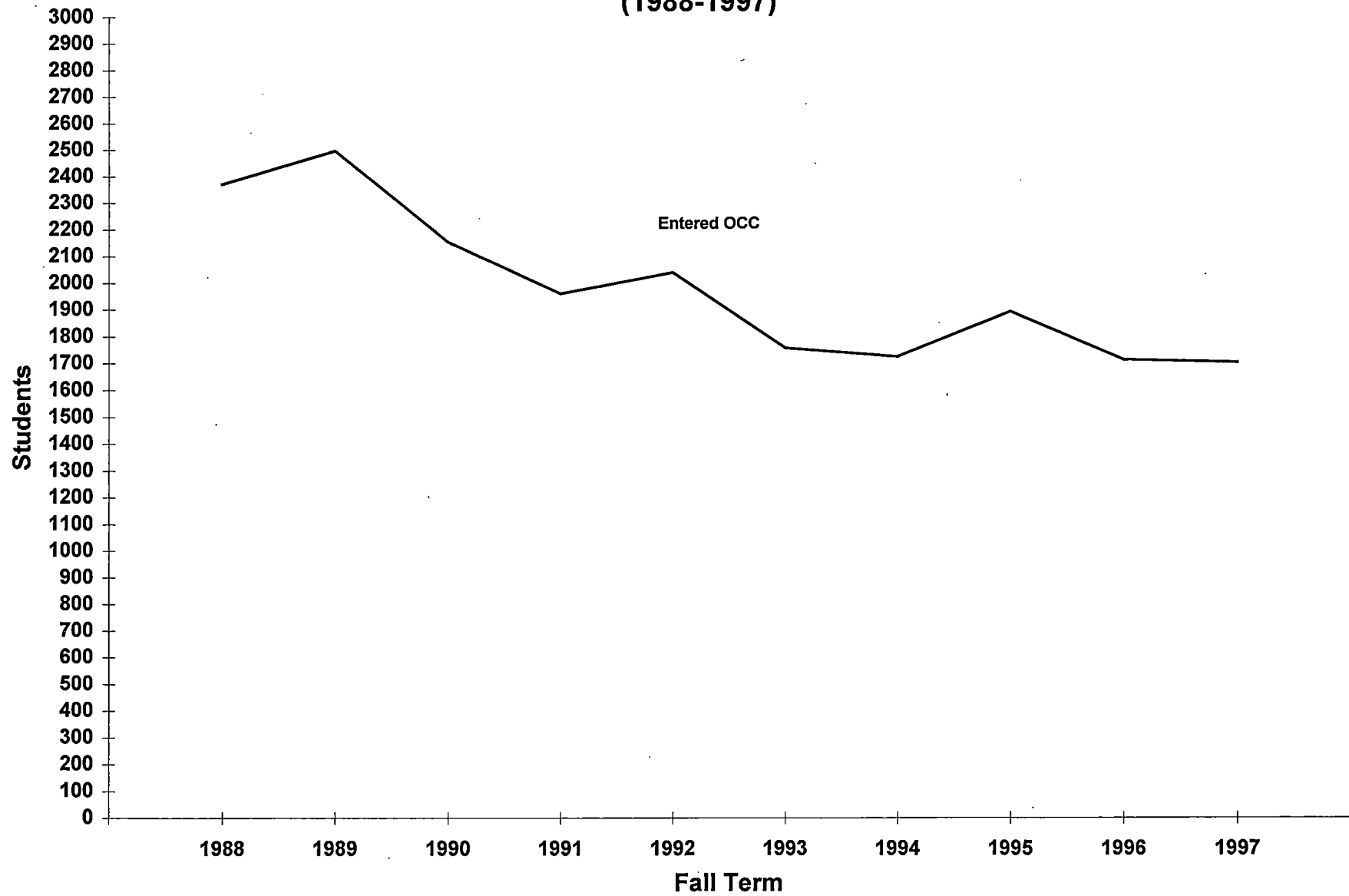
Oakland Community College  
Fall 1997 High School Penetration Report  
Comparison Between High School Graduates and Those Entering OCC  
(1988-1997)



**Oakland Community College**  
**Fall 1997 High School Penetration Report**  
**Trend in High School Graduates Entering OCC by Recruiting Region**  
**(1988-1997)**

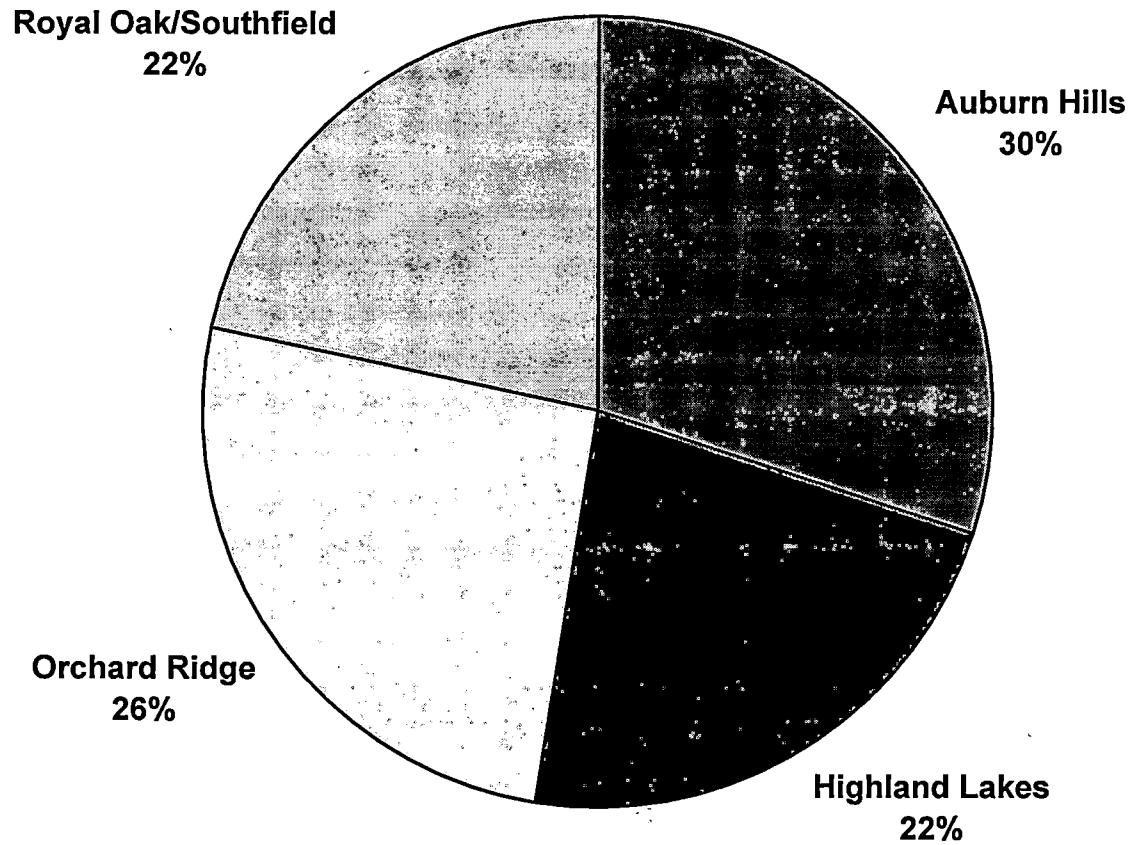


Oakland Community College  
Fall 1997 High School Penetration Report  
Trend in High School Graduates Entering OCC  
(1988-1997)

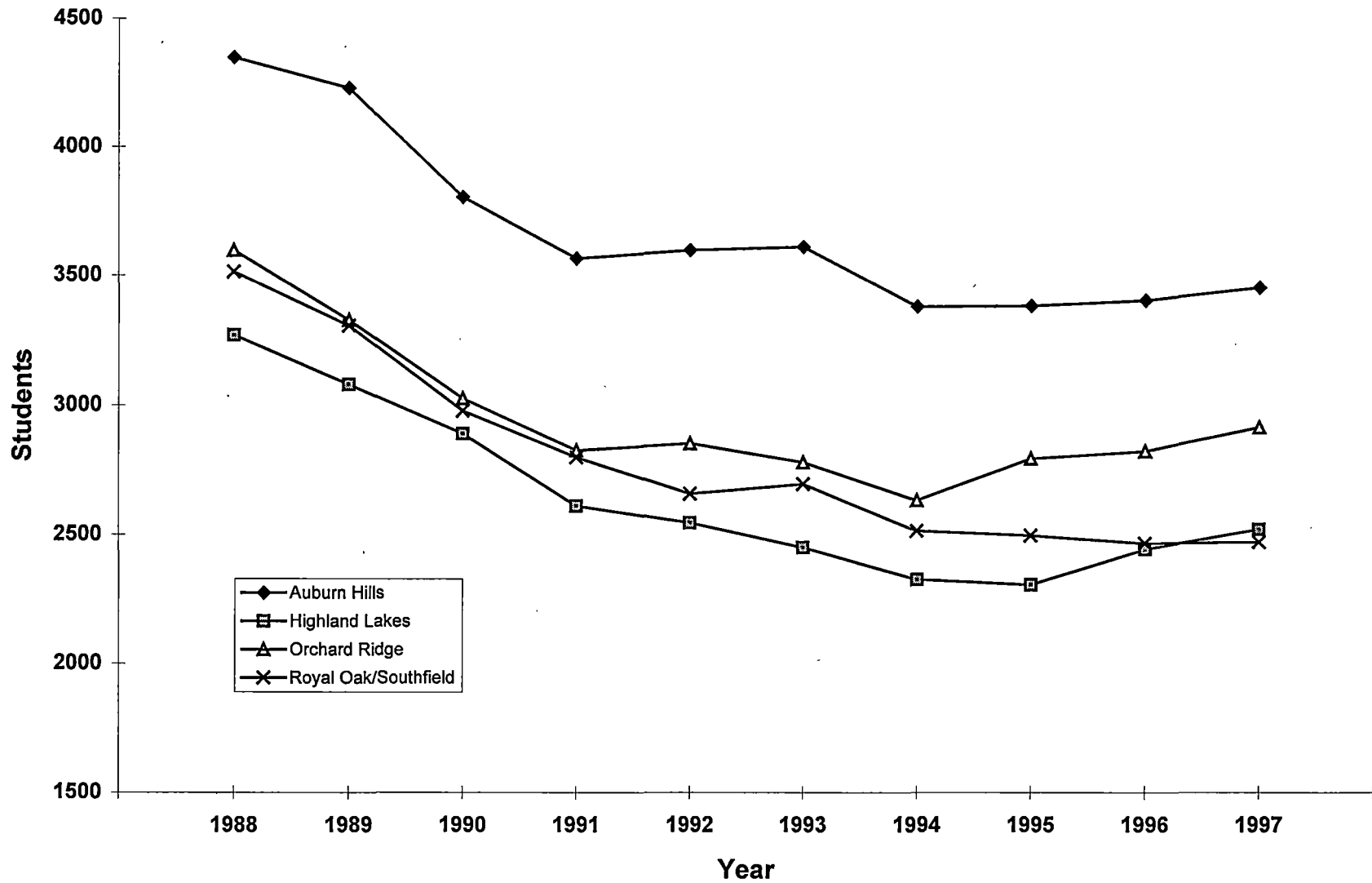




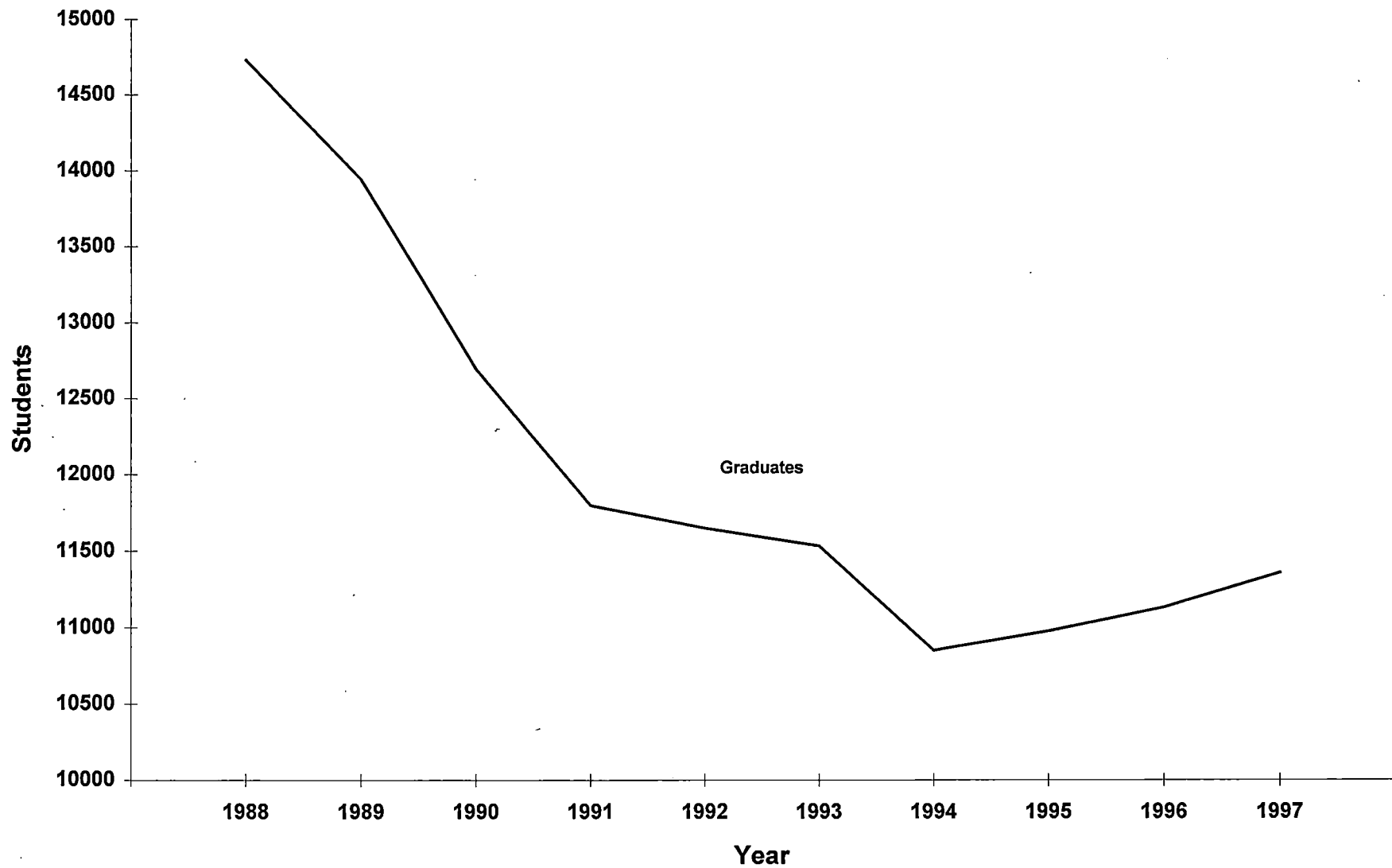
**Oakland Community College  
Fall 1997 High School Penetration Report  
Percent of High School Graduates by Recruiting Region  
1997**



# Oakland Community College Fall 1997 High School Penetration Report Trend in High School Graduates by Recruiting Region (1988-1997)



Oakland Community College  
Fall 1997 High School Penetration Report  
Trend in High School Graduates  
(1988-1997)



## **How Much Do You Know?**

- **In 1997, what was the total number of High School graduates in Oakland County?**
- **In 1997, which Oakland County High School graduated the largest number of students?**
- **Which Oakland County High School sent the largest number of students to OCC in the Fall of 1997?**
- **In the Fall of 1997 OCC's penetration rate was greatest at which Oakland County public High School?**

# Oakland Community College

## Fall 1997 High School Penetration Report

### Schools with the Largest Amount of Graduates in 1997

High School	1997 High School Grads
Troy (A.H.)	458
Rochester (A.H.)	421
Adams (A.H.)	412
West Bloomfield (O.R.)	347
Clarkston (H.L.)	340

### Schools with the Largest Amount of Students Sent to OCC in 1997

High School	1997 Entered OCC
Rochester (A.H.)	80
Milford (H.L.)	77
Walled Lake Central (H.L.)	77
Clarkston (H.L.)	70
Kimball (R.O./SF)	67

### Schools with the Highest Penetration Rate in 1997

High School	1997 Penetration Rate
Lamphere (R.O./SF)	28.1
Dondero (R.O./SF)	28.0
Waterford Kettering (H.L.)	27.8
Waterford Mott (H.L.)	26.3
Kimball (R.O./SF)	23.9

**High School**

---

**Auburn Hills Region**

**Auburn Hills - Public**

241	Adams
268	Athens
10	Avondale
41	Lahser
160	Lake Orion
220	Oxford
230	Pontiac Central
231	Pontiac Northern
240	Rochester
270	Troy

---

Subtotal - Public

**Auburn Hills - Private**

530	Academy of Sacred Heart
503	Bethany Christian
540	Cranbrook Kingswood
550	Detroit Country Day
	Eton Academy
576	Greater Life Academy
578	Indianwood Christian
586	Lutheran NW High School
615	Notre Dame Prep.(Pontiac/Oakland)
612	Oakland Christian School
614	Oxford Christian Academy
616	Roch Hills Christ. School
618	Roeper City & Country

---

Subtotal - Private

**Total - Auburn Hills**

**High School**  
**Highland Lakes Region**

---

**Highland Lakes - Public**

50	Brandon
70	Clarkston
140	Holly
151	Lakeland
150	Milford
280	Walled Lake Central
281	Walled Lake Western
290	Waterford Kettering
292	Waterford Mott

---

Subtotal - Public

**Highland Lakes - Private**

600	Our Lady of the Lakes
680	Springfld Christ. Acad.
	West Highland Christian

---

Subtotal - Private

**Total - Highland Lakes**

**Orchard Ridge Region**

**Orchard Ridge - Public**

40	Andover
100	Farmington
30	Groves
102	Harrison
101	North Farmington
200	Novi
31	Seaholm High School
180	South Lyon
300	West Bloomfield

---

Subtotal - Public

**High School**

**Orchard Ridge - Private**

520 Brother Rice

590 Marian

595 Mercy

640 St. Mary Prep.

---

Subtotal - Private

**Total - Orchard Ridge**

**RoyalOak/ Southfield Region**

**Royal Oak/Southfield - Public**

20 Berkley

80 Clawson

250 Dondero

110 Ferndale

130 Hazel Park

251 Kimball

170 Lamphere

190 Madison

210 Oak Park

260 Southfield

261 Southfield/Lathrup

---

Subtotal - Public

**Royal Oak/Southfield - Private**

501 Akiva Hebrew Day

505 Bishop Foley

502 SAA Beth Jacob

670 Shrine

535 Southfield Christian

690 Temple Christ. Academy

750 Yeshivath Gedoloh

---

Subtotal - Private

**Total - Royal Oak/Southfield**

**College-Wide**

Public

Private

---

**Grand total**



## Numeric List of High Schools

63338 ROOSEVELT  
63490 ADVENTURE  
63495 AGBUAMANOOGIAN  
63497 APOSTOLIC CHRSTN  
63500 ADELPHIAN ACAD  
63501 AKIVAHEBREW  
63502 BETHJACOB  
63503 BETHANY CHRISTN  
63505 BISHOPFOLEY  
63510 BLOOMFLD HL ACAD  
63513 BLOOMFIELD UNIV  
63515 BOYSREPUBLIC  
63520 BROTHER RICE  
63530 SACREDHEART ACA -  
63533 CHRISTMASTER  
63535 SOUTHFLD CHRISTN  
63540 CRANBROOK  
63550 DETROIT CTRY DAY  
63560 DOMINICAN ACAD  
63570 EMMANUEL CHRISTN  
63572 FAITHBAPTIST -  
63574 FIRSTBAPTIST  
63576 GREATER LIFE ACD  
63578 INDIANWOOD CHRST  
63580 KINGSWOOD  
63583 LEEWARD  
63586 LUTHERN NORTHWST  
63590 MARIAN  
63595 LADYOFMERCY -  
63597 NOVICHRISTIAN -  
63600 OURLADY OF LAKE  
63610 LADYOFSORROWS  
63612 OAKLAND CHRISTIA  
63614 OXFORDCHRISTIAN  
63615 PONTIAC CATHOLIC -  
63616 ROCHESTER HL CHR  
63618 ROEPERCITY CNTY  
63620 SAINTFREDERICKS  
63630 SAINTJAMES  
63640 STMARYS PREP  
63650 SAINTMARYS  
63660 SAINTMICHAELS  
63670 SHRINE  
63680 SPRINGFLD CHRIST  
63690 TEMPLECHRISTIAN  
63697 WHIGHLD CHR ACD  
63750 YESHBETH YEUDAH  
63800 ZIONCHRISTIAN  
63975 GENLEDUC DEVL P -  
63999 OAKLAND COUNTY

## Numeric List of High Schools

63000	OAKLAND
63010	AVONDALE
63020	BERKLEY
63030	GROVES
63031	SEAHOLM
63040	ANDOVER
63041	LAHSER
63050	BRANDON
63070	CLARKSTON
63080	CLAWSON
63100	FARMINGTON
63101	NORTHFARMINGTON
63102	HARRISON
63110	FERNDALE
63120	LINCOLN *
63130	HAZELPARK
63140	HOLLY
63150	MILFORD
63151	LAKELAND
63160	LAKEORION
63170	LAMPHERE
63180	SOUTHLYON
63190	MADISON
63200	NOVI
63210	OAKPARK
63220	OXFORD
63230	PONTIAC CENTRAL
63231	PONTIAC NORTHERN
63240	ROCHESTER
63241	ADAMS
63250	DONDERO
63251	KIMBALL
63260	SOUTHFIELD
63261	SOUTHFIELD-LATH
63268	ATHENS
63270	TROY
63280	WALLDLK CENTRAL*
63281	WALLDLK WESTERN*
63290	WATERFORD-KETT
63291	WATERFORD TWP-
63292	WATERFORD-MOTT
63300	WESTBLOOMFIELD

## High School Penetration Report

How to generate data for the number of recent high school graduates who enter OCC.

1. Through SPSS get into the appropriate One-Tenth Day Demo Save file.  
Example: x:\sis-data\one-tenth\demo-97.sav
2. Make sure that the following variables have a "data type" of numeric not alpha (hsgradyr, hscnty, hscore)
3. Go to Data then Select Cases. Choose Select IF and specify the following conditions:  
hsgradyr = 97 (for Fall 1997)  
hscnty = 63  
credreg > 0  
curric /= 'HSG' (not equal)
4. After selecting only those students who fit these conditions go to Statistics, Summarize, Frequencies. Choose hscore and hname. (Note hname may not run since it is a string variable.
5. Before printing the output go to Edit and choose Select All. Then print.

High School Penetration Report  
Report Outline (Fall 1997)

- ✓ 1. How has the total pool of available high school graduates changed over the past ten years? (Line graph of total high school graduates) *TREND IN H.S. GRADUATES*
- ✓ 2. How has the total pool of high school graduates changed over the past ten years within each recruiting region? (line graph based on total high school graduates within recruiting region) *(PUBLIC PRIVATE)*  
*TREND IN H.S. GRADUATES BY RECRUITING REGION*
- ✓ 3. Which recruiting region has the largest pool of high school graduates? (pie chart showing total high school graduates for 1997 by recruiting region)
- ✓ 4. How has the number of high school graduates entering OCC changed over the past ten years? (Line graph depicting total number of students entering OCC)
- ✓ 5. How has the total number of high school graduates entering OCC changed within each OCC recruiting region? (line graph showing ten year trend of students entering OCC by recruiting region)
- ✓ 6. How has the colleges penetration rate changed over the past ten years? (line graph depicting shift in penetration rate based on college wide data)
- ✓ 7. How has the penetration rate changed within each recruiting region? (line graph illustrating shifts using recruiting region totals)
- ✓ 8. In 1997, which school graduated the most students? (List of top 5 schools)
- ✓ 9. In 1997 which schools sent the most students to OCC? (List of top five schools)
- ✓ 10. In 1997 which schools did OCC have the greatest penetration? (List of top five schools)
- ✓ 11. Over the past five years which schools have experienced the greatest increase in graduates? (list of top five schools)
- ✓ 12. Over the past five years which schools have experienced the greatest decline in graduates? (List of top five schools)
- ✓ 13. Over the past five years where have we seen the greatest increase in the number of students entering OCC e.g. from which schools? (List of top five schools)
- ✓ 14. Over the past five years where have we seen the greatest decline in students entering OCC? (List of top five schools)
- ✓ 15. Over the past five years which schools have we seen the greatest increase in our penetration rate? (List of top five schools)
- ✓ 16. Over the past five years where have we seen the largest decline in our penetration rate? (List of top five schools)
17. To what extent does the increase/decrease of high school graduates compare to population shifts in the county? *COUNTY CALL WAYNE ST. U. AT MIMIC S.E. MI (LOU COOPER) 577-2424 ? - 51671*
18. What campuses are these students taking courses at?
- ✓ 19. What are the differences in penetration rate between the new report and the old report?