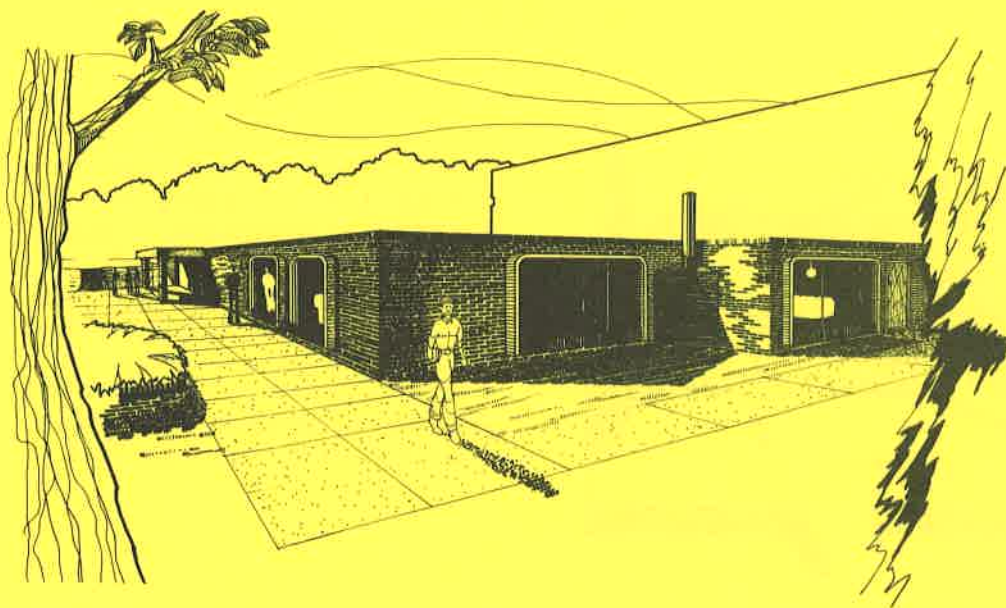


MICHIGAN CHRISTIAN COLLEGE IS GROWING!

Located at Rochester, Michigan, a northern suburb of Detroit, in one of the most beautiful settings found anywhere, MCC is growing at an unprecedented pace. With a 45% increase over last year, the enrollment of 343 this year is expected to pass 400 in the 1976-1977 school year.

In the immediate future the need for additional facilities on the MCC campus will become pressing challenges. There is no better way to honor the memory of loved ones and serve tomorrow's youth than with lasting major gifts to Michigan Christian College.

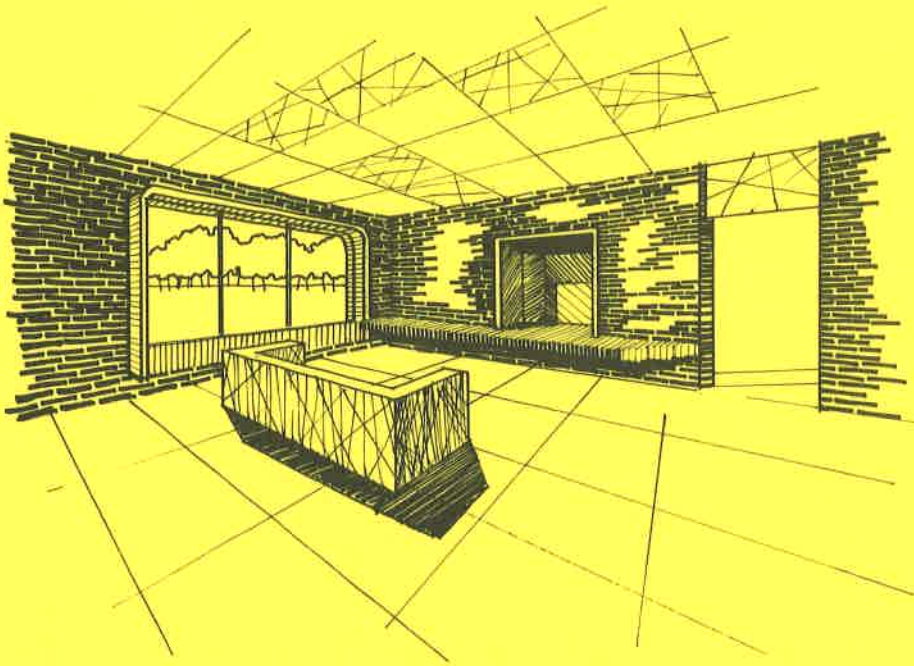
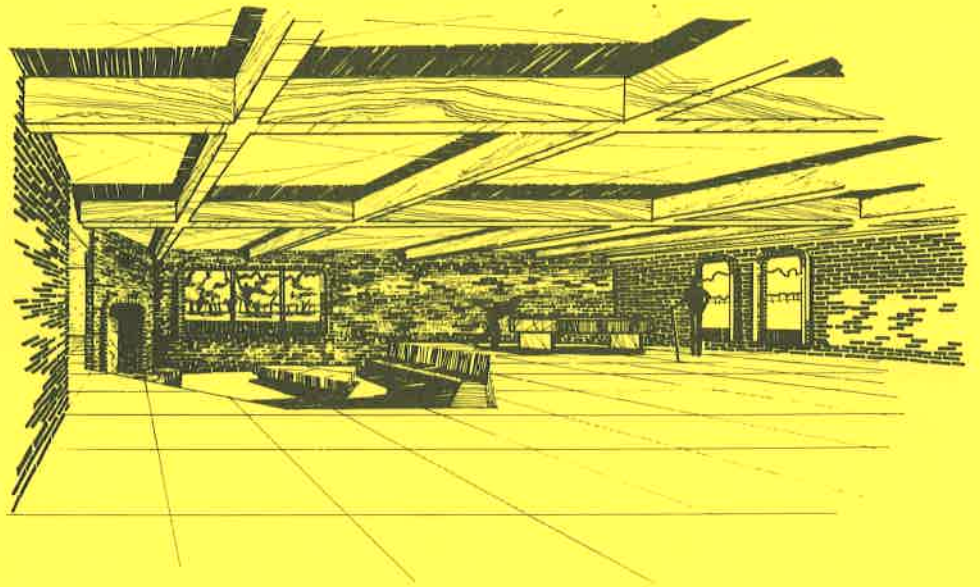


THE CLYDE AND ELIZABETH UTLEY **STUDENT CENTER**

PROJECTED COMPLETION DATE — FALL 1976

**MICHIGAN
CHRISTIAN
COLLEGE**
800 W. AVON ROAD
ROCHESTER, MICHIGAN

A vital ingredient in a satisfactory campus atmosphere is an adequate area for student relaxation and leisure. Students living on the MCC campus spend as much as 70% of their time outside of formal class sessions, and with more than 300 living in dormitories at MCC, the present student center building is inadequate to fill their needs.



The addition of this new building, the first since the construction of the Alma Gatewood dormitory in 1970, will triple the space available for student activities and will be a valuable addition to the growing school campus.

A fitting tribute to this christian couple who were staunch supporters of Michigan Christian College from its beginning in 1959 until their passing. Clyde Utley died in 1971 at the age of 80 and Elizabeth passed away on December 22, 1975 at the age of 85. Bro. and Sister Utley were loved by countless people whose lives were touched by their sixty years of christian service.

This new student center has been made possible by the families and friends of the two Utley sons, Wheeler and Bob, together with a matching pledge from the Ladies Associates of Michigan College.

