

# **DALNET and NOTIS Fact Sheet**

## ■ **DALNET**

DALNET, the *Detroit Area Library Network*, is a non-profit corporation formed in 1985 to enable its members to provide improved library service through shared automation. WSU is the host institution for managing the DALNET central site, functioning also as the "pilot" site for the implementation of each module of NOTIS. Member institutions now include: Wayne State University, Detroit; Oakland University, Rochester; William Beaumont Hospital, Royal Oak; Botsford General Hospital, Farmington Hills; Wayne County Community College, Detroit; and the Detroit Associated Libraries, including the Detroit Public Library and the McGregor Library of Highland Park.

## ■ **NOTIS**

The NOTIS software was selected in 1985 to meet the automation requirements of Wayne State's Libraries and those of the other DALNET libraries.

Installed at WSU in December 1985, NOTIS, the *Northwestern Online Total Integrated System*, is a software package developed in the 1970's for Northwestern University Library to run on an IBM, or compatible, mainframe. Under continual enhancement, NOTIS currently supports cataloging/authority control, acquisitions/serials control, circulation, and online catalog functions, using a central bibliographic database. The online catalog, named LUIS for Library User Information System, displays not only bibliographic and holdings data, but also circulation and acquisitions information, to library users.



## ■ SOFTWARE

NOTIS Release 4.3, MVS version, is currently installed in production. Release 4.4, received May 21, 1987, is being tested. Notis at WSU runs with this system software: MVS, CICS, VTAM, ACF2 (security), Syncsort.

## ■ HARDWARE

The NOTIS software runs on a dedicated IBM 4381 Model 2 16Mb cpu, with 3 IBM 3380 single-density disk drives providing 7.5 gigabytes of storage. Central site hardware is located at the WSU Computing Services Center (CSC), which provides systems and technical support for the facility. Front-end processors, tape drives, and system printers are shared with WSU administrative computing. An IBM 3081 used for administrative computing is a backup cpu for NOTIS.

## ■ TELECOMMUNICATIONS

NOTIS uses the University-wide network, WSUnet, which is operated by the WSU CSC, with SNA protocol. Dedicated terminals in libraries are connected via IBM 3174 controllers, or equivalent for Telex 476L's, to ports on one of the CSC's front-end processors, an IBM 3725 or Amdahl 4705. LUIS is available on WSUnet for access by the over 1,000 campus terminals directly connected to the network and all supported terminals dialing-in via the state-wide MERIT network. Protocol conversion for dial-up terminals is provided by SIM 3278 software operating on the mainframe.

## ■ TERMINALS

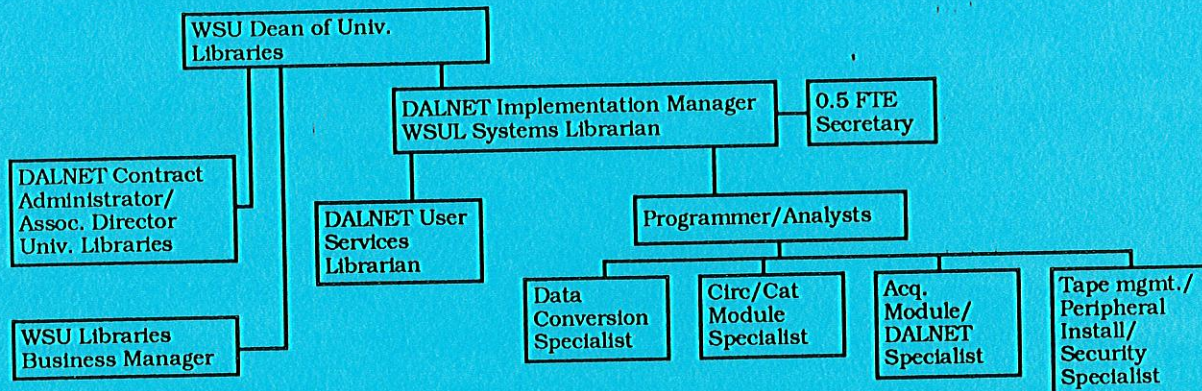
<b>Dedicated DALNET Terminals</b>	<b>Installed</b>	<b>To be Installed 1987/88</b>	<b>Total</b>
WSU Libraries	63	46	109
Oakland University Libraries	14	7	21
William Beaumont Hospital	—	4	4
Botsford General Hospital	—	4	4
Wayne County Comm. College	—	27	27
<b>Total</b>	<b>77</b>	<b>88</b>	<b>165</b>
<b>Remote Access Terminals</b>			
WSU Campus	1,000	200	1,200

Terminals currently installed for dedicated access include: Telex 476L's for OCLC transfer and data entry; IBMpc's with 3270 emulation; IBM 3178/79 and 3191/92 terminals. Terminals to be installed include: Wyse WY60's and IBM Token Ring.



## ■ NOTIS IMPLEMENTATION

NOTIS is implemented module by module, at each DALNET site, beginning with the loading of bibliographic records.  
Implementation of the NOTIS modules is supported by WSU Libraries:



The WSU Computing Services Center provides staff to operate the central site.

## ■ DALNET GOVERNANCE

DALNET policy is set by a Board, with elected officers, including a President, Vice-President, Secretary, and Treasurer. WSU is the fiscal agent for DALNET. Member institutions sign a service agreement with WSU to participate in the DALNET Online System. Committees include Development, Database Standards, and LUIS Screens.

## ■ DALNET DATABASE STATISTICS

Bibliographic Records	To be Loaded 1987/88	Anticipated No. in 5 yrs.
WSU Libraries	800,000	1,000,000
Oakland Univ. Libraries	210,000	275,000
DC3 Hospitals, incl. Beaumont	22,000	62,000
Botsford General Hospital	2,000	3,000
Wayne County Comm. College	36,000	60,000
Detroit Public Library	700,000	900,000
<b>Total</b>	<b>1,770,000</b>	<b>2,500,000</b>

August 1987





Wayne State University

WSU Libraries  
Detroit, Michigan