



DALNET and NOTIS Fact Sheet

■ **DALNET**

DALNET, the *Detroit Area Library Network*, is a non-profit corporation formed in 1985 to enable its members to participate in improved library services through shared automation. WSU is the host institution for managing the DALNET central site, functioning also as the "pilot" site for the implementation of each module of NOTIS. The eleven member institutions now include: Wayne State University, Detroit; Oakland University, Rochester; William Beaumont Hospital, Royal Oak; Botsford General Hospital, Farmington Hills; Wayne County Community College, Detroit; the Detroit Associated Libraries, including the Detroit Public Library and the McGregor Library of Highland Park; Children's Hospital of Michigan; the University of Detroit; the Oakland County Law Library; Macomb Community College, Warren; and Harper Hospital, Detroit.

■ **SOFTWARE**

The NOTIS software was selected in 1985 to meet the automation requirements of Wayne State's Libraries and those of the other DALNET libraries.

Installed at WSU in December 1985, NOTIS, the *Northwestern Online Total Integrated System*, is a software package developed in the 1970's for Northwestern University Library to run on an IBM, or compatible, mainframe. Under continual enhancement, NOTIS currently supports cataloging/authority control, acquisitions/serials control, circulation, and online catalog functions, using a central bibliographic database. The online catalog, named LUIS for Library User Information System, displays not only bibliographic and holdings data, but also circulation and acquisitions information, to library users.

NOTIS Release 4.4, MVS version, is tested and installed. Release 4.5 is targeted for October 1988 delivery, after which it can be tested and installed. NOTIS at WSU runs with this system software: MVS, CICS, VTAM, ACF2 (security), Syncsort, VPS (distributed printing), SAS (report writer), and CICS Monitor.

NOTIS is implemented module by module, at each DALNET site, beginning with the loading of bibliographic records. Implementation of the NOTIS modules is supported by WSU Libraries.

■ **TELECOMMUNICATIONS**

NOTIS uses the Wayne State University-wide network, WSUnet, which is operated by the WSU Computing & Information Technology's Computing Services Center (CSC), with SNA protocol. Most terminals in libraries are connected via IBM 3174 controllers, or equivalent for Telex 476L's, over leased phone lines to ports on one of the CSC's front-end processors, IBM 3725's. Other terminals are connected to the network via IBM Token Ring LAN's using terminal emulation software or via ASCII protocol converters at remote sites. LUIS is available on WSUnet for access by the over 1,200 campus terminals directly connected to the network and all supported terminals dialing-in via the state-wide MERIT network. Protocol conversion for dial-up terminals is provided by SIM 3278 software operating on the mainframe.

■ TERMINALS

Dedicated DALNET Terminals	Installed	To be Installed 1988/89	Total
WSU Libraries	120	45	165
Oakland University Libraries	24	15	39
William Beaumont Hospital	4	0	4
Botsford General Hospital	4	0	4
Wayne County Comm. College	32	20	52
Detroit Associated Libraries	9	16	25
Children's Hospital	4	0	4
University of Detroit	0	15	15
Oakland County Law Library	0	3	3
Macomb Comm. College	0	28	28
Harper Hospital	0	4	4
Total	197	146	343

Remote Access Terminals

WSU Campus	1,200	200	1,400
------------	-------	-----	-------

Terminals currently installed for dedicated access include: Telex 476L's for OCLC transfer and data entry; pc's with 3270 emulation; IBM 3178/79 and 3191/92 terminals; Memorex 2291's; Wyse WY60's; and IBM Token Ring using IBM PS/2's.

■ HARDWARE

The NOTIS software runs on a dedicated IBM 4381 Model 2 16Mb cpu, with 4 IBM 3380 single-density disk drives providing 10 gigabytes of storage. Central site hardware is owned by the library and located at the WSU CSC, which provides systems and technical support for the facility. Front-end processors, tape drives, and system printers are shared with WSU administrative computing. The IBM 3081 used for administrative computing is a backup cpu for NOTIS. Hardware expansions take place as needed.

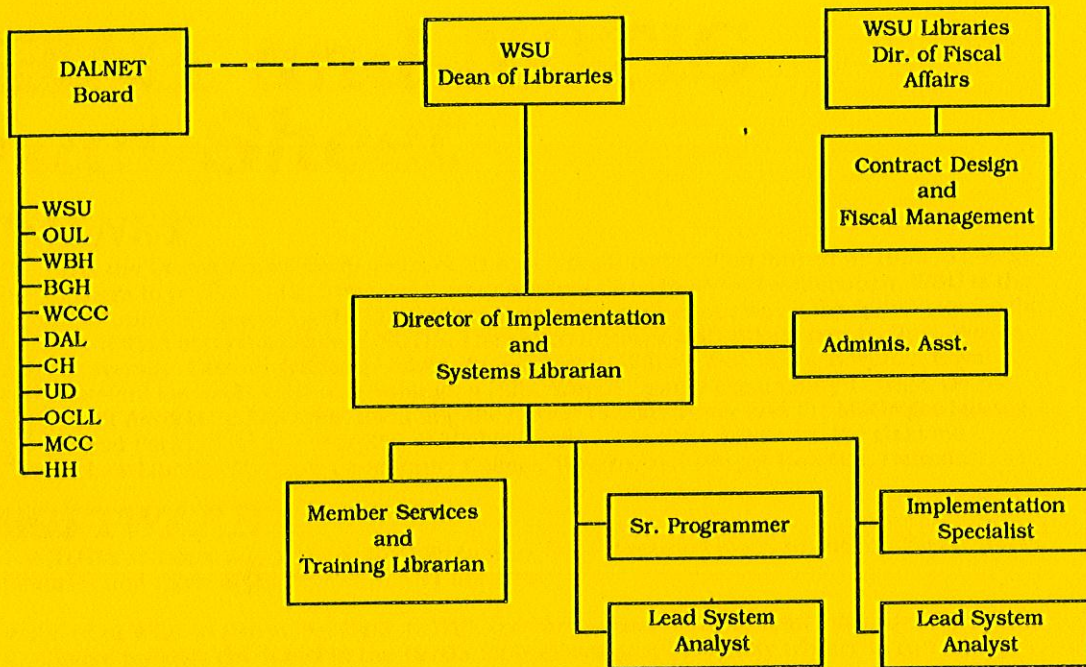
Relationship to WSU Computing Services Center

WSU Libraries have negotiated on behalf of DALNET members a facilities service agreement with the WSU Computing Services Center. This provides low cost of daily operations of a routine nature, with no duplication of effort. WSU Libraries reimburses the Computing Services Center for costs of operating the Libraries' mainframe. The Computing Services Center staff also provides valuable consulting services as needed. The Libraries employ and supervise all application programmer analysts and other technical staff necessary to continue to develop this multi-type library network.

■ DALNET GOVERNANCE

DALNET policy is set by a Board, with elected officers, including a Chair, Vice-Chair, Secretary, and Treasurer. WSU is the fiscal agent for DALNET. At this time, DALNET does not have any assets. Member institutions sign individual service agreements with WSU to participate in the DALNET Online System. Coordination among institutions is done through Committees including Development, Database Standards, and LUIS Screens.

■ ORGANIZATION



■ DALNET DATABASE STATISTICS

Bibliographic Records	Loaded as of October 1988	Anticipated No. added in 2 yrs.	Total by June 1990
WSU Libraries, incl. Center for Res. Libs	981,000	350,000	1,331,000
Oakland Univ. Libraries	220,000	132,000	352,000
Hospitals, incl. Beaumont, Children's, Harper	34,000	2,900	36,900
Botsford General Hospital	2,500	300	2,800
Wayne County Comm. College	34,000	2,400	36,400
Detroit Public Library	688,000	320,000	1,008,000
University of Detroit	0	275,000	275,000
Oakland County Law Library	0	3,000	3,000
Macomb Comm. College	0	98,000	98,000
Total	1,959,500	1,183,600	3,143,100

October 1988



Wayne State University

WSU Libraries
Detroit, Michigan