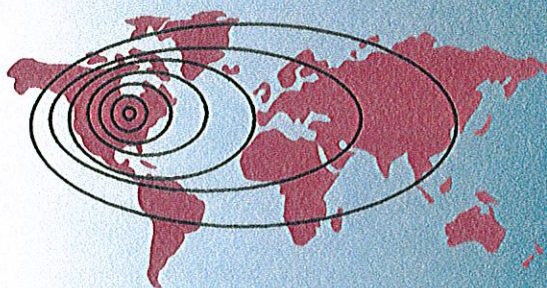


DALNET

THE DETROIT AREA
LIBRARY NETWORK



ONE REGION
SHARING
THE WORLD

Table of Contents

What is DALNET?	3
• A Leader in the Field	
• A Regional Information Hub	
How Does DALNET Work?	5
• Stating the Vision	
• Creating Partnership and Cooperation	
• Keeping Our Promises	
• Building Our Strength	
Achieving the Means to Access Today	9
• LUIS (Library User Information System)	
• Library Management System	
• DALNET Shared Electronic Databases	
Improving the Means to Access Tomorrow	11
• World Wide Web Integration	
• Migration to Horizon System	
Why DALNET?	13
• Benefits for DALNET Libraries	
• Benefits for DALNET Library Users	

What is DALNET?

A Leader in the Field

The Detroit Area Library Network, DALNET, is a consortium of academic, public, and special libraries located in Southeast Michigan. Founded as a nonprofit corporation in 1985, DALNET enables its members to better serve the information needs of their users through cooperative efforts among multi-type libraries in the Metropolitan Detroit area, and by sharing advanced library automation applications. Wayne State University is the host institution for DALNET, and the central site for the consortium's shared integrated library system.

DALNET has over ten years of experience running a shared integrated library system and fostering cooperation and innovation in a complex environment. As a leader, DALNET is constantly finding new ways to broaden services and access, incorporating advances in technology into the system in an efficient and cost-effective way. Membership in DALNET opens the door to a wealth of technical and human resources far beyond what is available to any single institution.

A Regional Information Hub

DALNET is committed to develop, through partnership and shared effort, its role as a model regional information hub. The resources of member institutions are provided to the community and the world at large through the DALNET shared computer system.



The system also acts as a gateway connecting DALNET libraries' patrons to ever-increasing numbers of resources available from remote locations via the Internet and the World Wide Web. By supporting the lifelong learning needs of the region, DALNET will also provide opportunities for community information providers to use the online system for purposes of resource sharing.

How Does DALNET Work?

Stating the Vision

DALNET knows firsthand what libraries can accomplish through working together. By the year 2000, DALNET will be widely recognized as a model cooperative information services provider, one that anticipates and supports the information needs of a diverse community of users in the Metropolitan Detroit area. Its creative partnering will continue to provide excellent, flexible, responsive and cost-effective services to DALNET libraries and the communities they serve. DALNET, as a regional information provider of unique resources to members and their communities, will continue to build its role as an established gateway to the world's information resources.

Creating Partnership and Cooperation

Directed by a Board composed of representatives of its member organizations, DALNET membership is open to academic, public, school, and special libraries as well as other information organizations in seven Metropolitan Detroit county regions. To make the regional information hub possible, DALNET members agree to share an online system, contribute to its database, and are committed to resource sharing.

A list of DALNET member institutions follows, with information regarding the size of the institutions, patrons served, library records currently online (including bibliographic, copy holdings, item, and

acquisitions records), number of library workstations installed, and the volume of transactions made by users of LUIS, the consortium's online catalog and databases.

PARTICIPATING DALNET INSTITUTIONS	Estimated Volumes (9/96)	Estimated Patrons (9/96)	Library Records (7/97)	Library Wkstations (9/96)	LUIS Transactions* 1995/96
Botsford Hospital	10,000	500	34,271	11	26,219
Children's Hospital	7,000	1,400	28,786	5	58,000
Detroit Institute of Arts	160,000	40	75,644	20	81,331
Detroit Public Library (Including Highland Park)	5,368,271	347,000	5,355,524	300	8,038,353
Detroit Receiving Hospital φ▲	12,000	1,600	4,092	4	0
Grace/Sinai Hospital φ▲	37,000	1,500	9,068	5	0
Harper Hospital	13,200	7,500	63,864	0	55,758
Huron Valley Hospital φ▲	2,000	1,300	0	1	0
Hutzel Hospital φ▲	15,486	300	8,702	0	0
Macomb Community College	124,834	26,000	427,587	43	1,172,567
Oakland Community College	180,000	35,000	497,321	95	2,228,159
Oakland County Law Library	60,000	**	24,460	8	36,950
Oakland University	1,710,000	15,000	1,508,941	108	4,553,688
Rehabilitation Institute φ▲	7,190	638	5,574	4	0
University of Detroit Mercy	614,397	8,100	1,151,257	88	2,555,390
Veterans Adm. Med.Center φ▲	13,920	400	20,226	7	0
Walsh College	25,000	3,800	85,797	17	198,401
Wayne County Comm. College	77,472	11,000	181,785	74	699,343
Wayne State University	2,904,641	50,000	5,073,630	1300	15,122,106
William Beaumont Hospitals	36,500	1,400	72,902	14	97,589
TOTALS	11,378,911	512,478	14,629,431	2,104	34,923,854

φCirculation Module Not Yet Implemented

▲Public Access Equipment Not Yet Installed

*Figures do not include remote access transactions

**No patron registration; items do not circulate

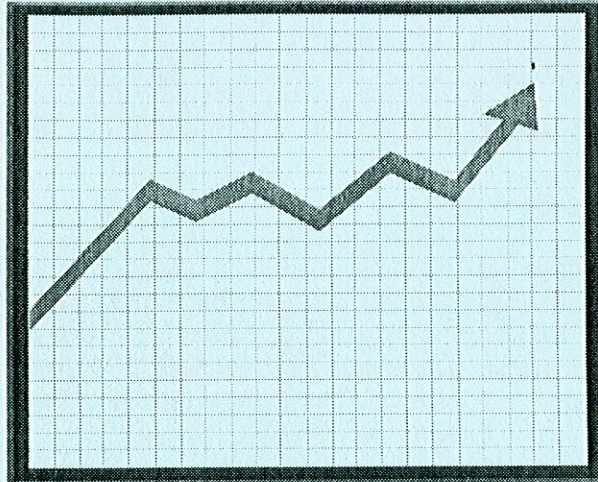


Keeping Our Promises

DALNET policy is set by its Board, with officers elected annually for the positions of Chair, Vice Chair, and Secretary. Member institutions sign individual service agreements to participate in the DALNET Online System. Decision-making is accomplished with every member institution having representation on the DALNET Board and, if desired, in various policy-making committees and task forces. This participation enables DALNET librarians to play a leadership role in the delivery of information to meet the library-based learning, research, professional, cultural, and recreational needs of their users.

The values and principles to which the DALNET membership subscribes are: to give the highest priority to service and end-users; to deliver quality in all operational areas; to be committed to resource sharing; to provide ease of access to information; to recognize partner diversity and the need to be flexible in implementation of initiatives; to build strength based on common goals and needs; to be a learning organization that develops and shares staff expertise; to be creative; and to provide leadership in information issues within Michigan.

DALNET's business principles maximize members' investments. DALNET strives to engage in cost-effective practices; to share local and central site expertise; to be efficient in all operational areas; to gather, evaluate and distribute relevant information before reaching a decision; to respect local institutional values/principles and operational priorities; and to develop effective group processes for good decision-making.



Building Our Strength

Members of DALNET enjoy many benefits of being active participants in a large consortium. DALNET membership facilitates resource-sharing and reciprocal borrowing, which is important to meeting the information needs of every library's clientele. This is of particular importance to academic institutions since resource-sharing capabilities are considered in the accreditation process of colleges and universities, as well as health care systems. In addition, the combined resources of the membership increase leverage in negotiations with vendors and system service providers and also increase the likelihood of success in seeking and attracting external funding.

Achieving the Means To Access Today

LUIS

LUIS (Library User Information System) is the integrated online library system that is shared by DALNET member libraries. LUIS is accessible from terminals and desktop computers in the DALNET member libraries, and from other computers connected to their campus or institutional networks. The LUIS system is also accessible through the Internet using either a dial-in or direct Internet connection. Full instructions, and links into the system, may be found on the LUIS home page at this URL: <http://www.lib.wayne.edu/dalnet/>.

LUIS includes the union catalog of all DALNET member libraries' holdings, which may be searched as a whole or by individual library. A large collection of periodical abstract/index databases is mounted on the LUIS system, and employs the same search interface as the online catalog. Titles include a collection of H.W. Wilson databases with abstracts, *Current Contents*, *PsycInfo*, *ERIC*, and others.

The LUIS system also supports the Z39.50 information retrieval standard, allowing links to online catalogs and other types of databases located outside of DALNET at other libraries or commercial sites. These remote resources available through the LUIS system also use the same search interface as the online catalog. LUIS's Z39.50 capability allows DALNET to share its resources with other libraries.



Library Management System

Behind the LUIS system that users see is a fully integrated library management system that DALNET libraries use to automate and manage their operations. The system includes modules for acquisitions, cataloging, authority control, serials control, and circulation. In addition to sharing catalog records in the DALNET union catalog, member libraries also share headings and cross references by using the system's shared authority file. National standards are followed and are fully supported by the system.

The LUIS system runs on an IBM mainframe computer located at Wayne State University. The system software is known as NOTIS LMS (Library Management System) and is licensed from Ameritech Library Services. The LUIS Z39.50 facility runs on an IBM RS6000 computer directly connected to the LUIS mainframe. Member libraries connect to the system using the TCP/IP protocol; SNA is also supported but is being phased out.

DALNET Shared Electronic Databases

Member libraries are invited to participate in shared database licenses for resources made available through the LUIS system or the World Wide Web. There is generally a substantial saving over the individual cost. A few of these resources are licensed by the consortium as a whole, but most are shared by a subset of member libraries. LUIS databases include mainly citations and abstracts; many of the World Wide Web-accessible databases include full-text or full-image sources as well.

Improving the Means To Access Tomorrow

World Wide Web Integration

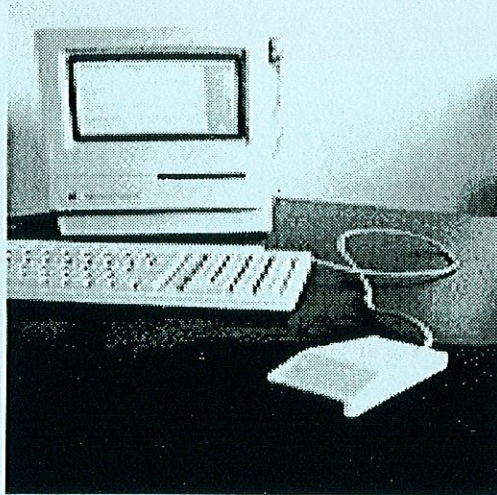
In the near future the LUIS system will become better integrated with the World Wide Web through the installation of a Z39.50 to WWW gateway system. A prototype system, called WebLUIS, is being tested at Wayne State University. A link to WebLUIS may be found on the LUIS home page (mentioned previously). Some of the capabilities of Z39.50 to WWW gateway systems include:

- Works with standard World Wide Web software such as Netscape or Internet Explorer.
- Patron-initiated forms for ILL and other types of requests.
- URLs in catalog records appear as clickable hot links.
- "Search redirection" -- clicking on a subject or author heading will initiate a new search on that heading.

Migration to Horizon System

Plans are well under way to migrate from our main-frame system to a new state-of-the-art system. The new system is called Horizon and is also a product of Ameritech Library Services. Horizon employs client/server architecture and is fully integrated with the World Wide Web. Here are some of its features:

- Graphical display with a point-and-click interface.
- Access via the World Wide Web from home, office, or worldwide.



- Works with popular World Wide Web software such as Netscape or Internet Explorer.
- "Search redirection" -- click on a title, author, or subject heading to submit a new search on that heading.
- Patron-initiated requests for materials.
- "Patron empowerment" allows users to access their personal data using a PIN.
- Gateway to World Wide Web resources world-wide; integration of remote resources with the local system.
- Ability to directly link catalog records to multimedia sources, especially full text and images.

Why DALNET?

Benefits for DALNET Libraries:

- **A better, more powerful system** than a single library could obtain.
- **Technical staff** -- the cost of highly skilled technical staff is shared; their expertise is a resource available to all.
- **Efficient automation** of behind-the-scene operations.
- **Maximize investments** in collections and resources through resource sharing.
- **Consortium discounts** through shared database licenses.
- **Collegial cooperation** and knowledge sharing among DALNET and member libraries' staff.
- **Links to regional and national networks** to expand access beyond our region.
- **Standards** for linking to other systems and data formats to ensure future transferability.
- **External funding opportunities** for library network participation.

Benefits for DALNET Library Users:

- **A single search** of the union catalog gives holdings and up to the minute status information for all DALNET libraries.
- **Same interface** for all LUIS resources. Save and re-execute searches in several online catalogs and databases.
- **Expanded access** through resource sharing.
- **Search from anywhere** -- home, office, or worldwide via the Internet.
- **Familiar searching** -- when visiting other DALNET libraries, the system will be familiar.
- **Gateway to remote resources** -- through the existing Z39.50 facility, and (coming soon) the World Wide Web.
- **Providing multi-type library services** to citizens of our region.



To Learn More

If you'd like to find out more about the services and benefits that DALNET membership provides, please contact the DALNET office at Wayne State University in Detroit.

DALNET Staff (Fax: 313-577-3615)

Louise Bugg, Director of
DALNET Online System.....(313) 577-4058
Anaclare Evans
Systems Librarian..... (313) 577-4002
Jim Green
Systems Librarian..... (313) 577-6439
Adriene Lim
Database Mgmt. Librarian.....(313) 577-0367

We also encourage you to visit the DALNET Home Page at <http://www.lib.wayne.edu/dalnet/>. This home page is located on the Wayne State University Library System's web server and is maintained by DALNET staff. Our web page gives you access to DALNET and LUIS information online, along with links to other DALNET-member sites.

The DALNET Office is located at Wayne State University, Technical Services and Systems, 5048 Gullen Mall, Detroit, Michigan 48202