

Institutional Research Report

**Landscape Design
Degree and Credit Hour Trends Reports
for
Curriculum Review Committee**



**OAKLAND
COMMUNITY
COLLEGE**

TABLE OF CONTENTS

Landscape Design Degree Trends Report

LAD Degree Trends Summary

LAD Ten-Year Trend

LAD Rate of Change

LAD Three-Year Moving Mean

College-Wide Ten-Year Trend

Biology Credit Hour Trends Report

BIO Credit Hour Trends Summary

BIO Ten-Year Trend

BIO Three-Year Moving Mean

BIO Rate of Change

College-Wide Ten-Year Trend

Landscape Technology Credit Hour Trends Report

LST Credit Hour Trends Summary

LST Ten-Year Trend

LST Three-Year Moving Mean

LST Rate of Change

College-Wide Ten-Year Trend



OAKLAND
COMMUNITY
COLLEGE

Degree Trends Report
Landscape Design
LAD
2004-05

Prepared by:
Oakland Community College
Office of Institutional Research
March 10, 2006

**Oakland Community College
Degree Trends Report
Landscape Design (LAD)
1995-96 through 2004-05**

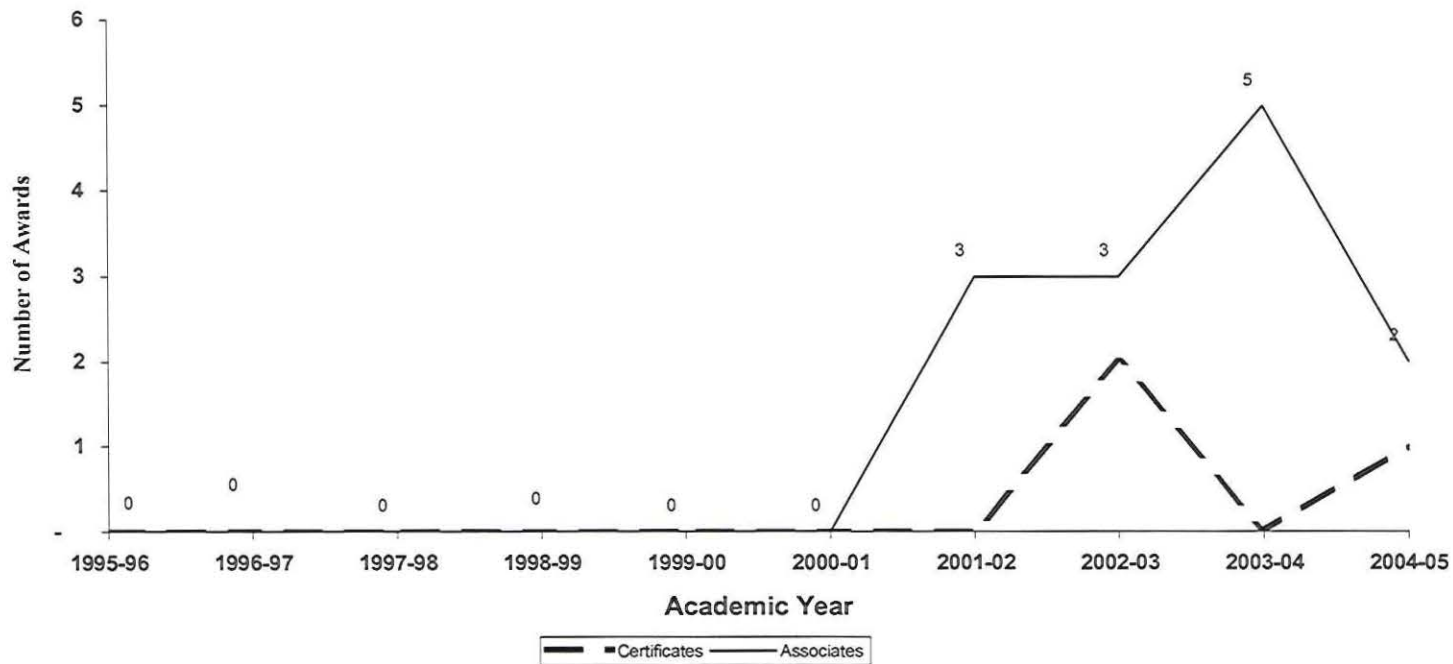
The Degree Trends Report is developed by the Office of Institutional Research based on data compiled from official college records which are submitted to the State of Michigan for the IPEDS (Integrated Post-Secondary Education System) Annual Degrees Conferred Report. The Degree Trends Report examines trends of OCC degrees, based on specific programs. The standard format offers information about certificates and associate degrees awarded. In the event that a given program offers only a certificate or an associate degree, information describing the other type of award will not be shown.

Trends over a specified period of time are illustrated by the following graphs for Landscape Design (LAD)

- Ten-year trend showing the annual awards conferred in Landscape Design
- Rate of change in annual awards conferred in Landscape Design
- The three-year Moving Mean for annual awards conferred in Landscape Design
- Ten-year trend in awards conferred collegewide.

Questions regarding this report can be forwarded to the Office of Institutional Research at (248) 341-2123.

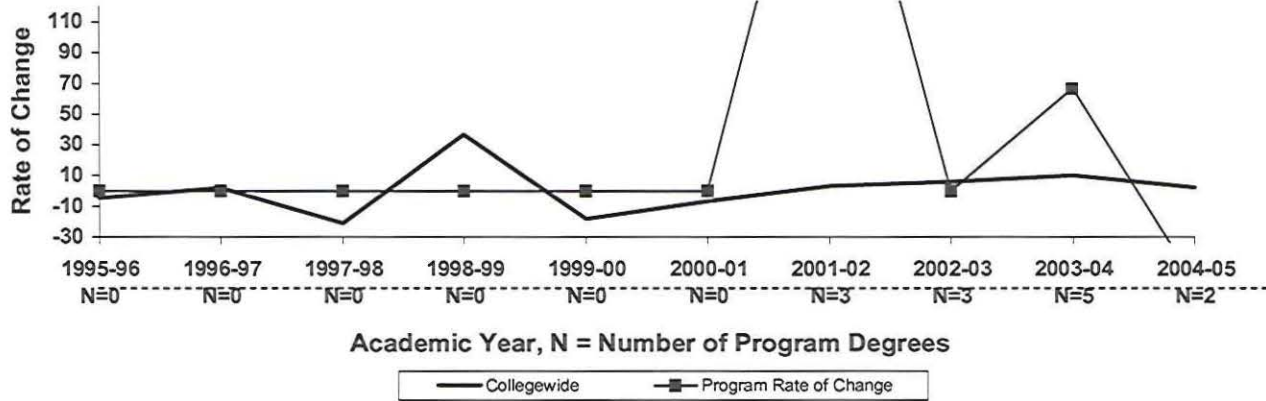
**Oakland Community College
Associate Degrees and Certificates Awarded
Landscape Design
1995-96 through 2004-05**



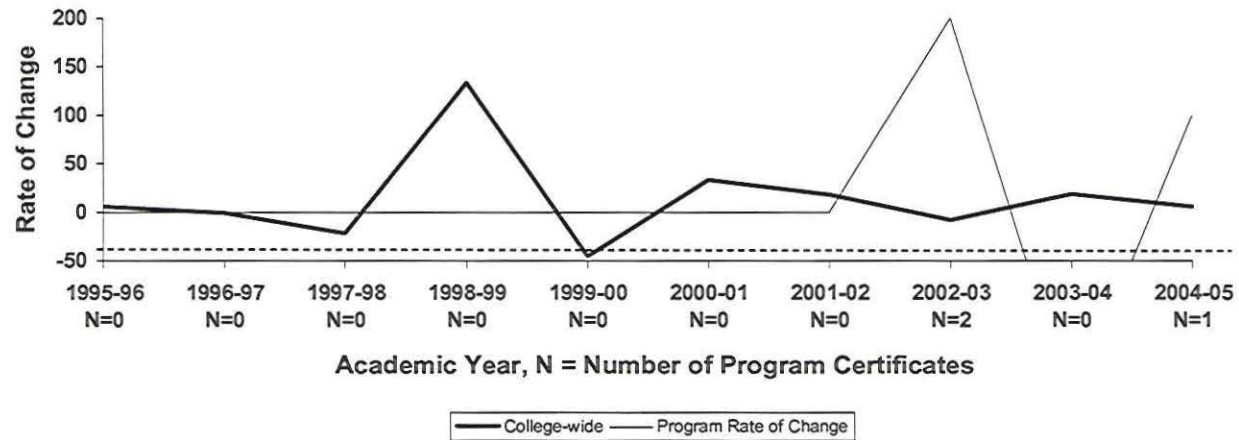
<u>Academic Yr.</u>	<u>Certificates</u>	<u>Associates</u>
1995-96	0	0
1996-97	0	0
1997-98	0	0
1998-99	0	0
1999-00	0	0
2000-01	0	0
2001-02	0	3
2002-03	2	3
2003-04	0	5
2004-05	1	2

**Oakland Community College
Rate of Change in Annual Awards
College-Wide
1995-96 through 2004-05**

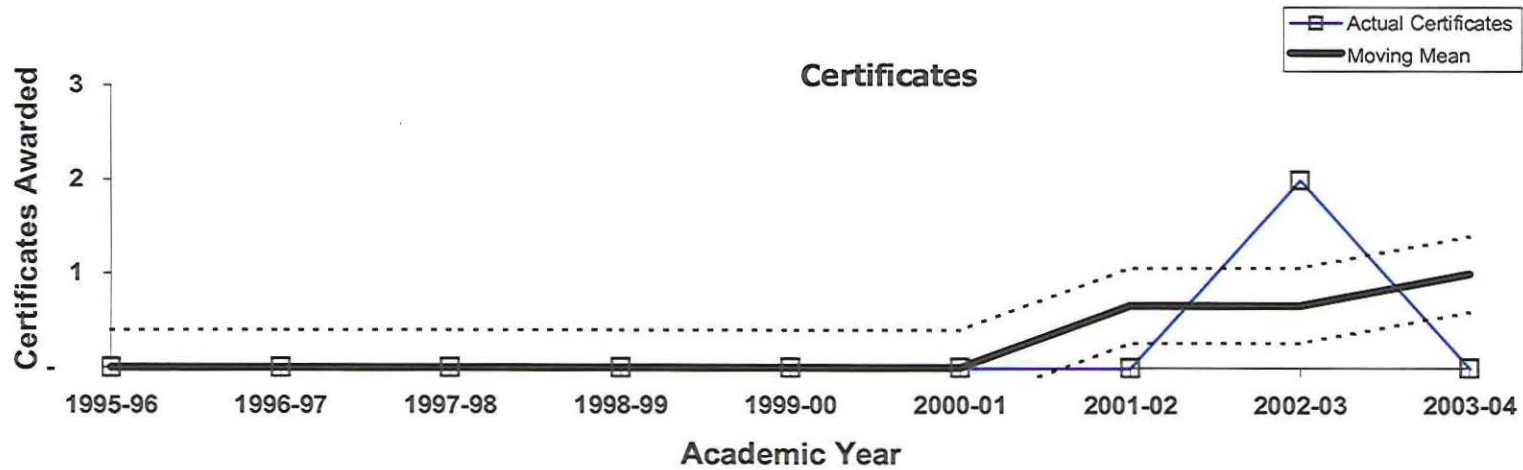
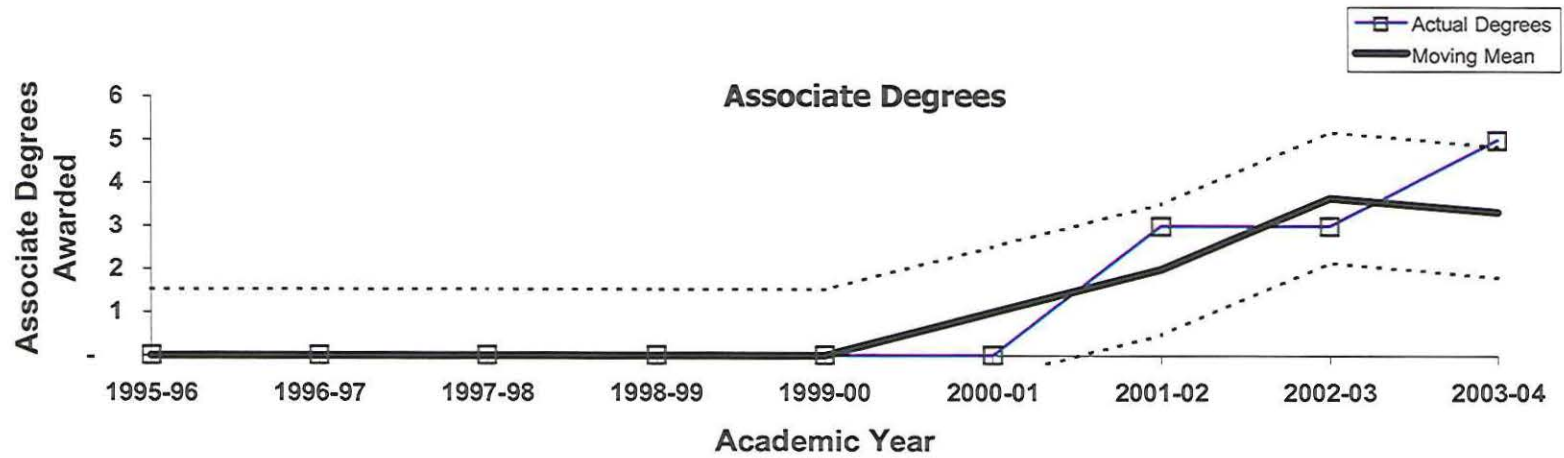
Associate Degrees



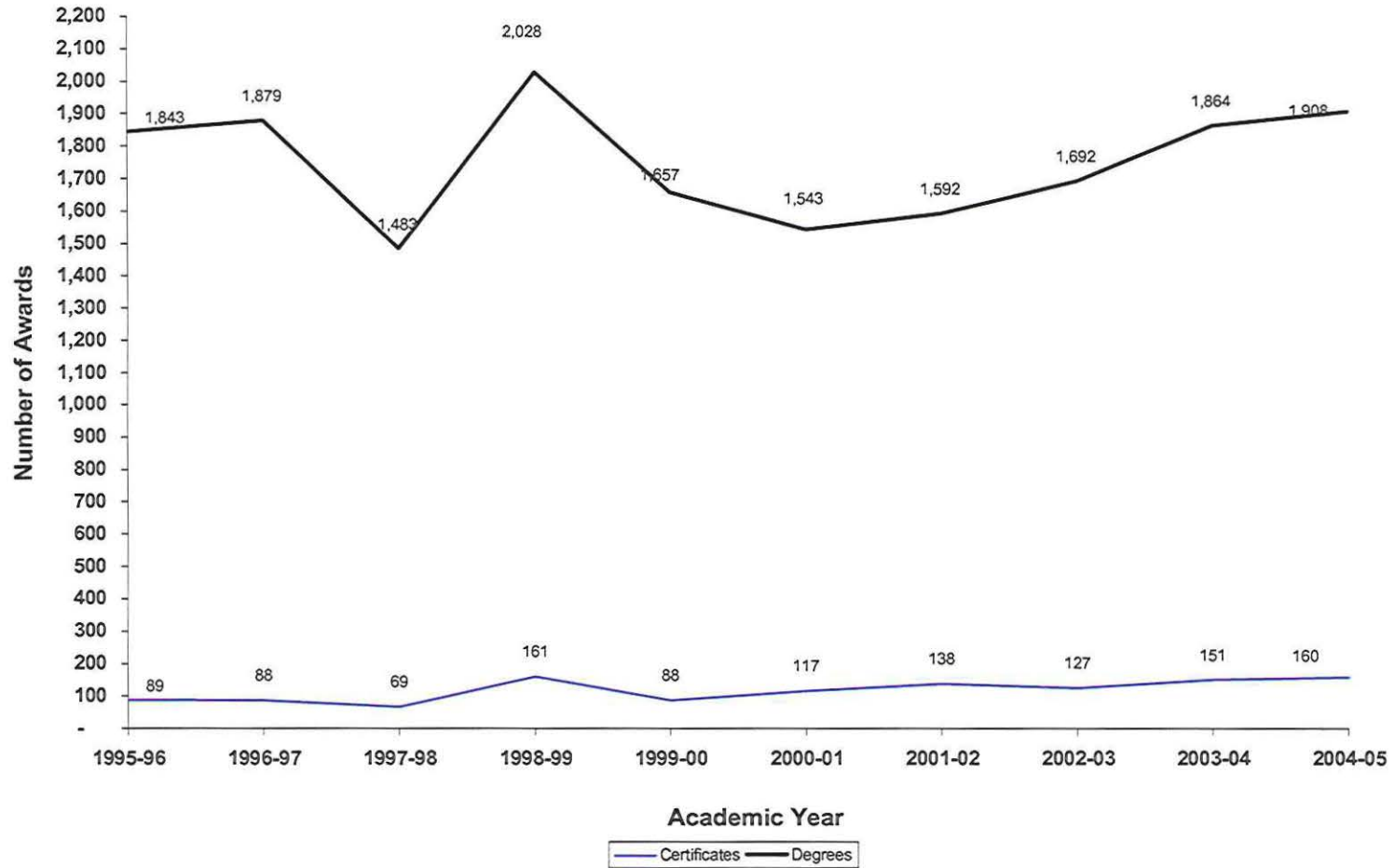
Certificates



**Oakland Community College
Three Year Moving Mean in Annual Awards
Landscape Design
1995-96 through 2003-04**



**Oakland Community College
Associate Degrees and Certificates Awarded
College-Wide
1995-96 through 2004-05**





OAKLAND
COMMUNITY
COLLEGE

Credit Hour Trends Report
Biology
BIO
2004-05

Prepared by:
Oakland Community College
Office of Institutional Research
March 10, 2006

**Oakland Community College
Credit Hour Trends Report
Biology
1994-95 through 2004-05**

Each year the Office of Institutional Research prepares the Credit Hour Trends Report, based on data submitted to the State of Michigan in the annual ACS-6 (Activities Classification Structure) process. This report is based on each course section's official count date (1/10th Day). The Credit Hour Trends Report examines annual (July 1 - June 30) enrollment trends of OCC disciplines, based on course prefix codes.

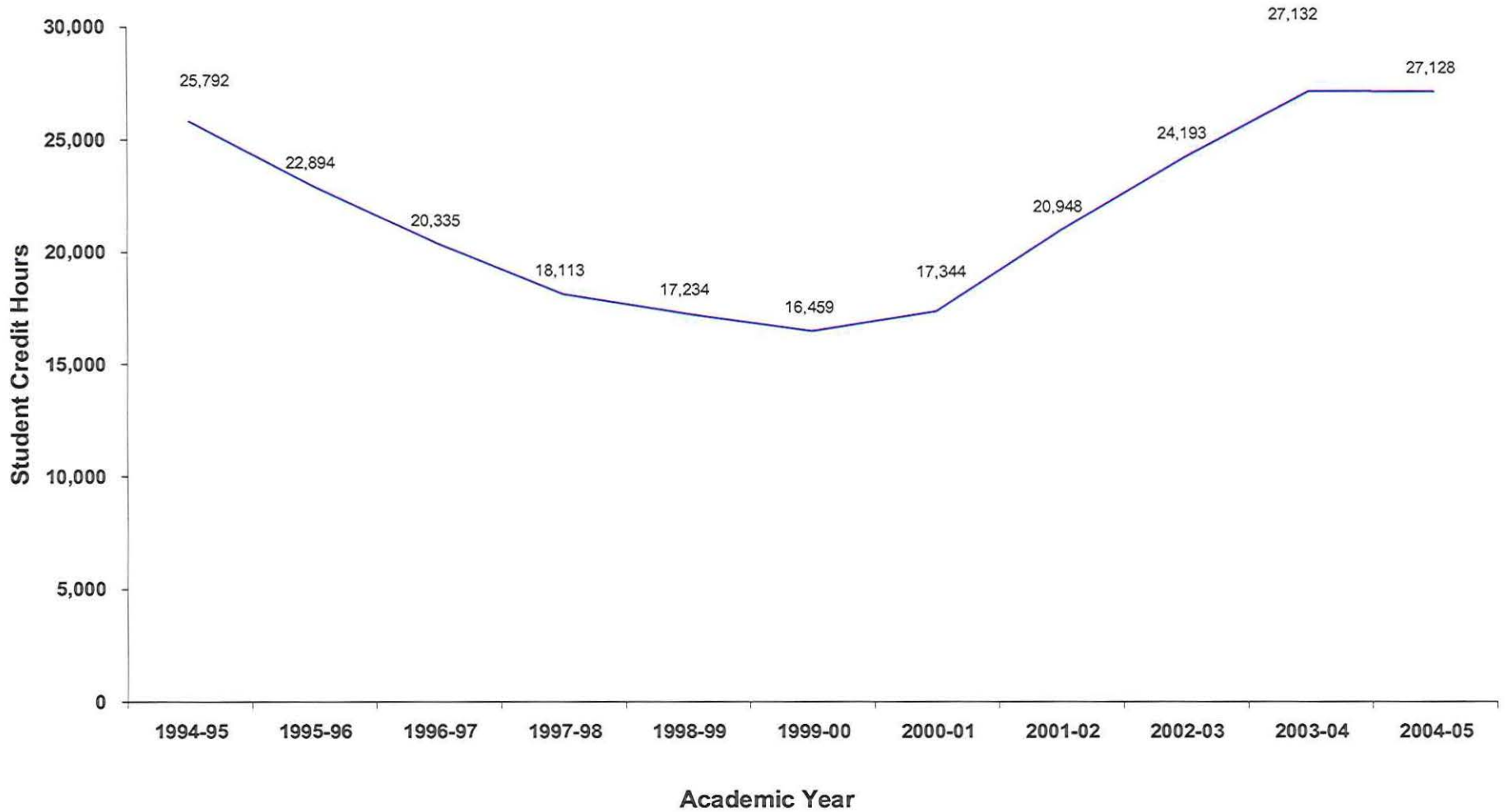
Trends over a specified period of time are illustrated by the following graphs for Biology.

- Graph depicting ten-year trend in student credit hours generated by Biology
- Graphs depicting three-year moving mean and rate of change in student credit hours for Biology.
- Ten-year trend in annual credit hours generated Collegewide.

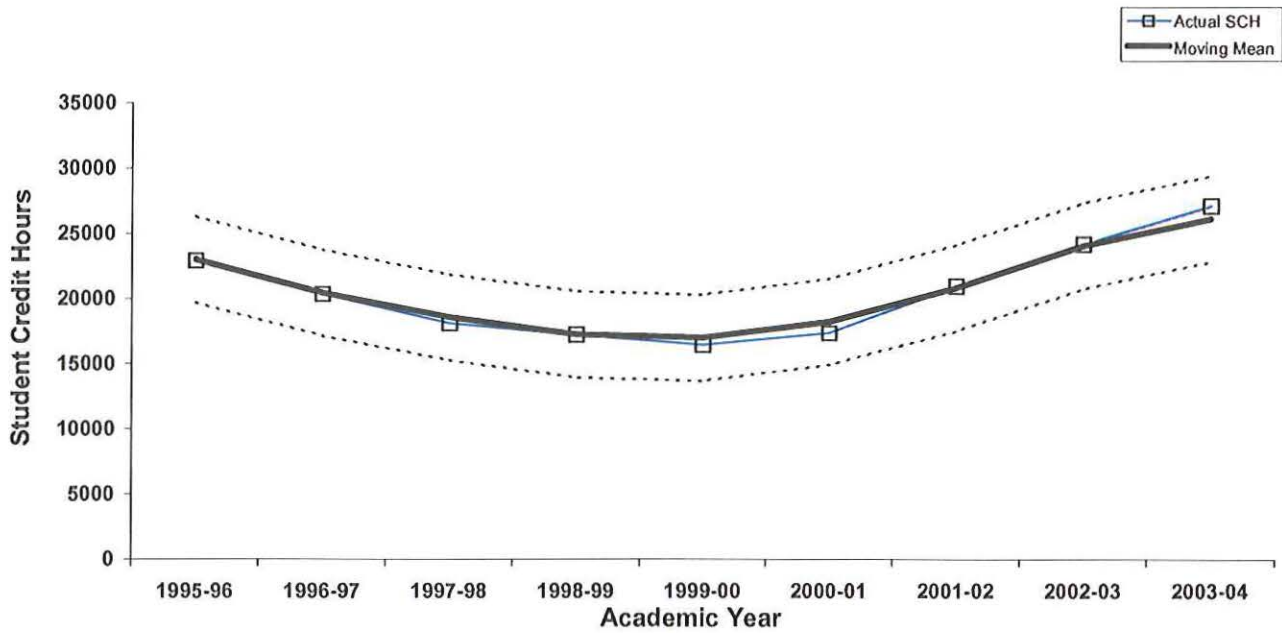
Questions regarding this report can be forwarded to the Office of Institutional Research at (248) 341-2123.

**Oakland Community College
Ten-Year Trend in Student Credit Hours
Biology
1994-95 through 2004-05**

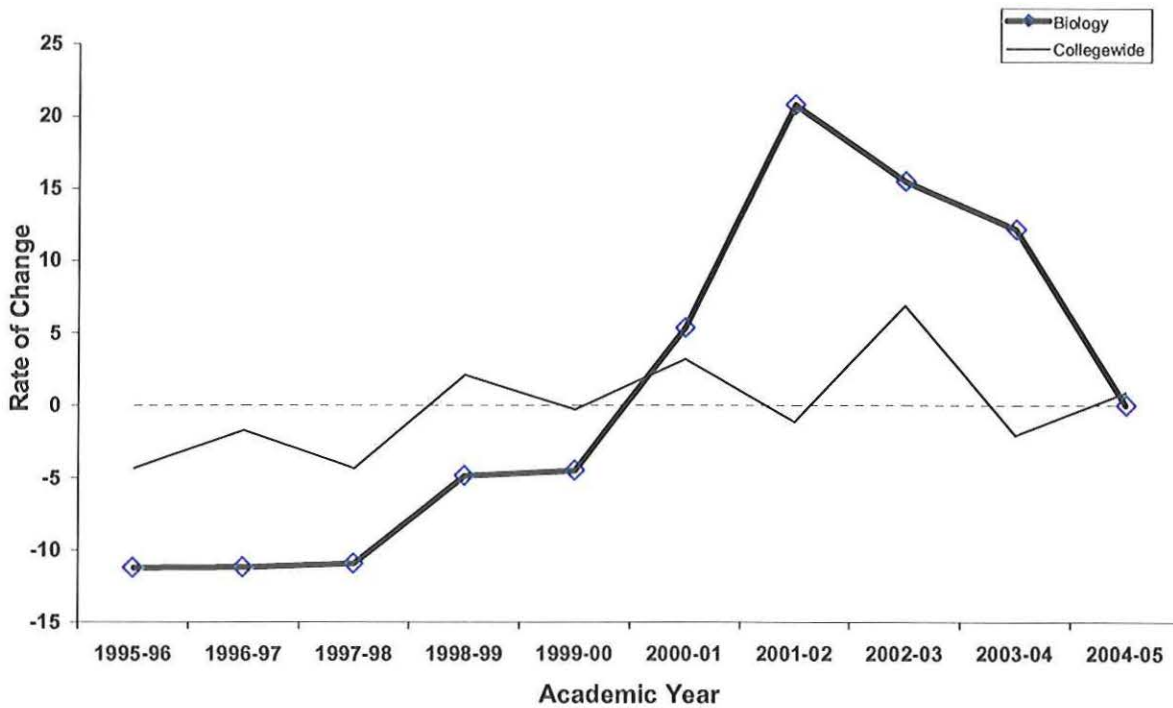
	1994-95 SCH	1995-96 SCH	1996-97 SCH	1997-98 SCH	1998-99 SCH	1999-00 SCH	2000-01 SCH	2001-02 SCH	2002-03 SCH	2003-04 SCH	2004-05 SCH	5-Year % Change	10-Year % Change
Biology	25,792	22,894	20,335	18,113	17,234	16,459	17,344	20,948	24,193	27,132	27,128	64.8	5.2
College Wide Totals	471,593	451,159	443,471	431,521	440,448	438,997	453,054	447,928	478,827	468,777	472,892	7.7	0.3



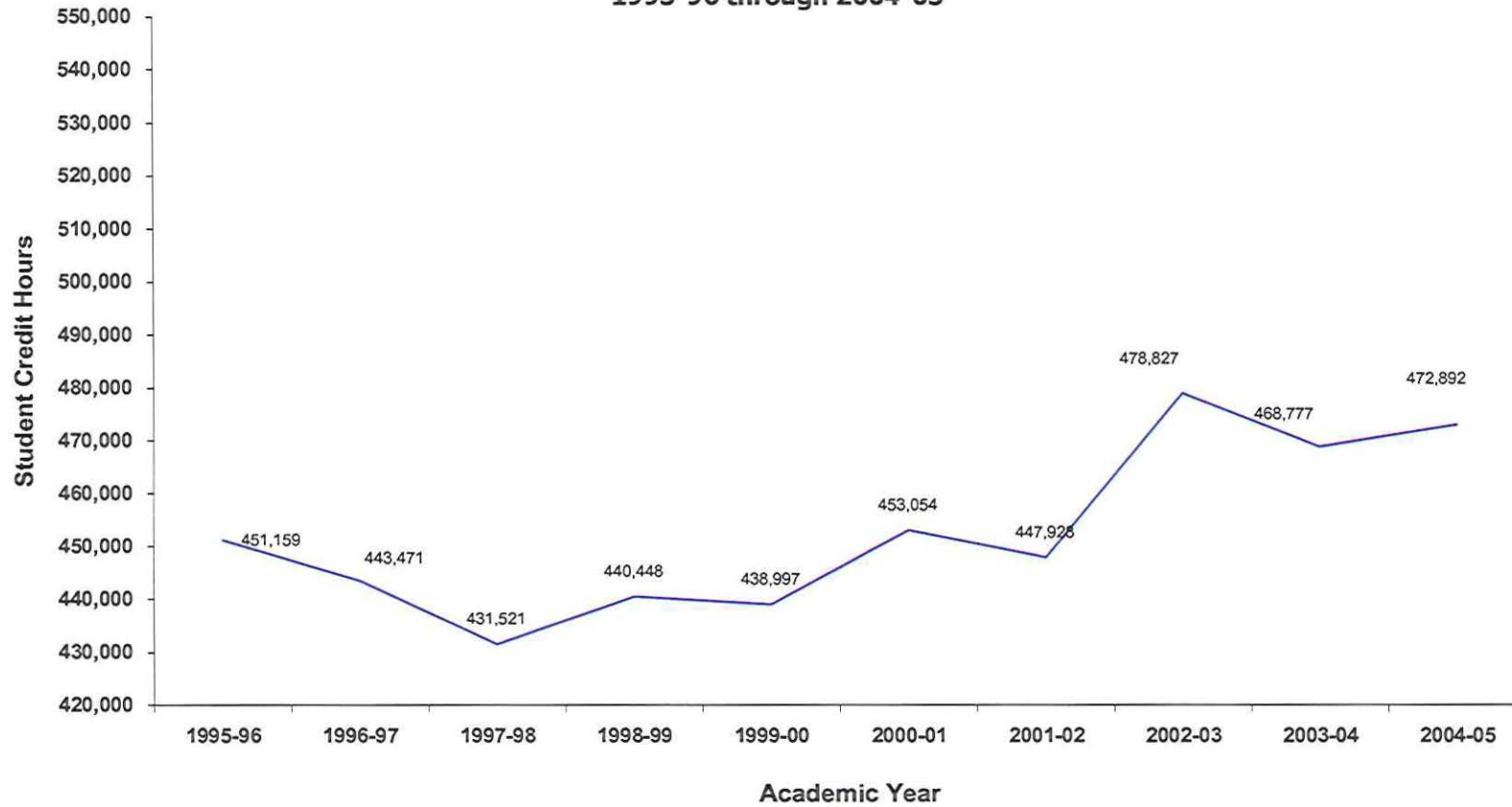
Oakland Community College
 Three-Year Moving Mean
 Biology
 1995-96 through 2003-04



Rate of Change in Student Credit Hours 1995-96 through 2004-05



**Oakland Community College
Ten-Year Trend in Student Credit Hours
College-Wide
1995-96 through 2004-05**



1995-96	1996-97	1997-98	1998-99	1999-00	2000-01	2001-02	2002-03	2003-04	2004-05
451,159	443,471	431,521	440,448	438,997	453,054	447,928	478,827	468,777	472,892



OAKLAND
COMMUNITY
COLLEGE

**Credit Hour Trends Report
Landscape Tech
LST
2004-05**

**Prepared by:
Oakland Community College
Office of Institutional Research
March 10, 2006**

**Oakland Community College
Credit Hour Trends Report
Landscape Tech
1994-95 through 2004-05**

Each year the Office of Institutional Research prepares the Credit Hour Trends Report, based on data submitted to the State of Michigan in the annual ACS-6 (Activities Classification Structure) process. This report is based on each course section's official count date (1/10th Day). The Credit Hour Trends Report examines annual (July 1 - June 30) enrollment trends of OCC disciplines, based on course prefix codes.

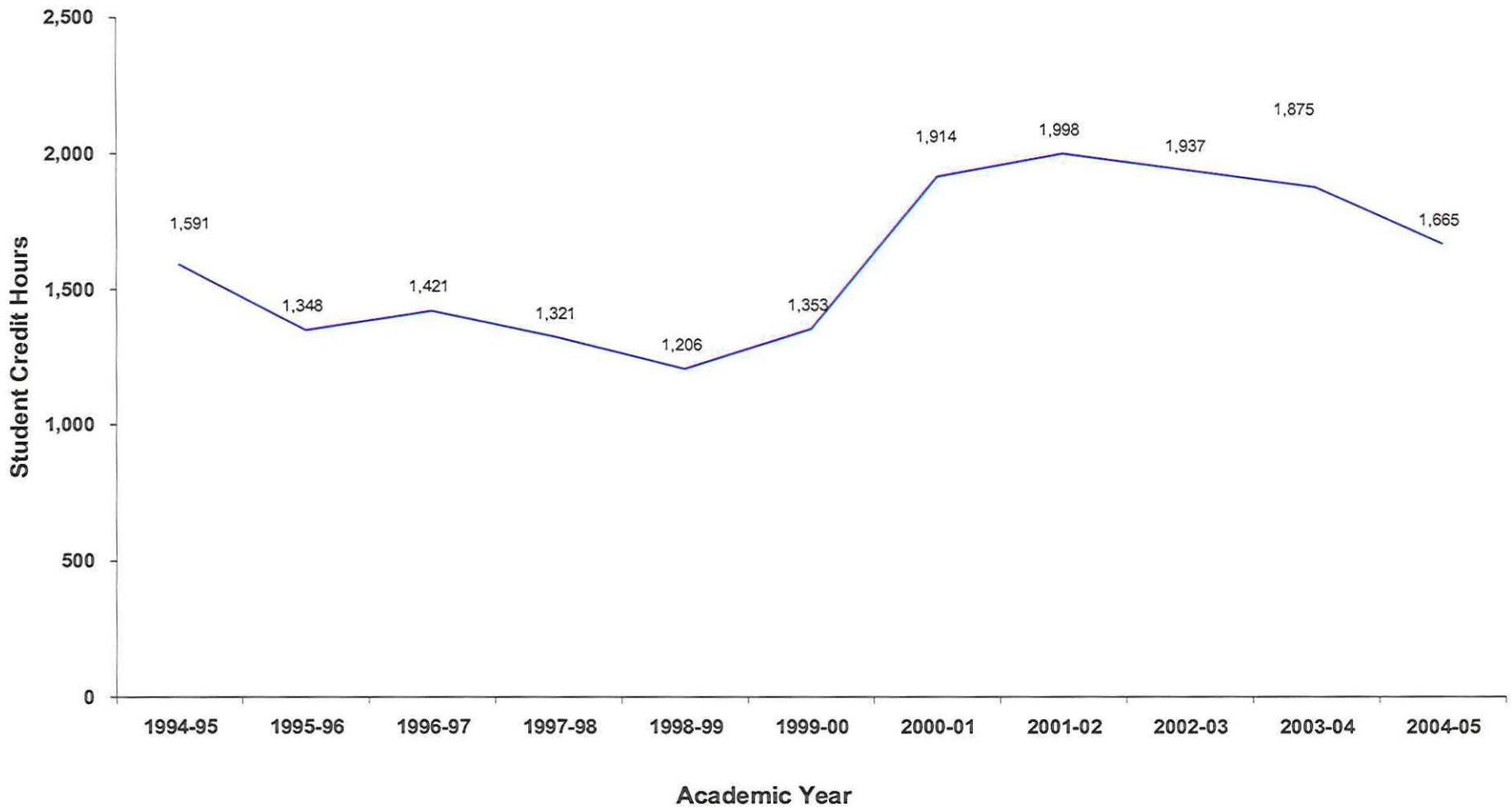
Trends over a specified period of time are illustrated by the following graphs for Landscape Tech.

- Graph depicting ten-year trend in student credit hours generated by Landscape Tech
- Graphs depicting three-year moving mean and rate of change in student credit hours for Landscape Tech.
- Ten-year trend in annual credit hours generated Collegewide.

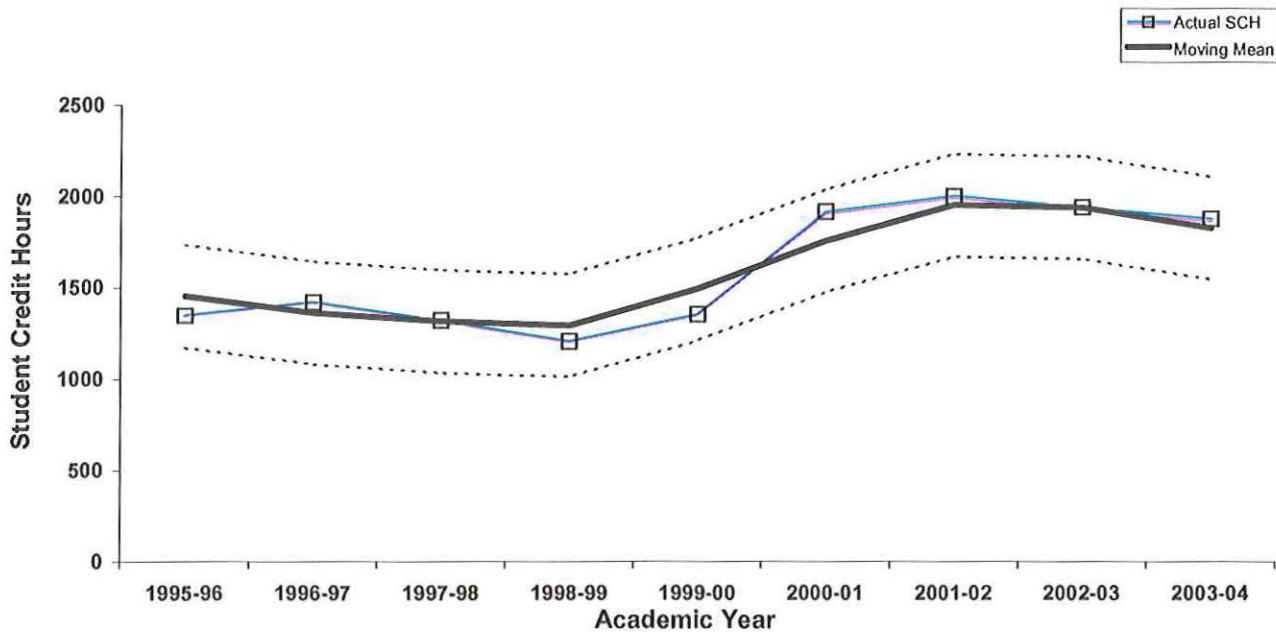
Questions regarding this report can be forwarded to the Office of Institutional Research at (248) 341-2123.

**Oakland Community College
Ten-Year Trend in Student Credit Hours
Landscape Tech
1994-95 through 2004-05**

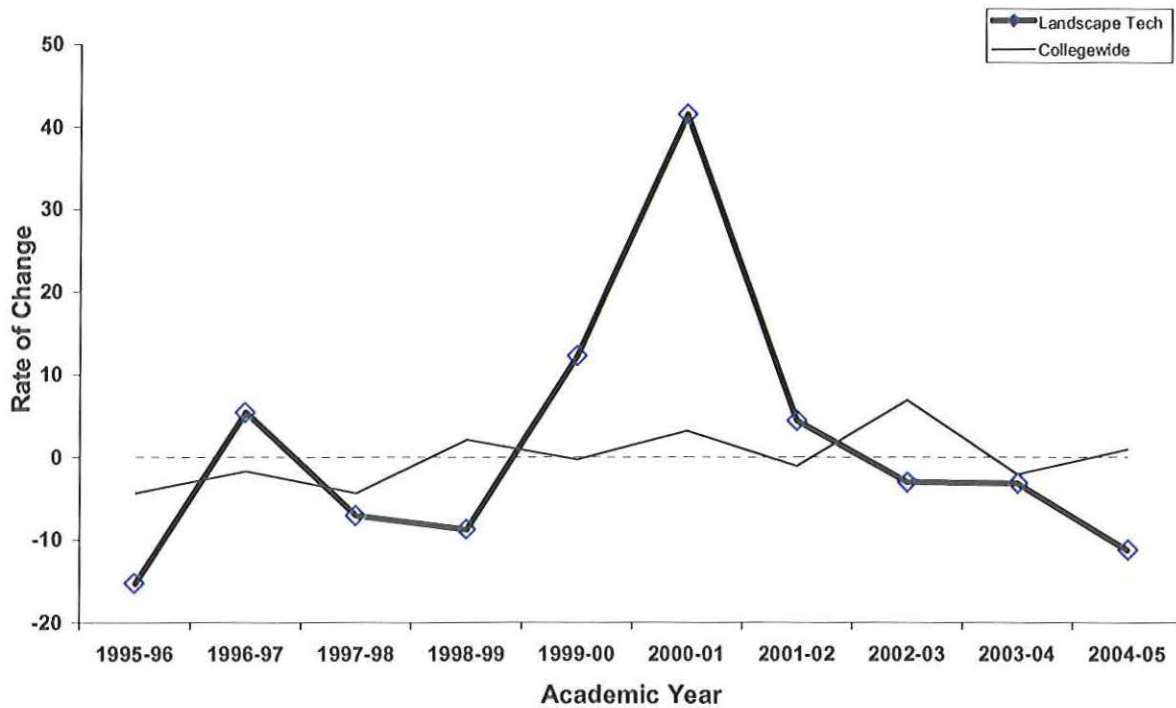
	1994-95 SCH	1995-96 SCH	1996-97 SCH	1997-98 SCH	1998-99 SCH	1999-00 SCH	2000-01 SCH	2001-02 SCH	2002-03 SCH	2003-04 SCH	2004-05 SCH	5-Year % Change	10-Year % Change
Landscape Tech	1,591	1,348	1,421	1,321	1,206	1,353	1,914	1,998	1,937	1,875	1,665	23.1	4.7
College Wide Totals	471,593	451,159	443,471	431,521	440,448	438,997	453,054	447,928	478,827	468,777	472,892	7.7	0.3



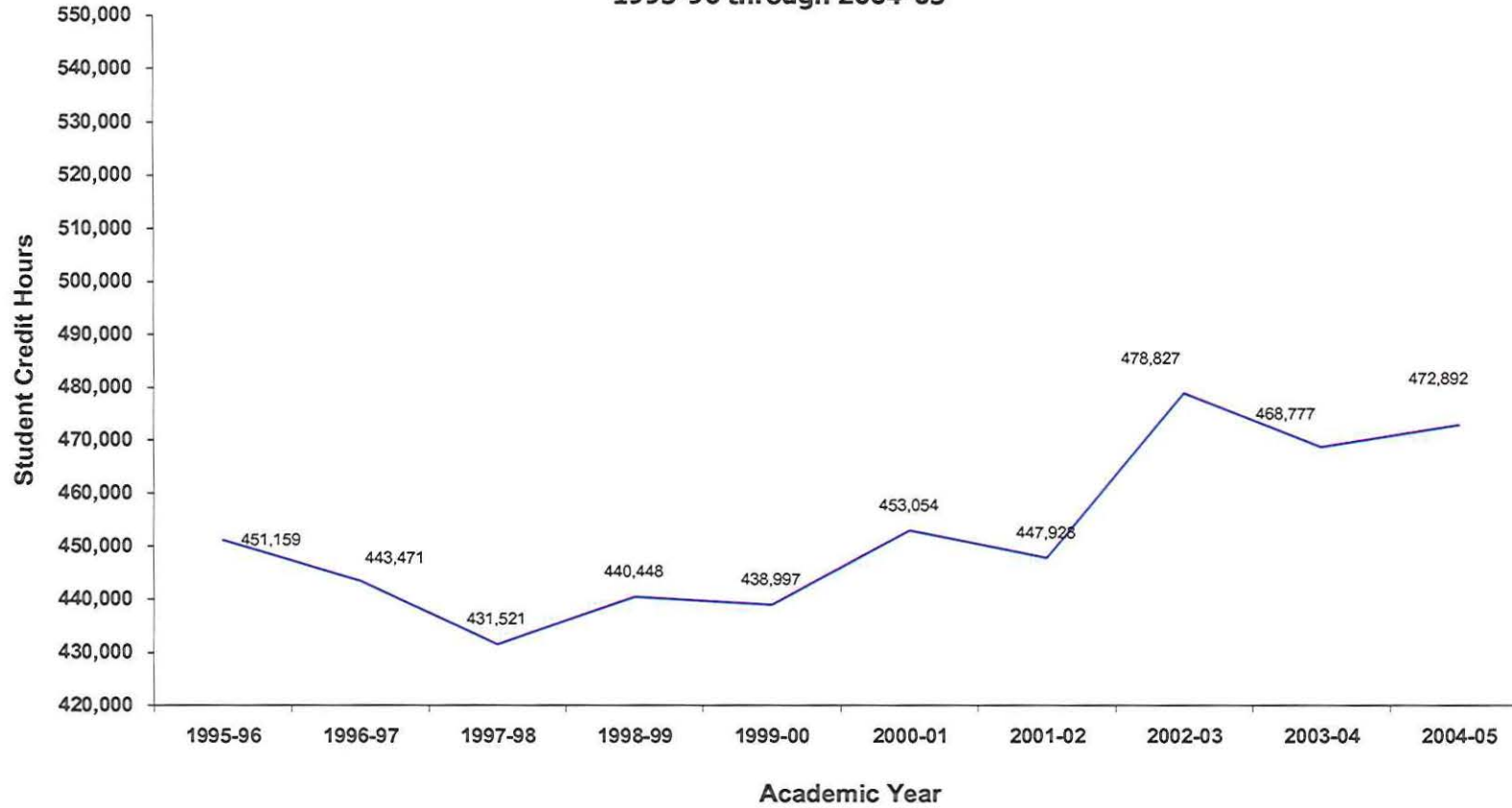
Oakland Community College
 Three-Year Moving Mean
 Landscape Tech
 1995-96 through 2003-04



Rate of Change in Student Credit Hours 1995-96 through 2004-05



**Oakland Community College
Ten-Year Trend in Student Credit Hours
College-Wide
1995-96 through 2004-05**



1995-96	1996-97	1997-98	1998-99	1999-00	2000-01	2001-02	2002-03	2003-04	2004-05
451,159	443,471	431,521	440,448	438,997	453,054	447,928	478,827	468,777	472,892