



Degree and Credit Hour Trends Report Worksheet

Requestor: <i>Marty Orlowski</i>	Curriculum to be Reviewed: <i>Sign Language Studies</i>	Due: <i>8/6/04</i>
Coordinator:		

Report to consist of the following:				
Degree Prefixes:				
Course Codes:	<i>SLS</i>			

Bookmarks:		
Intro Section:	<u>Program Title</u> Report for CRC	100%
	<u>Program Prefix</u> Table of Contents	100%
Degree Trends Section:	<u>Program Title</u> Degree Trends Report	100%
	<u>Program Prefix</u> Degree Trends Summary	100%
	<u>Program Prefix</u> Ten-Year Trend	100%
	<u>Program Prefix</u> Rate of Change	100%
	<u>Program Prefix</u> Three-Year Moving Mean	100%
	College-Wide Ten-Year Trend	100%
Credit Hour Trends Section:	<u>Course Title</u> Credit Hour Trends Report	100%
	<u>Course Code</u> Credit Hour Trends Summary	100%
	<u>Course Code</u> Ten-Year Trend	100%
	<u>Course Code</u> Three-Year Moving Mean	158%
	<u>Course Code</u> Rate of Change	158%
	College-Wide Ten-Year Trend	100%



OAKLAND
COMMUNITY
COLLEGE

**Credit Hour Trends Report
Sign Language Studies
SLS
2002-03**

**Prepared by:
Oakland Community College
Office of Institutional Research
August 6, 2004**

**Oakland Community College
Credit Hour Trends Report
Sign Language Studies
1993-94 through 2002-03**

Each year the Office of Institutional Research prepares the Credit Hour Trends Report, based on data submitted to the State of Michigan in the annual ACS-6 (Activities Classification Structure) process. This report is based on each course section's official count date (1/10th Day). The Credit Hour Trends Report examines annual (July 1 - June 30) enrollment trends of OCC disciplines, based on course prefix codes.

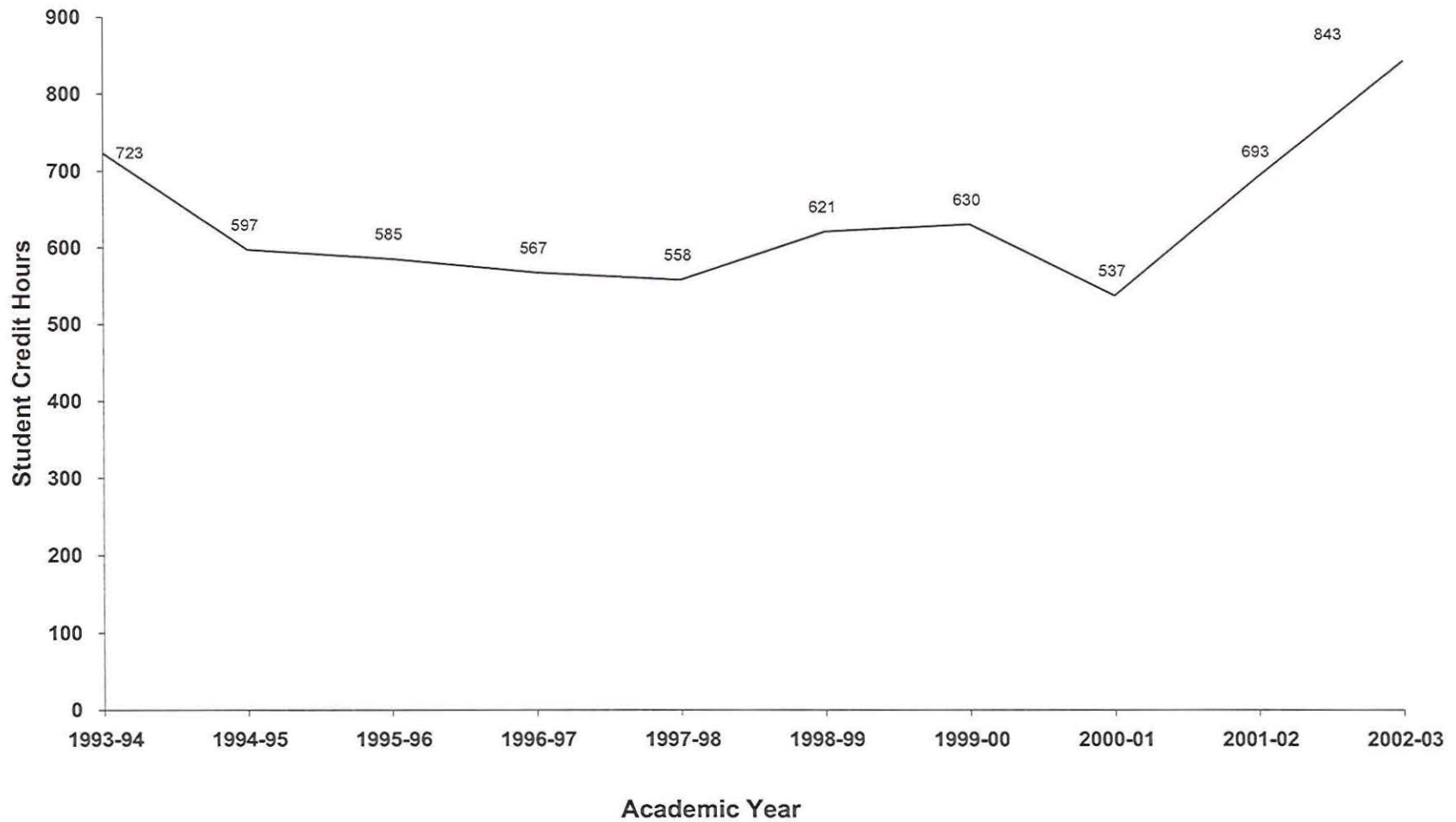
Trends over a specified period of time are illustrated by the following graphs for Sign Language Studies.

- Graph depicting ten-year trend in student credit hours generated by Sign Language Studies
- Graphs depicting three-year moving mean and rate of change in student credit hours for Sign Language Studies.
- Ten-year trend in annual credit hours generated Collegewide.

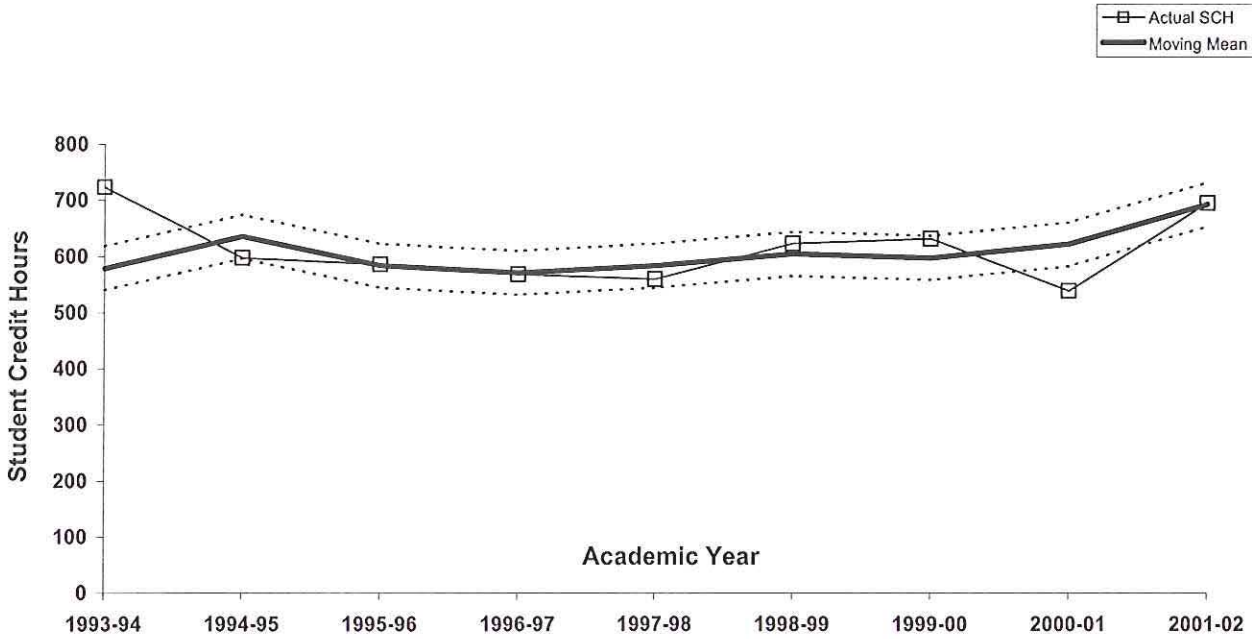
Questions regarding this report can be forwarded to the Office of Institutional Research at (248) 341-2123.

**Oakland Community College
Ten-Year Trend in Student Credit Hours
Sign Language Studies
1993-94 through 2002-03**

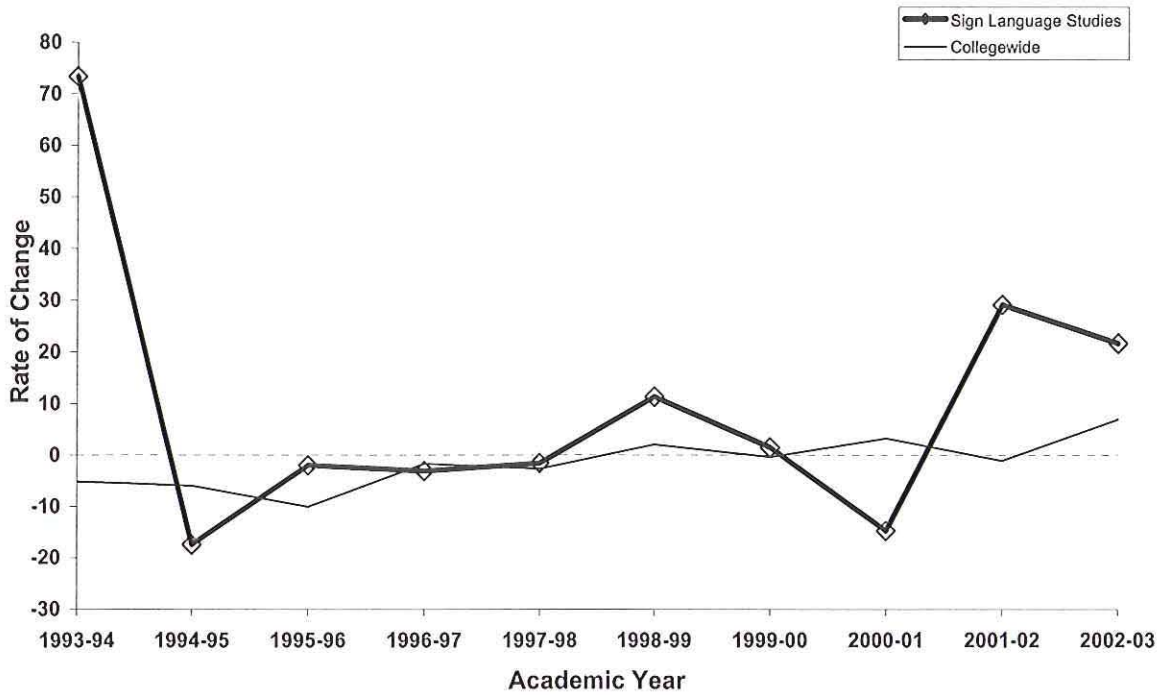
	1993-94 SCH	1994-95 SCH	1995-96 SCH	1996-97 SCH	1997-98 SCH	1998-99 SCH	1999-00 SCH	2000-01 SCH	2001-02 SCH	2002-03 SCH	5-Year % Change	10-Year % Change
Sign Language Studies	723	597	585	567	558	621	630	537	693	843	35.7	16.6
College Wide Totals	501,553	471,593	451,159	443,471	431,521	440,448	438,997	453,054	447,928	478,827	8.7	-4.5



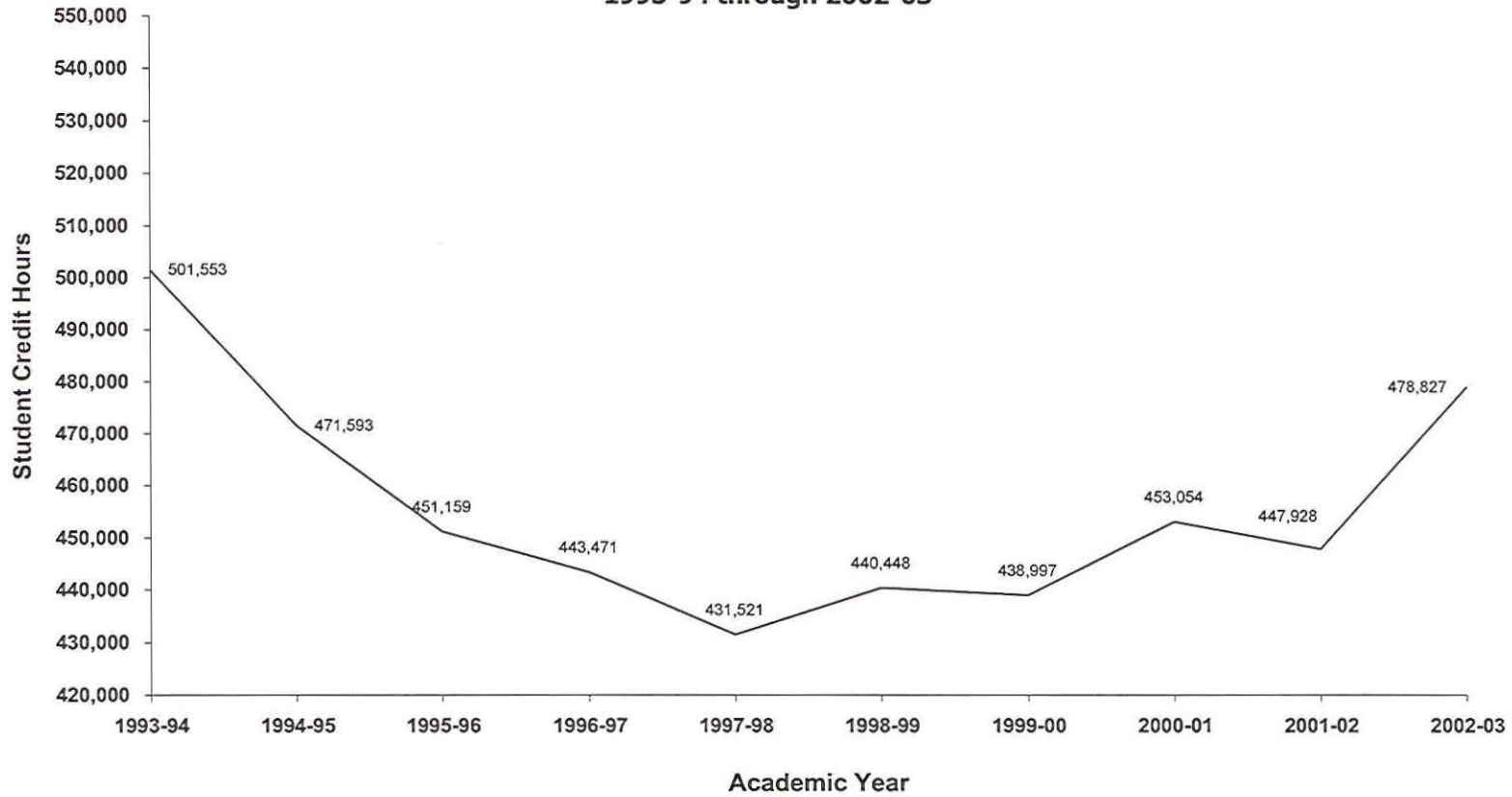
Oakland Community College
 Three-Year Moving Mean
 Sign Language Studies
 1993-94 through 2001-02



Rate of Change in Student Credit Hours 1993-94 through 2002-03



**Oakland Community College
Ten-Year Trend in Student Credit Hours
College-Wide
1993-94 through 2002-03**



1993-94	1994-95	1995-96	1996-97	1997-98	1998-99	1999-00	2000-01	2001-02	2002-03
501,553	471,593	451,159	443,471	431,521	440,448	438,997	453,054	447,928	478,827