

End of Session

Required Files: ITS REPORT SIS266

IR File

I:\Internal Reporting\Enrollment\Official Enrollment\Report\
(Term) Credit Hours Master Sheet.xls

Convert SIS266.txt file to Word Format
see EDS/FDOS instructions

OPEN (Term) Credit Hours Master Sheet.xls

STUDENT CREDIT HOURS

data per campus comes from page 9 of SIS266
note add BUS/Pub PF Insts to Auburn Hills

enter Credit and Total

copy formula for non-credit then use result to
check entry of previous step

HEAD COUNT

data per campus comes from page 3 of SIS266
note: combine BUS/Pub PF Insts with AH

data for OCC comes from page 11 of SIS266

CREDIT HOURS PER STUDENT

copy formulas over to calculate ratio
revise formulas on graph pages to reflect
current 7 years.

Create new file with EDS graphs and
forward it to designated research analyst.

**Oakland Community College
Official Enrollment
Fall Term**

College-Wide Totals

Credit Hours

	^E 2001	^F 2000	^G 1999	^H 1998	^I 1997	^J 1996	^K 1995	^L 1994
10 Projected	187,229	185,949	186,302	180,159	171,256	194,556	208,551	221,067
Actual First Day Enrollment	183,496	178,659	174,761	180,674	175,228	186,724	194,909	208,769
Actual One Tenth Day Enrollment	183,908	178,527	176,377	182,443	179,348	187,734	196,120	206,389
Actual End of Session (Credit)	184,760	179,957	177,759	183,261	180,471	186,689	199,443	208,551
Actual End of Session (Non Credit)	5,594	9,063	5,158	3,041	3,168	4,678	6,600	5,035
15 Actual End of Session Total	190,354	189,020	182,664	186,302	183,639	191,367	206,043	213,586

Headcount

	2001	2000	1999	1998	1997	1996	1995	1994
21 Projected Headcount	27,000	27,201	27,253	27,880	28,006	26,604	27,511	29,032
Actual First Day Enrollment	23,165	23,079	22,932	23,957	23,558	24,300	25,691	26,664
Actual One Tenth Day Enrollment	23,688	23,400	23,445	24,455	24,443	24,941	26,144	27,129
24 Actual End of Session (Credit)	23,811	23,619	23,611	24,566	24,684	25,178	25,950	27,647
Actual End of Session (Non Credit)	2,411	6,004	3,390	2,687	2,885	6,036	2,271	2,607
Actual End of Session Total	26,222	29,623	27,001	27,253	27,569	31,214	28,221	30,254

Credit Hours Per Student

	2001	2000	1999	1998	1997	1996	1995	1994
32 Actual First Day Enrollment Credit Hours	183,496	178,659	174,761	180,674	175,228	186,724	194,909	208,769
Actual First Day Enrollment Headcount	23,165	23,079	22,932	23,957	23,558	24,300	25,691	26,664
	7.92	7.74	7.62	7.54	7.44	7.68	7.59	7.83
36 Actual OneTenth Day Credit Hours	183,908	178,527	176,377	182,443	179,348	187,734	196,120	206,389
Actual OneTenth Day Headcount	23,688	23,400	23,445	24,455	24,443	24,941	26,144	27,129
Credit Hours Per Student /OneTenth	7.76	7.63	7.52	7.46	7.34	7.53	7.50	7.61
40 Actual EOS Credit Hours	190,354	189,020	182,664	186,302	183,639	191,367	206,043	213,586
Actual EOS Headcount	26,222	29,623	27,001	27,253	27,569	31,214	28,221	30,254
Credit Hours Per Student/EOS	7.26	6.38	6.77	6.84	6.66	6.13	7.30	7.06

Oakland Community College
Official Enrollment
Fall Term

Auburn Hills

Student Credit Hours

	E 2001	F 2000	G 1999	H 1998	I 1997	J 1996	K 1995	L 1994
10 Projected	61,999	61,574	61,692	60,945	56,520	64,028	68,772	75,546
Actual First Day Enrollment	57,810	57,410	55,751	58,688	59,439	61,019	63,985	68,004
Actual One Tenth Day Enrollment	57,195	56,899	55,840	58,756	60,451	60,873	64,048	67,603
Actual End of Session (Credit)	57,885	58,074	57,097	59,169	61,050	61,924	65,663	68,772
Actual End of Session (Non Credit)	4,520	8,025	3,972	2,523	1,858	1,688	3,532	1,869
Actual End of Session Total	62,405	66,099	61,069	61,692	62,908	63,612	69,195	70,641

Headcount

	2001	2000	1999	1998	1997	1996	1995	1994
20 Actual First Day Enrollment	8,143	8,207	8,162	8,697	8,813	8,779	9,257	9,785
Actual One Tenth Day Enrollment	8,197	8,258	8,266	8,785	9,021	8,923	9,362	9,878
23 Actual End of Session (Credit)	8,293	8,427	8,412	8,839	9,149	9,113	9,374	10,119
Actual End of Session (Non Credit)	1,897	5,414	1,881	2,268	2,012	4,463	1,230	1,837
Actual End of Session Total	10,190	13,841	10,293	11,107	11,161	13,576	10,604	11,956

Credit Hours Per Student

	2001	2000	1999	1998	1997	1996	1995	1994
30 Actual First Day Enrollment Credit Hours	57,810	57,410	55,751	58,688	59,439	61,019	63,985	68,004
Actual First Day Enrollment Headcount	8,143	8,207	8,162	8,697	8,813	8,779	9,257	9,785
Credit Hours Per Student/ FDS	7.10	7.00	6.83	6.75	6.74	6.95	6.91	6.95
Actual OneTenth Day Credit Hours	57,195	56,899	55,840	58,756	60,451	60,873	64,048	67,603
Actual OneTenth Day Headcount	8,197	8,258	8,266	8,785	9,021	8,923	9,362	9,878
Credit Hours Per Student /OneTenth	6.98	6.89	6.76	6.69	6.70	6.82	6.84	6.84
39 Actual EOS Credit Hours	62,405	66,099	61,069	61,692	62,908	63,612	69,195	70,641
Actual EOS Headcount	10,190	13,841	10,293	11,107	11,161	13,576	10,604	11,956
Credit Hours Per Student/EOS	6.12	4.78	5.93	5.55	5.64	4.69	6.53	5.91

10

Oakland Community College
 Official Enrollment
 Fall Term

Highland Lakes

Student Credit Hours

	<i>E</i> 2001	<i>F</i> 2000	<i>G</i> 1999	<i>H</i> 1998	<i>I</i> 1997	<i>J</i> 1996	<i>K</i> 1995	1994
Projected	28,364	28,171	28,224	27,476	26,159	29,918	31,873	33,049
Actual First Day Enrollment	28,054	26,968	27,486	28,089	27,145	29,690	30,644	32,177
Actual One Tenth Day Enrollment	28,220	26,842	27,215	28,145	27,285	29,487	30,769	31,686
Actual End of Session (Credit)	28,199	26,866	27,229	28,224	27,524	29,513	31,001	31,873
Actual End of Session (Non Credit)	0	1	0	0	60	12	50	0
Actual End of Session Total	28,199	26,867	27,229	28,224	27,584	29,525	31,051	31,873

Headcount

	2001	2000	1999	1998	1997	1996	1995	1994
Actual First Day Enrollment	3,921	3,944	3,985	4,148	4,012	4,199	4,566	4,763
Actual One Tenth Day Enrollment	3,999	3,964	3,980	4,179	4,084	4,281	4,589	4,841
Actual End of Session (Credit)	4,008	3,972	3,990	4,193	4,145	4,301	4,548	4,889
Actual End of Session (Non Credit)	0	5	0	0	109	193	81	34
Actual End of Session Total	4,008	3,977	3,990	4,193	4,254	4,494	4,629	4,923

Credit Hours Per Student

	2001	2000	1999	1998	1997	1996	1995	1994
Actual First Day Enrollment Credit Hours	28,054	26,968	27,486	28,089	27,145	29,690	30,644	32,177
Actual First Day Enrollment Headcount	3,921	3,944	3,985	4,148	4,012	4,199	4,566	4,763
Credit Hours Per Student/ FDS	7.15	6.84	6.90	6.77	6.77	7.07	6.71	6.76
Actual OneTenth Day Credit Hours	28,220	26,842	27,215	28,145	27,285	29,487	30,769	31,686
Actual OneTenth Day Headcount	3,999	3,964	3,980	4,179	4,084	4,281	4,589	4,841
Credit Hours Per Student /OneTenth	7.06	6.77	6.84	6.73	6.68	6.89	6.70	6.55
Actual EOS Credit Hours	28,199	26,867	27,229	28,224	27,584	29,525	31,051	31,873
Actual EOS Headcount	4,008	3,977	3,990	4,193	4,254	4,494	4,629	4,923
Credit Hours Per Student/EOS	7.04	6.76	6.82	6.73	6.48	6.57	6.71	6.47

20

23

30

39

105

Oakland Community College
Official Enrollment
Fall Term

Orchard Ridge

Student Credit Hours

	2001	2000	1999	1998	1997	1996	1995	1994
Projected	51,052	50,703	50,799	48,287	45,509	52,610	58,541	62,100
Actual First Day Enrollment	51,987	50,570	48,209	49,487	46,969	50,325	53,575	58,574
Actual One Tenth Day Enrollment	52,144	50,756	48,985	50,446	48,192	51,237	53,791	57,889
Actual End of Session (Credit)	52,276	50,829	48,989	50,448	48,371	49,806	53,911	58,541
End of Session (Non Credit)	818	749	496	351	762	965	997	1,520
End of Session Total	53,094	51,578	49,485	50,799	49,133	50,771	54,908	60,061

Headcount

20

23

	2001	2000	1999	1998	1997	1996	1995	1994
Actual First Day Enrollment	7,364	7,342	6,976	7,275	6,931	7,048	7,496	7,998
Actual One Tenth Day Enrollment	7,552	7,442	7,181	7,511	7,209	7,282	7,757	8,145
Actual End of Session (Credit)	7,575	7,464	7,184	7,513	7,252	7,281	7,557	8,178
End of Session (Non Credit)	486	552	358	345	595	793	806	701
End of Session Total	8,061	8,016	7,542	7,858	7,847	8,074	8,363	8,879

Credit Hours Per Student

39

	2001	2000	1999	1998	1997	1996	1995	1994
Actual First Day Enrollment Credit Hours	51,987	50,570	48,209	49,487	46,969	50,325	53,575	58,574
Actual First Day Enrollment Headcount	7,364	7,342	6,976	7,275	6,931	7,048	7,496	7,998
Credit Hours Per Student/ FDS	7.06	6.89	6.91	6.80	6.78	7.14	7.15	7.32
Actual OneTenth Day Credit Hours	52,144	50,756	48,985	50,446	48,192	51,237	53,791	57,889
Actual OneTenth Day Headcount	7,552	7,442	7,181	7,511	7,209	7,282	7,757	8,145
Credit Hours Per Student /OneTenth	6.90	6.82	6.82	6.72	6.68	7.04	6.93	7.11
Actual EOS Credit Hours	53,094	51,578	49,485	50,799	49,133	50,771	54,908	60,061
Actual EOS Headcount	8,061	8,016	7,542	7,858	7,847	8,074	8,363	8,879
Credit Hours Per Student/EOS	6.59	6.43	6.56	6.46	6.26	6.29	6.57	6.76

140

Oakland Community College
 Official Enrollment
 Fall Term

Royal Oak

Student Credit Hours

	2001	2000	1999	1998	1997	1996	1995	1994
Projected	35,130	34,890	34,956	32,607	30,923	33,500	35,049	35,764
Actual First Day Enrollment	34,666	32,952	33,317	34,372	31,477	33,043	33,336	34,977
Actual One Tenth Day Enrollment	34,896	33,095	33,879	34,716	32,554	33,362	33,748	34,455
Actual End of Session (Credit)	34,922	33,262	33,885	34,956	32,663	33,371	35,104	34,609
Actual End of Session (Non Credit)	0	0	0	0	0	2,012	2,022	1,647
Actual End of Session Total	34,922	33,262	33,885	34,956	32,663	35,383	37,126	36,256

Headcount

20

23

	2001	2000	1999	1998	1997	1996	1995	1994
Actual First Day Enrollment	5,923	5,685	5,804	6,013	5,595	5,880	6,044	6,086
Actual One Tenth Day Enrollment	6,088	5,778	5,993	6,131	5,868	6,025	6,148	6,221
Actual End of Session (Credit)	6,101	5,806	5,999	6,160	5,878	6,041	6,115	6,429
Actual End of Session (Non Credit)	0	0	0	0	0	49	302	263
Actual End of Session Total	6,101	5,806	5,999	6,160	5,878	6,090	6,417	6,692

Credit Hours Per Student

39

	2001	2000	1999	1998	1997	1996	1995	1994
Actual First Day Enrollment Credit Hours	34,666	32,952	33,317	34,372	31,477	33,043	33,336	34,977
Actual First Day Enrollment Headcount	5,923	5,685	5,804	6,013	5,595	5,880	6,044	6,086
Credit Hours Per Student/ FDS	5.85	5.80	5.74	5.72	5.63	5.62	5.52	5.75
Actual OneTenth Day Credit Hours	34,896	33,095	33,879	34,716	32,554	33,362	33,748	34,455
Actual OneTenth Day Headcount	6,088	5,778	5,993	6,131	5,868	6,025	6,148	6,221
Credit Hours Per Student /OneTenth	5.73	5.73	5.65	5.66	5.55	5.54	5.49	5.54
Actual EOS Credit Hours	34,922	33,262	33,885	34,956	32,663	35,383	37,126	36,256
Actual EOS Headcount	6,101	5,806	5,999	6,160	5,878	6,090	6,417	6,692
Credit Hours Per Student/EOS	5.72	5.73	5.65	5.67	5.56	5.81	5.79	5.42

175

Oakland Community College
 Official Enrollment
 Fall Term

Southfield

Student Credit Hours

	E 2001	F 2000	G 1999	H 1998	I 1997	J 1996	K 1995	1994
Projected	10,684	10,611	10,631	10,844	12,145	14,500	14,316	14,608
Actual First Day Enrollment	10,980	10,759	9,998	10,038	10,199	12,648	13,369	15,037
Actual One Tenth Day Enrollment	11,454	10,935	10,458	10,380	10,866	12,776	13,764	14,756
Actual End of Session (Credit)	11,478	10,926	10,559	10,464	10,863	12,075	13,764	14,756
Actual End of Session (Non Credit)	256	288	437	167	488	0	0	0
Actual End of Session Total	11,734	11,214	10,996	10,631	11,351	12,075	13,764	14,756

Headcount

	2001	2000	1999	1998	1997	1996	1995	1994
Actual First Day Enrollment	2,008	1,915	1,917	1,894	1,897	2,293	2,397	2,520
Actual One Tenth Day Enrollment	2,143	1,975	2,026	1,984	2,036	2,414	2,444	2,617
Actual End of Session (Credit)	2,147	1,978	2,037	1,996	2,036	2,444	2,299	2,617
Actual End of Session (Non Credit)	32	35	119	76	174	563	0	0
Actual End of Session Total	2,179	2,013	2,156	2,072	2,210	3,007	2,299	2,617

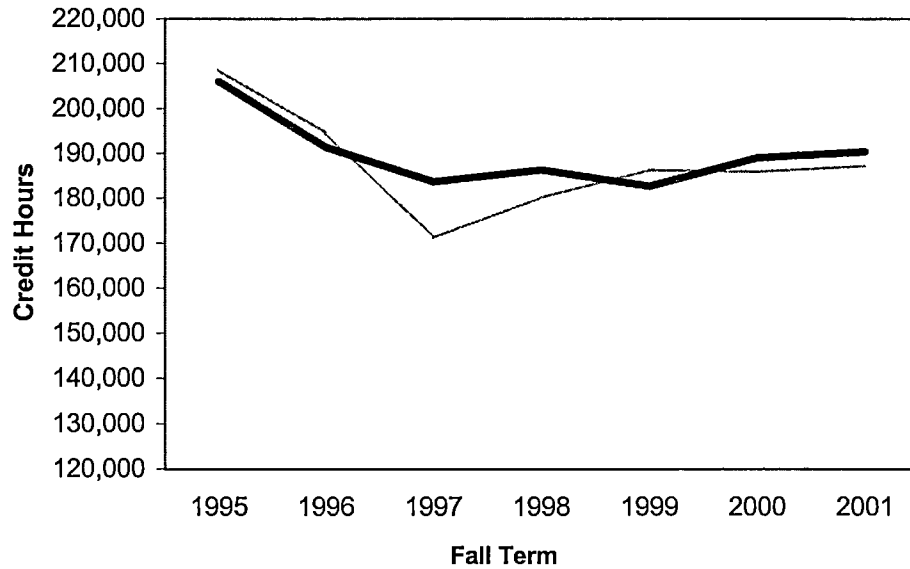
Credit Hours Per Student

	2001	2000	1999	1998	1997	1996	1995	1994
Actual First Day Enrollment Credit Hours	10,980	10,759	9,998	10,038	10,199	12,648	13,369	15,037
Actual First Day Enrollment Headcount	2,008	1,915	1,917	1,894	1,897	2,293	2,397	2,520
Credit Hours Per Student/ FDS	5.47	5.62	5.22	5.30	5.38	5.52	5.58	5.97
Actual OneTenth Day Credit Hours	11,454	10,935	10,458	10,380	10,866	12,776	13,764	14,756
Actual OneTenth Day Headcount	2,143	1,975	2,026	1,984	2,036	2,414	2,444	2,617
Credit Hours Per Student /OneTenth	5.34	5.54	5.16	5.23	5.34	5.29	5.63	5.64
Actual EOS Credit Hours	11,734	11,214	10,996	10,631	11,351	12,075	13,764	14,756
Actual EOS Headcount	2,179	2,013	2,156	2,072	2,210	3,007	2,299	2,617
Credit Hours Per Student/EOS	5.39	5.57	5.10	5.13	5.14	4.02	5.99	5.64

**Oakland Community College
Official Enrollment Report
End of Session, Fall 2001
College-wide - Student Credit Hours**

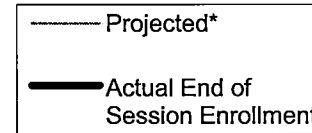
	<u>1995</u>	<u>1996</u>	<u>1997</u>	<u>1998</u>	<u>1999</u>	<u>2000</u>	<u>2001</u>	<u>1 Year % Change</u>	<u>5 Year % Change</u>
Projected*	208,551	194,556	171,256	180,159	186,302	185,949	187,229	0.7%	9.3%
Actual End of Session Enrollment	206,043	191,367	183,639	186,302	182,664	189,020	190,354	0.7%	3.7%
% of Projected	98.8%	98.4%	107.2%	103.4%	98.0%	101.7%	101.7%		
Actual End of Session (Credit)	199,443	186,689	180,471	183,261	177,759	179,957	184,760	2.7%	2.4%
Actual End of Session (Non Credit)	6,600	4,678	3,168	3,041	5,158	9,063	5,594	-38.3%	76.6%

**Actual End of Session Enrollment
Compared to Projections**



Analysis

Credit hours, as of the end of the Fall 2000 session, are at 101.7% of projections. In comparison to the end of the Fall 1999 session, credit hours were up 3.5%. The five year percentage of change is down 1.2%.

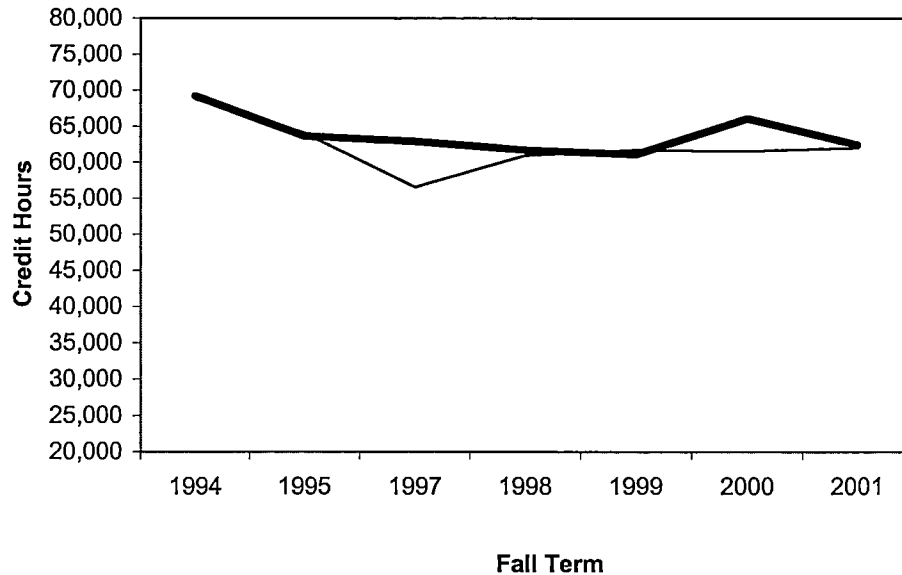


*Projections include credit, as well as non-credit courses and reflect estimated end of session targets.

**Oakland Community College
Official Enrollment Report
End of Session, Fall 2001
Auburn Hills - Student Credit Hours**

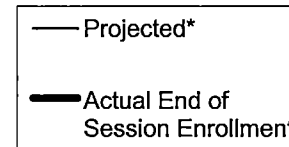
	<u>1994</u>	<u>1995</u>	<u>1997</u>	<u>1998</u>	<u>1999</u>	<u>2000</u>	<u>2001</u>	<u>1 Year % Change</u>	<u>5 Year % Change</u>
Projected*	68,772	64,028	56,520	60,945	61,692	61,574	61,999	0.7%	9.7%
Actual End of Session Enrollment	69,195	63,612	62,908	61,692	61,069	66,099	62,405	-5.6%	-0.8%
% of Projected	100.6%	99.4%	111.3%	101.2%	99.0%	107.3%	100.7%		
Actual End of Session (Credit)	65,663	61,924	61,050	59,169	57,097	58,074	57,885	-0.3%	-5.2%
Actual End of Session (Non Credit)	3,532	1,688	1,858	2,523	3,972	8,025	4,520	-43.7%	143.3%

**Actual End of Session Enrollment
Auburn Hills**



Analysis

Credit hours, as of the end of the Fall 2000 session, are at 107.3% of projections. In comparison to the end of the Fall 1999 session, credit hours were up 8.2%. The five year percentage of change is up 3.9%.

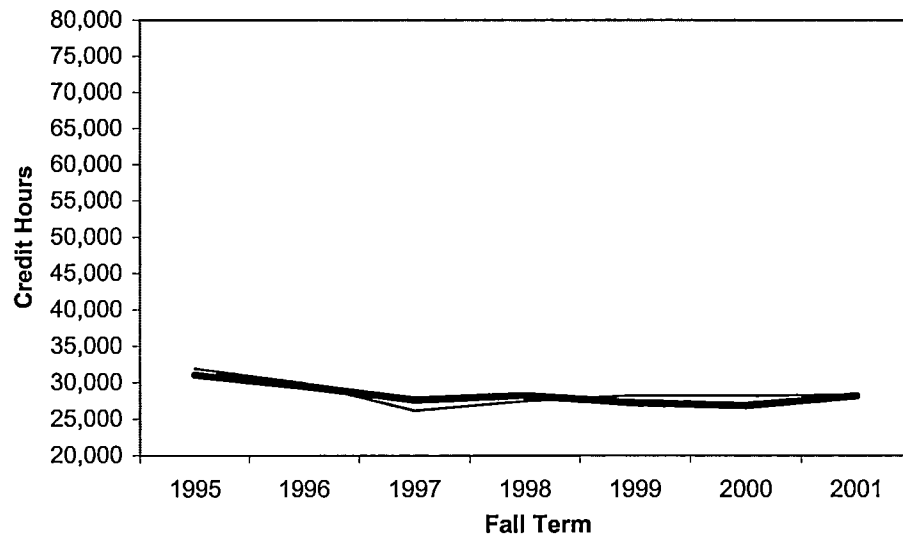


*Projections include credit, as well as non-credit courses and reflect estimated end of session targets.

**Oakland Community College
Official Enrollment Report
End of Session, Fall 2001
Highland Lakes - Student Credit Hours**

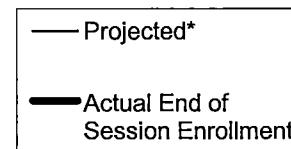
	<u>1995</u>	<u>1996</u>	<u>1997</u>	<u>1998</u>	<u>1999</u>	<u>2000</u>	<u>2001</u>	<u>1 Year % Change</u>	<u>5 Year % Change</u>
Projected*	31,873	29,918	26,159	27,476	28,224	28,171	28,364	0.7%	8.4%
Actual End of Session Enrollment	31,051	29,525	27,584	28,224	27,229	26,867	28,199	5.0%	2.2%
% of Projected	97.4%	98.7%	105.4%	102.7%	96.5%	95.4%	99.4%		
Actual End of Session (Credit)	31,001	29,513	27,524	28,224	27,229	26,866	28,199	5.0%	2.5%
Actual End of Session (Non Credit)	50	12	60	0	0	1	0	-100.0%	-100.0%

**Actual End of Session Enrollment
Highland Lakes**



Analysis

Credit hours, as of the end of the Fall 2000 session, are at 95.4% of projections. In comparison to the end of the Fall 1999 session, credit hours were down 1.3%. The five year percentage of change is down 9.0%.

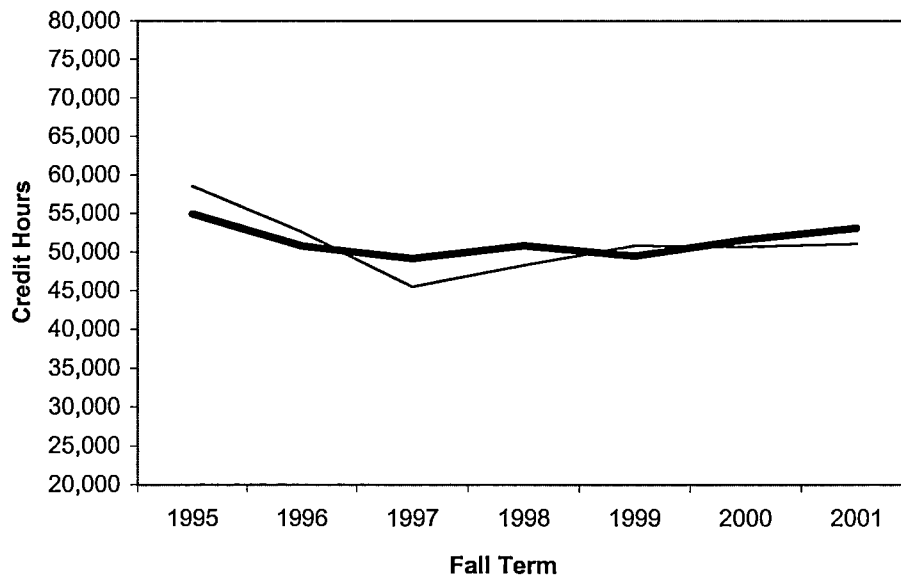


*Projections include credit, as well as non-credit courses and reflect estimated end of session targets.

**Oakland Community College
Official Enrollment Report
End of Session, Fall 2001
Orchard Ridge - Student Credit Hours**

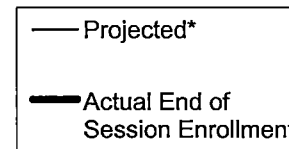
	<u>1995</u>	<u>1996</u>	<u>1997</u>	<u>1998</u>	<u>1999</u>	<u>2000</u>	<u>2001</u>	<u>1 Year % Change</u>	<u>5 Year % Change</u>
Projected*	58,541	52,610	45,509	48,287	50,799	50,703	51,052	0.7%	12.2%
Actual End of Session Enrollment	54,908	50,771	49,133	50,799	49,485	51,578	53,094	2.9%	8.1%
% of Projected	93.8%	96.5%	108.0%	105.2%	97.4%	101.7%	104.0%		
Actual End of Session (Credit)	53,911	49,806	48,371	50,448	48,989	50,829	52,276	2.8%	8.1%
Actual End of Session (Non Credit)	997	965	762	351	496	749	818	9.2%	7.3%

**Actual End of Session Enrollment
Orchard Ridge**



Analysis

Credit hours, as of the end of the Fall 2000 session, are at 101.7% of projections. In comparison to the end of the Fall 1999 session, credit hours were up 4.2%. The five year percentage of change is up 1.6%.

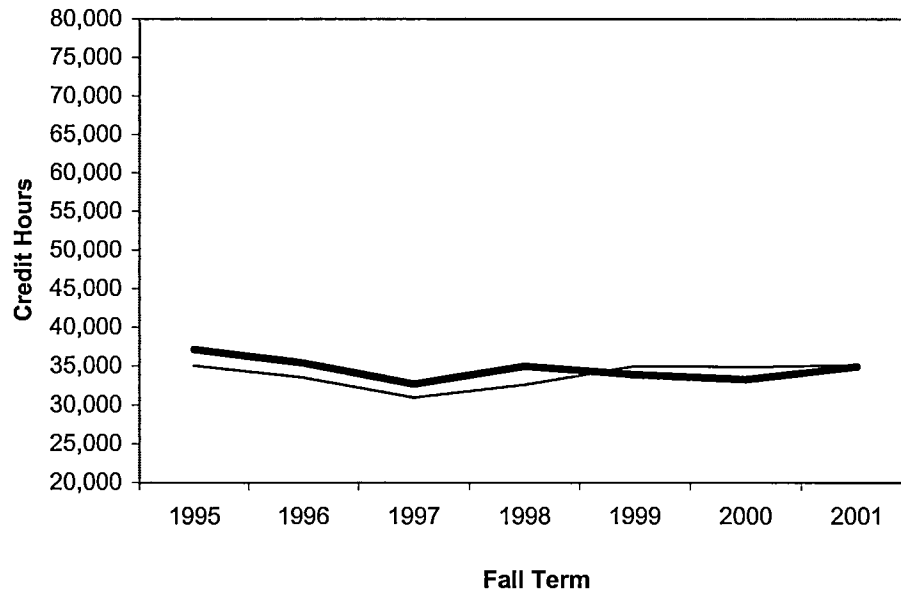


*Projections include credit, as well as non-credit courses and reflect estimated end of session targets.

**Oakland Community College
Official Enrollment Report
End of Session, Fall 2001
Royal Oak - Student Credit Hours**

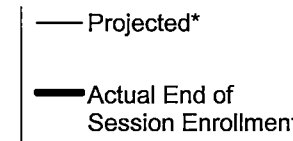
	<u>1995</u>	<u>1996</u>	<u>1997</u>	<u>1998</u>	<u>1999</u>	<u>2000</u>	<u>2001</u>	<u>1 Year % Change</u>	<u>5 Year % Change</u>
Projected*	35,049	33,500	30,923	32,607	34,956	34,890	35,130	0.7%	13.6%
Actual End of Session Enrollment	37,126	35,383	32,663	34,956	33,885	33,262	34,922	5.0%	6.9%
% of Projected	105.9%	105.6%	105.6%	107.2%	96.9%	95.3%	99.4%		
Actual End of Session (Credit)	35,104	33,371	32,663	34,956	33,885	33,262	34,922	5.0%	6.9%
Actual End of Session (Non Credit)	2,022	2,012	0	0	0	0	0		#DIV/0!

**Actual End of Session Enrollment
Royal Oak**



Analysis

Credit hours, as of the end of the Fall 2000 session, are at 95.3% of projections. In comparison to the end of the Fall 1999 session, credit hours were down 1.8%. The five year percentage of change is down 6.0%.

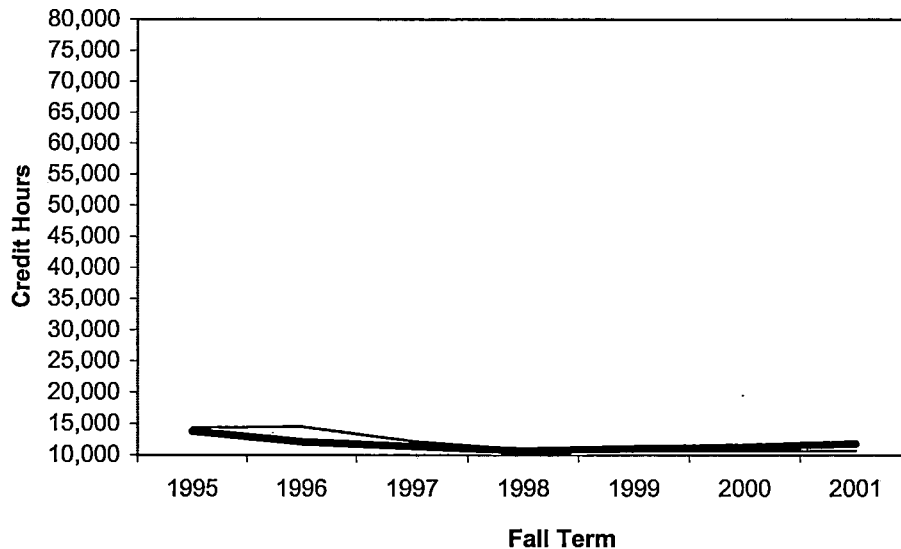


*Projections include credit, as well as non-credit courses and reflect estimated end of session targets.

**Oakland Community College
Official Enrollment Report
End of Session, Fall 2001
Southfield - Student Credit Hours**

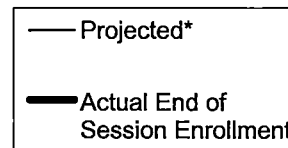
	<u>1995</u>	<u>1996</u>	<u>1997</u>	<u>1998</u>	<u>1999</u>	<u>2000</u>	<u>2001</u>	<u>1 Year % Change</u>	<u>5 Year % Change</u>
Projected*	14,316	14,500	12,145	10,844	10,631	10,611	10,684	0.7%	-12.0%
Actual End of Session Enrollment	13,764	12,075	11,351	10,631	10,996	11,214	11,734	4.6%	3.4%
% of Projected	96.1%	83.3%	93.5%	98.0%	103.4%	105.7%	109.8%		
Actual End of Session (Credit)	13,764	12,075	10,863	10,464	10,559	10,926	11,478	5.1%	5.7%
Actual End of Session (Non Credit)	0	0	488	167	437	288	256	-11.1%	#DIV/0!

**Actual End of Session Enrollment
Southfield**



Analysis

Credit hours, as of the end of the Fall 2000 session, are at 105.7% of projections. In comparison to the end of the Fall 1999 session, credit hours were up 2.0%. The five year percentage of change is down 7.1%.



*Projections include credit, as well as non-credit courses and reflect estimated end of session targets.