



north star

NEWS BULLETIN OF MICHIGAN CHRISTIAN COLLEGE

VOLUME 36 NUMBER 2 SUMMER 1995

Board approves spring ground breaking for new construction

Making a landmark decision for the future of the institution, the Board of Trustees of Michigan Christian College finalized at their June meeting plans to begin construction on new facilities. The board approved of a plan which will allow initial phases of construction to begin as soon as spring weather permits, with a formal ground breaking ceremony on the morning of graduation, May 4, 1996.

"By giving the go-ahead on construction plans, the Board of Trustees is expressing their strong commitment to building a bigger and better college," stated Dr. Ken Johnson, president of the college. "When completed, the project will totally reshape the appearance of the campus, and provide the college's greatest need, additional space for a growing campus population."

College officials launched the Foundation for the Future campaign last spring, designed to provide funding for the \$2.9 million construction project. Currently, approximately one-third

of the goal has been raised, and an aggressive plan to complete the campaign is scheduled.

"Not since the construction of the Alma Gatewood Residence Hall in 1970 has any one fundraising campaign been so vital," commented Bob Utley, chairman of the Board of Trustees. "We need the participation of everyone who is concerned with the future of our young people."

The construction plans include two new residence halls, one for men and one for women, each housing approximately seventy students; a campus commons area that joins the two halls; and a new campus entryway, including necessary changes in roadways and parking areas.

"The new residence halls are a key to future growth at Michigan Christian College," noted Mr. Utley. "They will alleviate overcrowding in the present residence halls and improve the quality of life for all boarding students."

TMP Associates designed the new facility as the first phase of a campus master plan for the



Flanked by two attractive residence halls, a campus commons provides new social space for the students.

college. Frank Rewold and Son, Inc., a local construction company, provided consulting services in the planning stages. Both firms have established an excellent reputation in the community for their recent design and construction of the Rochester Hills Public Library.

"Over the past year, I have seen a partnership that I have never experienced before. It's great to

see a positive vision turn into a powerful alliance of supporters dedicated to the future of Michigan Christian College," stated Mark Davis, vice president for advancement. "This capital expansion represents more than just brick and mortar. It establishes a foundation for continued growth well into the next century, and marks a commitment to long-term growth and stability."

Connection to Internet planned for fall semester

Imagine being linked to over four million computer systems in over 146 countries! By fall, the students of Michigan Christian College will have such resources available to them on campus

through the Internet, the most popular vehicle of the information revolution.

"With an average of fifteen sites being added to the Internet daily, the potential data available for

research is enormous," stated Shane Godmere, director of computer support. "Students will be able to do research for papers by accessing thousands of libraries and databases without even leaving their chairs."

College officials recently announced plans to the student body to proceed with installation of the Internet in campus facilities. This summer, the current IBM compatible workstations in the computer lab will be networked with a Unix operating system in order to allow the college to establish a connection to the Internet.

Along with terminals in the student computer lab, additional terminals will be placed in the Muirhead Library to facilitate Internet access of specialized library resources. Further connections will allow student access to the computer lab network and to the Internet from individual rooms in all of the college residence halls.

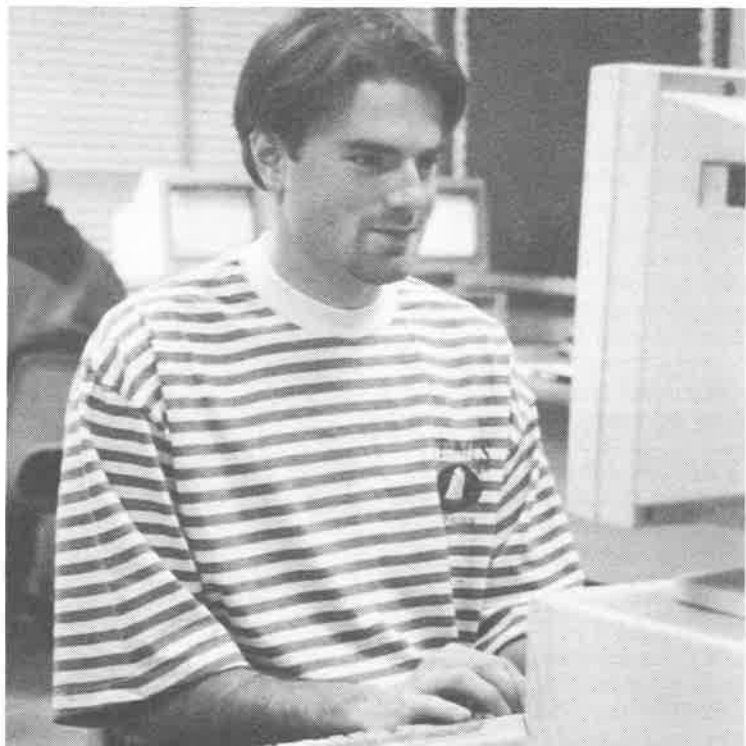
The Internet is a rapidly growing web of computer networks. By connecting thousands of independently administered educational, governmental, and commercial networks, the Internet provides individuals and organi-

zations with unlimited opportunities for resource sharing and communication.

On the Internet, students will be able to access university library catalogs, and then obtain additional resources through an interlibrary loan program already administered by the Muirhead Library. In addition, students will find numerous online books and indexes of articles. Many of the articles include full-text and can be printed directly from the Internet.

The Internet also features thousands of databases and an incredible amount of statistical information and reports from governmental, business, scientific, and educational sources. Often such data is more current than printed versions since the material is updated on a more frequent basis.

MCC's connection to the Internet will feature Gopher, a menu-driven navigator, and Netscape, a browsing tool for the World Wide Web that includes full-color graphics and sound, along with text. Mr. Godmere concluded, "Our link to the global community will play a key role in training successful graduates for a vastly changing world."



Senior Jory Sewell takes advantage of campus computer resources.

Making Headlines

INTERNSHIPS

On-the-job internship experiences add vital dimension to four-year academic programs. Page 2.

EMPLOYEES

Key positions filled by new vice president and Bible instructor. Page 3.

SYMPHONY

Chorus honored by invitation to appear with Detroit Symphony. Page 4.

CIVIC AWARD

State of Indiana bestows highest civic honor on alumnus. Page 5.

DATE CHANGE

Annual Homecoming program moved to fall semester. Page 6.

NEW TRUSTEE

Board adds new member to its ranks. Page 7.

LECTURESHIP

Fall lectureship to focus on theme of *New Testament Christians in a Post-Modern World*. Page 8.

DONOR LIST

Over 2,700 assist with operational gift programs of the college. Page 10.

NEW COUNCIL

Development Council begins to make positive impact on operation of the college. Page 12.

Anticipation builds as MCC nears ground breaking date



Dear Friends and Alumni:

With this issue of the *North Star*, the college is confirming its commitment to proceed with ground breaking for construction of the new facilities announced last year. We are tremendously excited in anticipation of that day. The planned construction and roadwork, our first major construction since 1978, will substantially upgrade campus image and facilities.

Every square foot to be built as a part of this project is desperately needed. We have reached our functional limit for boarding students and vehicle parking. Continued expansion of our service to students is critically dependent on these improvements. For the next ten months, we will be working feverishly to gain the remaining financial commitments needed to wrap up the funding for this project.

We have just completed our fourth year of Summer Jam, a camp on the campus for junior and senior high school students. Every year, the program has grown nicely, and again this year our college students were an outstanding group of volunteer camp counselors. Led by senior admissions counselor Jim Calkin, assisted by highly-capable area youth ministers, the camp had a positive impact on the lives of 170 campers.

The college's transition from two-year programs to four-year programs is going exceedingly well. More and more students are staying for their junior and senior years of college. The greater variety of offerings also continues to attract students to the campus who probably would not otherwise enroll at Michigan Christian College. Your favorable word to a high school senior is always appreciated and does impact the decisions of students.

Your continued prayers, gifts, and encouragements are vitally important to the work of Michigan Christian College. Together we are making a major difference in the lives of tomorrow's church leaders. Thank you for your support.

Sincerely,

Kenneth L. Johnson

Kenneth L. Johnson
President

Friends of Otis Gatewood gathered on the campus of Michigan Christian College on the evening of May 12 to honor the founding president of the college. During the event, Abilene Christian University presented their 1995 *Distinguished Alumni Citation* to Dr. Gatewood.

Dr. Gatewood has touched the lives of countless thousands as a missionary to Germany, Austria, and the former Iron Curtain countries; as an administrator for Michigan Christian College, Columbia Christian College, East European School of Evangelism, and International Christian University; and as an author. He has preached in over forty-five nations and on all but one continent.



Only at Michigan Christian College!



Senior Terry Leabhart of LaSalle, Michigan, listens to instructions in a video shoot for the Detroit Pistons. The Pistons chose MCC basketball players as stand-ins for a television commercial! One Piston, Allan Houston, had so much fun with the players that he gave his new athletic shoes to Jason Cavin, a sophomore from Garden City, since he wore the same shoe size!

Internships add depth to programs

"I've been impressed with the level of training the students receive in the counseling program of Michigan Christian College," stated Rod Linton, residential director of Childplace, a Christian child placement agency in Jeffersonville, Indiana. *"MCC graduates have proven themselves prepared to take on professional responsibilities and to be spiritually-minded. Helping troubled children demands strength of character and a heart of love. MCC students have been equipped with both."*

Combining strong academic preparation with on-the-job practical experience, the faculty of Michigan Christian College designed most of the new bachelor's degree programs with a required internship. In an internship, a student receives academic credit for a supervised work assignment in a business, church, or

agency related to their academic program. Internship experiences can be completed any time during the calendar year.

"I'm looking forward to working with General Motors this summer because the experience I'll receive will be invaluable for my future," commented Natalie Atkinson, a senior marketing student from Lennon, Michigan. Natalie will be interning this summer in the Consumer Relations Aftermarket Division of the GM Service Parts Operation. She will be working with retailers to confirm correct shelving, packaging, and pricing of AC Delco parts. She noted, *"Combined with all that I have learned and experienced at MCC, GM is a closer step to the goals I've set."*

Another intern, Jim Lewis, a junior youth and family ministry student from Morgantown, West Virginia, plans to spend his summer in an internship with the Blueville Church of Christ in Grafton, West Virginia. *"This internship is already providing valuable hands-on experience. It has really opened my eyes to the real-world aspects of being a youth minister,"* stated Jim. He continued, *"I'm sure that this summer will be a life-changing experience for me as I learn more about serving Him."*

Cathy Russo, a senior psychology student from Clinton Township, Michigan, has accepted an internship with Childplace. She remarked, *"I feel that my internship will give me practical experience in working with children. Working directly with the staff will be very beneficial, along with the intensive training that will be involved."*

Employers who are interested in hosting interns from Michigan Christian College are encouraged to notify the appropriate individual on campus. Currently, business interns are co-

ordinated by Steve Jones, counseling and psychology interns by Ben Noah, social work interns by Sarah Reddick, and ministry interns by Dr. Mel Storm. These individuals can be contacted in writing at Michigan Christian College, 800 West Avon Road, Rochester Hills, MI 48307.

Academic Programs

Bachelor of Business Administration

Business Management Major

with specializations in:
Business Studies
Childcare Administration
Criminal Justice/Public Safety Administration
Marketing
Pre-Law
Vocational Ministry

Bachelor of Religious Education

Christian Services Major

with specializations in:
Biblical Studies
Christian Ministry
Christian Studies
Youth and Family Ministry

Human Services Major

with specializations in:
Counseling
Psychology
Social Work

Associate of Arts

Adaptable for Numerous Majors

Associate of Science

Criminal Justice
Early Childhood
Natural Science



Employee Highlights

Steve Jones, assistant professor of business, recently co-authored an article for the *Journal of Vocational Education Research*. The article was entitled *Business Ethics: Perceptions in a Vocational Development Setting*.

Commending an Oakland County sheriff's lieutenant and part-time criminal justice instructor at MCC, the *Oakland Press* recognized **Don McLellan** for his role in capturing a teen escapee of Camp Oakland. Lieutenant McLellan spent over twenty minutes in icy lake waters, talking the teen out of the water and back into police custody.

During the month of May, **Dr. Mike Westerfield**, administrative vice president, spoke at a Bible lectureship in Atlanta, Michigan, and **Garth Pleasant**, director of athletic activities, conducted a gospel meeting for the Echo Meadows Church of Christ in Oregon, Ohio.

Steve Jones, assistant professor of business, received honors as *Faculty Member of the Year* at the Employee Appreciation Dinner, hosted by the board. Employees named **Shane Godmere**, director of computer support, as *Staff Member of the Year*.

Looking Ahead ...



Workers begin renovations in the west wing of the Associates Campus Center, the original building constructed by the college before it opened in 1959. The new floor plan is designed to gain additional office space, increase efficiency, and give the facility a more contemporary appearance. Details will be provided in the fall issue of the *North Star*.

Key positions filled by new employees of college

Filling two key positions in the institution, Dr. Ken Johnson recently announced the addition of Dr. Michael Westerfield and Dr. David Flear to the employee roster of Michigan Christian College. Dr. Westerfield began duties as administrative vice president in May, and Dr. Flear will join the faculty in the fall as an associate professor of Bible and communication.

Dr. Westerfield came to Michigan Christian College from York College in York, Nebraska, where he most recently served as administrative vice president. In addition to serving in a broad range of roles for York College, he has served as a consultant/evaluator for the North Central Association of Colleges and Schools since 1991.

"Dr. Mike Westerfield brings to Michigan Christian College a new level of academic leadership and academic experience not equaled in the history of the institution," stated Dr. Ken Johnson. *"As he assumes responsibility for much of the campus operation, I'm confident that his emphasis on quality education will take the college to new heights."*

Beginning his career at York in 1974 as an instructor of English, Dr. Westerfield began involvement in administrative responsibilities as an assistant to

the academic vice president from 1977 to 1986. He then served as vice president for student services from 1987 to 1989, during which time he worked with both the student services and admissions offices. He assumed duties as administrative vice president in 1989.

Dr. Westerfield received an associate degree from York, a Bachelor of Arts from Harding University, a Master of Arts from Pittsburg State University, and a Ph.D. from the University of Nebraska at Lincoln.

Bringing a wealth of academic and ministerial experience, Dr. David Flear will move to Michigan Christian College from Vancouver, Washington. He has published a number of articles and book reviews, and has spoken on lectureship programs at Abilene Christian University, Pepperdine University, and Columbia Christian College.

"Dr. Flear is widely recognized among personnel of our Christian colleges as a superb communicator of God's word," noted Dr. Johnson. *"I predict that he will be an extremely popular teacher. He also has the potential to bring the college's Bible Department a measure of national recognition not achieved since the early days of the institution."*

After receiving his bachelor's



Mike Westerfield and David Flear visit during a summer interview.

degree in education from Washington State University, Dr. Flear entered the Sunset School of Preaching. While preaching for congregations in Texas, Washington, and Oregon, he completed master's degrees at both Abilene Christian University and Portland State University, a D.Min. at Fuller Theological Seminary, and a Ph.D. at the University of Washington.

New Tapes from MCC

You can now order a cassette tape of the 1994-95 A Cappella Chorus, or a tape that features both Autumn and Spectrum. Each tape is only \$10.00, plus \$1.00 for shipping. Order your tapes today by calling the toll-free number indicated below. Please have credit card information available.

**MCC
Bookstore
1-800-521-6010**

Bookstore offers expanded services

Achieving a high student approval rating in a year-end survey, the MCC Bookstore ended the academic year with a new manager, a broader selection of materials, expanded hours, and a new nickname. During the summer, the store staff plans to accomplish further rearrangement and redecoration of the store before the students return.

"It is great to have a full-time manager in the store again," stated Larry Stewart, manager of the store from 1977 to 1979.

"Julie Harper is an energetic and creative individual and she is adding a great new dimension to the Bookstore operation."

Shortly after Mrs. Harper began responsibilities as the first full-time manager of the store since 1980, she immediately expanded the store hours into the evening and Saturdays. She then began broadening the selection of merchandise. *"We have significantly increased the amount of Christian music, books, videos, teen and youth group materials, puppet ministry, sportswear, games, and gift items carried in stock,"* stated Mrs. Harper.

In April, the Bookstore sponsored a contest to create a store nickname. The staff subsequently adopted the name *Campus Corner*, submitted by senior Jason Ragsdale.

For more than thirty years, the Bookstore has provided Bible class materials and church supplies for most of the churches in Michigan, and several in surrounding states. Marsha Bills, with twenty-one years of experience in the store, and Lucille Green, with fifteen years, continue to provide valuable services to congregations. Tammy Conner joined the Bookstore staff last April.

In discussing the impact of churches and individuals purchasing from the Bookstore, Mrs. Harper noted, *"All profits from the Bookstore go back into the college to fund operations and student scholarships."* She con-

tinued, *"We have in stock or can order any items that you see in catalogs from other Christian bookstores or publishers."*

For a Bookstore catalog or more information, call the store toll-free at 1-800-521-6010.



Michigan Christian College
*Building the Infrastructure
of the Kingdom*

*knowledge - jobs
homes - relationships*

Many of today's Christian youth have a strong desire to know the Lord and to give their lives in Christian service. Often, they just don't know how to begin, or they get distracted by the culture in which they live. Peer pressure causes them to make unfortunate decisions, including educational decisions, that damage their spirituality.

Michigan Christian College was founded to provide a place to educate young people who want to prepare to serve effectively as adults in the Kingdom. While preparing for secular careers, they also choose to gain knowledge and experience that will strengthen their faith and prepare them to teach and lead.

The greatest strength of the church lies not in full-time ministers, valuable though they are. Rather, her greatest strength lies in the countless thousands of committed Christians, routinely employed in the marketplaces of the world.

Most of our graduates fill responsible places on the job and in the church. Your financial involvement is critically important if we are to continue to be effective in attracting and training leaders of the first quality. Together, we are helping build the foundation for tomorrow's church.

Dr. J

Chorus chosen to appear with Detroit Symphony

Following a successful appearance with the Detroit Symphony Orchestra last fall, the Michigan Christian College A Cappella Chorus recently received an invitation to return next season for a February series with the orchestra. Joe Bentley, director of the chorus, stated, "Officials at Orchestra Hall were very impressed not only with the musical prowess of our students, but also with their personal skills and the way they handled themselves both on and off stage."

Last year, the chorus was selected to perform with the Wayne State University Chorale and the Madrigal Chorale of Southfield as vocal accompaniment for one of the symphony's popular pops concerts. Both the symphony organizers and the guest conductor, the world renowned Eric Kunzel, specifically requested that the MCC chorus return for the only pops concert scheduled for the next season.

"This is a wonderful learning experience for our students," commented Mr. Bentley. "Being invited to sing with a world-class ensemble like the Detroit Symphony Orchestra represents a strong validation of the skills our singers have developed, and speaks to the excellent reputation the A Cappella Chorus has gained in the arts community."



Members of the Michigan Christian College A Cappella Chorus share a meaningful message in song.

Last fall's concert with the Detroit Symphony was particularly significant in that it marked the seventy-fifth anniversary of Orchestra Hall. An estimated 7,500 individuals attended the four-day concert series. Mr. Bentley commented, "This opportunity showcased Michigan

Christian College in a big way to the general public."

The concert last fall featured Rita McKenzie, an internationally acclaimed performer, in a salute to Ethel Merman and an enjoyable selection of period music. Next year's concert will feature music selections by

Bernstein and Sondheim. Tickets will be available through the symphony box office.

Mr. Bentley concluded, "The positive impression that has been made will likely result in a long-term relationship with the DSO that will serve our students for many years to come."

At a Glance

Assisting with a new mission effort, a group of MCC students spent their spring break working with the Garifuna people of San Antonio, Honduras. The team taught English in the public school, sponsored a beach cleaning project, and conducted evening devotionals for the townspeople. Team leader Amy Coe felt that the week opened new doors for resident missionaries, and provided a "life-changing experience for members of the team."

Power for Today recently published two articles prepared by MCC students for their *Honors Composition* class. The April-June issue carried *Prayer Brings Peace* by Ryan McCullough of Midland, and *No Need to Worry* by Christian Young of Flint. During the semester, the class also researched and wrote a number of guides to assist students with use of resources in the Muirhead Library.

Eight new students have been selected to receive Trustee Scholarships for the 1995-96 academic year. Recipients include Jason Aston of Buffalo Grove, Illinois; Jim Frybarger of North Muskegon, Michigan; Lori Halverstadt of Canton, Ohio; Debby Hoyle of Fairhaven, Michigan; Heather May of Vineland, Ontario; Brad Reischl of Dunlap, Iowa; Jennifer Welsh of Fort Gratiot, Michigan; and Amanda Yen of West Memphis, Arkansas. The students were selected on the basis of academic record and leadership potential. The scholarships range from 50% to 100% of the full cost for tuition, room, and board.

Worth Repeating

Last spring, Coach Garth Pleasant and one of his players stopped at a 50's restaurant on their way to a high school game. Sitting in the booth next to them was a popular sports writer for the *Detroit News*, Joe Falls, who also was heading for the game for a story. Mr. Falls heard Garth discussing basketball and came over to his booth.

In his column the next morning, Mr. Falls told of his encounter with Garth and mentioned a comment that Garth made early in the conversation. He then stated, "Now I want to talk to this guy because he's got a sense of humor. So we talk. We talk for 90 minutes, almost until game time, and I am fascinated."

Mr. Falls related several details about his conversation, and how both the college and its basketball program impressed him. He then concluded his column by commenting, "I could almost see James Dean smiling in the picture across the room. By the way, does anyone know how the Imlay City-Fowlerville game came out?"

Athletes face stronger competition

Speaking to his basketball team in a pregame session last season, Coach Ron Hammye of Wayne State University warned his players to not underestimate their competition by stating, "Michigan Christian College is one of the best coached teams in the state of Michigan. You will not find student athletes that play any harder than the men who play for Michigan Christian." The Warriors of MCC left that basketball game within four points of defeating Wayne State University, an NCAA Division II school with an enrollment of over 20,000 students!

As Coach Hammye later stated to an employee of MCC, "You play a difficult and competitive schedule, but you are equal to the task!" Such comments surfaced frequently during the past season as Michigan Christian College stepped up its competition level. The season included games with other NCAA colleges and universities like Oakland University, Northern Michigan University, and Adrian College, and NAIA institutions like Siena Heights College and Madonna College. Even with the greater level of competition, the men's team ended their season with a 12-8 record.

In other areas of athletic competition, Michigan Christian College hosted and participated in three national tournaments for the NSCAA during the 1994-95 academic year. Teams from several states traveled to the

campus for finals in cross country, volleyball, and soccer.

The women's cross country team from MCC took second place in the nationals, and the soccer team took third. Based upon a positive response to last year's events, the association plans for MCC to host all three tournaments again next season.

Students receiving All American honors during the year included Ricardo Vidal of Valencia, Spain, Mary Ann Ureel of Lenox, Michigan, and Jenny Jolly of St. Clair, Michigan in cross country; Tyhesha Wilson of Gary, Indi-

ana in women's basketball; Deb Schroeder of Northville, Michigan in volleyball; and soccer players James Bull of Xenia, Ohio, Brian Pisano of Rochester Hills, Michigan, and Jim Tague of Warren, Michigan.

Michigan Christian College offers basketball, baseball, soccer, cross country, and track for men, and basketball, volleyball, cross country, and track for women. Students interested in playing sports at MCC may contact the Admissions Office toll-free at 1-800-521-6010 for program or scholarship information.



Cross-country runners begin a challenging five-mile course on the campus at the national tournament.



Linda (Doughty) Park receives the *Alumnus of the Year* award from Dr. Ken Johnson. The Alumni Association honored Linda for her outstanding service to the children and families of Lockett Christian Academy. Linda, a 1972 graduate of Michigan Christian College, is currently the principal of Lockett, an elementary and middle school in Royal Oak, Michigan, and has been employed by Lockett since its founding in 1977.

Homecoming moved to fall semester

Emerging from the Valentine Banquets of the early 1960's, Homecoming has been a February tradition on the campus of Michigan Christian College since 1963. For over thirty years, the day has provided an opportunity for alumni to share with the student body the excitement of a basketball game and the crowning of a queen.

Last winter, the institution scheduled to play Michigan Christian College on Homecoming day ceased operation and cancelled the game. The late date made it impossible to find another competitor for the scheduled time, but rekindled the desire of many to move Homecoming to the fall semester.

As a result of last year's events and discussions, Homecoming planners decided to move the event to November. The first fall Homecoming will take place on November 4, 1995, in conjunction with the fall drama production. The day will include the traditional events associated

with Homecoming, including an alumni chapel program, an alumni luncheon, and the Homecoming game. Currently, two classes plan mini-reunions, the classes of 1980 and 1985.

Since Homecoming normally attracts alumni from a broad range of class years, former students are encouraged to make

arrangements with friends to spend the day on campus. Such arrangements insure that individuals will have others present from their class to share the day. Those needing address or phone information on former classmates are welcome to phone Larry Stewart, director of public relations, at (810) 650-6013.



**Arrange to
Meet a Friend
for the Day!**

Michigan Christian College
Homecoming '95

November 4, 1995

"New Date and Old Traditions"

Chapel ~ A Cappella Chorus

Alumni Luncheon

Basketball Game

King and Queen Crowning

Post-Game Reception

Class of 1980 and 1985 Reunions

Mark your calendar today!

Alumni establish annual service day

Building upon the success of two previous campus improvement projects, the Alumni Association sponsored Alumni Service Day on June 3. Association leaders scheduled the day with intentions to make it an annual event for volunteers.

In 1992, twenty-two individuals donated over 600 hours of labor over the summer to completely renovate the area used by the music department, now named the Alumni Music Center. In the late summer of 1992, forty-one volunteers participated in a service day which assisted with improvement projects.

"Realizing the positive impact that our previous efforts had on the appearance of the campus, we decided to develop a service day as an annual event," stated Rob Clarke, president of the

Alumni Association. "Since we had proceeds from last year's Fall Festival Steerburger Booth available and planned to continue that project, we decided to use those proceeds to purchase materials for a service day project."

After considering a number of possibilities, the alumni leadership eventually decided to focus their efforts on the Chinese Gardens, a landscaped area near Gallaher Center that predates the college. Over the years, both the students and alumni have developed a sentimental attachment to the beautiful setting.

Looking at the Chinese Gardens as a potential long-term project, alumni leaders directed their efforts toward a first phase of improvements on June 3. They filled the old pools, which had become impractical to maintain,

and prepared separate areas for seeding and flower beds. Maintaining as much of the original landscaping as possible, they developed the area into an attractive rock garden.

Those interested in assisting the alumni with Fall Festival or Alumni Service Day should contact Larry Stewart at 1-800-521-5010 (press option 4).

Placement services available on-line

Providing a new service to alumni as well as students, the Career Center of Michigan Christian College recently added an employment opportunity listing on the college's computer bulletin board. The information can be accessed in the computer lab on campus, or by computer mo-

dem from any location either on or off the campus.

"On average, a person now changes jobs about every seven years," stated Ben Noah, director of career services. "This service will provide alumni and students with one more source of job information."

Currently, the jobs bulletin board includes a variety of professions, such as positions in nursing, teaching, and mid to upper-level management. Some of the openings are very appropriate for alumni because of experience requirements.

"The jobs bulletin board is just one tool being added to the Career Center by this fall," noted Mr. Noah. The center also plans to relocate to a more visible location near the Utley Student Center during the summer months, and will benefit from the assistance of a volunteer who plans to provide additional career counseling services on a part-time basis beginning in the fall.

The Career Center provides both career development and placement services. During initial years of enrollment, the Career Center assists students with the selection of a major, exploration of a variety of career paths, and the eventual development of an individual career plan. Prior

Bulletin Board Jobs

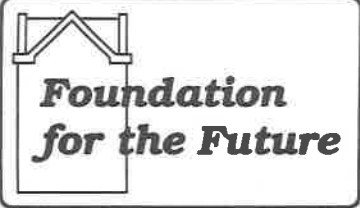
After August 1, 1995, you can access an updated version of the Michigan Christian College computer bulletin board by using the following configuration: up to 14.4 kbps; 8 bit; no parity; 1-stop bit; dial phone number (810) 650-6004. Job information is located under the file area.

to graduation, the center offers guidance with resume and interview preparation, coordinates on-campus interviews with employers, and maintains job bank information. Placement services are also available to former students of the college.

Employers who would like to list employment opportunities on the Michigan Christian College bulletin board should contact Ben Noah by phone at (810) 650-6038 or by mail at the college address. Alumni who would like to access the jobs listing, but do not have access to computer modem, can also contact Ben Noah by phone or mail for information.



Volunteers assist in transforming the old water pools of the Chinese Gardens into a scenic rock garden.



City building permits obtained as campaign for funds continues

Progress on the *Foundation for the Future* campaign continues as the college prepares for a spring ground breaking. To date, initial campaigns among the Board of Trustees, employees, and alumni have been conducted. During the coming year, an intensive effort is planned to conduct additional efforts in the community and among the alumni and friends of the college. Michigan Christian College salutes the individuals and organizations listed below for their campaign commitments.

- TORCHLIGHTERS**
Ken & Mary Johnson
Bob & Mary Utley
- TRAILBLAZERS**
Betsy Addams
Robert & Lucy Barnham
Betty Dickinson '78
John & Beth Fisher
Ford Motor Company
Ingersoll-Rand Company
Art & Marge Pope
Harold & Helen Slater
Jim & Dwina Walker '62, '61
Lawrence & Linda Watson
- PATHFINDERS**
James & Deborah Addams
Norman & Marge Christian
Faye Dilgard
Howard & Joan Hagerman
Duane & Patsy Harrison
Tim & Donna Hickerson
Wilma Lutz
Dick & Betty McClurg
Bob & Dolores Seecombe
Vulcan Materials Company
Fred & Louise Voskam
Bill & Eva Young
- GROUNDBREAKERS**
Mary Ellen Adams
Arlstate Foundation
Robert & Denise Ammerman '78
Howard & Dore Ezyly
Candace Cain
Mark & Penny Davis
Clark Dickerson
Aaron & Rose Ellis '75
Gerie & Peg Fowler
Thomas & Judith Fraick
E.L. & Mildred Frelund
Oscar & Hazel Glover
Carl & May Griffin '76
Gris & Kathy Guymre '78
Brian Hoggatt '87
Dean & Thelma Hoggatt
Kent & Debi Hoggatt '72, '75
Bruce & Elsie Hostrup
Larry & Pat Leslie '60
Clarence & Jerni Locke
Dean & Mary Moore '82
Bob & Kathy Norton '82, '83
Dean & Zani Oliver '73, '75
Toby & Chris Osburn
Helmut & Sue Patrick
Bob & Marvle Reich
Tom & Diane Reilinger '80
Annette Riley
Larry & Lynne Stewart '70, '74
Jim & Rhada Thomas
Rick & Karen Watson '70
Mike & Sharon Waterfield
Joe & Helen Williams
Dave & Teri Zito '76
- VISION BUILDERS**
Louise Addington '64
Mark & Kathie Addison '76
ADP Foundation
Kimberly Aldrich
Everette & Nan Alexander
Dan & Diana Allen '73
David & Pamela Allen '79
Rod & Kay Anderson '66, '65
Amy Angulo '88
Roger & Kathy Anspach
Dale & Lucy Anthony '83
Sarah Anthony '90
Blinda Arbaugh '78
Dave & Barb Arbaugh '78
Rodney & Laura Ashlock
Doug & Sarah Astala '90
Natalie Atkinson
Eric & Nola Auslin '78
John & Carol Axe '63
Kimberley Bailey '92
Jarrel & Rose Baker '74
Trevor & Lisa Baker '92
Marjyn Bakal '82
Andrew Barnes '89
Lindell & Jeanne Barrett '78
John Baty '95
Dan & Rachel Beaudoin '88
Bryan & Laurie Belleville '79
Joe & Vikki Bentley
Reggie Best, Jr. '90
Dan Billingsley '81
Gail Billington '73
Jack & Marsha Bills
Bruce & Debbie Blanton '78
Vic & Mary Bliss '90
John & Julie Boag '87
Shadreck Boitshwarelo
Philip & Rose Bona '71
Dan & Shannon Boren '86
Courtney Borror '92
Mark & Cari Bowen '83
David & Alisa Brackney '87, '86
Mark & Christine Brackney '90, '89
Chad & Lesly Brock '90, '83
Ernest & Brenda Brockway '68
Cynthia Brown '75
James Brown '62
Ricky & Jacqueline Brown '83
Tamika Brown
Gary & Jan Bruce '72
Jim Bruhl '67
Romie Brumbaugh
Ted & June Bullen '83
James & Louise Bugg '65
Randy & Tessa Bullock '84
Vicki Bullock '92
Brian Burdren '92
Terry & Sue Burgess '76
Ken Burman '70
Dennis & Debra Burry
Gregory & Maureen Burry
Harold & Nita Burry
Joe & Merlie Byers '64
David & Betty Byers '76
Glenn & Cynthia Byers '74
John Cadieux '61
Edwin Cahill
- Brian & Lisa Cain '89, '88
Jim & Lori Calkin '87
Jim & Sherry Calkins '78
Stanley Calvin '83
Andy Cameron '93
Belinda Cameron '77
Michael & Marilyn Carterbury
John & Lisa Carpenter '83, '84
Dannes Carr '67
Michael Carr '84
Heather Carrier
Jahl & Jean Carter '84
David & Jackie Case '67
Michael Cassidy '83
Joseph & Beverly Cassidy '72
Lisa Castro '90
Nicolas & Tina Cenda '75
Ken & Janice Chatlin '70, '71
Andy Chan '92
James & Candace Chapman '86
Ken & Linda Chiara
Gary & Cindy Childs '75
Ed & Donna Chickerson
Douglas Clay '72
Veronica Cobb '89
Dwight & Jani Coe
Stephanie Coe
Erin Coffee '90
Terry & Heather Coleman '81
- Lucille Green
Kevin & Karen Griswold '80
Todd & Carla Grizzell '85
Nancy Gross '65
Cheryl Groul '67
Bret & Connie Groves '78
Jim & Sandy Halerkamp '88
Dan & Lois Hagerman '76
Carol Halsey
Jim Hampton '79
Naomi Hanford
David & Barbara Harrell '76
Andy Hanson '91
Fred & Connie Harrison '72
Cathy Hartman '83
Ken & Gail Hayvanek '78
Mike & Mary Harvill '81 '80
Donna Hatmaker '75
Willie & Marilyn Haymon '82
Rodney & Angela Hazel '86, '91
John & Michele Heath '77
Vern Heiskell '87
Sandy Hinchinson '79
Kenneth & Linda Hendrix '61
Brad & Cathy Herman '87
Keith & Debbie Hermynton '73
Greg & Alison Hewitt '74
Al & Kym Hubbard '76
Robert Heatt '77
- Jeff & Marlyce Martin '82
Roger & Amber Martin '88, '90
Aaron & Carol Martinez '64
Harold & Kim Master '78
Carson & Linda Mathis '86
Ernie & Ginny May '77, '78
Tim Mays '89
Michael & Marie McClelland '90
Chris & Lynette McClure '78, '77
Dave & Susan McClure '83, '84
Larry & Billie McCoy
Jennifer McFarland
Doug & Donna McIntyre '81
James & Nancy Sue McKeever '75
Kevin & Janice McKisson '83
Charlene Meadows '82
Dan & Justina Meixner '80
Gary Meixner '76
Joe & Michele Meredith '87
Derek & Julie Miller '90
Dick & Billie Miller '76
John & Paula Miller '79
Larry & Karen Miller '79
Vincent Miner '84
Teddy Mitchell '88
James & Linda Mysarczyk
Edwin & Chata Montgomery '85
Leslie Montgomery
Mike & Peggy Moringstar '84, '85
- Monico & Joyce Ruiz '78
Guy & Bettie Ruying
Mike & Terry Rushing '81
Craig Ryan '76
Donna Ryan '81
Shawn & Dian Sandelur '91
Nalasha Sansom
Lora Santellan '82
Bob Scattergood '66
Steve & Violet Schad '77
Tim & Cathy Schrepper '84
Tom & Terry Schulz '68
Larry & Belinda Seagraves '82
Mark & Amy Seeba '82
Calvin & Patsy Seecombe
Dana Seider '92
Ken Seiders '72
Norman & Carol Seiders '69
Steve & Robin Shattuck '84
Clifford & Kristy Shelton '77
Dave & Loretta Shelton '79, '78
Paul & Heather Shinsky '78
Brenda Shortland '68
Kathryn Simons '79
David & Yvonne Singer
Steve & Sandy Sitter '80
Ken & Gail Skrams '82
Steve & Jill Skidmore '77
Rick & Cindy Slagter '81
Ken & Donna Slater '67
Sam & Juanita Slater '73
Harold & Gladys Sledge '69
Jim & Karla Sloan '85
Bruce & Beth Smith '69
Cheryl Smith '91
Dean & Carolyn Smith '72, '70
Dewayne & Marilyn Smith '68
Don & Kelley Smith '84
Mark & Robin Smith '75, '78
Mark & Beth Smith '89
Paula Smith '92
Jeff & Teri Smith '95
Tom N. Smith '86
Von & Teri Smith '84
Sharon Snitholman '85
Dave & Bonnie Sowles '67
Geneva Sparks '81
Curt & Nedra Sparks '77
Amy Spayde '88
David & Karen Speirs '70
Greg & Alissa Spraggins '85
Ed Stewart '71
Judy Stewart '70
Ken & Lorie Stewart '82
Ray & Elise Stewart
Mel & Diane Storm
Gerry & Tracy Staughton '85
Tyler & Gail Stricker
Jerry & Sherry Suggs '64
Karen Swinerton '78
Chuck & Brenda Tanner '73
David & Mary Lynn Tao '68
Don & Michelle Tale '84
Bob & Becky Teeter '80
Robin Terry
Texas Instruments Foundation
Mike & Simone Thomas '85
Bary & Becky Thompson '81
Jerral & Cynthia Thompson '82
Geoffrey & Andrea Thornton '65, '94
Carla Thyne
Keith & Barbara Tice '81
John & Joyce Todd '87
Kimberly Tomaszewski '81
Doreen Toner '84
Tim & Theresa Tostige '86
Robert & Becky Trestl '87
Jim & Beth Truex '93, '92
Gary & Vivian Turner
Kelly Turner
Jay & Cindy Tyler '87
Howard & Lori Tyree '78
Gordon & Lisa Urban '82
John & Chris Ulley
David & Carol VanHoeser
John & Janis VanHorn '71
Richard & Kay VanHorn '64
Rod & Tammy VanWagoner '78
Leisa Vanc '82
Janet Wagner '67
Bryan & Debbi Wainese '73
Wal-Mart Foundation
Elsaine Waiters '72
Dallas & Alecia Walker '77
Eddie Wallace '67
Nancy Wallace '75
Scott & Jana Waltman '66
Al & Brenda Warner '65
Bill & Diane Watkins '68
Brian Weakland '82
Chuck & Ginger Weatherford '77
Rich & Chris Weber '77
Keith & Andrea Welsted '77, '79
Roy & Joanne Wentworth '81
Scott & Lydia West '81
Barry & Lynette Wheeler '83
Don & Doe Wheelstone
Cindy Whitcomb '78
Joseph White '62
Jay & Pauline White '81
Warren & Mary Eta Whitelaw
Kevin & Nikki White '95
John & Carole Whitwell '62
Glendon & Beverly Williams '66
Jay & Mary Wilson
Tyshasha Wilson
Bary & Paula Woodhouse '82
Brian & Becky Woytowich '88
Troy & Tamara Whigglesworth '83
Bill & Linda Wright '70
Thomas & Bonnie Wright '79
John & Carla Wighe '79
Rob & Kathy Wright '87
Samuel Wyatt '88
Jesse & Sarah Youkum
Amy Young
Francesca Young '95
Kim Zadoonan '86
Jon Zartman
Denise Zavasky '73
Sylvia Zavis '90
Kevin & Barb Ziegler '79
Pam Zink '91
Total - 587 pledges

Club Name	Pledge Level	Donors	Gifts
Pioneers	over \$250,000	0	\$0
Torchlighters	100,000-249,000	2	200,000
Trailblazers	25,000-99,999	10	351,230
Pathfinders	10,000-24,999	12	156,400
Groundbreakers	1,500-9,999	34	119,032
Vision Builders	1-1,499	529	85,953
Total of Donors and Pledges		587	\$912,615

- Maurice & Bev Corrier '79
Phil & Tamara Conner '89, '90
Central Corporation
Ron & Tanya Content '81
Blair Cooper '86
Ron & Marlene Copeland '70
Dan & Carolyn Corp '87, '86
Randy & Linda Coss '71
Coventry Gardens 'Tot Lot'
Tom & Audrey Crampton '74
Ray & Carol Crawford '68
Phil & Shelley Crews '71
Paul & Teri Cross '82
James Crosslin '80
Gary & Virginia Cummins '78
Matt Dahm '87
Bonnie Daniel '88
Pamela Daniels '78
Tom & Mazari Darling '81
Jamie Davidson '80
David & Kris Davidson '80
John & Michal Davis '68
Veronica Davis '89
Laura Day '90
Stan & Pam Day '65
Kevin Dennis '83
Debra Deuler '82
Alan & Gail Diana '69, '70
Dennis & Paula Dickey '88
Royce & Terri Dickinson '75
Eric & Jenny Diehl '84
John & Kathy DiMarzio '83, '62
James & Vicki Doederlein '79
April Dosia '78
Dow Chemical
John & Sandra Dowdy '72
Paul & Sandra Doyle '67
Todd & Amy Draffen '88
Richard Driskell '76
Mickey & Rennee Dunn '73
Jack & Erma Duly
Floyd & Gail Dziadulka '68
Dan & Kelly Ealey '83, '84
Regina Ebert-Ustick
Steve & Mildred Eckstein
Bey Eirod '78
Albert Ethenidge '64
Richard Evans '66
Ken Farnsworth '88
David & Kim Farris '79
Callie Felner '92
Keith & Pat Ferchau '61
Amy Fields '89
David & Linda Fields '65
Yvonne Fitzgerald '87
Andrea Flatt '85
John & Cynthia Fletcher '76
Bob Ford '71
Robert & Judith Ford '64, '65
Bob & Jane Forrester '62
Everett & Maxine Foster '83
William & Suzanne Franklin '66
Fred & Karen Fras '67
Marlice Fulton '79
Kevin & Davana Galloway '90, '89
Alym Garavaglia '85
Al & Suzanne Garner
John & Margaret-Ann Garner '95
Robert & Paula Garrett '74
Mike & Anne Garrison '84
Clifford & Mary Gaskamp '77
James & Johnnie Galewood
Jim & Ginny Gehrig '81
General Motors Foundation
Chet & Charlotte Genry
Ron & Linda Gilley '82
Shane & Michele Godmere '91
Allen & Sherry Grant '78
Richard & Annie Green '76
Janice Green '73
- Marcia Hinson
Johnnie & Jan Hittler '86, '87
Mickey & Virginia Hitzman '76
Teresa Hixon '74
Marcus Hodge
John & Shari Hogg '93
Tom & Peggy Holland '77
Kenneth Hsieh '87
Frank & Diane Nesbitt '70
Bruce & Robin Nettles '83
David & Kimber Newman '83
Ben & Susan Noah
Kevin Norman
Jon Norris
Cheryl O'Rourke '76
Jim & Bertha O'Rourke
Don & Bernice Oberholzer
Bob & Pam Osenberg '80
Don & Tracy Jamison '79
Brian & Beth James '79
Gerald & Susan Jenkins '67
Michael & Jessica Jewell '85
Jodi Jezierski '84
Ronald & Teresa Johnson '82
Clarence & Brenda Jones '81
Stephen & Sarah Jones
Todd & Mia Jones '87, '94
K Mart Corporation
Che & Dee Kamphuis
Chris & Karla Kamrada '86
Mark & Kim Kays '85
Brad & Diana Kern '72, '71
Melissa Kessel '86
Jason & Leann King '92, '80
Marvin & Sandy King '70, '71
Scott & Jeanie King '87, '94
Tom & Dendie Kirkpatrick '74
Patty Kobrehel '84
Ron & Linda Koehn '76
Jenni Kogowski
Larry & Victoria Kooi '77
Barbara Krebs '67
Keith & Stella Kreh '62
Shari Kretzschmar '78
Larry & Marian Kreul
Shannon Kronberg '62
Andy & Lisa Kronmewer
Dorian & Beth LaCourse '76
Ken & Susan Lake '80
John & Ramona Qualls '91
Jeff & Stephanie Lawson '90
Jeffrey & Linda Lawther '74
Leroy & Dons Ledsworth '62
Marty & Crystal Lee '74
Walter & Anna Lewis '72
Betsy Lewis '66
Ernie & Tammy Lewis
Nancy Lewis '64
Michael & Pam Light '81
Fred & Anne Limatta '68
James & Pat Lindsay '70
JoAnn Lindsey '92
Norval & Gay Locke '62
Johnnie & Emily Loftis
Pete & Ruth Lomell '78
Cheryl Riley '75
Paula Rigdon '78
Wendy Robinson
Don & Kim Robinson '72, '76
Heidi Robinson '90
Dwight & Lisa Robinson '78
Patty Robinson
Alicia Roe '85
Mike & Vicky Roller '73
Karla Root '86
Rick & Lynette Root '81, '82
Bob & Debbie Roper '74
Brian & Carla Rose '77
Jobera Rose '82
Wesley & Rise Rothe '77
- Ted & Sue Morris '83
Tim & Vickie Morley '85, '86
Jim & Rhonda Mosley '71, '72
Carolyn Mottor '87
Martin & Jenny Murphy '86
Jack & Kimberley Murray '69
Harold & Charlotte Nance '89
Matt Nelson '84
Frank & Diane Nesbitt '70
Bruce & Robin Nettles '83
David & Kimber Newman '83
Ben & Susan Noah
Kevin Norman
Jon Norris
Cheryl O'Rourke '76
Jim & Bertha O'Rourke
Don & Bernice Oberholzer
Bob & Pam Osenberg '80
Don & Tracy Jamison '79
Brian & Beth James '79
Gerald & Susan Jenkins '67
Michael & Jessica Jewell '85
Jodi Jezierski '84
Ronald & Teresa Johnson '82
Clarence & Brenda Jones '81
Stephen & Sarah Jones
Todd & Mia Jones '87, '94
K Mart Corporation
Che & Dee Kamphuis
Chris & Karla Kamrada '86
Mark & Kim Kays '85
Brad & Diana Kern '72, '71
Melissa Kessel '86
Jason & Leann King '92, '80
Marvin & Sandy King '70, '71
Scott & Jeanie King '87, '94
Tom & Dendie Kirkpatrick '74
Patty Kobrehel '84
Ron & Linda Koehn '76
Jenni Kogowski
Larry & Victoria Kooi '77
Barbara Krebs '67
Keith & Stella Kreh '62
Shari Kretzschmar '78
Larry & Marian Kreul
Shannon Kronberg '62
Andy & Lisa Kronmewer
Dorian & Beth LaCourse '76
Ken & Susan Lake '80
John & Ramona Qualls '91
Jeff & Stephanie Lawson '90
Jeffrey & Linda Lawther '74
Leroy & Dons Ledsworth '62
Marty & Crystal Lee '74
Walter & Anna Lewis '72
Betsy Lewis '66
Ernie & Tammy Lewis
Nancy Lewis '64
Michael & Pam Light '81
Fred & Anne Limatta '68
James & Pat Lindsay '70
JoAnn Lindsey '92
Norval & Gay Locke '62
Johnnie & Emily Loftis
Pete & Ruth Lomell '78
Cheryl Riley '75
Paula Rigdon '78
Wendy Robinson
Don & Kim Robinson '72, '76
Heidi Robinson '90
Dwight & Lisa Robinson '78
Patty Robinson
Alicia Roe '85
Mike & Vicky Roller '73
Karla Root '86
Rick & Lynette Root '81, '82
Bob & Debbie Roper '74
Brian & Carla Rose '77
Jobera Rose '82
Wesley & Rise Rothe '77

Board adds new trustee

Chairman Bob Utley recently announced the addition of John E. Fisher to the Board of Trustees. John and his wife, Beth, currently reside in Brentwood, Tennessee.

"As a trustee, I would like to be able to get more people involved in supporting Michigan Christian College," stated Mr. Fisher. He also noted his interest in trying "to get more people who work for companies that match funds to take advantage of this great opportunity to have their gifts to the college doubled."

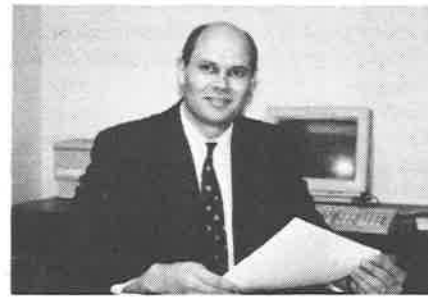
Before retiring in 1992, John worked as a manufacturers' representative for furniture and clock companies. During his career, he was salesman of the year for two companies, and a member of the George B. Bent Million Dollar Club.

Active in church work since childhood, John served as an el-



John and Beth Fisher

der of the Brighton Church of Christ before moving to Tennessee. John and Beth have participated in all but two Partnership Dinners, and have assisted with the Fall Festival for years. Beth served as president of the Associates from 1990-1992.



Planned Giving Matters

Mark Davis
Vice President
for Advancement

Recently, a couple called me with some questions concerning their estate planning and life insurance. This was the first time they had reviewed their life insurance in more than fifteen years.

As the couple reviewed their life insurance, they discovered one policy was paid in full, but was no longer needed since their youngest child was now starting a career and they were planning to retire. They decided to make a planned gift by making Michigan Christian College the benefactor of their life insurance policy.

This couple's situation is not unusual. With today's hectic pace, it is difficult to review life insurance policies. And often, policies have incorrect beneficiaries or are no longer needed for financial security, especially as children grow and financial responsibilities diminish.

Life insurance policies can provide a convenient way to make a planned gift, often a substantial gift, at a reasonable cost. Significant income, estate, and gift tax savings may be realized through planned life insurance gifts. Additionally, such a gift normally will not be delayed or circumvented by problems in probate court.

If you would like to discuss how to make a planned gift through life insurance, please call us toll-free in the Development Office at 1-800-521-6010.

Current College Needs

Donations of serviceable equipment can meet important college needs and provide you with a tax savings! Currently, the college could benefit from any of the following items:

- IBM compatible computers
- compact automobiles
- computer printers
- pickup truck
- computer monitors
- photocopier
- wall projection screen
- fifteen passenger vans
- slide projector
- upright piano

To discuss donation of an item, please phone Mark Davis, vice president for advancement toll-free at 1-800-521-6010.



Mike Westerfield, Phil Conner, and Mark Davis catch a picture with Ernie Harwell, renowned sportscaster for the Detroit Tigers.

Harwell speaks at P.D.

Guests of Partnership Dinner XXIII enjoyed a unique experience as they met and listened to Ernie Harwell, famed sportscaster for the Detroit Tigers. Over 1,200 individuals gathered at the Cobo Civic Center for the annual event.

"We were thrilled to have Ernie agree to participate," stated Phil Conner, director of the campaign. "Many have commented that they could have listened to him all night because he brought back fond memories which had been long forgotten."

After stints with the Brooklyn Dodgers, New York Giants, and Baltimore Orioles, Harwell be-

gan his thirty-two year career with the Detroit Tigers. Since his induction as the first sportscaster in the Baseball Hall of Fame in Cooperstown, New York, he has been inducted into six additional Halls of Fame. *Sports Illustrated* named him as radio announcer for their *All-Time Dream Team*, and local sports enthusiasts have selected him as *Michigan Sportscaster of the Year* on fifteen occasions.

With a total of 1,580 ticket sales, including matching gift funds, dinner attendance increased by 11% over the previous year. Sixty congregations participated in the campaign.

Gift clubs restructured

Expanding the number of gift clubs from three to seven, the Development Office recently introduced a revised system of donor recognition. The staff finalized the new club levels, listed in the chart below, and formatted the 1994 donor listing on pages ten and eleven of this issue of the *North Star* to reflect the new giving club designations.

"The new donor recognition clubs provide a greater number of increments to accommodate an easier transition from one level of giving to the next," stated Phil Conner, director of operational gifts. "Moving to the next level of giving should now be a more practical challenge."

In contrast to the previous clubs, which recognized all gifts above the \$1,000 level together,

the new program also acknowledges those giving at higher levels. "Even though every gift, regardless of size, is important to the college, it is urgent that we increase the number of families that give at a higher level," noted Mr. Conner. "One way or the other, however, we want to recognize everyone because of their belief in what is happening at Michigan Christian College."

The new clubs recognize all donations to operational gift programs. Gifts to the *Foundation for the Future* campaign are recognized by separate clubs.

Gift Clubs

Trustee's Alliance
\$5,000 or above

Leadership Alliance
\$2,500-\$4,999

President's Circle
\$1,000-2,499

Progress Club
\$750-\$999

Achievers Club
\$400-\$749

Partners Club
\$250-\$399

Century Club
\$100-249

Honored by the College

Right: MCC Parents of the Year, Charles and Margaret Hadfield. Below: Recipients of the *Distinguished Christian Service Award*, Lewis and Mary Karkosky of Kentwood, Michigan, for 45 years of sharing the gospel; Clifford and Pauline Tucker of Royal Oak, Michigan, for 46 years of sharing the gospel; Paul and Ruth Watson of Oregon, Ohio, for service to MCC and 53 years of sharing the gospel; and Dean and Mary Clutter of Coldwater, Michigan, for 48 years of service to the church in the North.

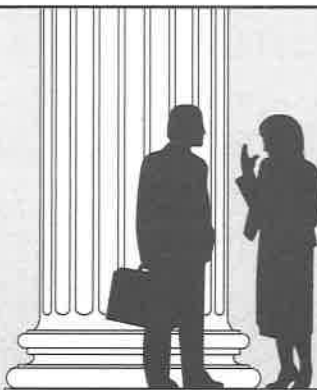


38th Annual
Michigan Christian College

Bible Lectureship

October 1-3, 1995

"New Testament Christians
in a Post-Modern World"



Featured Evening Programs

- | | | |
|--------------------|-----------|---|
| Sunday, October 1 | 4:30 p.m. | SONsational Sunday for Teens with Ryan Gibbons of Midland, Michigan, Autumn, and Spectrum |
| | 6:00 p.m. | Keynote Lecture by Dr. Jimmy Allen of Searcy, Arkansas |
| | 7:30 p.m. | Acts Project by Dr. Carol Osburn of Abilene, Texas |
| Monday, October 2 | 7:15 p.m. | Michigan Christian College Concert Chorale |
| | 8:00 p.m. | Keynote Lecture by Dr. Jack Reese of Abilene, Texas |
| | 9:15 p.m. | Refreshments and Fellowship |
| Tuesday, October 3 | 7:15 p.m. | Michigan Christian College A Cappella Chorus |
| | 8:00 p.m. | Keynote Lecture by Landon Saunders of Norwich, Vermont |

Daytime Lectures

- | | |
|--------------------|--|
| Monday, October 2 | Textual Classes with Dr. Greg Sterling and Dr. Carol Osburn |
| | Practical Classes with Dr. Flavil Yeakley and Dale Smith |
| | Ladies Classes with Birgie Niemann and Dorris Shultz |
| | Afternoon Keynote Lecture with Dr. Patrick Mead |
| Tuesday, October 3 | Textual Classes with Dr. Randy Chestnut and Dr. Andre Resner |
| | Practical Classes with Dr. Jack Reese and Dale Smith |
| | Ladies Classes with Birgie Niemann and Dorris Shultz |
| | Afternoon Keynote Lecture with Dr. Patrick Mead |

Fellowship Luncheons and Dinners

- | | | |
|--------------------|------------|---|
| Monday, October 2 | 12:00 p.m. | Mid-North Preachers Encouragement Luncheon |
| | | Ladies Luncheon Hosted by the MCC Associates |
| | 5:30 p.m. | Heritage Club, Trustee's Alliance, Leadership Alliance, and President's Circle Dinner |
| Tuesday, October 3 | 12:00 p.m. | Alumni Preachers Luncheon |
| | 5:30 p.m. | Lectureship Fellowship Dinner |

Complete schedules will be mailed in August to friends of Michigan Christian College living in the Midwest region. Others may obtain a schedule by phoning the President's Office toll-free at 1-800-521-6010. Plan now to enjoy the fellowship of hundreds of Christians and the inspiring messages of outstanding Christian servants.

Loan fund endowed

Naming the program in honor of her daughter Cheryl, a former student of Michigan Christian College who passed away last September, Annette Riley, a member of the Board of Trustees, recently established an endowed loan fund for MCC students. The Riley Memorial Loan will fund short-term loans for personal emergencies.

"This endowment establishes a long-term fund to assist our students in time of need, whether medical, family crisis, or personal, commented Mark Davis, vice president for advancement. "This thoughtful gesture helps assure students that they will be taken care of while attending MCC, and is one more example of how MCC partners are dedicated to the needs of students."



Memorial Gifts

October 1, 1994
to June 13, 1995

MAUDE ADAMS

Herman & Carol Hendon
ROSE AEDER
 Nick & Geneva Schafsnitz
CLAUDETTE ALEXANDER
 Gene & Wanda Hatcher
 Ed & Joan Palmer
 Nancy Schroeder
 Bill & Joanne Shinsky
 Ethelene Bruce White
DAVID ALLGOOD
 Paul & Gwinifred Barnum
JIM ARNETT'S FATHER
 Mary Sue Pace
DR. BRUCE ARNOLD
 Arthur Gould
 Norma Jean Ryan
THOMAS BASH
 Marjorie Bash
LARRY BOUMAN
 Martha Bouman
EDDIE G. BUSH
 Keith Alan Bush
DON & MARIE CARTER
 Walter & Bonnie Carter
JANET CASCADDEN
 Jim & Wendy Burcham
 Ed & Joan Palmer
 Beverly Rohan
 Bill & Joanne Shinsky
 Evan Ulrey Family
ROSSIE COE
 Sibyl Coe
 Lockman School Staff
BASIL COLTSON
 Cecil & Shirley Alexander
 Robert & Denise Ammerman
 Milton & Evelyn Fletcher
 Bill & Joanne Shinsky
MEGAN COPE
 Herman & Carol Hendon
RAYMOND COX
 Robert & Gertrude Cummiskey
 Doris Dunn
LOIS CRAWFORD
 Averill & Wilma Thomas
HELEN RYAN DAVIES
 Art & Norma Jean Ryan
ROYCE DICKINSON
 Mary Ellen Adams
 Adrian Church of Christ
 Cecil & Shirley Alexander
 William & Jean Anderson
 Roger & Kathy Anspach
 Bob & Lucy Benham
 Glenn & Joan Berry
 Viva Blackburn
 Steven J. Blatnik
 Jerry & Rita Brackney
 Mark & Christine Brackney
 Gary & Rita Brewster
 Brook. Ctr. Church of Christ
 Mildred A. Brucker
 J.R. & Mildred Buckley
 Donald & Judy Charbonneau
 Church of Christ of Plymouth
 George & Dorothy Clark
 Clifford & Helen Coffee
 Mr. & Mrs. Ken Coggeshall
 Forest & Juanita Crooks
 Gary & Virginia Cummins
 Betty Dickinson
 Ed & Delores Dickinson
 Leonard Dickinson
 Royce & Terri Dickinson
 Terry Doyle
 Fritz & Kathy Duesel
 Clark & Margaret Finley
 Milton & Evelyn Fletcher
 Everett & Maxine Foster
 Jody Foster
 Gene & Peg Fowler
 Gerri Garcia
 Gateway Church of Christ
 Martin & Darlene Gilliland
 Michael & Diane Gilliland

Griffin, Smalley, & Wilkerson
 Howard & Joan Hagerman
 Clay & Mary Haust
 Ken & Linda Hendrix
 Holly Plumbing, Inc.
 Gerald Hyder
 Ralph & Margaret Jackson
 Paul W. Jocks
 Ruby Johnson
 Karen Jones
 Ron & Rena Jones
 Juanita Kahrl
 Dale & Frances Kaiser
 Joseph & Rowena Kays
 Tim & Hillery Kelems
 Al & Jan King
 David & Niki Kirkpatrick
 William Kurtzhals
 Chuck & Sandra Largent
 Mr. & Mrs. J. Thomas Lenga
 Julie Libby
 Lincoln Park Church of Christ
 Mr. & Mrs. Clayton Mansfield
 David & Elaine May
 Mixylodians Dulcimer Club
 Peter & Patti Molloy
 Mr. & Mrs. Doyle Mosley
 Mickey George Mosolgo
 John & Susan Nelson
 Ira & Melda Neubauer
 Arthur & Marjorie Pope
 Mike & Renetta Proffitt
 Carrie Ramsey
 Darwin Rehkop
 Cathy Ries
 Annette Riley
 Mr. & Mrs. Robert Schaffer
 Cal and Pat Seccombe
 Ken & Debbie Shepard
 Bill & Joanne Shinsky
 Ron Siegel
 Silver Strings Dulcimer Society
 Gladys Stanfill
 Larry & Lynne Stewart
 Bob & Pat Sword
 Helen Sword
 David & Susan Thomas
 Leland & Joan Thompson
 Don Tocco
 David & Melinda Tubbs
 Terry & Barbara Wheeler
 David J. Williams
 Jesse & Sarah Yoakum
WINONA DOTY
 Hellen Wood
MARTIE DUNN
 Don Dunn
ROBERT DUNN
 Doris Dunn
CHARLES & GARNET EDDY
 Nelson & Janis Eddy
FRED FISHER
 Nelson & Janis Eddy
RIA FRIJTERS
 Annette Riley
ANNA FULTON
 Lucille Green
BESSIE GALLAHER
 Viola Felske
 Emma Schafsnitz
 Max Schafsnitz
 Rudy & Anita Schafsnitz
ESTELLE GENTRY
 B.A. & Phyllis Tansil
 Hellen Wood
LESLIE GRAY
 Clyde & Retha Summers
IRENE GRIFFIN
 Parkside Church of Christ
GENE HALL
 Jack & Carletta Miller
MURRAY HAMMOND
 Roger & Kathy Anspach
 Mr. & Mrs. R. Lewis
CLAYTON VERNON HARRIS
 Milton & Evelyn Fletcher

Bill & Joanne Shinsky
 Erlon & May Dell Turner
 Ethel Weir
LOMON HARRISON
 Robert & Lora Jones
 Ed & Joan Palmer
BETTY HILL
 Louis & Vera Pippin
JOHN HUMPHREY
 Gary & Patricia Denslow
MARY JOHNSON
 Mary Sue Pace
BOB JONES
 Elmer & Veneda Dillard
CLAUDETTE JONES
 Virgil & Wanice Beckett
 Mr. & Mrs. James Brown
 Mr. & Mrs. Jackson Coker
 Georgia DuBois
 Gertrude Dykes
 Latina Dykes
 Hope Edwards
 Don & Lynn England
 Lillie Mae Erwin
 Mr. & Mrs. J.O. Hamby
 Mrs. W.S. Hamby
 Mr. & Mrs. Winston Hamby
 Bill & Lil Harris
 Conrad & Florence Hays
 Herman & Carol Hendon
 Glen & Barbara House
 Mike & Elaine Justus
 Mr. & Mrs. Sidney King
 Rheba Berryhill Mattox
 Mr. & Mrs. Dean Priest
MARY NELL JONES
 Elmer & Veneda Dillard
RALPH JONES
 Howard & Joan Hagerman
 Al & Donna Hendricks
SANDRA KERNS
 Parkside Church of Christ
CLINTON LAWSON
 M.F. Lawson
MILDRED LEDFORD
 Wanda Bailey
 Edna Chester
 Marveline Davey
 Margaret Hadfield
 Lyndall & Judy Jackson
 Fred & Bess Johnson
 Mary Ann Jones
 Robert & Linda Jones
 Nannie Lambdin
 Uldean Ledford
 Bonnie Lemon
 William & Martha Matson
 Barbara Ralston
 Helen Williams
LELAND LEMMER
 Nelson & Janis Eddy
EARL & ERMA LOMAX
 Earl & Janet Carpenter
MARTHA LOUKS
 Bruce & Lois Boggan
PAUL L. LUTZ
 Don & Judy Blake
KATHRYN LYMAN
 Robert & Dorothy Clark
 Dennis & Cynthia Saulsberry
 Mr. & Mrs. Daniel Sparks
ALBERT RICHARD KING
 Helen E. Adams
 Fidelity Bank
 Anna Carter
 Gerald & Ruth Charron
 Robert & Kathy Dittrich
 Herman & Carol Hendon
 Julie L. Jones
 Ron & Rena Jones
 Mr. & Mrs. Richard Lyman
 Malcolm & Nancy Milne
 Mr. & Mrs. Alex Oz
 Ed & Joan Palmer
 Donald & Joya Pastori
 Arthur & Marjorie Pope
 Mike & Renetta Proffitt
 Mr. & Mrs. Larry Prohl
 Annette Riley
 Herbert & Frieda Rodgers
 Hugh & Margaret Rogers
 Scott & Michele Saxton
 Bill & Joanne Shinsky
 Dan & Karen Sorensen

Eustis & Eunice Stone
FLETCHER MAX KING
 Doris Dunn
 Ernest & Betty Maness
 Bessie Mough
 Bill & Mary Lou Shipp
 Elizabeth Jean Titus
 Marteen Weaver
 Hellen Wood
MARY KING
 Ernest & Betty Maness
LEONARD MANNIS
 Parkside Church of Christ
ALTON S. MASON
 Myra Osborn
JACK MAYNARD
 Mr. & Mrs. Lou Bacon
 Ronald & Dorothy Content
 Howard & Joan Hagerman
 Holmes Road Church of Christ
 Judy McCrone
 Jessie Seratt
 James Stoll
 Jerry & Janet Tarrant
 Elmer & Virginia VanAntwerp
 Almerry Wash
PAUL MCALLISTER
 David & Lori Cumming
 Dale Kaiser & Frances
 Gerald & Donna Henriksson
TOM & MAE MCKENZIE
 Herman & Carol Hendon
MARY MILLS
 Hugh & Bettie Vick
GENE AND MARY MONROE
 Mr. & Mrs. Ed Monroe
 Mary Jean Wilson
MARY MONTGOMERY
 Robert Montgomery
DAISY MORRIS
 Jack & Carletta Miller
CHERYL PARISH
 John & Shirley Hinds
 John & Patti Shephard
 Andy & Mary Warren
 George & Lu Warren
JOHNNY & JOAN PASEUR
 Herman & Carol Hendon
LOIS PERRY
 Severin & June Anderson
 Mabel Baker
 John & Edna Bogart
RONALD PERRY
 Allen & Marie Barber
LOUISE PETERSON
 Herman & Carol Hendon
JERRY PHILPOT II
 David & Alisa Brackney
 Tim Mays
 Bill & Joanne Shinsky
REX RAY
 Glenna Ray
ANN REBEC
 Almerry Wash
DALE REYNOLDS
 Flaura Owen
CHERYL RILEY
 Doris Boldt
 Gerald & Gloria Carnago
 Nick & Christine Cheolas
 Alison Cook
 Mary Darnall
 Robert & Jeanine Davis
 Irv & Olga Davorkia
 Richard & Susan Dworkin
 Milton & Evelyn Fletcher
 Ronald & Patricia Gawlik
 Wayne & Norma Hagaman
 Ron & Rena Jones
 Mark & Denise Lindeman
 Grace Meli
 Donna Monacelli
 Oakland Church of Christ
 Annette Riley
 Robert & Mildred Rucker
 Marco & Norma Santi
 Larry & Lynne Stewart
 Estelle Van Wiemeersch
 Jesse & Sarah Yoakum
DR. RALPH RITCHEY
 Harvey & Jeanette Kuykendall
 Pete & Ruth Lomeli
 Bob & Linda Ordway
 Laurence & June Sattison

John & Rose Schleinz
 Cecil & Eva Taylor
 Gary Taylor Family
 Randy M. Taylor Family
 Roger D. Taylor Family
 Almerry Wash
 Thomas Witt
INEZ ROBINSON
 Dr. David & Elaine Adams
 Mary Ellen Adams
RON RUMMEL
 Kay Crawford
 Iola Rummel
MEARL RYAN
 Cecil & Shirley Alexander
 Roger & Kathy Anspach
 Jack & Marsha Bills
 Milton & Evelyn Fletcher
 Lucille Green
 Cathy Ries
 Wanda Rushford
 Bill & Joanne Shinsky
 Jesse & Sarah Yoakum
MORRIS RYAN
 Art & Norma Jean Ryan
MYRTLE SCHAFFER
 Jesse & Sarah Yoakum
JEFF SCHAFSNITZ
 David & Niki Kirkpatrick
 Nick & Geneva Schafsnitz
ELIJA SHELTON
 Doyle & Ethel Dickinson
HARLIN SHEPHERD
 Nelson & Janis Eddy
JOHN SMITH
 Hellen Wood
RONALD SPURRIER
 Robert & Nancy Braden
 Pauline Montgomery
 Elizabeth Nesbit
 Joe & Sue Pace
 Linda Pace
 Harold & Helen Slater
 Margaret Spikes
 Jess & Lorene Temple
WARD SULLIVAN
 Parkside Church of Christ
RUTH SWANGER
 Helen Jones
LOLA THOMPSON
 Hellen Wood
VERA THREADGILL
 Mary Sue Pace
ROSS TRINKLEIN
 Wes & Kathryn Hendrick
 Marcia Hinson
 Vera Manley
 Bill & Mary Trinklein
ANDREW VEITH
 Jack & Carletta Miller
MRS. WHITT
 Elmer & Veneda Dillard
DON WILLIAMS
 Hellen Wood
HOBERT WOODLEE
 Gary & Shirley James
STEPHEN WOODWARD
 Gerald & Sheila Gaeschke

Honor Gifts

VIRGIL & LOUISE BRACEWELL
 Cal & Pat Seccombe
ELMER & VENEDA DILLARD
 Terry & Norma Ruth Blake
BAXTER & MARGRET FELTNER
 Peggy Chittick
CLARK & MARGARET FINLEY
 David & Susan Thomas
JOHN & GLORIA RYAN
 Art & Norma Jean Ryan
ED & LOUISE TARRANT
 Howard & Joan Hagerman
JIM THOMAS
 Mary Ellen Adams
JOHN TODD
 Otis & Irene Gatewood
 Wanda Rushford

Every year, many individuals send special gifts to Michigan Christian College as a tribute to the memory of friends and relatives, or in honor of special people. Memorial gifts and honor gifts may be sent to the Office of the President, Michigan Christian College, 800 West Avon Road, Rochester Hills, MI 48307. Be sure to include 1) your name and full address, 2) the name of the person being honored by the gift, and 3) the name and address of the person to receive an acknowledgment card.

TRUSTEES ALLIANCE
Mary Ellen Adams
Betty Adams
Adrian Church of Christ
Anonymous Foundation
Associates of MCC
Jim & Vivian Avery
Norman & Marge Christman
Floyd Keri Foundation
Ford Motor Company
John Frank Estate
General Motors Foundation
Suzanne & Mabel Howard Estate
Lynn & Barbara Packer
Iola Rummel
Harold & Helen Slater

LEADERSHIP ALLIANCE
Robert & Denise Ammerman '78
Betty Dickinson '78
Dow Chemical
Wes & Kathryn Hendrick
Holmes Road Church of Christ
IBM Corporation
Ingersoll-Rand Company
Ken & Mary Johnson
Annette Riley
Rochester Church of Christ
Bob & Mary Utley
Lawrence & Linda Watson

PRESIDENT'S CIRCLE
Allstate Foundation
Ameritech Foundation
Amoco Foundation, Incorporated
Ann Arbor Church of Christ
Alan & Michele Bain
Marjorie Bash
Robert & Lucy Benham
Bill & Carolyn Bonifay
Gary & Rita Brewster
Bridgestone & Firestone Trust Fund
John & Rosemary Brown
Bobby Carter
Donald Carter, Jr. '64
Walter & Bonnie Carter
Jim & Nell Chamblee
Chrysler Corporation
Ralph & Lorraine Church
CSX Corporation
Jeff & Mollie DeBard
Chuck & Diane Devereaux
Eaton Corporation
Steve & Mildred Edkstein
Aaron & Rose Ellis '75
Ron & Cathy Englehart
Milton & Evelyn Fietcher
Gene & Peg Fowler
Wayne & Donna Francisco
Ouis & Irene Gastwood
Diane & Patty Hatfield
Tim & Donna Hickerson
James & Ruth Hoggatt
John & Vardena Ireland
Johnson & Johnson Company
Kellogg's of Battle Creek
Walter & Lottie Kos
Mike & Dawn Kurschat '86
Lake Orion Church of Christ
Lynn & Pat Leslie '60
Lincoln Park Church of Christ
Wilma Lutz
Jim & Carol McCartney '78
Midland Tire & Auto Service
Larry & Mary Moebis
National Bank of Detroit
Larry & Kay Norman
Rudy & Anna Northcutt
Northwest Church of Christ
Al & Ethel Oz
Mary Pearson
Plymouth Community United Way
Al & Marge Papp
Quinn & Peggy Reed
Tom & Diane Relling '80
Harry Riemenschneider
Robinson Construction
Santa Fe Pacific Foundation
Searle Charitable Trust
Shell Companies Foundation
Bill & Laverne Smith
Paul & Margaret Southern
State Farm Foundation
Jim & Raia Thomas
J. P. & Lavon Tucker
Warner Lambert Company
The Washington Foundation
Ethal Weir
Earl & Wilma Williams

PROGRESS CLUB
Donald C. Barton
Gerald & Bonnie Hyder
Ray & Debora Jeffers
Phillip & Peggy Malone
Dick & Betty McClurg
Calvin & Patsy Seecombe
Ron & Pat Thomas

ACHIEVERS CLUB
Roger & Kathy Anspach
Marly & Louise Ballard
BellSouth Corporation
Becky Bennett
Don & Judy Blake
Carol Bleich
Russ & Frances Bone
Jerry & Rita Brackney
Kathy Brittingham
James & Mildred Broome
James Brown '62
Budget Rent-A-Car Corporation
James & Linda Butterfield
Candace Cain
Garland & Jeanne Cain
Greg & Karen Campbell '85
Peggy Chittick
Edgar & Lucille Church
Cliff & Ina Clark
Ray & Barbara Clark
Lyle & Jane Clarke
Theo & Maxine Coleman
Godfrey & Barb Collins
Vivia Colson
Conral Corporation
Cooper Tire & Rubber Foundation
Alex & Marie Craig
William & Dorothy Crews
Wilford & Mary Culler
Don & Betty Davies
Gary & Dana Davis '76
Mark & Penny Davis
Roger & Barbara Davis
Steve & Debra Davis
Dan DeYoung
Herb & Charlotte Dean
Clark & Joanne Dennis
Ed & Delores Dickinson '79, '80
Mark & Kathy Dillard '78
Niles & Diana Dover
Dowagiac Church of Christ
Thomas & Joanne Duncan
Jack & Erma Duly
Charles & Marlene Dyer
Darral & Joy Emerson '68
Floyd & Beverly Fair
Dennis & Linda Finley
John Fisher
John & Agnes Flowers
Everett & Maxine Foster '83
Al & Suzanne Garner
Savage & Marrella Goff
Todd & Connie Graham '71
Howard & Joan Hageman
Ennis & Lynn Hamd
Ron & Kay Hammond
Walter & Maxine Harlan

William & Jean Harris
David & Deanna Harvil
Suzanne & Ruby Henderson
Al & Donna Hendrick
Norman & Marilyn Herron
Jeff & Paula Herron '75
Leslie & Iris Hinds
Dean & Thelma Hoggatt
Paul & Lena Hubbard
Charles & Pam Hyndman
J & L Specialty Prod. Foundation
Robert & Jane Jackson
Bernie & Mildred Jamison
David & Ruby Johnson
Dale & Barb Kelly
Pat & Jane Kirby
Dan & Shirley Leach '64, '63
Clarence & Jern Locke
Terry & Dawn Luxton '73, '77
Ray & Sharyn MacDonald '65
Dow Chemical
Wes & Kathryn Hendrick
Joseph & Cecil Mayo
Douglas & Cyndy McGrew
Eugene & Jean Morris
William & Barbara Morrow
Gene & Joan Mullins
Walter & Barbara Neid
James & Aileen Nicks
John & Barbara O'Rourke
Dean & Zan Oliver '73, '75
Gary & Cynthia Osborn
Rick & Barb Osborn
OXY USA Charitable Foundation
Lucien & Ida Palmer
Alan & Michele Bain
Marjorie Bash
Robert & Lucy Benham
Bill & Carolyn Bonifay
Gary & Rita Brewster
Bridgestone & Firestone Trust Fund
John & Rosemary Brown
Bobby Carter
Donald Carter, Jr. '64
Walter & Bonnie Carter
Jim & Nell Chamblee
Chrysler Corporation
Ralph & Lorraine Church
CSX Corporation
Jeff & Mollie DeBard
Chuck & Diane Devereaux
Eaton Corporation
Steve & Mildred Edkstein
Aaron & Rose Ellis '75
Ron & Cathy Englehart
Milton & Evelyn Fietcher
Gene & Peg Fowler
Wayne & Donna Francisco
Ouis & Irene Gastwood
Diane & Patty Hatfield
Tim & Donna Hickerson
James & Ruth Hoggatt
John & Vardena Ireland
Johnson & Johnson Company
Kellogg's of Battle Creek
Walter & Lottie Kos
Mike & Dawn Kurschat '86
Lake Orion Church of Christ
Lynn & Pat Leslie '60
Lincoln Park Church of Christ
Wilma Lutz
Jim & Carol McCartney '78
Midland Tire & Auto Service
Larry & Mary Moebis
National Bank of Detroit
Larry & Kay Norman
Rudy & Anna Northcutt
Northwest Church of Christ
Al & Ethel Oz
Mary Pearson
Plymouth Community United Way
Al & Marge Papp
Quinn & Peggy Reed
Tom & Diane Relling '80
Harry Riemenschneider
Robinson Construction
Santa Fe Pacific Foundation
Searle Charitable Trust
Shell Companies Foundation
Bill & Laverne Smith
Paul & Margaret Southern
State Farm Foundation
Jim & Raia Thomas
J. P. & Lavon Tucker
Warner Lambert Company
The Washington Foundation
Ethal Weir
Earl & Wilma Williams

EMMETT & RUTH MOBLEY
Joseph & Veneta Mofozo
Pauline Montgomery
Michael & Elsie Montgomery
John & Irene Moody
Harold & Leona Mullens
Leon & Emma Mullens '70
Lester Murrell
National Steel Corporation
Cyde & Carol Newton
Bill & Ruth Nichols
Ben & Susan Noah
Northwestern Group Marketing
Neil & Sharon Cherry
Graydon & Edna Chester
Bob & Judy Childers
Gerald & Joyce Childs
Christ Foundation
Don & Nancy Christenberry
Glenn Christenberry
Helmut & Sue Petrich
Paul & Georgia Phillips
Cecil & Lupe Phipps
Donald & Mary Pierson
William Potere '64
Mike & Renetta Proffitt '77
Alan & Janet Pythila '86
Charlotte Rawis
Lillian Reaume
Herbert & Alice Rodgers
Tony & Veronica Russo
Dennis & Cynthia Salsbury '66, '67
James & Betty Scott
Kevin & Lori Shaffer '82
Jim & Theresa Shiffert
Bruce Simmons
Tom & Anita Simpson
John & Clarence Sparkman
Steve & Kelly Sprague
Gay & Wynelle Spurgeon
Dick & Chiese Stephens
Mel & Diane Storm
Linda Stutts
Wladimir & Laverne Szych
Ed & Louise Tarrant
Joe & Kathy Terrell
David & Susan Thomas
Fred & Betty Trost
Louhou & Carolyn Tucker
Dick & Judy Tudrope
USX Foundation
David & Carol VanHooser
Gary & Jane Vaughn
Jim Vermillion
Iris Vinther
Jim & Janynie Vize
Wal-Mart Foundation
Mary Wallace
Al & Brenda Warner '65
Lila Warren
The St. Paul & Deborah Watkins '88
Robert & Elaine Wanzel '89
Robert & Chae Wertwath '89
Warren & Mary Etta Whitehaw
David & Evelyn Williams
Jerry & Gencie Williams
Rubye Williams
Glenn & Nita Wilson '72
Carl Woody
Gordon & Carole Wright
Joseph & Mattie Wright
Margaret Wright

EMMETT & RUTH MOBLEY
Joseph & Veneta Mofozo
Pauline Montgomery
Michael & Elsie Montgomery
John & Irene Moody
Harold & Leona Mullens
Leon & Emma Mullens '70
Lester Murrell
National Steel Corporation
Cyde & Carol Newton
Bill & Ruth Nichols
Ben & Susan Noah
Northwestern Group Marketing
Neil & Sharon Cherry
Graydon & Edna Chester
Bob & Judy Childers
Gerald & Joyce Childs
Christ Foundation
Don & Nancy Christenberry
Glenn Christenberry
Helmut & Sue Petrich
Paul & Georgia Phillips
Cecil & Lupe Phipps
Donald & Mary Pierson
William Potere '64
Mike & Renetta Proffitt '77
Alan & Janet Pythila '86
Charlotte Rawis
Lillian Reaume
Herbert & Alice Rodgers
Tony & Veronica Russo
Dennis & Cynthia Salsbury '66, '67
James & Betty Scott
Kevin & Lori Shaffer '82
Jim & Theresa Shiffert
Bruce Simmons
Tom & Anita Simpson
John & Clarence Sparkman
Steve & Kelly Sprague
Gay & Wynelle Spurgeon
Dick & Chiese Stephens
Mel & Diane Storm
Linda Stutts
Wladimir & Laverne Szych
Ed & Louise Tarrant
Joe & Kathy Terrell
David & Susan Thomas
Fred & Betty Trost
Louhou & Carolyn Tucker
Dick & Judy Tudrope
USX Foundation
David & Carol VanHooser
Gary & Jane Vaughn
Jim Vermillion
Iris Vinther
Jim & Janynie Vize
Wal-Mart Foundation
Mary Wallace
Al & Brenda Warner '65
Lila Warren
The St. Paul & Deborah Watkins '88
Robert & Elaine Wanzel '89
Robert & Chae Wertwath '89
Warren & Mary Etta Whitehaw
David & Evelyn Williams
Jerry & Gencie Williams
Rubye Williams
Glenn & Nita Wilson '72
Carl Woody
Gordon & Carole Wright
Joseph & Mattie Wright
Margaret Wright

EMMETT & RUTH MOBLEY
Joseph & Veneta Mofozo
Pauline Montgomery
Michael & Elsie Montgomery
John & Irene Moody
Harold & Leona Mullens
Leon & Emma Mullens '70
Lester Murrell
National Steel Corporation
Cyde & Carol Newton
Bill & Ruth Nichols
Ben & Susan Noah
Northwestern Group Marketing
Neil & Sharon Cherry
Graydon & Edna Chester
Bob & Judy Childers
Gerald & Joyce Childs
Christ Foundation
Don & Nancy Christenberry
Glenn Christenberry
Helmut & Sue Petrich
Paul & Georgia Phillips
Cecil & Lupe Phipps
Donald & Mary Pierson
William Potere '64
Mike & Renetta Proffitt '77
Alan & Janet Pythila '86
Charlotte Rawis
Lillian Reaume
Herbert & Alice Rodgers
Tony & Veronica Russo
Dennis & Cynthia Salsbury '66, '67
James & Betty Scott
Kevin & Lori Shaffer '82
Jim & Theresa Shiffert
Bruce Simmons
Tom & Anita Simpson
John & Clarence Sparkman
Steve & Kelly Sprague
Gay & Wynelle Spurgeon
Dick & Chiese Stephens
Mel & Diane Storm
Linda Stutts
Wladimir & Laverne Szych
Ed & Louise Tarrant
Joe & Kathy Terrell
David & Susan Thomas
Fred & Betty Trost
Louhou & Carolyn Tucker
Dick & Judy Tudrope
USX Foundation
David & Carol VanHooser
Gary & Jane Vaughn
Jim Vermillion
Iris Vinther
Jim & Janynie Vize
Wal-Mart Foundation
Mary Wallace
Al & Brenda Warner '65
Lila Warren
The St. Paul & Deborah Watkins '88
Robert & Elaine Wanzel '89
Robert & Chae Wertwath '89
Warren & Mary Etta Whitehaw
David & Evelyn Williams
Jerry & Gencie Williams
Rubye Williams
Glenn & Nita Wilson '72
Carl Woody
Gordon & Carole Wright
Joseph & Mattie Wright
Margaret Wright

EMMETT & RUTH MOBLEY
Joseph & Veneta Mofozo
Pauline Montgomery
Michael & Elsie Montgomery
John & Irene Moody
Harold & Leona Mullens
Leon & Emma Mullens '70
Lester Murrell
National Steel Corporation
Cyde & Carol Newton
Bill & Ruth Nichols
Ben & Susan Noah
Northwestern Group Marketing
Neil & Sharon Cherry
Graydon & Edna Chester
Bob & Judy Childers
Gerald & Joyce Childs
Christ Foundation
Don & Nancy Christenberry
Glenn Christenberry
Helmut & Sue Petrich
Paul & Georgia Phillips
Cecil & Lupe Phipps
Donald & Mary Pierson
William Potere '64
Mike & Renetta Proffitt '77
Alan & Janet Pythila '86
Charlotte Rawis
Lillian Reaume
Herbert & Alice Rodgers
Tony & Veronica Russo
Dennis & Cynthia Salsbury '66, '67
James & Betty Scott
Kevin & Lori Shaffer '82
Jim & Theresa Shiffert
Bruce Simmons
Tom & Anita Simpson
John & Clarence Sparkman
Steve & Kelly Sprague
Gay & Wynelle Spurgeon
Dick & Chiese Stephens
Mel & Diane Storm
Linda Stutts
Wladimir & Laverne Szych
Ed & Louise Tarrant
Joe & Kathy Terrell
David & Susan Thomas
Fred & Betty Trost
Louhou & Carolyn Tucker
Dick & Judy Tudrope
USX Foundation
David & Carol VanHooser
Gary & Jane Vaughn
Jim Vermillion
Iris Vinther
Jim & Janynie Vize
Wal-Mart Foundation
Mary Wallace
Al & Brenda Warner '65
Lila Warren
The St. Paul & Deborah Watkins '88
Robert & Elaine Wanzel '89
Robert & Chae Wertwath '89
Warren & Mary Etta Whitehaw
David & Evelyn Williams
Jerry & Gencie Williams
Rubye Williams
Glenn & Nita Wilson '72
Carl Woody
Gordon & Carole Wright
Joseph & Mattie Wright
Margaret Wright

EMMETT & RUTH MOBLEY
Joseph & Veneta Mofozo
Pauline Montgomery
Michael & Elsie Montgomery
John & Irene Moody
Harold & Leona Mullens
Leon & Emma Mullens '70
Lester Murrell
National Steel Corporation
Cyde & Carol Newton
Bill & Ruth Nichols
Ben & Susan Noah
Northwestern Group Marketing
Neil & Sharon Cherry
Graydon & Edna Chester
Bob & Judy Childers
Gerald & Joyce Childs
Christ Foundation
Don & Nancy Christenberry
Glenn Christenberry
Helmut & Sue Petrich
Paul & Georgia Phillips
Cecil & Lupe Phipps
Donald & Mary Pierson
William Potere '64
Mike & Renetta Proffitt '77
Alan & Janet Pythila '86
Charlotte Rawis
Lillian Reaume
Herbert & Alice Rodgers
Tony & Veronica Russo
Dennis & Cynthia Salsbury '66, '67
James & Betty Scott
Kevin & Lori Shaffer '82
Jim & Theresa Shiffert
Bruce Simmons
Tom & Anita Simpson
John & Clarence Sparkman
Steve & Kelly Sprague
Gay & Wynelle Spurgeon
Dick & Chiese Stephens
Mel & Diane Storm
Linda Stutts
Wladimir & Laverne Szych
Ed & Louise Tarrant
Joe & Kathy Terrell
David & Susan Thomas
Fred & Betty Trost
Louhou & Carolyn Tucker
Dick & Judy Tudrope
USX Foundation
David & Carol VanHooser
Gary & Jane Vaughn
Jim Vermillion
Iris Vinther
Jim & Janynie Vize
Wal-Mart Foundation
Mary Wallace
Al & Brenda Warner '65
Lila Warren
The St. Paul & Deborah Watkins '88
Robert & Elaine Wanzel '89
Robert & Chae Wertwath '89
Warren & Mary Etta Whitehaw
David & Evelyn Williams
Jerry & Gencie Williams
Rubye Williams
Glenn & Nita Wilson '72
Carl Woody
Gordon & Carole Wright
Joseph & Mattie Wright
Margaret Wright

EMMETT & RUTH MOBLEY
Joseph & Veneta Mofozo
Pauline Montgomery
Michael & Elsie Montgomery
John & Irene Moody
Harold & Leona Mullens
Leon & Emma Mullens '70
Lester Murrell
National Steel Corporation
Cyde & Carol Newton
Bill & Ruth Nichols
Ben & Susan Noah
Northwestern Group Marketing
Neil & Sharon Cherry
Graydon & Edna Chester
Bob & Judy Childers
Gerald & Joyce Childs
Christ Foundation
Don & Nancy Christenberry
Glenn Christenberry
Helmut & Sue Petrich
Paul & Georgia Phillips
Cecil & Lupe Phipps
Donald & Mary Pierson
William Potere '64
Mike & Renetta Proffitt '77
Alan & Janet Pythila '86
Charlotte Rawis
Lillian Reaume
Herbert & Alice Rodgers
Tony & Veronica Russo
Dennis & Cynthia Salsbury '66, '67
James & Betty Scott
Kevin & Lori Shaffer '82
Jim & Theresa Shiffert
Bruce Simmons
Tom & Anita Simpson
John & Clarence Sparkman
Steve & Kelly Sprague
Gay & Wynelle Spurgeon
Dick & Chiese Stephens
Mel & Diane Storm
Linda Stutts
Wladimir & Laverne Szych
Ed & Louise Tarrant
Joe & Kathy Terrell
David & Susan Thomas
Fred & Betty Trost
Louhou & Carolyn Tucker
Dick & Judy Tudrope
USX Foundation
David & Carol VanHooser
Gary & Jane Vaughn
Jim Vermillion
Iris Vinther
Jim & Janynie Vize
Wal-Mart Foundation
Mary Wallace
Al & Brenda Warner '65
Lila Warren
The St. Paul & Deborah Watkins '88
Robert & Elaine Wanzel '89
Robert & Chae Wertwath '89
Warren & Mary Etta Whitehaw
David & Evelyn Williams
Jerry & Gencie Williams
Rubye Williams
Glenn & Nita Wilson '72
Carl Woody
Gordon & Carole Wright
Joseph & Mattie Wright
Margaret Wright

EMMETT & RUTH MOBLEY
Joseph & Veneta Mofozo
Pauline Montgomery
Michael & Elsie Montgomery
John & Irene Moody
Harold & Leona Mullens
Leon & Emma Mullens '70
Lester Murrell
National Steel Corporation
Cyde & Carol Newton
Bill & Ruth Nichols
Ben & Susan Noah
Northwestern Group Marketing
Neil & Sharon Cherry
Graydon & Edna Chester
Bob & Judy Childers
Gerald & Joyce Childs
Christ Foundation
Don & Nancy Christenberry
Glenn Christenberry
Helmut & Sue Petrich
Paul & Georgia Phillips
Cecil & Lupe Phipps
Donald & Mary Pierson
William Potere '64
Mike & Renetta Proffitt '77
Alan & Janet Pythila '86
Charlotte Rawis
Lillian Reaume
Herbert & Alice Rodgers
Tony & Veronica Russo
Dennis & Cynthia Salsbury '66, '67
James & Betty Scott
Kevin & Lori Shaffer '82
Jim & Theresa Shiffert
Bruce Simmons
Tom & Anita Simpson
John & Clarence Sparkman
Steve & Kelly Sprague
Gay & Wynelle Spurgeon
Dick & Chiese Stephens
Mel & Diane Storm
Linda Stutts
Wladimir & Laverne Szych
Ed & Louise Tarrant
Joe & Kathy Terrell
David & Susan Thomas
Fred & Betty Trost
Louhou & Carolyn Tucker
Dick & Judy Tudrope
USX Foundation
David & Carol VanHooser
Gary & Jane Vaughn
Jim Vermillion
Iris Vinther
Jim & Janynie Vize
Wal-Mart Foundation
Mary Wallace
Al & Brenda Warner '65
Lila Warren
The St. Paul & Deborah Watkins '88
Robert & Elaine Wanzel '89
Robert & Chae Wertwath '89
Warren & Mary Etta Whitehaw
David & Evelyn Williams
Jerry & Gencie Williams
Rubye Williams
Glenn & Nita Wilson '72
Carl Woody
Gordon & Carole Wright
Joseph & Mattie Wright
Margaret Wright

Bruce & Judy Fouk
Thomas & Juanita Fralick
James & Faye Frampton
Anna Francisco
Michael & Marilyn Canterbury
Earl & Janet Carpenter
Paul & Angela Carpenter '85, '84
Slam & Donna Carpenter
William & Wanda Carroll
Ed & Joy Carter
Jeff & Jean Carter '84
Jim & Betty Casey '82
Leo & Ruth Casey
Bob & Jan Chaffin
John & Mary Chalk
Neil & Sharon Cherry
Graydon & Edna Chester
Bob & Judy Childers
Gerald & Joyce Childs
Christ Foundation
Don & Nancy Christenberry
Glenn Christenberry
Helmut & Sue Petrich
Paul & Georgia Phillips
Cecil & Lupe Phipps
Donald & Mary Pierson
William Potere '64
Mike & Renetta Proffitt '77
Alan & Janet Pythila '86
Charlotte Rawis
Lillian Reaume
Herbert & Alice Rodgers
Tony & Veronica Russo
Dennis & Cynthia Salsbury '66, '67
James & Betty Scott
Kevin & Lori Shaffer '82
Jim & Theresa Shiffert
Bruce Simmons
Tom & Anita Simpson
John & Clarence Sparkman
Steve & Kelly Sprague
Gay & Wynelle Spurgeon
Dick & Chiese Stephens
Mel & Diane Storm
Linda Stutts
Wladimir & Laverne Szych
Ed & Louise Tarrant
Joe & Kathy Terrell
David & Susan Thomas
Fred & Betty Trost
Louhou & Carolyn Tucker
Dick & Judy Tudrope
USX Foundation
David & Carol VanHooser
Gary & Jane Vaughn
Jim Vermillion
Iris Vinther
Jim & Janynie Vize
Wal-Mart Foundation
Mary Wallace
Al & Brenda Warner '65
Lila Warren
The St. Paul & Deborah Watkins '88
Robert & Elaine Wanzel '89
Robert & Chae Wertwath '89
Warren & Mary Etta Whitehaw
David & Evelyn Williams
Jerry & Gencie Williams
Rubye Williams
Glenn & Nita Wilson '72
Carl Woody
Gordon & Carole Wright
Joseph & Mattie Wright
Margaret Wright

Bruce & Judy Fouk
Thomas & Juanita Fralick
James & Faye Frampton
Anna Francisco
Michael & Marilyn Canterbury
Earl & Janet Carpenter
Paul & Angela Carpenter '85, '84
Slam & Donna Carpenter
William & Wanda Carroll
Ed & Joy Carter
Jeff & Jean Carter '84
Jim & Betty Casey '82
Leo & Ruth Casey
Bob & Jan Chaffin
John & Mary Chalk
Neil & Sharon Cherry
Graydon & Edna Chester
Bob & Judy Childers
Gerald & Joyce Childs
Christ Foundation
Don & Nancy Christenberry
Glenn Christenberry
Helmut & Sue Petrich
Paul & Georgia Phillips
Cecil & Lupe Phipps
Donald & Mary Pierson
William Potere '64
Mike & Renetta Proffitt '77
Alan & Janet Pythila '86
Charlotte Rawis
Lillian Reaume
Herbert & Alice Rodgers
Tony & Veronica Russo
Dennis & Cynthia Salsbury '66, '67
James & Betty Scott
Kevin & Lori Shaffer '82
Jim & Theresa Shiffert
Bruce Simmons
Tom & Anita Simpson
John & Clarence Sparkman
Steve & Kelly Sprague
Gay & Wynelle Spurgeon
Dick & Chiese Stephens
Mel & Diane Storm
Linda Stutts
Wladimir & Laverne Szych
Ed & Louise Tarrant
Joe & Kathy Terrell
David & Susan Thomas
Fred & Betty Trost
Louhou & Carolyn Tucker
Dick & Judy Tudrope
USX Foundation
David & Carol VanHooser
Gary & Jane Vaughn
Jim Vermillion
Iris Vinther
Jim & Janynie Vize
Wal-Mart Foundation
Mary Wallace
Al & Brenda Warner '65
Lila Warren
The St. Paul & Deborah Watkins '88
Robert & Elaine Wanzel '89
Robert & Chae Wertwath '89
Warren & Mary Etta Whitehaw
David & Evelyn Williams
Jerry & Gencie Williams
Rubye Williams
Glenn & Nita Wilson '72
Carl Woody
Gordon & Carole Wright
Joseph & Mattie Wright
Margaret Wright

Bruce & Judy Fouk
Thomas & Juanita Fralick
James & Faye Frampton
Anna Francisco
Michael & Marilyn Canterbury
Earl & Janet Carpenter
Paul & Angela Carpenter '85, '84
Slam & Donna Carpenter
William & Wanda Carroll
Ed & Joy Carter
Jeff & Jean Carter '84
Jim & Betty Casey '82
Leo & Ruth Casey
Bob & Jan Chaffin
John & Mary Chalk
Neil & Sharon Cherry
Graydon & Edna Chester
Bob & Judy Childers
Gerald & Joyce Childs
Christ Foundation
Don & Nancy Christenberry
Glenn Christenberry
Helmut & Sue Petrich
Paul & Georgia Phillips
Cecil & Lupe Phipps
Donald & Mary Pierson
William Potere '64
Mike & Renetta Proffitt '77
Alan & Janet Pythila '86
Charlotte Rawis
Lillian Reaume
Herbert & Alice Rodgers
Tony & Veronica Russo
Dennis & Cynthia Salsbury '66, '67
James & Betty Scott
Kevin & Lori Shaffer '82
Jim & Theresa Shiffert
Bruce Simmons
Tom & Anita Simpson
John & Clarence Sparkman
Steve & Kelly Sprague
Gay & Wynelle Spurgeon
Dick & Chiese Stephens
Mel & Diane Storm
Linda Stutts
Wladimir & Laverne Szych
Ed & Louise Tarrant
Joe & Kathy Terrell
David & Susan Thomas
Fred & Betty Trost
Louhou & Carolyn Tucker
Dick & Judy Tudrope
USX Foundation
David & Carol VanHooser
Gary & Jane Vaughn
Jim Vermillion
Iris Vinther
Jim & Janynie Vize
Wal-Mart Foundation
Mary Wallace
Al & Brenda Warner '65
Lila Warren
The St. Paul & Deborah Watkins '88
Robert & Elaine Wanzel '89
Robert & Chae Wertwath '89
Warren & Mary Etta Whitehaw
David & Evelyn Williams
Jerry & Gencie Williams
Rubye Williams
Glenn & Nita Wilson '72
Carl Woody
Gordon & Carole Wright
Joseph & Mattie Wright
Margaret Wright

Bruce & Judy Fouk
Thomas & Juanita Fralick
James & Faye Frampton
Anna Francisco
Michael & Marilyn Canterbury
Earl & Janet Carpenter
Paul & Angela Carpenter '85, '84
Slam & Donna Carpenter
William & Wanda Carroll
Ed & Joy Carter
Jeff & Jean Carter '84
Jim & Betty Casey '82
Leo & Ruth Casey
Bob & Jan Chaffin
John & Mary Chalk
Neil & Sharon Cherry
Graydon & Edna Chester
Bob & Judy Childers
Gerald & Joyce Childs
Christ Foundation
Don & Nancy Christenberry
Glenn Christenberry
Helmut & Sue Petrich
Paul & Georgia Phillips
Cecil & Lupe Phipps
Donald & Mary Pierson
William Potere '64
Mike & Renetta Proffitt '77
Alan & Janet Pythila '86
Charlotte Rawis
Lillian Reaume
Herbert & Alice Rodgers
Tony & Veronica Russo
Dennis & Cynthia Salsbury '66, '67
James & Betty Scott
Kevin & Lori Shaffer '82
Jim & Theresa Shiffert
Bruce Simmons
Tom & Anita Simpson
John & Clarence Sparkman
Steve & Kelly Sprague
Gay & Wynelle Spurgeon
Dick & Chiese Stephens
Mel & Diane Storm
Linda Stutts
Wladimir & Laverne Szych
Ed & Louise Tarrant
Joe & Kathy Terrell
David & Susan Thomas
Fred & Betty Trost
Louhou & Carolyn Tucker
Dick & Judy Tudrope
USX Foundation
David & Carol VanHooser
Gary & Jane Vaughn
Jim Vermillion
Iris Vinther
Jim & Janynie Vize
Wal-Mart Foundation
Mary Wallace
Al & Brenda Warner '65
Lila Warren
The St. Paul & Deborah Watkins '88
Robert & Elaine Wanzel '89
Robert & Chae Wertwath '89
Warren & Mary Etta Whitehaw
David & Evelyn Williams
Jerry & Gencie Williams
Rubye Williams
Glenn & Nita Wilson '72
Carl Woody
Gordon & Carole Wright
Joseph & Mattie Wright
Margaret Wright

Bruce & Judy Fouk
Thomas & Juanita Fralick
James & Faye Frampton
Anna Francisco
Michael & Marilyn Canterbury
Earl & Janet Carpenter
Paul & Angela Carpenter '85, '84
Slam & Donna Carpenter
William & Wanda Carroll
Ed & Joy Carter
Jeff & Jean Carter '84
Jim & Betty Casey '82
Leo & Ruth Casey
Bob & Jan Chaffin
John & Mary Chalk
Neil & Sharon Cherry
Graydon & Edna Chester
Bob & Judy Childers
Gerald & Joyce Childs
Christ Foundation
Don & Nancy Christenberry
Glenn Christenberry
Helmut & Sue Petrich
Paul & Georgia Phillips
Cecil & Lupe Phipps
Donald & Mary Pierson
William Potere '64
Mike & Renetta Proffitt '77
Alan & Janet Pythila '86
Charlotte Rawis
Lillian Reaume
Herbert & Alice Rodgers
Tony & Veronica Russo
Dennis & Cynthia Salsbury '66, '67
James & Betty Scott
Kevin & Lori Shaffer '82
Jim & Theresa Shiffert
Bruce Simmons
Tom & Anita Simpson
John & Clarence Sparkman
Steve & Kelly Sprague
Gay & Wynelle Spurgeon
Dick & Chiese Stephens
Mel & Diane Storm
Linda Stutts
Wladimir & Laverne Szych
Ed & Louise Tarrant
Joe & Kathy Terrell
David & Susan Thomas
Fred & Betty Trost
Louhou & Carolyn Tucker
Dick & Judy Tudrope
USX Foundation
David & Carol VanHooser
Gary & Jane Vaughn
Jim Vermillion
Iris Vinther
Jim & Janynie Vize
Wal-Mart Foundation
Mary Wallace
Al & Brenda Warner '65
Lila Warren
The St. Paul & Deborah Watkins '88
Robert & Elaine Wanzel '89
Robert & Chae Wertwath '89
Warren & Mary Etta Whitehaw
David & Evelyn Williams
Jerry & Gencie Williams
Rubye Williams
Glenn & Nita Wilson '72
Carl Woody
Gordon & Carole Wright
Joseph & Mattie Wright
Margaret Wright

Bruce & Judy Fouk
Thomas & Juanita Fralick
James & Faye Frampton
Anna Francisco
Michael & Marilyn Canterbury
Earl & Janet Carpenter
Paul & Angela Carpenter '85, '84
Slam & Donna Carpenter
William & Wanda Carroll
Ed & Joy Carter
Jeff & Jean Carter '84
Jim & Betty Casey '82
Leo & Ruth Casey
Bob & Jan Chaffin
John & Mary Chalk
Neil & Sharon Cherry
Graydon & Edna Chester
Bob & Judy Childers
Gerald & Joyce Childs
Christ Foundation
Don & Nancy Christenberry
Glenn Christenberry
Helmut & Sue Petrich
Paul & Georgia Phillips
Cecil & Lupe Phipps
Donald & Mary Pierson
William Potere '64
Mike & Renetta Proffitt '77
Alan & Janet Pythila '86
Charlotte Rawis
Lillian Reaume
Herbert & Alice Rodgers
Tony & Veronica Russo
Dennis & Cynthia Salsbury '66, '67
James & Betty Scott
Kevin & Lori Shaffer '82
Jim & Theresa Shiffert
Bruce Simmons
Tom & Anita Simpson
John & Clarence Sparkman
Steve & Kelly Sprague
Gay & Wynelle Spurgeon
Dick & Chiese Stephens
Mel & Diane Storm
Linda Stutts
Wladimir & Laverne Szych
Ed & Louise Tarrant
Joe & Kathy Terrell
David & Susan Thomas
Fred & Betty Trost
Louhou & Carolyn Tucker
Dick & Judy Tudrope
USX Foundation
David & Carol VanHooser
Gary & Jane Vaughn
Jim Vermillion
Iris Vinther
Jim & Janynie Vize
Wal-Mart Foundation
Mary Wallace
Al & Brenda Warner '65
Lila Warren
The St. Paul & Deborah Watkins '88
Robert & Elaine Wanzel '89
Robert & Chae Wertwath '89
Warren & Mary Etta Whitehaw
David & Evelyn Williams
Jerry & Gencie Williams
Rubye Williams
Glenn & Nita Wilson '72
Carl Woody
Gordon & Carole Wright
Joseph & Mattie Wright
Margaret Wright

Bruce & Judy Fouk
Thomas & Juanita Fralick
James & Faye Frampton
Anna Francisco
Michael & Marilyn Canterbury
Earl & Janet Carpenter
Paul & Angela Carpenter '85, '84
Slam & Donna Carpenter
William & Wanda Carroll
Ed & Joy Carter
Jeff & Jean Carter '84
Jim & Betty Casey '82
Leo & Ruth Casey
Bob & Jan Chaffin
John & Mary Chalk
Neil & Sharon Cherry
Graydon & Edna Chester
Bob & Judy Childers
Gerald & Joyce Childs
Christ Foundation
Don & Nancy Christenberry
Glenn Christenberry
Helmut & Sue Petrich
Paul & Georgia Phillips
Cecil & Lupe Phipps
Donald & Mary Pierson
William Potere '64
Mike & Renetta Proffitt '77
Alan & Janet Pythila '86
Charlotte Rawis
Lillian Reaume
Herbert & Alice Rodgers
Tony & Veronica Russo
Dennis & Cynthia Salsbury '66, '67
James & Betty Scott
Kevin & Lori Shaffer '82
Jim & Theresa Shiffert
Bruce Simmons
Tom & Anita Simpson
John & Clarence Sparkman
Steve & Kelly Sprague
Gay & Wynelle Spurgeon
Dick & Chiese Stephens
Mel & Diane Storm
Linda Stutts
Wladimir & Laverne Szych
Ed & Louise Tarrant
Joe & Kathy Terrell
David & Susan Thomas
Fred & Betty Trost
Louhou & Carolyn Tucker
Dick & Judy Tudrope
USX Foundation
David & Carol VanHooser
Gary & Jane Vaughn
Jim Vermillion
Iris Vinther
Jim & Janynie Vize
Wal-Mart Foundation
Mary Wallace
Al & Brenda Warner '65
Lila Warren
The St. Paul & Deborah Watkins '88
Robert & Elaine Wanzel '89
Robert & Chae Wertwath '89
Warren & Mary Etta Whitehaw
David & Evelyn Williams
Jerry & Gencie Williams
Rubye Williams
Glenn & Nita Wilson '72
Carl Woody
Gordon & Carole Wright
Joseph & Mattie Wright
Margaret Wright

Bruce & Judy Fouk
Thomas & Juanita Fralick
James & Faye Frampton
Anna Francisco
Michael & Marilyn Canterbury
Earl & Janet Carpenter
Paul & Angela Carpenter '85, '84
Slam & Donna Carpenter
William & Wanda Carroll
Ed & Joy Carter
Jeff & Jean Carter '84
Jim & Betty Casey '82
Leo & Ruth Casey
Bob & Jan Chaffin
John & Mary Chalk
Neil & Sharon Cherry
Graydon & Edna Chester
Bob & Judy Childers
Gerald & Joyce Childs
Christ Foundation
Don & Nancy Christenberry
Glenn Christenberry
Helmut & Sue Petrich
Paul & Georgia Phillips
Cecil & Lupe Phipps
Donald & Mary Pierson
William Potere '64
Mike & Renetta Proffitt '77
Alan & Janet Pythila '86
Charlotte Rawis
Lillian Reaume
Herbert & Alice Rodgers
Tony & Veronica Russo
Dennis & Cynthia Salsbury '66, '67
James & Betty Scott
Kevin & Lori Shaffer '82
Jim & Theresa Shiffert
Bruce Simmons
Tom & Anita Simpson
John & Clarence Sparkman
Steve & Kelly Sprague
Gay & Wynelle Spurgeon
Dick & Chiese Stephens
Mel & Diane Storm
Linda Stutts
Wladimir & Laverne Szych
Ed & Louise Tarrant
Joe & Kathy Terrell
David & Susan Thomas
Fred & Betty Trost
Louhou & Carolyn Tucker
Dick & Judy Tudrope
USX Foundation
David & Carol VanHooser
Gary & Jane Vaughn
Jim Vermillion
Iris Vinther
Jim & Janynie Vize
Wal-Mart Foundation
Mary Wallace
Al & Brenda Warner '65
Lila Warren
The St. Paul & Deborah Watkins '88
Robert & Elaine Wanzel '89
Robert & Chae Wertwath '89
Warren & Mary Etta Whitehaw
David & Evelyn Williams
Jerry & Gencie Williams
Rubye Williams
Glenn & Nita Wilson '72
Carl Woody
Gordon & Carole Wright
Joseph & Mattie Wright
Margaret Wright

James & Lila Jones '67
Mary Jones
Mary J. Jones
Larry & Donna Joseph
Ray & Vera Juday
Michael & Betty Kaasz
Chet & Dee Kamphuis
James & Sue Kamradt
Lewis & Mary Karosky
Carla Keatbey
Dale & Maxine Keane
Warren Kendall, Jr. '70
Brad & Diana Kern '72, '71
Robert & Deirdre Kerszulis
Gary & Linda Kessler
Robert Kessler
Virgil & Loretta Kimbie
Joseph King
James & Margaret King
Larry & Pal King
Mike & Glenda King
Harold & Helen Kinrad
Bill & El Kirby
Tom & Sue Kirkland
Lewis & Gwen Kirkpatrick
Daisy Knickerbocker
Leonard & Fawn Knight
William & Jean Knoll
Terry & Sharon Kogowski
Ron & Frances Konratko
Linda Pans
Michael & Kellie Page
Bob & Sue Palm '64
Parris Chapel Church of Christ
Edward & Cindy Pariseau '80
Earl Parish
Dave & Linda Park '74
Dave & Marilyn Parks '93
Leo & Mary Parry
Scott & Kathleen Passon '73
Randy & Rebekah Pace '71
Rhea Patke
Anthony & Marilyn Patterson
Jeff & Lisa Pauls
Gordon & Carol Payne
Robert & Wanda Peace
Phil & Barbara Peasley
James & Evelyn Pendergraft
Ronald Pepper '69
Rob & Shauna Perez '90
Alan & Ruby Peterson
Robert Peterson
Philip Morris Inc.
A. D. & Sue Phillips
Brenda Phillips '77
Carson & Barb Phillips
Mary & Becky Phillips '88
William & Laverne Piagan
Lear & Lorine Pigg
Jeff & Sue Pippio '68
Patricia & Margaret Pike
Dwayne Pingson
Ladon Pitts
Laverne Pitts
Marcelle & Paul Pleasant '69, '70
Ina Pleasant
John & Helen Plummer
Thelma Poole
Kelli Potter '87
John & Orna Pounds
Margaret Powell
William & Peggy Powers
Doyce & Mary Freestridge
Audra Price
Bernard Price
Carl & Peggy Price
Dave & Sarah Province
Tim & Ivy Pruitt '82, '83
Greg & Pat Pugh '80
Gary & Dana Qualls '74
James & Phyllis Ragland
Charles & Shelly Ragland
Dennis & Vicki Rainsberger '76, '78
Robert & Ruth Rainsberger
Edith Ramey
James & Caye Randolph
Larry & Laura Raper '62
Don & Margaret Rashott
Gloria Ray
Jessie Lee Read
Jack & Joann Reed
Joe & Sarah Heckard
Priscilla Redmond '67
Rob & Karen Loshier '85
Ron & Betty Loshier '82, '81
Jesse & Cleen Lovelace
Dor

Wayne & Wilda Bryan
Gene Bryant
William Bryant
Kay Brzak
J.F. & Mildred Buckley
Mark & Bernice Buckley
Betty Buelow
Murray & Tessa Bullock '84
Susan Bullota
Robert Bullotta Family
Dominick & Catherine Bullotta
Dominick & Helen Bullotta
James Bullotta
Joyce Burg
Coy Burgess, Sr.
Ronnie & Laveta Burkett
Alma Burns
Ora & Pearl Burns
Fritz & Geneva Burris
Christy Burrow
Kenneth Burt
Evelyn Burnett
Bill Burton
Ruth Buschmann
Kevin & Kathy Bushre
Daniel & Kathleen Buss
Barbara Butler
Troy Butler
Shirley Jo Buzbee '77
Bernie & Betty Byrd
Rob & Kelli Byrd '78, '94
Vernice Byrd
Jim & Karen Cagnet
Scott & Jodi Cahill '87
Jerry & Judy Cain
Joe & Clarence Cain
Bob & Patsy Calkin
Bernie & Barb Callis
Stanley Calvin '83
James & Sandy Campbell
Bruce & Jeanne Canby '76
Jim & Cora Canterbury
Gerald & Gloria Carnago
John & Lisa Carpenter '83, '84
Ted & Sherri Carpenter '76, '74
Jimmy & Stephanie Carr
Anna Carter
Clarence & Eloise Carter
Leon Carter
Sylvester Carter
Donald & Lela Cash
Joseph & Beverly Cassidy '72
Herbert & Jo Cat
Oscar & Dottie Chaffin
Gwen Chamberlain
Andy Chan '92
Gene Chapman '68
Donald & Judy Charbonneau
Gerald & Ruth Charron
Eva Cheney
Rick & Christine Chelias
Chevron U.S.A. Inc.
Ron & Karen Chidester
James Chitwood
Jo Choate
David & Karen Christian '90, '91
Hilma Christy
Bob & Lou Church
Ed & Cindy Church '63
Church of Christ
Corgo Petroleum Corporation
Bill & Nancy Clark
Kathy Clark
Thomas & Alice Clark
William & Marie Clary '66
Bill & Sally Cleghorn
Loren & Elaine Clemence
Bill & Mary Coats
Marion & Martha Coats
Veronica Cobb '89
Willie & Wilhel Cobb
Clifford & Helen Collier
Ken & Cheryl Coggeshall '75
David & Barbara Cole
Ora Cole
Richard & Dawn Coleman
William & Mildred Coleman
Eva Collier
David & Barbara Collins
Ron & Kay Collins
Violet Collinson
Nancy Comeague
Leo & Barbara Conkin
Vera Connel
Maurice & Bev Conner '79
Herma Conrad
James Conroy Family
Ron & Tanya Corntent '81
Alison Cook
Gary & Sandy Cooper
Cecil & Karen Cordle
Jelleen Corley
Dan & Carolyn Corp '87, '86
Richard Corso
David & Jeniece Corwin '82
Teresa Cottrell
Vi & Pat Covington
Jack & Leora Coward
Claude Cox
J. B. & Evelyn Cox
John Cox
Ernest & Lydia Cram
Ken & Kim Cramer
and Lester Craven
Jennie Cresap
Phil & Shelley Crews '75
Thomas & Patricia Criley
Marcus Criswell
Earl & Helen Crocker
Forest & Janita Crooks
Paul & Teri Cross '62
Leo & Mary Crowder
Brian Crowley
David & Lori Cumming
Gary & Virginia Cummins '78
Robert & Gertrude Cummings
Dorothy Cunningham
Dovie Curry
Bill & Annette Dabbs
Alvin Dale
Daniel & Hilda Dameron
Bonnie Daniel '86
Bill & Karen Danz
Rachel Dare
Mary Darnall
Dortha Darnell
Carl & Esther Dasen
Pal Dauenbach
Marveline Davey
Kirt & Lana David
Judy Davidson
Brad & Kris Davidson '80
Mai Dell Davidson
Bryan Davies '91
John & Michal Davis '68
Michael Davis '77
Norman & Marie Davis
Ois & Myrtle Davis
Robert & Jeanne Davis
Roger & Mary Davis '94
Veronica Davis '89
Virginia Davis
Kris & Shavni Daw
Thornion & Laura Dawson
William & Shirley Daymon
James Deavours
Dale & Sandra Delavergne
James & Kathleen Derickson
Mike & Vicki Derrenberger
Bert & Helen Devereaux
John DiBenedo
William & Nanelle DiCanni
Mary Ella Dick
John Dickerson
John Dickerson, Jr.
Dennis & Paula Dickey '88

Leonard & Irma Dickinson
Kathleen Goynes
Paul Graele, Jr.
Carl Grassl
Brad & Karen Grate '78
Rick & Joyce Gravelle
Robert & Kathy Dittrich
Murray & Kim Dixon
James & Vicki Doederlein '79
Stephen & Ann Donawick
John Donato
Barbara Donovan
Jim & Colleen Greenfield
George & Carolyn Gregg
Benny & Vera Grice '70
Jim & Kathy Griffin
June Griffin
Tom Griffin
Jack & Crystal Grizzell
Todd & Carla Grizzell '86
Reid Grooms
Tim & Sonia Gross '84
Grotz Family
Elzora Gunels
Gilbert & Barbara Guymre
Vivian Haan
Donald & Shirley Haddix
Wayne & Ava Dunn
Bruce & Sara Dusterhoft
Richard & Susan Dworkin
Larry & Diane Dye '75
Doug & Lynn Dye '76
Gertrude Dykes
Latina Dykes
Dan & Kelly Ealey '83, '84
Michael & Carolyn Eaton
Mary Eberlein
Edgar & Roberta Edens
Arnold & Mary Edwards
Barbara Edwards
Gale Edwards '67
Hope Edwards
Mary Edwards
Russell & Naomi Edwards
Dorothy Elbrader
James & Lynn Elkins '65
Bill & Pauline Ell
Eula Ellis
Evelyn Ellis
Larry & Diane Ellison
Bey Eirod '78
Opal Eirod
Greg & Janice Emerson '78
Don & Lynn England
Don Epperson '68
Lillie Mae Erwin
Loy & Nita Eubanks
Bruce & Allena Evans
Dennis & Sue Evans
Jonathan & Becky Evans
Richard Evans '67
Pat & Beatrice Eveland
Roy & Marian Ezell
Joe & Veda Fabry
Delbert Fall
Hagar Fallis
Irene Fanson
Dora Farmington
Overton Faulkner
Dan & Sarah Faulkner
Tony Fiasco
Grace Fehrenbaker
Joy Feldkamp
Carl & Sue Felner
Jerry & Marilyn Felts
Mike & Pat Ferrari
Eike Ferris
Fidelity Bank
David & Linda Fields '65
Nellie Hill
Franklin & Sandy Finkenbinder
First Bank of Concord, N.A.
Bill & Harriett Fisher
Herbert & Carol Hendon
Wes & Debbie Hendrick '80
Kenneth & Linda Hendrix '61
Gerald & Donna Henriksson
Allen & Barbara Henry
Mark & Leslie Henry
Walter & Mary Henry
Jack & Mary Henson
Ronald & Betty Henson
Brad & Cathi Herman '87
Cleo Herrin
Alice Hofer
Marion & Phyllis Hetrick
Greg & Alison Hewitt '74
Derrin & Nathalia Hiatt
Al & Kym Hibbard '78
Walter & Marie Hibbard
Ralph Hibbard
Clarence Hibbs
Hallie & Annette Hickerson
Samella Jones
Dorothy Jordan
Penny Judd
Barbara Justin
Mike & Elaine Justus
K Mart Corporation
Francis & Decie Kadil
Thomas Higgins
Mike & Barbara Kampa
Delores Kamphuis
Chris & Karla Kamrada '86
Dale & Connie Karhoff
Webb & Grace Katter
Betty Kauffman
Joe & Rowena Kays
Helen & Kim Gaither
Lewis & Dianna Hinson '67, '68
Jeff & Lori Gallatin
Morris Hinson '64
Bill & Pat Hitchcock
Rawdon & Betty Hobbie
Paul Hobbs
Ruth Hodge
Samuel & Lizzie Hodge
Edward & Linda Hodgens
Bruce Hodgson
Mena Hoeller
Randy & Jan Hoffman '77
John & Shari Hogg '93
Ronald & Patricia Gawkik
Gary Geauvreau
Edward & Betty Gentry
Hae Gentry
James & Patsy Gentry
Ruth Gentry
Murrell & Barb Gerald
Patty Gerth
Thomas & Eleanor Gettings '78
Mary Getzelman
Loren & Iola Gieger
Herman Griffin
Duane & Shirley Gillen
Jean Gillespie
Virginia Gillette
Marlin & Darlene Gilliland '82, '83
Michael & Diane Gilliland
Ramona Gillock
Steven & Linda Gilstrap
Roy & Louise Gist
Jerry & Joan Glasser
Samuel & Beaulah Glazier
Clara Glenn
Wayne & Wilma Glover
Joyce Gobel
Bette Huckaby
Shane & Michele Godmere '91
Jim & Karen Goff '78, '79
Teasda Goldade
Charles Gonder
Richard & Carolyn Goodlet
Richard & Jennie Lynn Goodwin '67, '66
Bob & Terri Hull '82, '81
Bill Humble
John & April Humphrey
Howard & Patricia Hunt

Margaret Gossett
Kathleen Goynes
Paul Graele, Jr.
Carl Grassl
Brad & Karen Grate '78
Rick & Joyce Gravelle
Robert & Kathy Dittrich
Murray & Kim Dixon
James & Vicki Doederlein '79
Stephen & Ann Donawick
John Donato
Barbara Donovan
Jim & Colleen Greenfield
George & Carolyn Gregg
Benny & Vera Grice '70
Jim & Kathy Griffin
June Griffin
Tom Griffin
Jack & Crystal Grizzell
Todd & Carla Grizzell '86
Reid Grooms
Tim & Sonia Gross '84
Grotz Family
Elzora Gunels
Gilbert & Barbara Guymre
Vivian Haan
Donald & Shirley Haddix
Wayne & Ava Dunn
Bruce & Sara Dusterhoft
Richard & Susan Dworkin
Larry & Diane Dye '75
Doug & Lynn Dye '76
Gertrude Dykes
Latina Dykes
Dan & Kelly Ealey '83, '84
Michael & Carolyn Eaton
Mary Eberlein
Edgar & Roberta Edens
Arnold & Mary Edwards
Barbara Edwards
Gale Edwards '67
Hope Edwards
Mary Edwards
Russell & Naomi Edwards
Dorothy Elbrader
James & Lynn Elkins '65
Bill & Pauline Ell
Eula Ellis
Evelyn Ellis
Larry & Diane Ellison
Bey Eirod '78
Opal Eirod
Greg & Janice Emerson '78
Don & Lynn England
Don Epperson '68
Lillie Mae Erwin
Loy & Nita Eubanks
Bruce & Allena Evans
Dennis & Sue Evans
Jonathan & Becky Evans
Richard Evans '67
Pat & Beatrice Eveland
Roy & Marian Ezell
Joe & Veda Fabry
Delbert Fall
Hagar Fallis
Irene Fanson
Dora Farmington
Overton Faulkner
Dan & Sarah Faulkner
Tony Fiasco
Grace Fehrenbaker
Joy Feldkamp
Carl & Sue Felner
Jerry & Marilyn Felts
Mike & Pat Ferrari
Eike Ferris
Fidelity Bank
David & Linda Fields '65
Nellie Hill
Franklin & Sandy Finkenbinder
First Bank of Concord, N.A.
Bill & Harriett Fisher
Herbert & Carol Hendon
Wes & Debbie Hendrick '80
Kenneth & Linda Hendrix '61
Gerald & Donna Henriksson
Allen & Barbara Henry
Mark & Leslie Henry
Walter & Mary Henry
Jack & Mary Henson
Ronald & Betty Henson
Brad & Cathi Herman '87
Cleo Herrin
Alice Hofer
Marion & Phyllis Hetrick
Greg & Alison Hewitt '74
Derrin & Nathalia Hiatt
Al & Kym Hibbard '78
Walter & Marie Hibbard
Ralph Hibbard
Clarence Hibbs
Hallie & Annette Hickerson
Samella Jones
Dorothy Jordan
Penny Judd
Barbara Justin
Mike & Elaine Justus
K Mart Corporation
Francis & Decie Kadil
Thomas Higgins
Mike & Barbara Kampa
Delores Kamphuis
Chris & Karla Kamrada '86
Dale & Connie Karhoff
Webb & Grace Katter
Betty Kauffman
Joe & Rowena Kays
Helen & Kim Gaither
Lewis & Dianna Hinson '67, '68
Jeff & Lori Gallatin
Morris Hinson '64
Bill & Pat Hitchcock
Rawdon & Betty Hobbie
Paul Hobbs
Ruth Hodge
Samuel & Lizzie Hodge
Edward & Linda Hodgens
Bruce Hodgson
Mena Hoeller
Randy & Jan Hoffman '77
John & Shari Hogg '93
Ronald & Patricia Gawkik
Gary Geauvreau
Edward & Betty Gentry
Hae Gentry
James & Patsy Gentry
Ruth Gentry
Murrell & Barb Gerald
Patty Gerth
Thomas & Eleanor Gettings '78
Mary Getzelman
Loren & Iola Gieger
Herman Griffin
Duane & Shirley Gillen
Jean Gillespie
Virginia Gillette
Marlin & Darlene Gilliland '82, '83
Michael & Diane Gilliland
Ramona Gillock
Steven & Linda Gilstrap
Roy & Louise Gist
Jerry & Joan Glasser
Samuel & Beaulah Glazier
Clara Glenn
Wayne & Wilma Glover
Joyce Gobel
Bette Huckaby
Shane & Michele Godmere '91
Jim & Karen Goff '78, '79
Teasda Goldade
Charles Gonder
Richard & Carolyn Goodlet
Richard & Jennie Lynn Goodwin '67, '66
Bob & Terri Hull '82, '81
Bill Humble
John & April Humphrey
Howard & Patricia Hunt

Lynn Hunt '62
Terry & Ruth Hunt
Bob & Shirley Hunter
Bruce & Edie Hurley '84
Darrell & Margaret Hutchens
Ray & Bertha Hyder
Tamara Iacobellis
Larry & Molly Ice '75
Lionie & Sherry Inrke
Alice Ince
Mary E. Green
Oliver & Darlene Green
Jim & Colleen Greenfield
George & Carolyn Gregg
Benny & Vera Grice '70
Jim & Kathy Griffin
June Griffin
George & Denise Jackson
Wade & Karen Jackson '87
Peggy Jackson
Bill & Carol James
Craig & Mary Jones
Ed & Pam Janssen
Lynn Jaynes
Janice Jenkins '72
Gerald & Susan Jenkins '67
Jess N. Legg, III
Mary Jette
Fred & Alice Jewell
Paul & Kellie Jewett '86
Roger & Dorothy Jewett
Mary Jiles
Fred Johns
Billie Johnson
Dan & Kelly Johnson
Gary & Diana Johnson
Jack & Laveida Johnson
Jean Johnson
Ben Lai
Carl & Evelyn Laidler
Joseph Laird
Michael & Darlene Lake '80
Gene & Sue Lamb
Nannie Lambdin
Benjamin & Barbara Lambright
Steve & Candy Lance '71
Nina Lane
Tom & Terri Lanier '80
Eric Lanmer
Pam LaPlante '84
Chuck & Sandra Largent
Betty Lawrence
Scott & Penny Lawrence '84
Don & Bonnie Lawson
Alonzo & Anna Layne
Lillian Lazuka '62
William & Pam Leak '68
Fred & Carolyn Lear
Clairice LeBlond
Michelle Ledford
Leroy & Doris Ledsworth '62
Bill & Robbie Lee
Jerry & Carol Lee
Steve & Brenda Leeseer
John & Linda Leffler
Beth Lehnan
Suzanne Leis '94
Janette Leitz
J. Thomas Lengua
Gary & Carolyn Leonard
Charles & Glenda Levench
Betsy Lewis '66
Ernie & Tammy Lewis
Gary & Denise Lewis '71
John Lewis '71
Julie Libby
Joe & Gloria Johnson '62
John & Kathy Johnson
John & Barbara Johnson
Laura Johnson
Mary Johnson
Phil & Susan Johnson
Richard Johnson '62
Ruby O. Johnson
Timothy & Susan Johnson '78
Velma Johnson
Wayne Johnson
Willie & Lora Johnson
Dale & Maryann Johnston
Gene Jonas
Marilyn Jones
Bruce & Dawn Jones
Daniel & Renee Jones
Don & Dawn Jones '81
Doris Jones
Edgar Jones
Helen L. Jones
Hilda Jones
Jimmy & Dorothy Jones
Karen Jones
Marilyn Jones
Robert Jones
Robert & Lora Jones
Ron & Rena Jones
Brad & Brenda Lyons
Clara Hicks
Don & Wanda Hicks
Robert Heaatt '77
Connie Higginbotham
Robert Higginbotham
Phillip Higgins
Thomas Higgins
Charles & Elva High
Delores Kamphuis
Jackie Hill
Rebecca Hill
Anthony Hillgoss '73
Jerry & Teresa Gilbreath '76, '75
Gary Hinson
Lewis & Dianna Hinson '67, '68
Jeff & Lori Gallatin
Morris Hinson '64
Bill & Pat Hitchcock
Rawdon & Betty Hobbie
Paul Hobbs
Ruth Hodge
Samuel & Lizzie Hodge
Edward & Linda Hodgens
Bruce Hodgson
Mena Hoeller
Randy & Jan Hoffman '77
John & Shari Hogg '93
Ronald & Patricia Gawkik
Gary Geauvreau
Edward & Betty Gentry
Hae Gentry
James & Patsy Gentry
Ruth Gentry
Murrell & Barb Gerald
Patty Gerth
Thomas & Eleanor Gettings '78
Mary Getzelman
Loren & Iola Gieger
Herman Griffin
Duane & Shirley Gillen
Jean Gillespie
Virginia Gillette
Marlin & Darlene Gilliland '82, '83
Michael & Diane Gilliland
Ramona Gillock
Steven & Linda Gilstrap
Roy & Louise Gist
Jerry & Joan Glasser
Samuel & Beaulah Glazier
Clara Glenn
Wayne & Wilma Glover
Joyce Gobel
Bette Huckaby
Shane & Michele Godmere '91
Jim & Karen Goff '78, '79
Teasda Goldade
Charles Gonder
Richard & Carolyn Goodlet
Richard & Jennie Lynn Goodwin '67, '66
Bob & Terri Hull '82, '81
Bill Humble
John & April Humphrey
Howard & Patricia Hunt

Ben Lai
Carl & Evelyn Laidler
Joseph Laird
Michael & Darlene Lake '80
Gene & Sue Lamb
Nannie Lambdin
Benjamin & Barbara Lambright
Steve & Candy Lance '71
Nina Lane
Tom & Terri Lanier '80
Eric Lanmer
Pam LaPlante '84
Chuck & Sandra Largent
Betty Lawrence
Scott & Penny Lawrence '84
Don & Bonnie Lawson
Alonzo & Anna Layne
Lillian Lazuka '62
William & Pam Leak '68
Fred & Carolyn Lear
Clairice LeBlond
Michelle Ledford
Leroy & Doris Ledsworth '62
Bill & Robbie Lee
Jerry & Carol Lee
Steve & Brenda Leeseer
John & Linda Leffler
Beth Lehnan
Suzanne Leis '94
Janette Leitz
J. Thomas Lengua
Gary & Carolyn Leonard
Charles & Glenda Levench
Betsy Lewis '66
Ernie & Tammy Lewis
Gary & Denise Lewis '71
John Lewis '71
Julie Libby
Michael & Pam Light '81
Fred & Anne Limatita '66
Steve & Joyce Liles '73
Bedford Lindsay
James & Pat Lindsay '70
Mike & Ruth Lomeli '78
Kay Loren
Alex & Gale Litrinch
Donna Monacelli
Ed & Geraldine Monroe
Seza Monroe
Gerald & Judy Montgomery '62
John & Jerry Montgomery
Louise Montgomery
Montgomery Ward Foundation
Erica Moody '87
Bill & Pat Moon
Charles & Mayme Moore
Donald & Dorothy Morales
Leon & Janet Morales '73
Ivy Morgan
John & Modena Morgan
Lucille Morgan
Howard Morrison
Carcus Morrison
Mark & Kim Merra
John & Norma Morris
Marshall & Kristine Morris
Regina Morris '93
Bill & Diane Morrison
Ben & Peggy Morton
Howard & Alice Morton
Lyda Morton
Tim & Vickie Morton '85, '86
Inez Mosley
James & Rhonda Mosley '71, '72
Larry & Joanne Mosley
Pearlie Motley
Dan & Pam Moylan
Doug & Rosie Mandemach
Pensy Mangion
Lanora Mangus
Ethel Mann
Thomas & Ann Mantych
Tyronne & Elizabeth Maranian
Peggy Maritz
Maritz Incorporated
Duane Markell
Glen & Lisa Markell '82
Kenneth & Char Mariette
Guy & Susan Marshall
Bill & Kathy Martin
Craig Martin '73
Eleanor Martin
Ken & Debbie Martin
Naim & Ferial Kheir
Kim Martin '86
Leo & Sharon Martin
Jeff & Marlyce Martin '82
Ralph & Festus Martin
Robert & Kim Martin
Joe & Lori Mason '85
Carl Matheny
Randy & Pam Matheny '76
Jewell Mathis
Gloria Mathison
Lee & Vesla Matthews
Mac Matthews
Ted & Melarnie Matthews
Bill & Barb Maurer
Dick & Lena Mawby
Maxus Energy Corporation
David & Elaine May '74
Kevin & Sally May
Keith & Anita Mayes '83
James & Delma Mayes
Joy Mayes
Tim Mays '89
Kent & Cheryl McAllister
Pat Kowalewski '80
Susan Kowalski '84
Edward & Ann Kozar
Gregory & Michele Kozar
Larry Kranz
Barbara Krebs '67
Keith & Stelia Kreh '62
Alex & Jim Hukalo
Cliff & Terry Hulbert
Bob & Terri Hull '82, '81
Bill Humble
Magdalen Kuykendall
Brad & Linda Lackie

Cecilia McCollough
Bobby & Fayne McCoy
Larry & Cindy McCoy
Pete & Jan McCoy '62
Charles & Linda McDermitt
Lloyd McDonald
Richard McDonald
Scott & Sandy McDonald
Donald & Sandra McElhaney
Jennifer McFarland
Dunward & Sue McGaha
Fay McGinnis
Don & Yvonne McGuire
Jim Bill & Betty McInteer
Wima McKeel
William & Janice McMurray
Jerry & Toni McWilliams
Geneva Meadows
Martha Meadows
Al & Linda Meakles
Charles & Anna Mechando
Dan & Justina Meixner '80
Grace Mel
R. W. & Beverly Mercer
Lynan & Dana Mereness
Kevin & Anna Messier
Lorraine Messina
Robert & Betty Meyer
Steve & Cindy Michiels
Luddie Mickens
Matthew & Kathy Mihm
Harry & Brooks Milam
Larry & Kathy Milam
Chel & Charlotte Miller
Dennis & Judy Miller '67
Gale Miller
Larry & Karen Miller '79
Ray Miller
Callie Fay Milkien
Malcolm & Nancy Milne
Dennis & Cheryl Mince
Cynthia Minor
Harold & Patricia Mitchell
Cynthia Models
Byron & Patti Moizzo
John & Patricia Molloy
Donna Monacelli
Ed & Geraldine Monroe
Seza Monroe
Gerald & Judy Montgomery '62
John & Jerry Montgomery
Louise Montgomery
Montgomery Ward Foundation
Erica Moody '87
Bill & Pat Moon
Charles & Mayme Moore
Donald & Dorothy Morales
Leon & Janet Morales '73
Ivy Morgan
John & Modena Morgan
Lucille Morgan
Howard Morrison
Carcus Morrison
Mark & Kim Merra
John & Norma Morris
Marshall & Kristine Morris
Regina Morris '93
Bill & Diane Morrison
Ben & Peggy Morton
Howard & Alice Morton
Lyda Morton
Tim & Vickie Morton '85, '86
Inez Mosley
James & Rhonda Mosley '71, '72
Larry & Joanne Mosley
Pearlie Motley
Dan & Pam Moylan
Doug & Rosie Mandemach
Pensy Mangion
Lanora Mangus
Ethel Mann
Thomas & Ann Mantych
Tyronne & Elizabeth Maranian
Peggy Maritz
Maritz Incorporated
Duane Markell
Glen & Lisa Markell '82
Kenneth & Char Mariette
Guy & Susan Marshall
Bill & Kathy Martin
Craig Martin '73
Eleanor Martin
Ken & Debbie Martin
Naim & Ferial Kheir
Kim Martin '86
Leo & Sharon Martin
Jeff & Marlyce Martin '82
Ralph & Festus Martin
Robert & Kim Martin
Joe & Lori Mason '85
Carl Matheny
Randy & Pam Matheny '76
Jewell Mathis
Gloria Mathison
Lee & Vesla Matthews
Mac Matthews
Ted & Melarnie Matthews
Bill & Barb Maurer
Dick & Lena Mawby
Maxus Energy Corporation
David & Elaine May '74
Kevin & Sally May
Keith & Anita Mayes '83
James & Delma Mayes
Joy Mayes
Tim Mays '89
Kent & Cheryl McAllister
Pat Kowalewski '80
Susan Kowalski '84
Edward & Ann Kozar
Gregory & Michele Kozar
Larry Kranz
Barbara Krebs '67
Keith & Stelia Kreh '62
Alex & Jim Hukalo
Cliff & Terry Hulbert
Bob & Terri Hull '82, '81
Bill Humble
Magdalen Kuykendall
Brad & Linda Lackie

Roger & Phyllis Pace '66
Winfred & Octavia Pace
Gary & Laura Palmer '79, '86
Gene & Betty Palmer
Stan & Marcia Palmer
Russell Pankau
Greg & Sue Parker '80
Dawanna Parker
Freda Parker
Don & Pat Parrott
Greg & Jan Parrott '84
Donald & Joys Pastorri
Brian & Mary Paterson
Jill Paterson '84
Randy Patrick
Joe & Lisa Patricio '88, '91
Aubrey Patterson '63
Johnnie Patterson
Cleta Patterson-Smith
William & Olda Paul
Phelos & Associates, P.C.
Ruth Piller
Mark & Linda Pittman '70
Tim & Laura Pittman '85, '82
Marge Plette
Harold Pletcher
Roger & Joyce Poe '94
Robert & Marge Pollard
Dan & Gail Porter
Eric & Linda Porter
Hazel Powell
Juanita Powell
Lionel Powell
Robert & Wilma Powell
Frank & Linda Pretzel
Frankie Pretzel
Keith & Lora Price '71
Price Waterhouse Foundation
Dean & Carolyn Priest
Bertha Prichard
Edna Prichett
Alfred & Miriam Prohl
Neale & Treva Pryor
Ray & Patsy Pugh
Burnice Pulido
Dave & Rita Pulley '84
Karen K. Pulins '65
Deborah Purgatori
William & Helen Putty
Mary Qualls
Lavonda Ramey
Janell Smith Ramos
Bill & Christy Rampton
Betty Ramsey
Charles & Carrie Ramsey
Darlene Randazzo
Richard & Jill Raper '77
Ray & Charie Rasinick
Bob & Ernestine Rathbun
Loraine Rathburn
James & Bobby Ray
Larry & Susan Ray
Edna & Grace Raymer
Reginald & Susan Read
Janice Recor
Steve & Peggy Reed
Toby & Anita Reeves '87
David & Gail Reeves
Everett & Marge Reeves
Larry & Marlene Reeves
Richard & Terry Reeves
Thomas & Irene Reeves
Darwin & Jesse Rehkop
Rex & Linda Reid
Scott & Linda Remsing
Albert & Kathy Renner
Ivan & Sharlene Renshaw
Tom & Lisa Reynolds '93
Amos Rice
Donald & Helen Richards
K. C. & Gladys Richards
Debbie Richmond '83
Buna Rickner
Phyllis Rickner
Regina Morris '93
Bill & Diane Morrison
Ben & Peggy Morton
Howard & Alice Morton
Lyda Morton
Tim & Vickie Morton '85, '86
Inez Mosley
James & Rhonda Mosley '71, '72
Larry & Joanne Mosley
Pearlie Motley
Dan & Pam Moylan
Doug & Rosie Mandemach
Pensy Mangion
Lanora Mangus
Ethel Mann
Thomas & Ann Mantych
Tyronne & Elizabeth Maranian
Peggy Maritz
Maritz Incorporated
Duane Markell
Glen & Lisa Markell '82
Kenneth & Char Mariette
Guy & Susan Marshall
Bill & Kathy Martin
Craig Martin '73
Eleanor Martin
Ken & Debbie Martin
Naim & Ferial Kheir
Kim Martin '86
Leo & Sharon Martin
Jeff & Marlyce Martin '82
Ralph & Festus Martin
Robert & Kim Martin
Joe & Lori Mason '85
Carl Matheny
Randy & Pam Matheny '76
Jewell Mathis
Gloria Mathison
Lee & Vesla Matthews
Mac Matthews
Ted & Melarnie Matthews
Bill & Barb Maurer
Dick & Lena Mawby
Maxus Energy Corporation
David & Elaine May '74
Kevin & Sally May
Keith & Anita Mayes '83
James & Delma Mayes
Joy Mayes
Tim Mays '89
Kent & Cheryl McAllister
Pat Kowalewski '80
Susan Kowalski '84
Edward & Ann Kozar
Gregory & Michele Kozar
Larry Kranz
Barbara Krebs '67
Keith & Stelia Kreh '62
Alex & Jim Hukalo
Cliff & Terry Hulbert
Bob & Terri Hull '82, '81
Bill Humble
Magdalen Kuykendall
Brad & Linda Lackie

Brian & Robin Schad '85
Arlyn & Wilma Schaefer
Robert & Pauline Schaefer
Paul & Bev Schandever '85, '81
Tim & Cathy Schaeper '84
Jeannette Schiemel
Lester Schimmel
Frederic Schimon
Wincoff & Mildred Schlander
Russell & Jo Schloer '86
Marvin & Ruth Schmerser
Dave & Cindy Schriedel '91, '78
Max & Mary Schofield
George & Brenda Schrader
Dolores Schultz
Irene Schultz
Jean Schwilke
Frank & Rose Sciatto
Henry & Tamela Scott
Bernadene Seat
Ernie & Laticia Seay '87
Everette Seazy
Donald & Janet Sebo
Susie Seecombe
Ken Seiders '72
Tim & Pat Seifer
Ken & Jeanne Seitz
Ruth Ann Sellers
Beatrice Selmon
Carl Senne
Henry & Deulah Sessums
Mark & Gloria Sessums '75, '74
Penie Sexton '91
Robert & Carolyn Seyfried
Laura Shannon
Cordie Sharp
Donna Shelton
Dianna Shelton
Lita Pippin
John & Lori Shelton
John & Patti Shepard
Raymond Simon
Annie Sherman
Bernice Sherman
Robert & Sheila Sherman
Alan & Melaine Shoaf
Brenda Shorland '68
Gail Shortidge '78
Donald & Landra Shotts
Roger & Rosalee Shivers
Rick & Mary Shur
Ronald Siegel '88
Silver String Dulcimer Society
Sidney & Mariette Simon
Mel Sims
Paul & Connie Sims
Mary Sinclair
Hershel & Sharon Sizemore
Robert & Gracie Skaggs '69, '67
Ken & Gail Skidmore '82
Kevin & Jan Skidmore
Allyn & Miriam Smith
Jim & Karla Smeal '85
Tim & Darlyn Smeal
Vivian L. Smart
John & Connie Smior
Barbara Smith
Carroll & Lorene Smith
Donald & Alyce Smith
Ernest & Frances Smith
Grady & Jeanne Smith
Janell Smith '78
Bill & Melanie Smith
Keith & Marion Smith '63
Leslie & Sandra Smith
Linda Smith '74
Margaret Smith
Marilyn A. Smith
Mark & Beth Smith '89
Martha Smith
Trevor & Nancy Smith '76
Pat & Grace Smith
Renae Smith
Richard & Aileen Smith
Ron & Myrna Smith
Shirley Smith
Stephen & Lisa Smith
Susan Smith
Marvin & Tina Smith '86
Sharon Smotherman '85
Dan & Carol Smotherman
Keith & Carol Waters
Mel & Brenda Sommers
Steve & Ann Soper
Daniel & Karen Sorensen
Kathryn Sorice
Sam & Patricia Soules
Bob & Kathy Sowles '68
Tim & Marlene Spahn '73
Earl & Ruth Sparkman
Geneva Sparks '81
Nancy Sparks
Curt & Lorraine Sparks '77
Richard & Gloria Spears
Vern & Violet Riggerbach
Larry & Dianne Speirs '87
Richard & Margaret Spencer
Frances Spire
Jerry & June Springfield
Allen & Sandra Sprowl
Larry & Susan Stack
Mary Stack
Minnie Staggs
Milton & Lucille Stajich
Gladys Stanfill
Brad Stanger
Rick & Linda Stanley '76
David Starkey
David & Sheila Starnes
James Steele
Harry & Esther Stefanick
Jeff & Kathy Stegler '84
L.F. Stelzel
Minnie Stelzel
C. B. & Kathleen Stephens
Mark & Janice Stephens
Thomas Stevens
Al & Helen Stewart
Claude & Jane Wiley
Edna Stewart
Gary & Mary Stewart
Kanneth Stewart
Ray & Elsie Stewart
Ron & Ann Stewart
Glenn & Tina Stinson
Eustis & Eunice Stone
Larry & Thillie Stone
Kevin Stonebraker
Sarah Stoval
Mark & Leslie Stowe '74
Frank & Shirley Strawn
Bernie & Susan Stricklin
David & Judy Stroud '75
Harmon & Louise Stroup
Jack & Marjorie Stubbs
Wallace Stump
Cindy Sturdivant '91
Jim & Betty Suddath
Annabelle Suggs
Jerry & Sherry Suggs '64
Rhonda Sullinger '81
Charles & Reitha Summers
Ben & Mary Suthers
Randy & Linda Wright '80
Joe & Carol Wright
Rob & Kathy Wright '87
Tina Wroblecki
Bob & Kelly Yoakam '76
Charles & Pat Young
Eddie & Lori Young '79
Conrad & Kathy Zboch
Sam & Nancy Zekelose
Keith & Mary Lynn Ziegler '84, '83
Kevin & Barb Ziegler '79

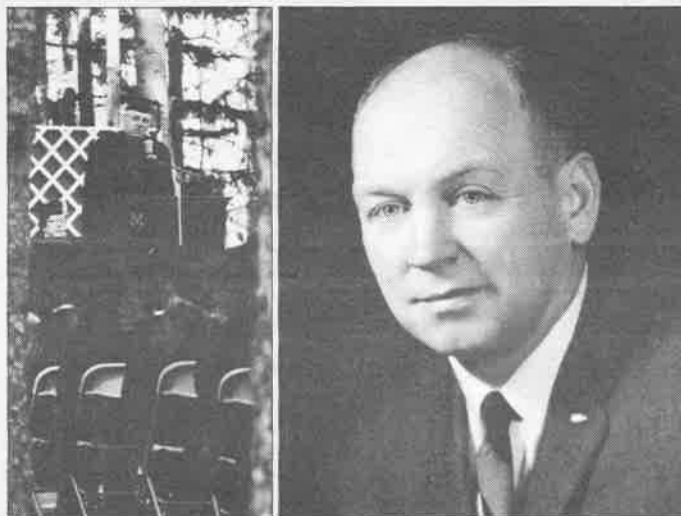
Duane & Betty Tennant
Arlyn & Wilma Tetlow
Winfred & Lou Terry
Edward & Julie Thoman
Dorothy Thomas
George Thomas
Kevin & Janet Thomas '78
Mike & Simone Thomas '95
Phil & Mary Thomas
Tom & Carol Thompson '68
Don & Billie Thompson
Don & Lois Thompson
Elymra Thompson
Jeffery & Shery Thompson
Michael & Lisa Thompson
Walter & Jeanette Thompson
Wayne & Mary Thompson
Clarence Thurmond
James Thrasmer '69
Charles & Nancy Thurston
Gianna Tiller
Chris Timberlake
Dan C. Todd
Opal Torrey
Doreen Toner '84
John & Marilyn Torrey
Mary Townsend
Timothy & Barbara Trammel
Beatrice Trammel
Vija Traube
Trece Family
Wendy Trevorrow
Joseph M. Trimmew
Alton & Carol Tripp
Carl Trisdale
Thomas & Caron Truxx '85, '84
Earl & Lydia Truxx
TRW Foundation
Margaret Tucker
Ron & Nancy Tucker
Helen Turner
Ruth & Pam Turner
Thomas & Diane Turner
Velma Turner
Jerry Tyler
Crystal Tyll '85
Glen & Beth Ulrich '82
Kathy Upchurch
USG Foundation Inc.
Steve Utter
Bonnie Uzzell
Laura Vale '87
Estelle Van Wimersersch
John & Janis VanHorn '71
William & Velma VanHorn
Don & Donna VanHouten
Gordon & Shirley VanSteenberg
Scott & Bernie VanWormer '85
Vonda Varady
Bill & Billie Verker
Jack Vermillion
Ruth & Marion Vernon
Aldine Vicary
Jim & Mary Villinger
Kathy Volke
Bob & Susan Waggoner
Bryan & Debbi Walden '73
Jim & Beverly Wallace
Merill & Aileen Waldrop
Dallas & Aleta Walker '77
Cari & Martha Walker
Lee & Judy Walker
Eddie Wallace '67
Jeff & Ann Wallace
Michael & Sandi Wallace '87, '89
Nancy Wallace '75
Walled Lake M.S. Teaching Staff
Ernest & Opal Walters
Brian & Sue Walters
Dawn Walters
John & Sue Walters
Mary Walters
Sharon Smotherman '85
George Ward
James Ward
Suzanne Ward
John & Mary Warfel
Douglas & Kim Warren
Clint & Phyllis Washburn '63
Eddie & Arinda Washington
Ken & Ellen Washington
J. R. & Carol Waters
Franklin & Debra Watkins
Jim Watson '85
John & Betty Watson
Terry Watson '82
Miles & Deborah Watters '74
Gene & Maxine Watts
William & Barbara Weatherhead
Nolan & Lucille Webster
David & Lorraine Weckerly '66, '67
Dorothy Weimer
Russell & Dee Weipert '84
Nelson & Lorraine Welch
Pete & Faye Welch
Carroll & Patsy Wells
Henry & Eva Wells
Winfred Wells, Sr.
Keith & Andrea Wallested '77, '78
Steve & Jane Wensko '84
West Elk Church of Christ
Larry & Sandy Westberry '89, '88
Billy & Linda Wharton
Jane Wheel
Barry & Lynette Wheeler '83
Dennis & Vickie Wheeler
Amon & Marilyn White
Clarence & Mattie White
Joseph White '62
Carl & Gail White/aw
Richard & Mary Whiting
Ronald & Sharon Whitmore
Pauline Whitehill
Arthur Whyte
George Wicker
Chuck Wickens
Steve Widerson
Dave & Vicki Wiley
Doug & Melissa Wiley '87
Floyd & Jane Wiley
Myra Wilkins
Alber Williams
Arthur & Laura Williams '66
Bonnie Williams
Buster & Vera Williams
Cecil Williams
Doug & Barbara Williams
Irene Williams
Martha Williams
Ray & Mearlyn Williams
Bruce & Carol Willis '70
Frank & Shirley Wilson
Robert & Susan Wilson
Ron & Ruth Winfree '69
Jim & Sandy Wise
Mike & Charlotte Wise
Ethel Withrow
Miles & Gail Wolf
Leo & Sara Wolfe
Ed & Jane Woloszyk '67
Don & Karen Wood
Mary & Mary Wooden '82
Bill & Loretta Wright '87
Bill & Linda Wright '70
Joe & Carol Wright
Rob & Kathy Wright '87
Tina Wroblecki
Bob & Kelly Yoakam '76
Charles & Pat Young
Eddie & Lori Young '79
Conrad & Kathy Zboch
Sam & Nancy Zekelose
Keith & Mary Lynn Ziegler '84, '83
Kevin & Barb Ziegler '79

Matching Gifts

Matching gifts continue to be the easiest way to make the most of your financial gifts to Michigan Christian College. Over 1,000 businesses and organizations will match employee gifts to MCC. Ford Motor Company recently reported that out of 800 colleges and universities that received matching gifts from them in 1994, MCC ranked eleventh nationally with over \$33,000 awarded.

To find out if your employer will match gifts to Michigan Christian College, call the MCC Development Office at 1-800-521-6010 or visit our Personnel Office at work.

Remembering When ...



Providing leadership to Michigan Christian College for over forty years, Jim Thomas of Oregon, Ohio, recently retired from the Board of Trustees. Jim served on the board from its inception in 1954, and until recently was the only founding board member still serving in that capacity. The board honored Jim at a surprise luncheon, in which they designated him, and Faye Dilgard of Fort Wayne, Indiana, another retiring board member, as the college's first *Trustees Emeriti*.



Members of the Development Council pose for a group photograph after a spring meeting on the campus.

Impact of council begins to surface

Developing as an integral part of the volunteer network of Michigan Christian College, the newly-formed Development Council discovered further avenues of service to the college after their spring meeting on the campus. The group formed last fall in order to assist college efforts in such areas as public relations, development, and student recruitment.

"It was exciting to sit in on the Development Council's last meeting and listen to the great ideas that they are generating," noted Bob Utley, chairman of the Board of Trustees. "There are a lot of capable people in this region of the country who are willing to give of their time and talents to

help Michigan Christian College move forward. The Board of Trustee's appreciates the great work of this group."

In the first working session of their spring meeting, the Development Council discussed ways to strengthen the college's internship and placement programs. As a result of those discussions, Phil and Joyce Stewart, members of the council, have played a key role in expansion of the Career Center. Joyce plans to use her skills from the corporate world on a part-time basis as a volunteer staff member in the center this fall.

Bob Norton, Jr., vice-chairman of the council, then divided the participants into three groups to discuss admissions and recruitment, development, and alumni relations. Along with other discussions, the groups provided valuable input about the location and speakers for Partnership Dinner, and proposed an alumni business card exchange, which two members volunteered

to develop into an on-line directory of professional services available from former students of the college.

Before wrapping up a productive meeting, Gregg Carrier, chairman of the council, led an open forum for the entire group. Members confirmed the impact of sending student groups into congregations, further underscoring plans by the Admissions Office to add another traveling group this fall.

Currently, membership of the Development Council includes forty-five family units from Michigan, Ohio, Indiana, and Illinois. Alumni of the college make up a large percentage of the membership. The group meets two times each year, during the Fall Festival and in the spring.

"We look forward to great things happening as a result of the Development Council," stated Phil Conner, campus coordinator of the group. "The future of the college will be brighter because of their efforts!"

Fall Events on the Campus of Michigan Christian College

September 9, 1995

Associates Fall Festival

crafts and gifts ~ food ~ fellowship
children's area ~ entertainment



September 30, 1995

JUNIOR SENIOR DAY

admission information
financial aid information
academic advising ~ campus tours

October 1-3, 1995

Annual Bible Lectureship

"New Testament Christians
in a Post-Modern World"



Spectrum performs a parting song for a prospective music instructor.

The *North Star* is the official news bulletin of Michigan Christian College. Comments should be addressed to Larry Stewart, director of public relations.

Michigan Christian College does not discriminate on the basis of race, color, gender, age, disability, or national or ethnic origin in the execution of its educational program, activities, employment, or admissions policies except where necessitated by specific religious tenets held by the institution and its controlling body.

Michigan Christian College
800 West Avon Road
Rochester Hills, MI 48307

Address Correction Requested

Non-Profit Org.
U.S. Postage
PAID
Rochester, Mich.
Permit No. 86